

2023/2024 New Jersey Employees Charitable Campaign



**MY COMMUNITY.
MY CAUSE. MY CHOICE.
MY NJECC!**



GET STARTED

WWW.CHARITIES.ORG/NJECC

Fast Facts – What is the NJECC?

- ✓ NJECC is the workplace giving program for public employees of NJ
- ✓ Established by the NJ State Legislature in 1985 to create a cost-effective way for employees to support their favorite charity.
- ✓ Comprised of charitable organizations that apply to participate in the NJECC
- ✓ The statute provides NJ public employees the opportunity to contribute to a multitude of charities through the convenience of payroll deduction.
- ✓ Over \$52 million raised for charities serving NJ residents since 1985



**MY COMMUNITY.
MY CAUSE. MY CHOICE.
MY NJECC!**

**SEP - DEC
2023**

DONATE NOW

WWW.CHARITIES.ORG/NJECC

Coordinator Objectives, Benefits, & Responsibilities



**MY COMMUNITY.
MY CAUSE. MY CHOICE.
MY NJECC!**

**SEP - DEC
2023**

DONATE NOW

WWW.CHARITIES.ORG/NJECC

Introduction

As a Coordinator, you serve a vital role in the success of the program through the annual giving drive and are crucial to the success.

You are the bridge between participating charities and the more than 100,000+ public employees.



**MY COMMUNITY.
MY CAUSE. MY CHOICE.** **SEP - DEC**
MY NJCEC! **2023**

DONATE NOW

WWW.CHARITIES.ORG/NJCEC

Objectives

You are responsible for raising awareness of the program in the workplace by:

- ✓ Planning fundraising efforts
- ✓ Creating/sharing promotional communications
- ✓ Hosting nonprofit speakers, and coordinating special events

Benefits for Charities

- **Dependable Income:** Charities highly value workplace giving dollars because they are yearlong, predictable, and unrestricted.
- **Visibility:** Participating charities benefit from inclusion on the NJECC website. During the campaign, charities may have the opportunity to speak and introduce their work to employees.
- **Efficiency:** Each disbursement contains donations from multiple donors.
- **Cost Effective:** Allows the charities to spend more resources on direct programs.

Benefits For Employees

- **Simplicity:** Fill out the online pledge form and click Submit – done! The NJECC will take care of the rest.
- **Choice:** There are over 650+ charities in the program and three ways to give. What are you passionate about?
- **Privacy:** By opting to remain anonymous on the pledge form, employees can truly remain anonymous in their giving and still have all the tax documentation.
- **Efficiency:** Choose from prescreened nonprofits listed in one place.
- **Emotional Boost:** Feel happier! A compelling, and growing, body of research shows that giving as little as \$5 can increase happiness and reduce stress.

Campaign Coordinator

- Coordinators and their teams are critical to the success of the NJECC.
- You are the key to ensuring every employee has a quality opportunity to engage with the program.
- You are the promoter of the program

You will:

- ✓ Meet new people
- ✓ Explore fundraising best practices
- ✓ Engage with local charities
- ✓ Make a difference

Coordinator Responsibilities

- ✓ Great development opportunity
- ✓ Recruit, mentor, and manage your department's team
- ✓ Obtain management support
- ✓ Develop a campaign timeline and set goals
- ✓ Plan awareness meetings, activities and events
- ✓ Ask colleagues to consider giving to their favorite charity through the NJECC
- ✓ Recognize and thank volunteers, coworkers and managers at campaign end

Benefits of Being Coordinator

- ✓ You will build skills and relationships that will help you in all aspects of your job.
- ✓ Learn and utilize organization, communication, and team-leading skills
- ✓ Get to know coworkers and management at all levels of the organization.
- ✓ Have fun with your work group
- ✓ Feel good about doing something great for the community
- ✓ Gain experience in strategic planning, goal setting, and implementation

How To Get Started

- ✓ Attend training/best practices
- ✓ Learn about and become familiar with the NJECC.
- ✓ Make your own pledge before talking to others
- ✓ Ensure that every employee in your organization is aware of the NJECC and asked to participate
- ✓ Share from personal experience.
- ✓ Act as a single point of contact for your work group.
- ✓ Encourage payroll deduction

- ✓ Work with leadership to send out messaging during the NJECC drive.
- ✓ Organize special events and fundraisers
- ✓ Bring in a charity and/or a charity speaker and encourage co-workers to attend presentations
- ✓ Be creative! Provide inspiring leadership during the annual workplace giving campaign.
- ✓ Thank co-workers for their enthusiasm and engagement!

Throughout the Campaign

✓ Lead by example

- ✓ Be the first to make your pledge

✓ Promote and Educate

- Endorsement letters/emails from top management
- E-Cards
- Employee newsletters & emails
- Customizable PDF campaign flyers
- Kick-off

✓ Create Awareness

- Online Giving Days
- Promotion Toolkit
- Competition
- Campaign posters & flyers
- In-person or Virtual Lunch & Learns
- Invite Charity Representatives to Speak on Your Weekly Zoom Call or In-person Charity Fair

✓ Motivate Employees

- ✓ Use cause-focused messages to connect their donations with meaningful impact
- ✓ Include success stories in your emails

✓ Track Results

- ✓ Customizable PDF Goal Chart
- ✓ Share campaign results using #NewJerseyGives

REPORT YOUR RESULTS

- Make a final request via email for all employees to visit the online pledge site to make a contribution.
- Ensure the pledge forms and report form(s) are filled out completely, signed and that the math is accurate.
- Report the final campaign total to the entire organization.

SAY “THANK YOU”!

*The most important
“Best Practice” of all...*

- ✓ Send a personal thank you to your campaign team and organization.
- ✓ Have your agency or department head send an organization-wide thank you.
- ✓ Generosity should be rewarded with sincere gratitude



**MY COMMUNITY.
MY CAUSE. MY CHOICE.
MY NJECC!**

**SEP - DEC
2023**

DONATE NOW

WWW.CHARITIES.ORG/NJECC

Campaign Volunteer Tool Kit



**MY COMMUNITY.
MY CAUSE. MY CHOICE.
MY NJCEC!**

**SEP - DEC
2023**

DONATE NOW

WWW.CHARITIES.ORG/NJCEC

Campaign Resources – Volunteer Toolkit

NJECC.net

New Jersey Employees Charitable Campaign

Find us on: [facebook](#) FOLLOW US ON: [twitter](#) Follow us on: [Instagram](#)

About Us NJECC Charities Making The Difference Workplace Donors Retirees **Campaign Resources** County PECC Info

MY COMMUNITY. MY CAUSE. MY CHOICE. MY NJECC!

September - December 2023

THE HEART OF NEW JERSEY GROWS STRONGER WITH CHARITY

>> 2023 Charity Code Book

>> Campaign Promotion Toolkit

Between March 6, 2023 and March 31, 2023, we are offering a special discount on the **Charity Promotion Toolkit** for the **2023 Campaign**. Filled with ready-to-use messages, the Promotion Toolkit is designed to make it as easy as possible for you to help promote the NJECC to fellow colleagues. [Download the Promotion Toolkit deck and the corresponding graphics and flyers](#) for:

Click here for details

THANK YOU TO OUR PROMOTIONAL SPONSOR, THE CREDIT UNION OF NEW JERSEY.

Credit Union of New Jersey The freedom to prosper.

Volunteer Toolkit
2023 Campaign Overview, Informational Flyers, and Planning Materials

- [Coordinator Training and Best Practices Presentation](#)
- [Coordinator Checklist](#)
- [Top Reasons to Give](#)
- [What Your Gift Can Buy \(Dollar-buy impact examples\)](#)
- [Q & A](#)
- [Campaign Information Overview](#)
- [Online Giving Platform](#)
- [2023 Charity Login Instructions](#)
- [2023 Charity Brochure/Code Book](#)
- [2022 Paper Pledge Form \(3-page print and mail version\)](#)
- [2022 Paper Pledge Form \(fillable format\)](#)
- [Report Form \(this is in an electronic fillable format\)](#)
- [Charity Fair Request Form \(this is in an electronic fillable format\)](#)
- [Thank You Bag Tags](#)
- [QR Code Donor Instructions](#)
- [Fundraising Ideas](#)

Download the Promotion Toolkit deck and the corresponding graphics and flyers for:

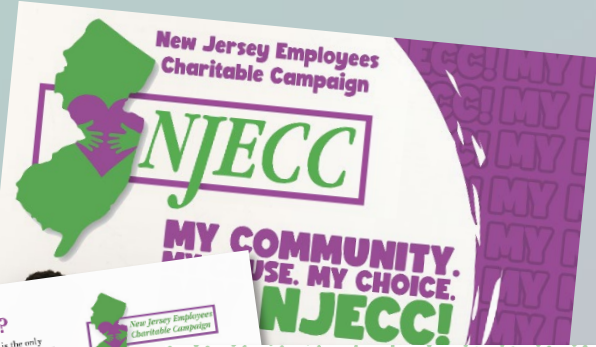
Charity Code Book, Donor Education Materials, Promotional Toolkit, Forms, & Coordinator Resources



Coordinator Checklist

Important First Steps

- Everyone wins when you give! Think about the issue(s) and organization(s) that are close to your heart.
- Attend a training workshop to learn best practices for engaging your colleagues.
- Review last year's campaign with executive management to discuss what worked and what you would like to do differently.
- Don't do it alone! Recruit a POWERFUL team. Recruit coworkers who care about the community and are excited about the campaign.
- Develop a fun and exciting plan that includes a kickoff and timeline, virtual charity fair, and other activities and events.
- Work with your department executive to engage senior leadership and management in promoting the campaign and encouraging participation. Share your campaign plan and get their endorsement.
- Promote the campaign to educate, inform, and build enthusiasm. *We have resources for you!* You can use a variety of pre-made resources, including logos, e-cards, employee messages and great at www.njecc.net (select "Campaign Resources" from the navigation menu) and click "Download".



What is the NJECC?

The New Jersey Employees Charitable Campaign is the only statewide authorized fundraising solicitation of employees in the public workplace on behalf of charitable organizations.

Thanks to legislation that created the New Jersey Employees Charitable Campaign in 1985, employees of state agencies, universities, county government, municipalities and school districts throughout New Jersey can donate to their favorite charities through an annual workplace giving or benefit of giving to many of their favorite charities through the convenience of payroll deduction.

Since its inception more than 35 years ago, the campaign has raised nearly \$30 million for charitable organizations - local, national, and international.

For more information about the NJECC, visit www.njecc.net.



2023/2024 New Jersey Employees Charitable Campaign Campaign Coordinator Report Form PAPER PLEDGES ONLY

DATE: _____

DEPARTMENT/AGENCY NAME: _____

COORDINATOR NAME: _____

EMAIL ADDRESS: _____

PHONE #: _____

Please complete ALL fields in this section, make a copy for your records and [submit forms and checks to:](http://www.njecc.net)

Campaign Manager
NJECC
PO Box 506
Atlantic City, NJ 08501

Payroll Deduction Pledges	# Employees	TOTAL AMOUNT
Checks	\$	\$
TOTAL (this report)	\$	\$

All checks must be made payable to: **NJECC**

Campaign Coordinator Signature: _____ Date: _____

CHARITABLE CAMPAIGN 2023-23 PLEDGE FORM

When completing this form, thank you!

REQUIRED for Charitable Pledges
Employee Only
Charitable Pledge Form

SENDING YOUR GIFT

Check the box that applies to your gift:

- I am donating to a charity listed in the NJECC directory.
- I am donating to a charity not listed in the NJECC directory. I have provided the charity's name and address on the back of this form.
- I am donating to a charity listed in the NJECC directory, but I have provided the charity's name and address on the back of this form.

MY TOTAL PLEDGE \$

Signature: _____ Date: _____

words, email, department website, etc. used to participate

support and why you support them (power to make a difference in a way that I value)

out the campaign, shine the spotlight of any, the importance of supporting specific causes as

to make presentations at staff meetings, etc. Share your campaign results, events, videos

to submit to the NJECC Campaign Manager with the C



Donations exceeded \$687, for charitable organizations!

How does it work?

Each fall, we get the opportunity to learn about 7 NJECC and choose which ones we want to help. We fill out a paper pledge form to indicate how much we want to donate to which groups. You can make a one-time donation or have your gift card be deducted from your payroll beginning with the first pay period of payback.

The campaign runs from September through February.

The directory provides information on all the charities and causes represented - there's a wide variety of vital health and human services.

Charities that wish to participate in the campaign must meet strict eligibility criteria.

- It's an easy, effective and cost-efficient way to give to charities.
- Our contributions help improve the quality of life for people in communities locally, across the country and around the world.
- The campaign supports a wide variety of vital health and human services.
- All charities in the campaign must meet strict eligibility criteria.
- They are recognized by the IRS as 501(c)(3) organizations and registered with Consumer Affairs, Charities Reg
- They provide direct or indirect

Not sure which charity to choose?

Here are 3 steps to help you find the power of your giving:

- STEP 1:** Your donation to a cause is personal. Start by asking yourself, "What's important to me?" Think about people in your life, your hobbies and interests, and things you would like to change or are concerned about.
- STEP 2:** Review the charity listing in the NJECC Brochure or visit www.njecc.net to find charities that match your interests.
- STEP 3:** Select your charity and fill out a paper pledge form or pledge online. Regular payroll deduction is a great way to increase the power of your giving without putting too big of a dent in your wallet at one time.

Don't see your favorite charity listed?

Try searching online at www.NJECC.net

If your favorite charity isn't on this year's campaign list, encourage them to apply for 2024.


Charities can learn more about the application process and requirements under "NJECC Charities" on the NJECC website.

Application materials for 2024 will be available in December 2023.

2023 Paper Pledge Form

Your NJECC Pledge Form is 3-Parts:

- 1st page = payroll copy
- 2nd page = NJECC coordinator copy
- 3rd page = donor copy (for tax purposes)



NEW JERSEY EMPLOYEES CHARITABLE CAMPAIGN 2023-24 PLEDGE FORM

Please use a black ink pen when completing this form. Thank you!

Donate via credit card or payroll deduction online! Visit: www.charities.org/NJECC

Check this box for additional pledge form page only.

CONTACT INFORMATION

FIRST NAME: _____ MIDDLE INITIAL: _____

LAST NAME: _____

BUSINESS UNIT (The name of your state dept., agency, university, school district, or county.): _____

EMPLOYEE ID #: _____

REQUIRED for Centralized Payroll Employees Only:
 Your SS# and payroll # entered here will only appear on copy #1 of this form.

NI STATE CENTRALIZED PAYROLL #: _____ SOCIAL SECURITY NUMBER: _____

EMAIL: _____

HOME ADDRESS (Optional) Required for acknowledgements if no email: _____ PHONE NUMBER (For use to verify designation): _____

CITY: _____ STATE: _____ ZIP: _____

Do you authorize your address and gift amount to be released to the designated charities so that you will receive an acknowledgement? Yes No

DESIGNATING YOUR GIFT

Charity codes are listed in the reference guide code book and at www.charities.org/NJECC. All payroll deductions will be recurring (deducted each pay period throughout the year) starting with the first pay period in January 2024. ****STATE CENTRALIZED PAYROLL EMPLOYEES' DEDUCTIONS (24 TOTAL PAY PERIODS) WILL COMMENCE WITH THE THIRD PAY PERIOD.****

All payroll deduction gifts must be a minimum of \$52 to designate per organization. Pledges left undesignated or designated to a charity NOT listed, will be considered UNDESIGNATED funds and distributed among all eligible charities in the NJECC. To designate more than 4 charities, please use a second form and check the box on the top right corner of the additional page.

CHARITY CODE	CHARITY NAME	ANNUAL AMOUNT <small>(Total annual check or payroll deduction amount)</small>	AMOUNT PER PAY PERIOD (PAYROLL DEDUCTION ONLY) <small>(Annual total divided by your pay period frequency)</small>	PAYMENT METHOD
		\$ _____ . _____	\$ _____ . _____	<input type="checkbox"/> Payroll Deduction <input type="checkbox"/> Check
		\$ _____ . _____	\$ _____ . _____	<input type="checkbox"/> Payroll Deduction <input type="checkbox"/> Check
		\$ _____ . _____	\$ _____ . _____	<input type="checkbox"/> Payroll Deduction <input type="checkbox"/> Check
		\$ _____ . _____	\$ _____ . _____	<input type="checkbox"/> Payroll Deduction <input type="checkbox"/> Check

Checks: Please make your one-time payment payable to: "NJECC"

Please return completed pledge form, along with any check donations, to your campaign coordinator: P.O. Box 566, Allentown, NJ 08501

Total Deduction Amount Per Pay Period: \$ _____

Pay Period Frequency (Your # of pay periods): 20 22 24 26

MY TOTAL PLEDGE \$ _____

AUTHORIZATION (Sign and date here to authorize pledge and payment method.)

I hereby authorize any agency of the State of New Jersey by which I may be employed during 2024 to deduct the amount(s) shown above from my pay each period during the calendar year 2024 starting with the first pay period that begins in January and ending with the last pay period that begins in December, and to pay the amounts so deducted to the New Jersey Employees Charitable Campaign. I understand that this authorization may be revoked by me in writing at any time before it expires.

COPY #1 - PAYROLL OFFICE

Sign: _____

Date: _____ / _____ / _____

TAX RECEIPT INSTRUCTIONS: Please keep a copy of this form, along with your final pay stub (for payroll donors) or cancelled check (for check donors) as a tax receipt for your charitable contribution (use your smart phone or other scanning device). Contributions to a qualified 501(c)(3) are tax deductible to the extent of the law. Contributions made to the campaign are confidential.

IRS Disclosure: No goods or services are provided in whole or in partial consideration for any contribution made via this pledge form.



2023/2024 New Jersey
Employees Charitable Campaign
Campaign Coordinator Report Form
PAPER PLEDGES ONLY

DATE: _____

DEPARTMENT/AGENCY NAME: _____

COORDINATOR NAME: _____

EMAIL ADDRESS: _____

PHONE #: _____

.....
Please complete ALL fields in this section, make a copy for your records and send *with
pledge forms and checks* to:

Campaign Manager
NJSECC
PO Box 566
Allentown, NJ 08501

	# Employees	Total Amount Contributed
Payroll Deduction Pledges		\$
Checks		\$
TOTAL (this report)		\$

All checks must be made payable to: **NJSECC**

Campaign Coordinator Signature _____

Date _____

2023 Report Form

Complete and send weekly with all
collected paper pledge forms &
payments.



A Look at What's Included in the Promotional Toolkit



**MY COMMUNITY.
MY CAUSE. MY CHOICE.
MY NJECC!**

**SEP - DEC
2023**

DONATE NOW

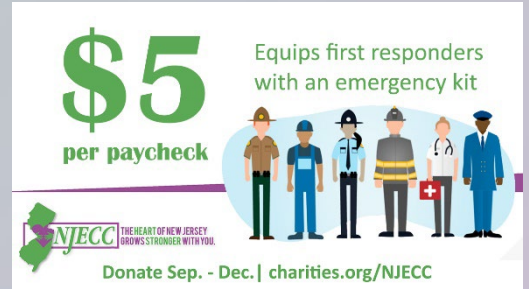
WWW.CHARITIES.ORG/NJECC

Launch and Reminder Materials

Posters and Editable Flyers

Kickoff Video and Email Signatures

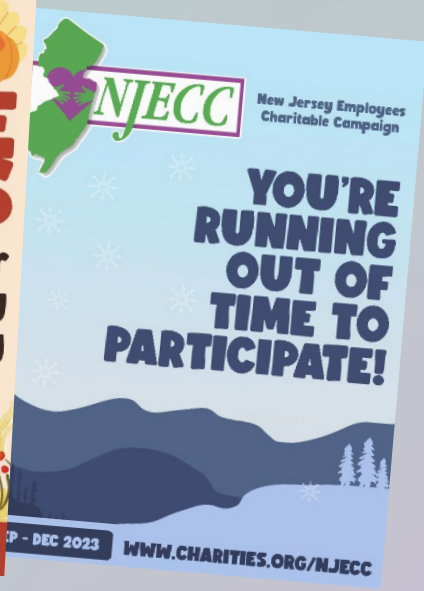
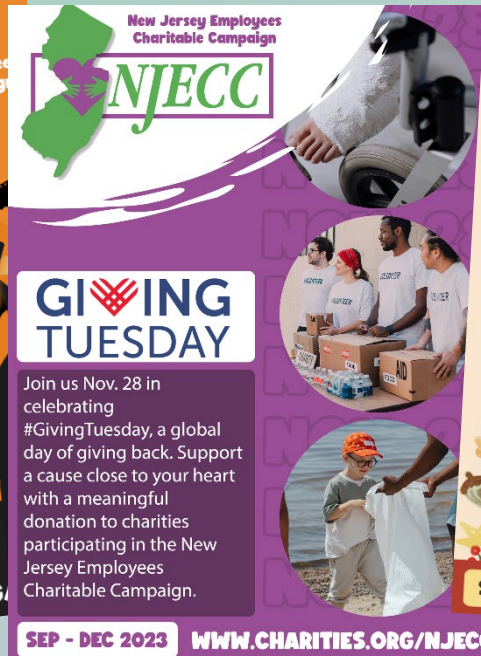
Ecards and Social Media Messages



New Jersey Employees Charitable Campaign

September - December 2023 | NJECC.net

Holiday and Seasonal Themed Messages



New Jersey Employees Charitable Campaign

September - December 2023 | NJECC.net

Cause-focused Materials

To help connect donors to the meaningful impact their donations have on the community, you may share ready-to-use cause impact graphics and ecards. There is no specific cause calendar this year, so feel free to promote the causes in any order you want throughout the campaign. On the pledge website, donors can view cause pages featuring a list of all NJECC charities addressing each cause and they can filter by cause when searching for charities to add to their donation cart when pledging.

Disaster Preparedness, Relief, & Recovery

Connect with more causes you can support through the NJECC

Donate to Your Favorite Charities

Meet the NJECC charities that address this cause: After disaster strikes, we give immediately because we want to respond quickly. But our attention and giving is quickly focused elsewhere. However, the ongoing needs of the affected community are frequently unmet and even increase with time. Many NJECC charities deliver critical support to help communities rebuild after a disaster. Donations made through the NJECC ensure they have the resources necessary to provide immediate and long-term support when a disaster strikes.

If you care about supporting disaster recovery efforts, show that #NewJerseyGives by making your pledge to charities working in this cause area.

The list below includes all NJECC charities who are addressing this cause. When you are ready to make a difference, click the "Donate Now" button to start the donation process and pledge your support to as many charities as you would like. During the charity search process, you can use the cause-week category filter to easily find all the charities listed below.

- Abandoned Children's Fund
- American Red Cross (South Jersey Chapter)
- Anera (American Near East Refugee Aid)
- CARE
- Child Find of America
- Children's Food Fund / World Emergency Relief
- CMMB (Catholic Medical Mission Board)
- Global Emergency Response and Assistance ANJ non profit corporation
- Global Impact
- HOPE worldwide
- Institute for Black Charities
- International Medical Corps
- International Orthodox Christian Charities
- Islamic Relief USA-IRUSA
- MAP International

\$5 per paycheck

Provides a senior with a nutritious meal five nights a week for one month

NJECC THE HEART OF NEW JERSEY GROWS STRONGER WITH YOU.

Donate Sep. - Dec. | charities.org/NJECC

Arts & Culture:

The arts offer much more than just mere entertainment. They contribute to economic vitality. They celebrate and support the humanities and living cultures, and preserve and nurture a sense of place and a healthy planet for future generations. There's also a strong relationship between arts and cultural engagement and educational achievement, health, and well-being.

If you care about supporting arts and culture, show that #NewJerseyGives by making your pledge to charities working in this cause area and ask your colleagues to join you.

\$2 per paycheck

Sends art supplies to two remote-learning special needs children weekly

Donate now at: www.charities.org/NJECC

New Jersey Employees Charitable Campaign

September - December 2023 | NJECC.net

Online Giving Portal:

www.charities.org/NJECC

(Pledge via recurring payroll deduction or donate via one-time credit/debit card)

The screenshot shows the NJECC 2023/2024 online giving portal. At the top left is the NJECC logo and the text "2023/2024". At the top right is a "Sign In" button. Below the header is a navigation menu with links for HOME, PLEDGING, CHARITY LOOK UP, LOGIN INSTRUCTIONS, FAQs, and CONTACT US. A message below the menu states: "Please do NOT use Internet Explorer. Use Chrome, Firefox, or Microsoft Edge for an optimal donation experience. Contact your IT team for assistance." The main content area features a large image of two smiling people, a man and a woman, holding bags of donations. Overlaid on the image is the text "MY COMMUNITY. MY CAUSE. MY CHOICE. MY NJECC!" in large, bold letters. Below this text is a green button with a dollar sign icon and the text "2023 Campaign Starts October 4". At the bottom of the image area, the text reads "New! Become a Sustaining Donor. Here is how it works:" followed by a list item: "(1) This Year: After logging in, select the 'Sustaining Recurring Payroll Donor' payment method and enter the recurring donation amount you want deducted from your paycheck each campaign year (January and December). Designate the charities you want your donations to support".

New Jersey Employees Charitable Campaign

September - December 2023 | NJECC.net

Online Giving Portal:

www.charities.org/NJECC

NOTES:

- Same login and donation process as last year
- Employees can login with their username and password from last year if they participated in last year's campaign
- Employees can use a cause category filter to search for charities, choose as many charities as they want to support, and decide how much to donate to each charity



Online Giving Portal: New Option! Sustaining Recurring Payroll Donor

Here's How it Works:

Step 1 - This Year:

After logging in, donors can select the “Sustaining Recurring Payroll Donor” payment method and enter the recurring donation amount to have deducted from their paycheck each campaign year (January and December), designate the charities they want their donations to support and submit their pledge.

Step 2 - Next Year:

Before next year’s campaign, donors who selected “Sustaining Recurring Payroll Donor” this year will receive an email notification with a summary of their pledge, asking them to confirm if they would like to keep their pledge going for another campaign year. If they choose to continue their pledge, they won’t have to log in and pledge next year unless they want to make changes to their pledge amount and/or charity designations. By opting-in to have their pledge continue each year, their recurring payroll deduction gifts will keep taking place automatically.

The screenshot shows a web interface for selecting a payment method. At the top, there is a red warning: "please select 24 pay periods below to ensure that your deductions reflect your intended pledge amount." Below this, a modal window titled "Choose a payment method by clicking its Add button to set up gift payments." contains a note: "NOTE: Please do NOT use Internet Explorer. Use Chrome, Firefox, or Microsoft Edge for an optimal donation experience. If you do not see any payment methods display below, please contact the New Jersey Employees Charitable Campaign Manager's Office at sobrien@njecc.net. You can also make your payroll deduction or check pledge using this pledge form." Three payment options are listed, each with an "Add" button: "Sustaining Recurring Payroll Donor" (highlighted with a green box), "One-Year Payroll Deduction", and "Credit/Debit Card". A "Close" button is at the bottom right.

Thank You/Donation Confirmation Page

- After an employee submits their donation online, a “Thank You” page will display and they will also be emailed a donation summary.
- The “Thank You” page and email will both include a link for the donor to download and display/share an “I gave” badge.


Pledge Confirmation: Thank You!

Thank you for your generous contribution. You have helped to make your community and the world a better place to live and work for all of us. Together, our pledges make a difference in the lives of thousands of individuals who rely on the charities that participate in our campaign.


You will be receiving an email confirming your proof of pledge shortly. Please allow for approximately five minutes for it to appear and check your spam/junk folder if you do not see it.

Next:
Now that you have demonstrated your commitment to our community, help spread the word and be the face of our NJECC community! Here are two ways to participate:

1. **“I support the NJECC” donor badge:** Download a jpg copy [here](#) (right-click on the graphic and save it to your computer). We encourage you to place your donor badge as part of your email signature or share it on social media to help make sure your New Jersey State colleagues know about the NJECC and how to join you in supporting charities they care about.



Thank you!
Sincerely,
The New Jersey Employees Charitable Campaign



Use QR Codes to Promote Campaign



For agencies with employees in the field who don't have easy access to a computer, we've created a QR code. When scanned using their phone or tablet, the QR code will take employees to the NJECC donation website where they can make their donation.



**MY COMMUNITY.
MY CAUSE. MY CHOICE.
MY NJECC!**

**SEP - DEC
2023**

DONATE NOW

WWW.CHARITIES.ORG/NJECC

Use QR Codes to Promote Campaign

We have created a version of the campaign flyer and editable flyer with the QR code for you to share, along with donor instructions on how to scan and use the QR code. You are also welcome to use the QR code image on any other campaign materials you use to promote the campaign. The QR codes and flyers with the QR code can be found in the coordinator promotional toolkit folder.



**MY COMMUNITY.
MY CAUSE. MY CHOICE.
MY NJECC!**

**SEP - DEC
2023**

DONATE NOW

WWW.CHARITIES.ORG/NJECC

New Jersey Employees
Charitable Campaign



52 & YOU



WHAT DOES 52 & YOU MEAN?

It means that \$2 per paycheck* (\$52/year) is all you need to pledge to make a difference!

Yes, you can pledge more!

52 & You

What does 52 & You mean?

It means that \$2 per paycheck* (\$52/year) is all you need to pledge to make a difference.

*yes, you can pledge more!



What does "52 & you" mean?

It means that **\$2** per paycheck* (**\$52**/year) is all **you** need to pledge to make a difference!

*yes, you can pledge more!

New Jersey Employees Charitable Campaign

September - December 2023 | NJECC.net

New! NJECC Traveling Trophy

An award will be presented to the department that earns the most points for their participation in the 2023 NJECC. Points are awarded for many components of running a successful campaign.

A PDF breakdown of criteria for how points are awarded can be found in the Volunteer Toolkit.



**MY COMMUNITY.
MY CAUSE. MY CHOICE.
MY NJECC!**

**SEP - DEC
2023**

DONATE NOW

WWW.CHARITIES.ORG/NJECC



NJJECC

**MY COMMUNITY.
MY CAUSE. MY CHOICE.
MY NJJECC!**

SEP - DEC 2023

WWW.CHARITIES.ORG/NJECC

THANK YOU!

For serving!

For your support and enthusiasm!

For inspiring others!

Being here today!!

I hope you are proud of yourself for all the times you've said "yes" – when all it meant was more work for you and was seemingly helpful only to someone else.

– Mister Rogers