

Help Others **RISE ABOVE.**

People Helping People, a New Jersey Tradition.



*New Jersey Employees
Charitable Campaign*

SEPTEMBER-DECEMBER

Become a sustaining donor.

Opt-in to keep your gift from last year going another year.

Sponsored by:



RESOURCE / REFERENCE GUIDE BOOK

Get Started: www.Charities.org/NJECC



STATE OF NEW JERSEY
OFFICE OF THE GOVERNOR
P.O. BOX 001
TRENTON
08625
(609) 292-6000

PHILIP D. MURPHY
GOVERNOR

September 2024

Dear Colleagues:

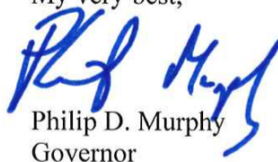
I am very proud of the commitment to public service demonstrated by our State workers. You have dedicated your professional lives to helping your fellow New Jerseyans, and your commitment to the New Jersey Annual Employees Charitable Campaign (NJECC) has provided millions of dollars to assist and support charitable organizations in our communities.

State and local public employees already uphold the tradition of helping the citizens of New Jersey in their daily roles. With your continued support, I am confident that the campaign will grow even more. No donation is too small, and any amount will go far. Each contribution will go directly toward improving the lives of those in need.

On behalf of the countless individuals and families who have benefitted from your generous support to the NJECC, I thank you and encourage you to continue to participate in this year's campaign. Participating in the NJECC is an opportunity to make a difference in the lives of so many people.

Thank you, again, for your continued support.

My very best,


Philip D. Murphy
Governor



PLEASE NOTE: All information contained in this codebook was supplied by the various federations and agencies. Errors, omissions, and other problems are the responsibility of the organization submitting the information to this campaign.

The New Jersey Employees Charitable Campaign

is the only authorized
fundraising solicitation of
employees in the public
workplace on behalf of
charitable organizations.

Since its creation,
the campaign
has raised over

\$52 million

for charitable organizations
– local, national, and
international.

For more information
about the NJECC, visit:
www.NJECC.net

Table of Contents

Letter from Governor Murphy	2
General Information About the NJECC	4
What Will My Gift Provide.....	6
How to Fill Out a Pledge Form.....	7
2022 NJECC Award Winners	8

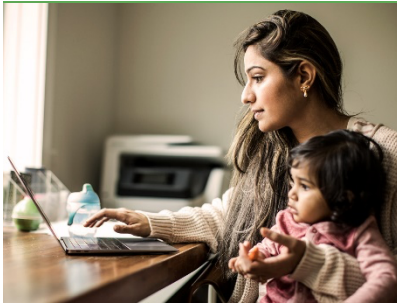
Agencies Listed by Federation:

United Way of Gloucester County	9
United Way of Monmouth & Ocean Counties	10
Jewish Federation of Greater MetroWest NJ (UJA)	11
Jewish Federation of Middlesex & Monmouth Counties	12
CHC: Creating Healthier Communities.....	12
America's Charities	16
Global Impact.....	18
EarthShare New Jersey.....	21
America's Best Charities	23
United Way of Greater Mercer County	34
United Way of Greater Union County.....	35
Unaffiliated Agencies	36

Index	44
--------------------	----

What is the NJECC?

Thanks to legislation that created the New Jersey Employees Charitable Campaign in 1985, employees of state agencies, universities, county government, municipalities and school districts throughout New Jersey enjoy the benefit of giving to many of their favorite charities through an annual workplace giving campaign that features the convenience of payroll deduction.



**Donations exceeded \$661,706
for charitable organizations in 2023.**

It's not hard to see why employees of the Garden State have responded so enthusiastically to the NJECC:

- It's an easy, effective and cost-efficient way to give to charities.
- Our contributions help improve the quality of life for people in communities locally, across the country and around the world.
- The campaign supports a wide variety of vital health and human services.
- All charities in the campaign must meet strict eligibility criteria.

How does it work?

Each fall, we get the opportunity to learn about the charities in the NJECC and choose which ones we want to help, and then go online or fill out a paper pledge form to indicate how much we wish to donate to which groups. You can make a one-time gift by check. Or, even better, your gift can be deducted from each paycheck beginning with the first pay period of 2025.

The campaign runs from September through December.

This directory provides information on all the charities in the campaign – a great resource not only for helping you make your choices, but also for finding help if you need it yourself.

What charities are involved?

One of the great benefits of the NJECC is the wide variety of charities and causes represented – there's something for everyone. They range from small local organizations to large and well-known national and international groups.

Those charities that wish to participate must meet stringent legal requirements and apply each year to participate.

- They are recognized by the IRS as 501(c)(3) nonprofit organizations and registered with the NJ Division of Consumer Affairs, Charities Registration Division
- They provide direct or indirect health and human services.

Why should I give?

- To help those who are less fortunate through no fault of their own.
- To support a favorite cause or charity on a regular basis.
- It's the right thing to do.
- It will make you feel great.
- It's tax deductible.



Low Overhead:

15% of the total dollars received are used to cover the administrative cost of the NJECC. This includes the 10% cap as mandated by the New Jersey State Treasury Department and an additional 5% as determined by the charities that participate in the campaign.

How much should I give?

How much to give is totally up to you. Your personal generosity is no one's business but your own and remains confidential. Still, many of us like to have some idea of what is appropriate to consider as a gift.

FIRST...you might consider participating as a leadership giver – one of the many people who like to do a little more by donating at the leadership giving levels.

SECOND...give what you feel is appropriate for you and your budget – any gift, no matter how large or small, can make all the difference in the world to the charities in this campaign.

Benefits of payroll deduction

Payroll deduction offers a special opportunity to do more and feel it less.

- It helps to minimize costs while maximizing your contribution.
- You can manage your own philanthropy...you know when deductions start and that you can end them at any time.
- It saves time and takes little effort.

Learn more and give:

www.njecc.net



Best of all...

by donating a specific amount from each paycheck, you can make a much more significant impact on causes you wish to help.

Examples of What Your Gift Can Buy

New Jersey Employees Charitable Campaign | September - December 2024

\$2 per pay period
= the price of 1 soda

(\$52 total pledge)



Provides a cancer patient with access to two support sessions, free information, and resources.



Provides trash bags and gloves for two stream clean-ups.



Provides an Adventure in a Box for a family.



Buys new shoes and school supplies for students.

\$5 per pay period
= the price of 1 Café Latte

(\$130 total pledge)



Helps fund confidential, barrier-free PTSD treatment for veterans and their families.



Provides babies access to physical therapy. Help improve how babies move and process information.



Provides medical supplies for surgeries in underserved areas.



Keeps utilities running for person struggling with recent job loss.

\$10 per pay period
= the price of 1 movie matinee

(\$260 total pledge)



Teaches more than 1,200 children how to avoid obesity and live healthy lives through nutrition and exercise.



Supports Litigation efforts to achieve racial justice and equality for all Americans.



Provides workforce readiness skills training and job placement for an unemployed parent.



Provides a basic access ramp for a home.

\$20 per pay period
= the price of 1 takeout meal

(\$520 total pledge)



Provides support to patients with critical financial aid for lifesaving treatments they otherwise can't afford.



Plants one tree in an urban low-income area.



Feed 600 rescued animals in need.



Helps organize support groups for individuals affected by mental health challenges.

\$50 per pay period
= the price of 1 concert ticket

(\$1,300 total pledge)



Rescues 10 animals from a puppy mill, hoarding, or fighting situation.



Enables a kidney patient with diabetes to purchase supplies to test their blood sugar.



Supports 8 victims of human trafficking with housing, counseling, education, and job training.



Provide vaccinations to prevent deadly diseases in vulnerable communities.



Thank you

www.Charities.org/NJECC



COPY #1 - PAYROLL OFFICE

New Jersey Employees Charitable Campaign



Leading the Way – Top 3 Campaigns in 2023

Top 3 Business Units \$\$ Raised and Top 3 Business Units # of Donors.

Top 3 Business Units \$\$ Raised

- Rutgers University
- Atlantic County Utilities Authority
- NJ Department of Environmental Protection

Top 3 Business Units # of Donors

- Atlantic County Utilities Authority
- Mercer County Board of Social Services
- NJ Department of Environmental Protection

2023 Chairperson's Awards

In recognition of Business Units who increased in **BOTH** donations and in participation.

- | | |
|---|--|
| <ul style="list-style-type: none">• Board of Public Utilities• Camden County BOSS• Camden County Government• Casino Control Commission• Freehold Regional High School District• Judiciary/Administrative Office of the Courts• NJ Department of Agriculture• NJ Department of Human Services• NJ Department of the Treasury• NJ Department of Transportation | <ul style="list-style-type: none">• NJ Economic Development Authority• NJ Education Facilities Authority• NJ Motor Vehicle Commission• NJ Turnpike Authority• Northfield City School District• Public Employment Relations Commission• South Jersey Transportation Authority• State of NJ Office of Public Defender• State of NJ Office of the Secretary of Higher Education |
|---|--|

2023 Champions in Giving Awards

In recognition of Business Units who increased either in dollars raised **OR** number of donors.

- | | |
|--|---|
| <ul style="list-style-type: none">• Burlington County Government• Camden County Improvement Authority• Cape May County Technical School Dist.• Civil Service Commission• Executive (Governor's Office)• Longport Borough• Mercer County Board of Social Services• New Jersey Institute of Technology• NJ Department of Children & Families• NJ Department of Community Affairs• NJ Department of Health• NJ Department of Law & Public Safety• NJ Office of Legislative Services | <ul style="list-style-type: none">• NJ Schools Development Auth.• NJ State Commission of Investigation• NJ State Parole Board• NJ Transit• NJ Water Supply Authority• Northern Burlington County School District• Ocean County Government• Port Authority of NY/NJ• Ramapo College of New Jersey• Rutgers University |
|--|---|

How to Use this Guide:

Listed below are more than 650 charities you can support through this year's NJECC. Press Control+F (PC) or Command+F (Mac) on your keyboard to search this guide for a specific charity. You can also find a list of charities organized by cause categories on page 48. When you're ready to donate, visit www.charities.org/NJECC, where you can also find an alphabetical listing.

United Way of Gloucester County

- | | |
|---|---|
| <p>1400 United Way of Gloucester County 856-845-4303 www.uwgcnj.org Raises funds to support Health and Human Services for local residents and creates collaborations to address community problems.</p> <p>1440 Abilities Solutions (Abilities Center of Southern NJ, Inc.) 856-848-1025 www.abilities4work.com Provide employment and employment related training to youth and adults, including Veterans, with disabilities and other barriers to full participation in the workforce.</p> <p>1407 Acenda 844-422-3632 www.acendahealth.org Whether its simply a helping hand or lifelong support, Acenda seeks to empower individuals of all ages to thrive and explore their greatest potential.</p> <p>1402 American Red Cross (Southern New Jersey) 856-365-7100 https://www.redcross.org/local/new-jersey/about-us/locations/southern-nj.html Prevents and alleviates human suffering in the face of emergencies by mobilizing the power of volunteers and the generosity of donors.</p> <p>1403 Arc Gloucester 856-848-8648 www.thearcgloucester.org Empowers individuals with intellectual and developmental disabilities, and their families to achieve their highest potential through advocacy, education and quality services.</p> <p>1404 Big Brothers Big Sisters Independence Region 215-790-9200 www.independencebigs.org To provide children facing adversity with strong and enduring, professionally supported one-to-one mentoring relationships that change their lives for the better, forever.</p> <p>1441 Boy Scouts of America, Garden State Council 609-261-5850 www.gardenstatescouting.org To prepare young people to make ethical and moral choices over their lifetime by instilling the values.</p> <p>1410 Center for Family Services, Inc. 856-964-1990 www.centerffs.org To support and empower individuals, families and communities to achieve a better life through vision, hope and strength.</p> <p>1439 FamCare, Inc. 856-794-1235 www.famcareinc.com To provide accessible, high quality reproductive and complementary healthcare services in a confidential environment to men, women and adolescents.</p> | <p>1436 Food Bank of South Jersey, Inc. 856-662-4884 www.foodbanksj.org Provides food to people in need, delivers health and wellness programs and designs sustainable solutions to help people improve their lives.</p> <p>1409 Girl Scouts of Central & Southern New Jersey 856-795-1560 www.gscsnj.org Builds girls of courage, confidence and character, who make the world a better place.</p> <p>1408 Glassboro Child Development Centers 856-881-3331 www.southjerseykids.org Provide programs and enrichment for children/youth that offer opportunities which empower and assist parents with social, emotional, physical and cognitive development of their children.</p> <p>1405 HollyDELL, Inc. 856-582-5151 www.hollydell.org Provide exceptional educational, social, emotional, therapeutic, and technological programs for individuals with physical and medical challenges from age 3 through adulthood.</p> <p>1429 Literacy New Jersey 732-906-5456 www.literacynj.org Improves the lives of adults by teaching them to read, write and speak English so they can participate in family, workplace and community life.</p> <p>1412 Maryville, Inc. 855-823-3428 www.maryvillenj.org Provide comprehensive, high quality drug and alcohol addiction treatment services for individuals and families affected by the disease of addiction, regardless of ability to pay.</p> <p>1411 Samaritan Healthcare & Hospice 856-596-1600 www.samaritannj.org Provide exceptional care to promote comfort, dignity, and quality of life for those living with serious illness or grief.</p> <p>1433 Volunteers of America Delaware Valley, Inc. 856-854-4660 www.voadv.org Provides community-based assistance to individuals in need so that they can lead independent, self-fulfilled lives.</p> <p>1426 YMCA Gloucester County 856-845-0720 www.ymcagloco.org Dedicated to the development of spirit, mind and body by providing programs and services to residents instilling Christian ideals of caring, honesty, respect and responsibility.</p> |
|---|---|

United Way of of Monmouth and Ocean Counties

- 2000 **United Way of Monmouth and Ocean Counties** | 732-938-5988 | www.uwmoc.org | Improving lives of youth and their families in Monmouth and Ocean Counties by focusing on education, financial stability, health and helping elderly age in place.
- 2072 **Affordable Housing Alliance** | 732-389-2958 | www.affordablehousingalliance.com | To improve the quality of life by developing, preserving affordable housing, providing services for housing affordability with education, helping communities meet their legal housing obligations.
- 2010 **Boy Scouts of America Jersey Shore Council** | 732-349-1037 | www.jerseyshorescouts.org | Develops character, self-confidence, and life skills in youth, building strong family values in a safe, structured, nurturing environment fostering teamwork and leadership.
- 1719 **Boys & Girls Club of Monmouth County** | 732-775-7862 | www.bgcmonmouth.org | "We empower all young people to reach their full potential through after-school and summer programming emphasizing academic enrichment, mentorship, life skills-building, and leadership development."
- 2037 **Caregiver Volunteers of Central Jersey** | 732-505-2273 | www.caregivervolunteers.org | Vital assistance to the elderly, disabled, Veterans, people with dementia and Caregivers. Services provided by trained volunteers. We are dedicated to bringing independence and joy.
- 1701 **Collier Youth Services** | 732-946-4771 | www.collieryouthservices.org | Collier Youth Services provides at-risk youth a chance to grow toward their potential in an environment that promotes belonging, dignity and hope.
- 2004 **Community Services of Ocean County/Meals on Wheels of Ocean County** | 609-978-6869 | www.csimow.org | Enabling Ocean County's older adults to maintain the highest level of independence while living in their own homes by providing nutrition and supportive social services.
- 2070 **Family Promise of Southern Ocean County** | 609-994-3317 | www.familypromisesoc.org | Reducing family homelessness by empowering families to move steadily toward self-sufficiency collaborating with faith based and community organizations by providing shelter, meals, and support services.
- 1703 **Food Bank of Monmouth and Ocean Counties, Inc.** | 732-918-2600 | www.fulfill.org | Our mission is to alleviate hunger and build food security in Monmouth and Ocean Counties; currently serving 1 and 10 residents in both counties.
- 1709 **Garden State Consumer credit Counseling, Inc. Navicore Solutions** | 800-992-4557 | www.navicoresolutions.org | We provide compassionate counseling solutions to consumers nationwide in the areas of personal finance, consumer credit, student loans, foreclosure prevention and housing.
- 2011 **Girl Scouts of the Jersey Shore** | 800-785-2090 | www.JerseyShoreGirlScouts.org | Serving k-12, Girl Scouts is committed to helping girls become women of courage, confidence and character, who make the world a better place!
- 2065 **House of Hope of Ocean County, Inc.** | 732-341-4447 | www.houseofhopeocean.org | The Hope Center provides resources, referrals, food and targeted financial assistance to clients as they work to overcome current life crises.
- 2015 **Long Beach Island Community Center** | 609-494-8861 | www.stfranciscenterlbi.org | Provides social services, education, and recreation programs to county residents regardless of age, ethnicity, gender, sexual orientation, or religious affiliation.
- 1708 **Monmouth Day Care Center** | 732-741-4313 | www.monmouthdaycare.com | Dedicated to providing a safe, stimulating environment in which children are nurtured and challenged intellectually, emotionally, socially and physically.
- 2005 **New Jersey Institute for Disabilities** | 732-549-6187 | www.njid.org | Regional multi-service agency for infants, children and adults with developmental and related disabilities, early interventions, education, therapeutic, residential, vocational programs and assistive technology.
- 2073 **O.C.E.A.N. Inc.** | 732-244-5333 | www.oceaninc.org | O.C.E.A.N., Inc. is committed to providing quality comprehensive services that improve the quality of life of individuals and families assisting them in moving towards self-sufficiency.
- 2069 **Ocean County YMCA, Inc.** | 732-341-9622 | <https://ocymca.org/> | The Y is the largest provider of child care and aquatic programs in Ocean County. We focus on youth, families, seniors and the disabled.
- 2031 **Team Randy, Inc.** | 732-914-9500 | www.teamrandy.com | An eight week day camp for physically challenged, non-challenged, and financially disadvantaged, intellectually able teens.

NEW JERSEY EMPLOYEES CHARITABLE CAMPAIGN

- 2003 **The Children's Home Society of New Jersey** | 609-695-6274 | www.chsofnj.org | Birth parent counseling, infant foster care, child maternal health, family support, child care, adoption, behavioral counseling, childhood separation and loss counseling, nutrition, and youth development.
- 2051 **Vetgroup, Inc.** | 609-971-7613 | www.vetnetwork.org | Provide supportive services which will assist veterans in the areas of employment, affordable housing, benefits and transportation to maintain or achieve self-sufficiency.
- 2074 **Visiting Nurse Association of Central Jersey** | 800-400-0981 | <https://vnahg.org/about-vna/> | VNAHG is dedicated to helping individuals / families achieve their best level of well-being by providing compassionate, coordinated, and innovative care in their homes / communities
- 2068 **Your Grandmother's Cupboard** | 732-240-0441 | www.yourgrandmotherscupboard.com | Grandmother's Cupboard was founded with the mission to provide clothing, shoes, food, toiletries, and other necessities of life to people with special needs.
- 1905 **JESPY House** | 973-762-6909 | www.jespyhouse.org | JESPY House provides services to meet the physical, mental and emotional needs of adults with learning and developmental disabilities, emphasizing independence, growth and community inclusion.
- 1906 **Jewish Community Center of Central NJ (JCC Central)** | 908-889-8800 | www.jccnj.org | The JCC committed to serving the Jewish community and the community at large by providing an array of social, recreational, educational and cultural programs.
- 1908 **Jewish Educational Center** | 908-355-4850 | www.thejec.org | Jewish Educational Center is a Pre-K through 12th Grade college preparatory school based on Modern Torah principles and values, preparing students for well rounded lives.
- 1909 **Jewish Family Service of Central NJ (JFS Central)** | 908-352-8375 | www.jfscentralnj.org | Jewish Family Service of Central NJ is a family oriented non-sectarian social service agency providing a wide array of services to residents of Union County
- 1922 **Jewish Family Service of MetroWest (JFS)** | 973-765-9050 | www.jfsmetrowest.org | Comprehensive social service agency providing mental-health counseling, support services for children, families, individuals with disabilities, Holocaust survivors and individuals experiencing financial challenges.

Jewish Federation of Greater MetroWest NJ (UJA)

- 1900 **Jewish Federation of Greater MetroWest NJ (UJA)** | 973-929-3000 | www.jfedgmw.org | Federation is the Greater MetroWest Jewish community's philanthropic core. We care for those in need and build Jewish community locally, in Israel, and worldwide.
- 1901 **Daughters of Israel** | 973-400-3307 | www.daughtersofisrael.org | Jewish nursing, residential care facility, provides short-term rehabilitation services for sub-acute care, long-term care, memory care, hospice, palliative care and respite stays.
- 1902 **Friendship Circle** | 973-251-0200 | www.fcny.com | Friendship Circle provides families who have children and teens with special needs with a wide array of innovative respite, social and recreational programs.
- 1903 **Golda Och Academy (school)** | 973-602-3600 | www.golaochacademy.org | Affiliated with the Conservative movement while welcoming students and families from a range of synagogue affiliations and Jewish expression, grades pre-K-12.
- 1904 **Gottesman RTW Academy (school)** | 973-584-5530 | www.grtwacademy.org | Gottesman RTW Academy is a co-educational community school serving children through eighth grade. Early Childhood Center offers programs for children three months through Junior Kindergarten.
- 1912 **Jewish Service for the Developmentally Disabled of MetroWest (JSDD)** | 973-272-7141 | www.jsddmetrowest.org | Multi-purpose agency dedicated to providing integrated program of community education, advocacy, services for individuals with developmental disabilities and families, including residential and day programming.
- 1913 **Jewish Vocational Service of MetroWest (JVS)** | 973-674-6330 | www.jvsnj.org | JVS, a human services agency providing vocational training to adult individuals with disabilities, who have barriers to employment, provide basic education, career counseling, home services.
- 1915 **Joseph Kushner Hebrew Academy/Rae Kushner Yeshiva High School** | 862-437-8000 | www.jkha.org and www.rkyhs.org | A Modern Orthodox yeshiva, grades pre-K-12. Sinai Special Needs Institute catering to children with developmental challenges.
- 1920 **YM-YWHA of Union County** | 908-289-8112 | www.uniony.org | A Jewish community center serving Union and parts of Essex Counties with child care, summer camp, fitness center, gym, pool, senior and adult programming.

Jewish Federation of Middlesex and Monmouth Counties

3000 **Jewish Federation of Middlesex and Monmouth Counties** | 732-588-1800 | www.jewishheartnj.org | Brings together people, partners and resources fulfilling critical needs in our community by caring for vulnerable, inspiring the next generation and forging connections with Israel.

CHC: Creating Healthier Communities

0500 **CHC: Creating Healthier Communities** | 800-654-0845 | <http://www.CHCimpact.org> | Building partnerships to address health inequity by fostering trusted community engagement, offering programs and services, and fundraising to support communities where everyone can thrive.

4249 **A Kid Again** | 856-889-5605 | <http://www.akidagain.org> | We provide Hope, Happiness and Healing for children with life-threatening conditions and their families through cost-free, in-person, year-round events called Adventures to local zoos, amusement parks, sporting events, and family fun nights.

4267 **Action for Healthy Kids** | 800-416-5136 | <https://www.actionforhealthykids.org/> | We partner with families and schools in under-resourced communities to ensure all kids can eat healthier, be more active, and build stronger relationships.

4268 **AIDS Programs of the National Minority AIDS Council** | 202-853-1847 | <https://www.nmac.org> | NMAC (formerly National Minority AIDS Council) leads with race to urgently fight for health equity and racial justice to end the HIV epidemic in America.

0599 **AIDS Research Foundation (amfAR)** | 800-392-6327 | <https://www.amfar.org> | Invests in innovative AIDS cure research; advocates increased funding for research/prevention/treatment and protecting the rights of all people affected by HIV/AIDS.

4269 **Alliance Defending Freedom** | 800-835-5233 | <http://www.adflegal.org> | The world's largest legal organization committed to protecting religious freedom, free speech, marriage and family, parental rights, and the sanctity of life.

4003 **Alpha One Foundation** | 305-567-9888 | <https://www.alpha1.org> | The Alpha-1 Foundation is committed to finding a cure for Alpha-1 Antitrypsin Deficiency and to improving the lives of people affected by Alpha-1 worldwide.

0572 **ALS Association** | 202-464-8648 | <https://www.als.org> | The ALS Association leads the fight against Lou Gehrig's Disease through research, advocacy and compassionate care and support of people with ALS and their families.

0555 **Alzheimer's Association** | 800-272-3900 | <http://www.alz.org> | We lead the way to end Alzheimer's and all other dementia—by accelerating global research, driving risk reduction and early detection, and maximizing quality care and support.

0574 **Alzheimer's New Jersey** | 973-586-4300 | <http://www.alznj.org> | Provides local programs for people in NJ affected by Alzheimer's disease and other dementias. Services: Helpline, support groups, respite assistance, education, advocacy and research support.

4247 **American Bible Society** | 212-408-1200 | <https://www.americanbible.org> | Making the Bible available to everyone in a language and format they can understand and afford, so they may experience its life-changing message.

4255 **American Cancer Society** | 800-227-2345 | <https://www.cancer.org> | Improving lives of people with cancer and their families through advocacy, research, and patient support, working to end cancer as we know it, for everyone.

4226 **American Council of the Blind** | 612-332-3242 | <https://www.acb.org> | Our mission is to increase the independence, security, equality of opportunity, and quality of life for all blind and visually impaired people.

0503 **American Diabetes Association** | 800-342-2383 | <http://www.diabetes.org> | Committed to finding a cure for diabetes, improving care, and providing information and support to help fight diabetes through research, community programs and advocacy.

4256 **American Family Association, Inc.** | 662-844-5036 | <http://www.afa.net> | Educates and motivates Christians through radio, video, internet and print to act on issues affecting families. Examples: media indecency, pornography, abortion, entertainment, education, and parenting.

4101 **American Foundation for Suicide Prevention** | 212-363-3500 | <https://www.afsp.org> | We are dedicated to saving lives and bringing hope to those affected by suicide.

0616 **American Heart Association** | 800-242-8721 | <http://www.heart.org> | We fight heart disease and stroke – the world's two leading causes of death – through innovative research, public education/training, and changes to public policy.

NEW JERSEY EMPLOYEES CHARITABLE CAMPAIGN

- 0505 **American Kidney Fund** | 800-638-8299 | <https://www.kidneyfund.org> | We fight kidney disease on all fronts by addressing education, advocacy, financial assistance, prevention, research; spending 97 cents of every donated dollar on programs.
- 0575 **American Liver Foundation** | 212-668-1000 | <http://www.liverfoundation.org> | The nation's leading non-profit that facilitates, advocates and promotes education, support and research for prevention, treatment and cure of liver disease.
- 0576 **American Lung Association** | 212-315-8700 | <http://www.lung.org> | The mission of the American Lung Association is to save lives by improving lung health and preventing lung disease through research, education and advocacy.
- 0509 **American Parkinson Disease Association** | 800-223-2732 | <http://www.apdaparkinson.org> | Dedicated to funding Parkinson's research, providing comprehensive medical information, extensive public/professional education and support services.
- 4257 **Arthritis Foundation** | 800-283-7800 | <http://www.arthritis.org> | The Arthritis Foundation pursues a cure for America's #1 cause of disability while championing the fight to conquer arthritis with science, resources, advocacy, and community.
- 0508 **Autism Speaks** | 888-777-6227 | <http://www.autismspeaks.org> | Promotes lifelong solutions for needs of individuals with autism and families through advocacy/support; increasing ASD acceptance and advancing research into causes and better interventions.
- 4258 **Black Women's Health Imperative** | 888-834-8451 | <http://www.bwhi.org> | The Black Women's Health Imperative is the only national organization dedicated to improving the physical, emotional and financial health of America's Black Women and girls.
- 4235 **Breast Cancer Research Foundation, Inc.** | 646-497-2600 | <https://www.bcrf.org> | The Breast Cancer Research Foundation is committed to achieving prevention and a cure for breast cancer by advancing the world's most promising research.
- 4279 **Cancer Hope Network** | 908-879-4039 | <https://www.cancerhopenetwork.org/> | To instill hope in cancer patients and their loved ones through 1:1 peer support from survivors and caregivers who have faced a similar experience.
- 0604 **Cancer Research America - NCFR** | 800-321-2873 | <https://www.nfcr.org/> | Dedicated to providing scientists the funding they need to make game-changing discoveries in cancer treatments, detection and ultimately, a cure for all types of cancer.
- 0549 **Cancer Research Institute** | 800-992-2623 | <http://www.cancerresearch.org> | Cancer Research Institute supports and coordinates scientific and clinical efforts that will lead to the immunological treatment, control, and prevention of cancer.
- 4044 **Care Net** | 800-518-7909 | <https://www.care-net.org> | Care Net offers compassion, hope, and help to women and men considering abortion by presenting realistic alternatives and Christ-centered support through our life-affirming network.
- 0504 **Cerebral Palsy Foundation** | 212-520-1686 | <https://www.yourcpf.org> | The Cerebral Palsy Foundation works to transform the lives of people with cerebral palsy (and related disabilities) today through research, innovation and collaboration.
- 4270 **Children's Cancer Assistance Fund** | 314-241-1600 | <http://www.thencs.org> | Thousands of children with cancer, internationally, are affected by inadequate or nonexistent medical care. We distribute donated pharmaceuticals and medical supplies in 42 countries.
- 0618 **Children's National Hospital Foundation** | 301-565-8500 | <https://childrensnational.org/> | As the nation's children's hospital, the mission of Children's National is to excel in Care, Advocacy, Research and Education.
- 0579 **Children's Tumor Foundation** | 800-323-7938 | <http://www.ctf.org> | Funds research, patient support and public awareness of the neurofibromatosis (NF1, NF2, and Schwannomatosis) - genetic disorders that cause random tumor growth throughout the body.
- 4271 **Christian Military Fellowship** | 303-761-1959 | <http://www.cmfhq.org> | Ministering to America's military and their families worldwide empowering them in their Christian faith, advancing Bible studies, linkups, mentoring, fellowship, resources, personal contact and encouragement.
- 0605 **Colorectal Cancer Alliance** | 202-628-0123 | <http://www.ccalliance.org> | The Alliance provides support for all individuals navigating colorectal cancer, raises awareness of preventive measures; and funds research to end colorectal cancer in our lifetime.

NEW JERSEY EMPLOYEES CHARITABLE CAMPAIGN

- 4281 **Convoy of Hope** | 417-851-5402 | <http://www.convoyofhope.org> | An international, faith-based, nonprofit with a mission "To feed the world and eliminate poverty through children's feeding initiatives, community outreaches, disaster response and partner resourcing."
- 4282 **Covenant House International** | 800-388-3888 | <http://www.covenanthouse.org> | 52 years of helping over one million young people facing homelessness to gain the skills necessary to build their futures.
- 4260 **Crohn's & Colitis Foundation** | 800-932-2423 | <http://www.crohnscolitisfoundation.org> | Our mission is to cure Crohn's disease and ulcerative colitis, and to improve the quality of life of children and adults affected by these diseases.
- 0516 **Cystic Fibrosis Foundation** | 800-344-4823 | <http://www.cff.org> | The mission of the Cystic Fibrosis Foundation is to cure cystic fibrosis and provide all people with CF the opportunity to lead full, productive lives.
- 0515 **Deborah Heart & Lung Center** | 609-893-6611 | <http://www.demanddeborah.org> | Deborah is a global leader in cardiac, pulmonary, and vascular care. Deborah is the only hospital in the USA that has never billed a patient.
- 0442 **Doctors Without Borders/Médecins Sans Frontières USA** | 212-679-6800 | <https://www.doctorswithoutborders.org> | An independent, international medical humanitarian organization that delivers emergency aid to people affected by armed conflict, epidemics and natural disasters in more than 70 countries.
- 0583 **Epilepsy Foundation** | 800-332-1000 | <https://www.epilepsy.com> | Epilepsy Foundation's mission: stop seizures and SUDEP, find a cure, and overcome challenges created by epilepsy through education, advocacy, and research to accelerate new therapies.
- 4272 **Fisher House Foundation** | 888-294-8560 | <https://www.fisherhouse.org> | Fisher Houses provide military families housing close to a loved one during hospitalization for an illness, disease, or injury.
- 4212 **Glaucoma Research Foundation** | 415-986-3162 | <http://www.glaucoma.org> | Cure glaucoma and restore vision through innovative research.
- 4273 **Hazelden Betty Ford Foundation** | 866-831-5700 | <http://www.hazeldenbettyford.org> | Hazelden restores hope, healing and health to people affected by addiction. We support families and individuals through a comprehensive approach to treatment, publishing, research, education, advocacy and prevention.
- 0518 **Huntington's Disease Society of America** | 212-242-1968 | <http://www.hdsa.org> | HDSA is dedicated to improving the lives of people with Huntington's disease and their families through support of research, providing information and resources and education.
- 4262 **International Justice Mission** | 703-465-5495 | <https://www.ijm.org> | We rescue people from trafficking, modern slavery & violence and restore survivors to safety & strength, hold criminals accountable and make justice unstoppable.
- 4252 **JDRF International** | 800-533-2873 | <http://www.jdrf.org> | JDRF is the leading global organization funding type 1 diabetes (T1D) research. Our mission is to cure, prevent and treat T1D and its complications.
- 0523 **Leukemia & Lymphoma Society** | 888-557-7177 | <http://www.lls.org> | The Leukemia & Lymphoma (LLS) mission: Cure leukemia, lymphoma, Hodgkin's disease and myeloma, and improve the quality of life of patients and their families.
- 0609 **Leukemia Research Foundation** | 847-424-0600 | <https://leukemiarf.org> | The Leukemia Research Foundation's mission is to cure leukemia by funding innovative research, and to support patients and families. With more than \$83M raised in support of this mission, we are on the path to finding a cure – and won't stop until we do.
- 0520 **Lupus Foundation of America** | 202-349-1155 | <http://www.lupus.org> | LFA is the only national force fighting to solve the cruel mystery of lupus while giving caring support to those who suffer from its impact.
- 0525 **March of Dimes** | 888-663-4637 | <https://www.marchofdimes.org> | March of Dimes fights for the health of moms and babies. We support research, lead programs, and provide education and advocacy to support every baby.
- 4274 **MAZON: A Jewish Response to Hunger** | 310-442-0020 | <http://mazon.org> | Founded in 1985, we are a national nonprofit organization working to end hunger among people of all faiths and backgrounds in the US and Israel.
- 0538 **Mental Health America (formerly National Mental Health Association)** | 800-969-6642 | <https://mhanational.org> | Mental Health America, is the nation's leading community-based non-profit dedicated to helping all people achieve wellness by living mentally healthier lives.
- 0526 **Mental Health Association in New Jersey** | 973-571-4100 | <http://www.mhanj.org> | MHANJ works to expand access to behavioral health care for children, adults and families through education, peer to peer support services and advocacy.

NEW JERSEY EMPLOYEES CHARITABLE CAMPAIGN

- 4017 **Mercy Ships** | 903-939-7000 | <https://www.mercyships.org> | Delivers free world-class healthcare to some of the world's poorest nations while training local surgeons and medical workers, increasing developing African nations' healthcare capacity.
- 4243 **Military Community Youth Ministries** | 800-832-9098 | <http://www.mcym.org> | Caring for military families through relational ministry to military teens worldwide. Partnering with Young Life and the local chapel. Where friends, fun and faith connect.
- 0527 **Muscular Dystrophy Association** | 800-572-1717 | <http://www.mda.org> | MDA's mission is to empower the people we serve to live longer, more independent lives.
- 0541 **NAMI National** | 703-524-7600 | <http://www.nami.org> | NAMI National provides advocacy, education, support and public awareness so that all individuals and families affected by mental illness can build better lives.
- 0588 **National Bleeding Disorders Foundation** | 212-328-3700 | <http://www.hemophilia.org> | The National Bleeding Disorders Foundation is dedicated to finding cures for inheritable blood disorders and to addressing and preventing complications through research, education, and advocacy.
- 4275 **National Breast Cancer Foundation, Inc.** | 972-248-9200 | <https://www.nationalbreastcancer.org/> | NBCF's mission is Helping Women Now by providing help and inspiring hope to those affected by Breast Cancer through early detection, education and support services.
- 0590 **National Kidney Foundation (Headquarters)** | 212-889-2210 | <http://www.kidney.org> | NKF is a lifeline for all people affected by kidney disease. As pioneers of research and innovation, NKF focuses on the whole patient.
- 0591 **National Multiple Sclerosis Society** | 800-344-4867 | <http://www.nationalmssociety.org> | Providing programs and services for those affected by multiple sclerosis including financial assistance, education, information and resources, wellness, research, support groups, referrals and counseling.
- 0536 **National Psoriasis Foundation** | 800-723-9166 | <http://www.psoriasis.org> | To drive efforts to cure psoriatic disease and improve the lives of those affected.
- 4019 **Nazarene Compassionate Ministries, Inc.** | 800-310-6362 | <https://www.ncmi.org> | Challenged by faith to end poverty. Promotes long-term solutions to poverty through training, gifts-in-kind, economic and community development; also responds to disasters.
- 0514 **NMDP** | 763-406-8670 | <http://www.bethematch.org> | We cure patients with leukemia, lymphoma, and other blood disorders by eliminating racial disparities in healthcare and providing access to life-saving bone marrow transplants.
- 4283 **Operation Restored Warrior Project** | 719-260-1213 | <http://www.operationrestoredwarrior.org> | Healing veterans of PTSD through a life-changing five day program at no cost to the veteran. Led by combat veterans. 100% effective!
- 0593 **Pancreatic Cancer Action Network** | 310-725-0025 | <http://www.pancan.org> | In our urgent mission to save lives, we attack pancreatic cancer on all fronts: research, clinical initiatives, patient services and advocacy.
- 0553 **Parkinson's Foundation** | 800-473-4636 | <https://www.parkinson.org> | The Parkinson's Foundation makes life better for people with Parkinson's by improving care and advancing research toward a cure.
- 0547 **Pet Partners** | 425-679-5503 | <http://www.petpartners.org> | Greater access to therapy animal visits ensures veterans, children, patients, and seniors can benefit from the physical and emotional impact of the human-animal bond.
- 0539 **Prevent Child Abuse New Jersey** | 732-246-8060 | <http://www.preventchildabusenj.org> | Prevent Child Abuse-New Jersey builds a brighter future for children by promoting family wellness, positive parenting, healthy child development and nurturing communities.
- 4022 **Prison Fellowship Ministries** | 800-206-9764 | <http://www.prisonfellowship.org> | Helps restore those affected by crime and incarceration and strives to make prisons safer and more rehabilitative by supporting prisoners, former prisoners, and their families.
- 4232 **Samaritan's Purse** | 828-262-1980 | <http://www.samaritanspurse.org> | Christian relief agency, led by Franklin Graham, providing food, medicine, clothing, shelter, and other emergency assistance to victims of war, poverty, disease, and natural disasters.
- 4263 **Smile Train** | 800-932-9541 | <https://www.smiletrain.org> | We've supported safe and quality cleft care for 1.5M+ children and will continue to do so until every child in need has access to care.
- 0597 **St. Jude Children's Research Hospital** | 800-822-6344 | <http://www.stjude.org> | Researches, treats and defeats childhood cancer and other life-threatening diseases. Families never receive a bill from St. Jude for treatment, travel, housing or food.

NEW JERSEY EMPLOYEES CHARITABLE CAMPAIGN

- 4264 **Susan G. Komen** | 877-465-6636 | <https://www.komen.org> | Save lives by meeting the most critical needs of our communities and investing in breakthrough research to prevent and cure breast cancer
- 0513 **The Arc of New Jersey** | 732-246-2525 | <http://www.arcnj.org> | Providing services, support, information and advocacy for children and adults with intellectual and developmental disabilities, and their families, all across New Jersey.
- 4284 **The Headstrong Project** | 678-832-7840 | <https://theheadstrongproject.org/> | The Headstrong Project offers confidential, stigma-free PTSD treatment to veterans, service members, and their families. Our goal: help clients "Triumph Over Trauma".
- 4285 **The Michael J. Fox Foundation for Parkinson's Research** | 800-708-7644 | <http://www.michaeljfox.org> | The Michael J. Fox Foundation's urgent goal: eliminate Parkinson's disease in our lifetime. MJFF is the largest non-profit funder of PD research.
- 4244 **The Navigators** | 866-568-7827 | <https://www.navigators.org/> | TO ADVANCE THE GOSPEL OF JESUS AND HIS KINGDOM INTO THE NATIONS THROUGH SPIRITUAL GENERATIONS OF LABORERS LIVING AND DISCIPLING AMONG THE LOST.
- 4245 **The Society of Saint Andrew, Inc.** | 434-299-5956 | <https://www.endhunger.org> | Our gleaning programs save good produce from going to waste and provide hungry neighbors across the United States with fresh healthy food.
- 4286 **The Steve Fund** | 401-249-0044 | <https://www.stevelfund.org> | The Steve Fund is dedicated to supporting the mental health and emotional well-being of young people of color.
- 4265 **The V Foundation** | 919-380-9505 | <https://www.v.org> | We fund game-changing research and all-star scientists to accelerate victory over cancer and save lives.
- 4009 **Unbound** | 913-384-6500 | <http://www.unbound.org> | Unbound partners with families living in poverty and invests in their dreams. We help young people achieve their educational goals and build better futures.
- 4054 **United Breast Cancer Foundation** | 877-822-4287 | <http://www.ubcf.org> | Provide financial aid, emotional support, product donations, fund screenings, and education through life-supporting programs. Serving women, men, patients, survivors, families, at-risk, general population.
- 4031 **Voice of the Martyrs, Inc.** | 800-747-0085 | <https://www.persecution.com> | Serving persecuted Christians in the world's most difficult and dangerous places; bringing hope through persecution response, front-line worker support, and Bible distribution.
- 4248 **Water Mission** | 843-769-7395 | <https://www.watermission.org> | Every person deserves access to safe water, no matter where they live. Partnering with Water Mission brings safe water to communities that need it most.
- 4240 **World Emergency Relief / Children's Food Fund** | 909-593-7140 | <https://www.WER-US.org> | Our focus is to combat hunger, provide medical assistance, improve access to safe water, advocate for equity in education, and respond to natural disasters.
- 0558 **ZERO Prostate Cancer** | 202-463-9455 | <https://zerocancer.org/> | Mission to end prostate cancer by advancing research, providing support, and creating solutions to achieve health equity to meet the needs of our community.

America's Charities

- 3200 **America's Charities** | 703-222-3861 | www.charities.org | Working to build strong communities. Addressing needs of children, families, communities by helping employers and employees support our member charities' programs.
- 8217 **AARP Foundation** | 800-775-6776 | www.aarp.org/aarp-foundation/ | AARP Foundation creates and advances effective solutions to reduce poverty for and with older adults.
- 3268 **American Center for Law and Justice** | 800-342-2255 | www.aclj.org | Specializing in constitutional law, the ACLJ is dedicated to the concept that freedom and democracy are God-given inalienable rights that must be protected.
- 3395 **Alzheimer's Disease Research** | 301-556-9340 | www.brightfocus.org/ADR | Alzheimer's Disease Research is designed to provide initial funding for highly innovative experimental research and curative ideas to cure this disease once and for all.
- 3240 **Amnesty International USA** | 212-807-8400 | www.amnestyusa.org | Our history spans 60+ years and includes a presence in over 150 countries and 10 million supporters. We defend the human rights of people globally.
- 3297 **Best Friends Animal Society** | 435-644-2001 | www.bestfriends.org | Working with you- and groups all across the country to stop the killing in our nation's animal shelters. Together, we can Save Them All.

NEW JERSEY EMPLOYEES CHARITABLE CAMPAIGN

- 3226 **CureSearch for Children's Cancer** | 800-458-6223 | www.curesearch.org | CureSearch funds research projects designed to find new and better therapies for children's cancers and hosts collaborative opportunities for leaders across the pediatric cancer ecosystem.
- 3260 **Diabetes Research & Wellness Foundation** | 202-454-1606 | www.diabeteswellness.net | To help find the cure for diabetes and until that goal is achieved, provide the care needed to combat the life-threatening complications of this disease.
- 3266 **Feed the Children** | 405-942-0228 | www.feedthechildren.org | A leading organization in the U.S. dedicated to ending hunger at home and internationally. We bring together caring individuals to serve children, families, and communities.
- 3287 **Fòs Feminista** | 212-248-6400 | www.fosfeminista.org | Fòs Feminista to advance sexual and reproductive health, rights, and justice across the Global South.
- 3208 **Humane Society International** | 202-452-1100 | www.hsi.org | Global animal welfare organization working to end animal abuse from dog meat farms, wildlife threats, street dog welfare programs, factory farming and more.
- 3222 **Make-A-Wish Foundation of America** | 800-722-9474 | www.wish.org | We create life-changing wishes for children with critical illnesses. A wish helps a child replace fear with confidence, sadness with joy and anxiety with hope.
- 3255 **Mothers Against Drunk Driving** | 877-275-6233 | www.madd.org | Prevents tragedies through proven prevention strategies and provide supportive services at no charge to victims and survivors.
- 3233 **Multiple Sclerosis Association of America** | 800-532-7667 | www.MyMSAA.org | MSAA is a national nonprofit founded in 1970. Dedicated to improving lives through support and direct services to individuals with MS, families, and care partners.
- 3396 **NAACP Foundation** | 877-622-2798 | www.naacp.org | We envision an inclusive community rooted in liberation where all persons can exercise their civil and human rights without discrimination.
- 3209 **NAACP Legal Defense and Educational Fund, Inc.** | 212-965-2200 | www.naacpldf.org | LDF is America's premier legal organization fighting for racial justice. We defend and advance the full dignity and citizenship of Black people in America.
- 3212 **National Black Child Development Institute** | 202-833-2220 | www.nbcdi.org | The mission of the National Black Child Development Institute (NBCDI) is to improve the quality of life for Black children and families.
- 3242 **National Down Syndrome Society** | 800-221-4602 | www.ndss.org | NDSS empowers individuals with Down syndrome and their families by driving policy change, providing resources, engaging with local communities, and shifting public perceptions.
- 3224 **National Fallen Firefighters Foundation** | 301-447-1365 | www.firehero.org | Sponsors Memorial Weekend honoring America's fallen firefighters; Assists their families with scholarships and emotional support programs; Provides training for fire service; Building National Memorial Park
- 3201 **Ovarian Cancer Research Alliance** | 212-268-1002 | www.ocrahope.org | Ovarian Cancer Research Alliance is the leading organization in the world fighting ovarian cancer on all fronts while supporting patients and their families.
- 3228 **PetSmart Charities, Inc.** | 800-423-7387 | www.PetSmartCharities.org | As the leading funder of animal welfare across North America we fund organizations that help transform the lives of pets and those who love them.
- 3211 **Rails-to-Trails Conservancy** | 202-331-9696 | www.railstotrails.org | Converts thousands of miles of unused railroad corridors into public trails for walking, bicycling, hiking, skating, horseback riding, cross-country skiing, wildlife habitats and nature appreciation.
- 3229 **Reading Is Fundamental, Inc. (RIF)** | 877-743-7323 | www.rif.org | RIF provides books and literacy support materials to children, educators, families, and literacy volunteers across the country to spark the joy of reading.
- 3246 **Reproductive Freedom For All Foundation** | 202-973-3000 | www.reproductivefreedomforallfoundation.org/ | With 4+ million members representing every state, Reproductive Freedom for All is on the front lines organizing and mobilizing to preserve and expand reproductive freedom.
- 3241 **Ronald McDonald House Charities** | 630-623-7048 | www.rmhc.org | RMHC provides compassionate care and resources to children and families served by leading hospitals, providing access to quality health care, and enabling family-centered care worldwide.
- 3225 **Southern Poverty Law Center** | 888-414-7752 | www.splcenter.org | Using litigation, education, and other forms of advocacy, the SPLC works toward making the ideals of equal justice and equal opportunity a reality.

NEW JERSEY EMPLOYEES CHARITABLE CAMPAIGN

- 3205 **The Conservation Fund** | 703-214-4039 | www.conservationfund.org | Conservation should work for everyone—so we create solutions that make environmental AND economic sense. More than 95% of annual spending goes to conservation programs.
- 3283 **The Hole in the Wall Gang Fund** | 203-772-0522 | www.holeinthewallgang.org | Founded by Paul Newman, a non-profit summer camp and year-round center providing free services to children with life-threatening illnesses.
- 3214 **The Humane Society of the United States** | 202-452-1100 | www.humanesociety.org | Confronting suffering for ALL animals in puppy mills, factory farms, animal testing and other cruel industries. Help us end all animal cruelty.
- 3394 **The Obama Foundation** | www.obama.org/ | Join us in offering scholarships and mentorship, connecting rising leaders from around the globe, and engaging college students with their local communities.
- 3398 **Thurgood Marshall College Fund** | 202-507-4851 | www.tmcf.org | TMCF moves low-resource, high-achieving students attending publicly-supported HBCUs to and through college and into economically sustainable careers, through scholarships, capacity building and career preparation.
- 3295 **WOMEN'S WAY** | 215-985-3322 | www.womensway.org | WOMEN'S WAY advances gender and racial equity in the Greater Philadelphia region by removing barriers that hold women back through grantmaking, research and education.
- 3213 **Wounded Warrior Project, Inc.** | 877-832-6997 | www.woundedwarriorproject.org | Transforms the lives of America's injured post-9/11 military veterans and their families through free programs supporting mental, physical, and financial health, and long-term rehabilitative care.
- 0472 **Action Against Hunger** | 877-777-1420 | www.actionagainsthunger.org | Global humanitarian organization that takes decisive action against the causes and effect of hunger.
- 0441 **Alight (American Refugee Committee)** | 800-875-7060 | www.wearealight.org | Building a meaningful life for and with the displaced. Not simply addressing basic needs, but building a life filled with joy, dignity, connection and purpose.
- 0440 **American Jewish World Service** | 800-889-7146 | www.ajws.org | Inspired by the Jewish commitment to justice, we work to realize human rights and end poverty in Africa, Asia, Latin America, and the Caribbean.
- 0403 **American Near East Refugee Aid (Anera)** | 202-266-9700 | www.anera.org | Provides humanitarian assistance and sustainable development to advance the well-being of refugees and other vulnerable communities in the Middle East.
- 0434 **Americares** | 800-486-4357 | www.americares.org | To save lives and improve health for people affected by poverty or disaster so they can reach their full potential.
- 0453 **Amref Health Africa** | 212-768-2440 | www.amref.org | Amref's mission is to empower the people of Africa, through better health, to escape poverty and improve the quality of their lives.
- 0436 **Ashoka** | 703-600-8334 | www.ashoka.org | Ashoka advances an "Everyone a Changemaker" world - where all citizens are powerful and have the changemaking skills to solve complex social problems.
- 0404 **CARE** | 800-422-7385 | www.care.org | Started in 1945 delivering CARE Packages to war-torn Europe. Today, working around the globe to save lives, defeat poverty and achieve social justice.
- 0483 **ChildFund International** | 800-776-6767 | www.childfund.org | Helping deprived, excluded and vulnerable children have the capacity to become young adults and leaders who bring lasting and positive change to their communities.
- 0444 **Children International** | 800-888-3089 | www.children.org | We aim to create a world without poverty where every child, family and community is connected, productive and thriving, through health, education, empowerment and employment.
- 0406 **Church World Service** | 800-297-1516 | www.cwsglobal.org | A faith-based organization transforming communities around the globe through just and sustainable responses to hunger, poverty, displacement and disaster.

Global Impact

- 0400 **Global Impact** | 800-836-4620 | www.charity.org/give | Inspiring greater giving to foster critical humanitarian development and reduce global inequities; supporting international causes such as disaster response, global health, education and economic development.
- 0423 **Accion** | 202-393-5113 | www.accion.org | Committed to creating a financially inclusive world that empowers people, small businesses, and communities, with a legacy in microfinance and fintech impact investing.

NEW JERSEY EMPLOYEES CHARITABLE CAMPAIGN

- 0461 **Clinton Foundation** | 646-778-5179 | www.clintonfoundation.org | We improve lives by working together with partners across the U.S. and worldwide to create economic opportunity, improve public health, and inspire civic engagement.
- 0474 **CMMB (Catholic Medical Mission Board)** | 800-678-5659 | www.cmmb.org | Inspired by the example of Jesus, CMMB works in partnership globally to deliver locally sustainable, quality health solutions to women, children, and their communities.
- 0454 **ECHO** | 239-567-3327 | www.echonet.org | Fights world hunger by helping people help themselves. Provides training, information, and seeds to development workers, missionaries, and small-scale farmers working in 190+ countries.
- 0464 **Episcopal Relief & Development** | 855-312-4325 | www.episcopalrelief.org | Advancing lasting change in communities impacted by injustice, poverty, disaster and climate change focusing on early childhood development, women and girls, climate resilience & disaster response.
- 0401 **Feed My Starving Children** | 763-504-2919 | www.fmcs.org | Volunteers hand pack scientifically formulated meals for undernourished children, which are distributed to a network of 70+ partners in 60+ countries each.
- 0455 **FINCA International, Inc.** | 202-682-1510 | www.finca.org | To alleviate poverty through lasting solutions that help people build assets, create jobs and raise their standard of living.
- 0482 **Food For The Poor** | 954-427-2222 | www.foodforthe poor.org | Founded in 1982, we are one of the largest international relief and development organizations in the United States, serving the poorest of poor.
- 0484 **Free the Slaves** | 202-580-7660 | www.freetheslaves.net | We change the conditions that allow modern slavery to exist through community-based action. We work with local partners to provide liberation, education, and restoration.
- 0452 **Global Partners in Care** | 574-367-2455 | www.globalpartnersincare.org | Improving access to hospice and palliative care worldwide where the need is great and resources are few through collaborative partnerships between US and international organizations.
- 0431 **Heifer International** | 855-948-6437 | www.heifer.org | Our mission is to end hunger while caring for the Earth. Heifer provides appropriate livestock, training and related services to small-scale farmers in communities worldwide.
- 0408 **Helen Keller International** | 646-472-0349 | www.helenkellerintl.org | Partners with communities that are striving to overcome longstanding cycles of poverty. Delivers the essential building blocks of good health, sound nutrition and clear vision.
- 0418 **HIAS** | 301-844-7300 | www.hias.org | For over 100 years, this organization has been helping refugees rebuild their lives in safety and freedom.
- 0478 **Hope for Haiti** | 239-434-7183 | www.hopeforhaiti.com | With experience running poverty alleviation programs since 1989, the organization works to improve the quality of life for the Haitian people, particularly women and children.
- 0437 **Human Rights Watch** | 212-377-9479 | www.hrw.org | Human Rights Watch defends the rights of people worldwide. We investigate abuses, expose facts, and pressure those with power to respect rights and secure justice.
- 0405 **Humanity & Inclusion (Handicap International)** | 301-891-2138 | www.hi-us.org | Co-winner of the Nobel Peace Prize, we support persons with disabilities and people in situations of conflict, natural disaster, and poverty in 60 countries.
- 0465 **International Medical Corps** | 800-481-4462 | www.internationalmedicalcorps.org | Global humanitarian organization saving lives and building self-reliance by providing vital medical care; training healthcare providers; rebuilding clinics; and improving water & sanitation.
- 0407 **International Orthodox Christian Charities** | 667-401-2160 | www.iocc.org | IOCC offers emergency relief and development programs to people in need worldwide, meeting practical needs in the spirit of Christ's love.
- 0429 **International Relief Teams** | 619-284-7979 | www.irteams.org | Alleviates human suffering by providing health services and other assistance to victims of disaster, poverty and neglect, in the United States and around the world.
- 0447 **International Rescue Committee, Inc.** | 855-973-7283 | www.rescue.org | Helping people whose lives and livelihoods are shattered by conflict and disaster, including the climate crisis, to survive, recover and regain control of their future.
- 0479 **Islamic Relief USA** | 855-447-1001 | www.irusa.org | Provides relief and development in a dignified manner regardless of gender, race, or religion, and works to empower individuals in their communities.

NEW JERSEY EMPLOYEES CHARITABLE CAMPAIGN

- 0422 **MAP International** | 800-225-8550 | www.map.org | Answering the call to provide health and healing to a world in need, MAP International provides medicine and health supplies to people across the world.
- 0424 **Medical Teams International** | 503-624-1000 | www.medicalteams.org | Daring to love like Jesus, we boldly break barriers to health and restore wholeness in a hurting world.
- 0428 **Mercy Corps** | 888-842-0842 | www.mercycorps.org | Mercy Corps is a global team of humanitarians, working together on the front lines of today's biggest crises to create a future of possibility, where everyone can prosper. Our mission is to alleviate suffering, poverty and oppression by helping people build secure, productive and just communities.
- 0414 **Operation Smile** | 888-677-6453 | www.operationsmile.org | Operation Smile is a global nonprofit that provides expert cleft surgery and care to change lives and give hope where it's needed most.
- 0413 **Oxfam America** | 800-776-9326 | www.oxfamamerica.org | Global organization working to end the injustice of poverty and injustice.
- 0471 **Partners In Health** | 857-880-5600 | www.pih.org | Our mission is to provide a preferential option for the poor in health care.
- 0410 **Plan International USA** | 800-556-7918 | www.planusa.org | We are a global girls' rights organization. We partner with adolescent girls, children and young women to overcome oppression and gender inequality.
- 0427 **Prison Fellowship International** | 703-481-0000 | www.pfi.org | We transform the lives of prisoners, their families, and victims through a global network of ministry partners.
- 0416 **Project HOPE** | 844-349-0188 | www.projecthope.org | Placing power in the hands of local health care workers to save lives across the globe.
- 0432 **Rise Against Hunger** | 919-839-0689 | www.riseagainsthunger.org | Growing a global movement to end hunger by empowering communities, nourishing lives, and responding to emergencies.
- 0417 **Save the Children** | 800-728-3843 | www.savethechildren.org | Save the Children does whatever it takes – every day and in times of crisis – transforming children's lives and the future we share.
- 0430 **SEE International** | 877-937-3133 | www.seeintl.org | Provides eyecare services to break the cycle of hardship that preventable blindness causes, making patients, families, and communities healthier and stronger.
- 0426 **The Salvation Army World Service Office (SAWSO)** | 800-725-2769 | www.sawso.org | We represent the interests of The Salvation Army U.S.A. Territories who work to improve health, economic and spiritual conditions of the vulnerable throughout the world.
- 0419 **UNICEF USA** | 800-367-5437 | www.unicefusa.org | Our mission is to relentlessly pursue a more equitable world for every child. UNICEF won't stop until every child is healthy, educated, protected and respected.
- 0450 **Unitarian Universalist Service Committee** | 800-766-5236 | www.uusc.org | UUSC advances human rights and social justice around the world, partnering with those who confront unjust power structures and mobilizing to challenge oppressive policies.
- 0475 **United Methodist Committee on Relief (UMCOR)** | 800-862-4246 | www.umcmmission.org/umcor | UMCOR is the global humanitarian aid and development agency of The United Methodist Church, working in over 80 countries.
- 0460 **Water For People** | 720-488-4590 | www.waterforpeople.org | We exist to promote the development of high-quality drinking water and sanitation services, accessible to all, and sustained by strong communities, businesses, and governments.
- 0462 **Women for Women International** | 202-737-7705 | www.womenforwomen.org | Women for Women International invests where inequality is greatest by helping women who are forgotten — the women survivors of war and conflict.
- 0433 **World Bicycle Relief** | 312-664-3836 | www.worldbicyclerelief.org | Through the Power of Bicycles, we envision a world where distance is no longer a barrier to education, healthcare and economic opportunity.
- 0480 **World Food Program USA** | 202-627-3939 | www.wfpusa.org | To inspire and mobilize people in the United States to support the mission of the U.N. World Food Programme to end hunger.
- 0439 **World Relief Corp of the Natl Assn of Evangelicals** | 800-535-5433 | www.worldrelief.org | At World Relief our mission is to empower the local church to serve the most vulnerable.
- 0425 **World Renew** | 800-552-7972 | www.worldrenew.net | We join the world's families to change hunger, poverty, and injustice through locally originated community development programs and internationally coordinated disaster response.

0421 **World Vision** | 866-859-5437 | www.worldvision.org | Relief and development organization helping children worldwide by tackling causes of poverty and developing access to clean water, food, health care, education and economic opportunity.

EarthShare New Jersey

3300 **EarthShare New Jersey, Inc.** | 609-989-1160 | www.earthsharenj.org | Mobilize the people of NJ to protect our air, water, land and wildlife for a cleaner, healthier and safer place to live, work and play.

3912 **American Bird Conservancy** | 540-253-5780 | www.abcbirds.org | Protecting native wild birds and their habitats throughout the Americas, through reserve creation, habitat restoration, and threat reduction, leading public/private conservation partnerships to get results.

3917 **American Farmland Trust** | 202-331-7300 | www.farmland.org | Stopping the loss of farmland to sprawling development. Working with communities on smarter growth that includes local family farms. Advocating environmentally healthy farming practices.

3350 **American Forests** | 202-737-1944 | www.americanforests.org | American Forests creates healthy and resilient forests, from cities to wilderness, that deliver essential benefits for climate, people, water and wildlife.

3918 **American Littoral Society** | 732-291-0055 | www.littoralsociety.org | We protect and preserve marine life and habitat, defend the coast from harm and empower others to do the same through advocacy, education and conservation.

3342 **Beyond Pesticides** | 202-543-5450 | www.beyondpesticides.org | Working to protect health and the environment, including air, water, land and food, to lead the transition to a world free of toxic pesticides.

3924 **Born Free** | 301-448-1407 | www.bornfreeusa.org | Works to end the suffering of wild animals in captivity, rescue individual animals in need, protect wildlife, including endangered species, and encourage compassionate conservation globally.

3930 **CERES** | 617-247-0700 | www.ceres.org | Ceres is a nonprofit organization transforming the economy to build a just and sustainable future for people and the planet.

3905 **Clean Water Fund** | 202-895-0420 | www.cleanwaterfund.org | Neighborhood-based action and education programs bringing people, businesses and government together for sensible solutions that protect water and health, prevent pollution, and conserve natural resources.

3324 **Comite De Apoyo A Los Trabajadores Agricolas (Cata)** | 856-881-2507 | www.cata-farmworkers.org | Organization empowering the migrant community since 1979. Migrant farmworkers and low-wage workers work alongside supporters and other organizations, advocating for social, economic and environmental justice.

3916 **Conservation International** | 703-341-2400 | www.conservation.org | Building upon a strong foundation of science, partnership and field demonstration, Conservation International empowers societies to responsibly care for nature for the well-being of humanity.

3340 **Conserve Wildlife Foundation of NJ** | 609-250-7964 | www.conservewildlifenj.org | Works to protect New Jersey's rare and imperiled wildlife and the habitats they depend on through field research, habitat restoration, environmental education, and community engagement.

3331 **Defenders of Wildlife** | 202-682-9400 | www.defenders.org | Working since 1947 to save America's endangered animals and threatened habitats for future generations' benefit through public education, citizen advocacy, legal action and scientific research.

3922 **Delaware Riverkeeper Network** | 215-369-1188 | www.delawareriverkeeper.org | We work throughout the Delaware River Watershed on the issues, actions legislation, policies and decisions that impact the health of our waterways and communities.

3330 **Flat Rock Brook Nature Association** | 201-567-1265 | www.flatrockbrook.org | A 150 acre preserve and education center maintained as a natural environment available to the public for trail walks, nature study and other passive recreation.

3397 **Friends Of Liberty State Park** | 201-792-1993 | www.folsp.org | Our mission is to preserve, protect, conserve, and promote Liberty State Park, the urban waterfront open space state park behind Lady Liberty and Ellis Island.

3925 **Friends of NJ School of Conservation** | 973-948-4646 | www.friendsofnjsoc.org/ | The New Jersey School of Conservation provides outdoor environmental education to students, teachers and researchers. Under new management, we are renovating and expanding our programs

3310 **Greater Newark Conservancy** | 973-642-4646 | www.citybloom.org | Fostering collaboration at the intersection of environmental, food, and racial justice. Working to reverse the history of systemic racism to improve social determinants of health.

3908 **Hackensack Riverkeeper** | 201-968-0808 | www.hackensackriverkeeper.org | Promotes clean water, open space and conservation in the Hackensack River Watershed and Newark Bay Complex through Advocacy, Education, Action and Enforcement.

3902 **Isles, Inc.** | 609-341-4700 | www.isles.org | Community development organization that helps urban residents learn about and value the environment through hands-on improvements and education projects in schools, parks and neighborhoods.

3306 **Izaak Walton League of America** | 301-548-0150 | www.iwla.org | From hunters to hikers, our members protect America's outdoors through community-based conservation education, common-sense public policy, and a commitment to strong outdoor ethics.

3926 **Lake Hopatcong Foundation** | 973-663-2500 | www.lakehopatcongfoundation.org/ | Dedicated to protecting the environment and enhancing the experience on and around New Jersey's largest lake, for this and future generations.

NEW JERSEY EMPLOYEES CHARITABLE CAMPAIGN

- 3302 **Monmouth Conservation Foundation** | 732-671-7000 | www.monmouthconservation.org | A countywide land trust that has been preserving farms, open space, and protecting the natural resources and environment of Monmouth County for 43 years.
- 3931 **Musconetcong Watershed Association** | 908-537-7060 | www.musconetcong.org | An independent, non-profit organization dedicated to protecting and improving the quality of the Musconetcong Watershed and its waters for people and nature.
- 3932 **National Audubon Society** | 212-979-3196 | www.audubon.org | The mission of the National Audubon Society is to protect birds and the places they live, today and tomorrow.
- 3352 **National Parks Conservation Association** | 202-223-6722 | www.npca.org | Preserves national parks from the Grand Canyon to Gettysburg; protects endangered wildlife and cultural sites; promotes new parks; defends against pollution, inappropriate development and overcrowding.
- 3901 **National Wildlife Federation** | 703-438-6000 | www.nwf.org | Uniting all Americans to ensure wildlife thrive in a rapidly changing world.
- 3329 **Natural Resources Defense Council** | 212-727-2700 | www.nrdc.org | NRDC works to safeguard the earth - its people, its plants and animals, and the natural systems on which all life depends.
- 3303 **Nature Conservancy, The** | 703-841-5300 | www.nature.org | The mission of The Nature Conservancy is to conserve the lands and waters on which all life depends.
- 3907 **New Jersey Audubon Society** | 908-204-8998 | www.njaudubon.org | Preserving at-risk wildlife and natural lands since 1897, through science-based research, habitat stewardship, educational engagement, and conservation advocacy, while fostering environmental awareness focused on sustainability.
- 3341 **New Jersey Conservation Foundation** | 908-234-1225 | www.njconservation.org | Since 1960, we have protected New Jersey's land, water, natural resources and wildlife habitat for the benefit of all through advocacy, preservation, stewardship and education.
- 3399 **Ocean Conservancy** | 202-429-5609 | www.oceanconservancy.org | Ocean Conservancy informs, inspires and empowers citizens to take action on behalf of the ocean.
- 3933 **Oceana** | 202-833-3900 | www.oceana.org | Oceana is the largest international advocacy organization dedicated solely to ocean conservation.
- 3347 **Peregrine Fund, The** | 208-362-3716 | www.peregrinefund.org | Saves eagles, condors, falcons, and other endangered birds through research, breeding, and conservation programs. Helps preserve habitats. Educates children and adults about nature and science.
- 3904 **Pinelands Preservation Alliance** | 609-859-8860 | www.pinelandsalliance.org | Protecting 1-million acres of forests, wetlands, fields and streams that make up the Pinelands National Reserve through education, advocacy and grassroots organizing.
- 3934 **Rodale Institute** | 610-683-1400 | www.rodaleinstitute.org | Rodale Institute is dedicated to growing the regenerative organic agriculture movement through rigorous research, farmer training, and education.
- 3344 **Save Barnegat Bay** | 732-830-3600 | www.savebarnegatbay.org | Restoring and protecting Barnegat Bay and its ecosystem by being a strong and independent voice throughout the watershed including Ocean and Monmouth Counties.
- 3915 **Scenic America** | 202-792-1300 | www.scenic.org | Scenic America is the only national nonprofit that helps citizens safeguard the scenic qualities of America's roadways, countryside and communities.
- 3349 **Sierra Club Foundation, The** | 415-995-1780 | www.sierraclubfoundation.org | Promotes climate solutions, conservation, and movement building through a powerful combination of strategic philanthropy and grassroots advocacy.
- 3928 **SPLASH: Delaware River Floating Classroom** | 609-483-5220 | www.splashclassroom.org/ | Educate and inspire through accessible aquatic-based experiential learning and citizen science on the Delaware River and its shores
- 3910 **Surfrider Foundation** | 949-492-8170 | www.surfrider.org | Protects and preserves the world's ocean, waves and beaches, through a powerful activist network. Activities include: water quality monitoring, grassroots activism and plastic pollution prevention.
- 3935 **Sustainable Jersey** | 609-771-2831 | www.sustainablejersey.com | Providing municipalities and schools with the tools, training, and incentives to pursue vital sustainability initiatives to build a better world for future generations.
- 3919 **Teaneck Creek Conservancy** | 201-836-2403 | www.teaneckcreek.org | Member-supported, nonprofit organization dedicated to developing community activism, environmental education, celebrating culture and arts, and carrying on the historical legacy of our watershed.
- 3301 **Union of Concerned Scientists** | 617-547-5552 | www.ucsusa.org | Scientists and activists putting independent science to work to combat global warming, reduce nuclear proliferation, promote renewable energy, and make healthy food available for all.
- 3351 **Wetlands Institute, The** | 609-368-1211 | www.wetlandsinstitute.org | Promoting appreciation, understanding and stewardship of wetlands and coastal ecosystems through our programs in research, conservation, and education for more than 50 years.
- 3328 **Woodford Cedar Run Wildlife Refuge** | 856-983-3329 | www.cedarrun.org | Woodford Cedar Run Wildlife Refuge (Cedar Run) is a 501(c)(3) non-profit organization dedicated to the preservation of New Jersey's wildlife and habitats through education, conservation, and rehabilitation.

3322 **World Wildlife Fund** | 202-293-4800 | www.worldwildlife.org | Global conservation organization striving to create harmony between people and nature by combating climate change, protecting endangered species, preserving wild habitats, and transforming market forces.

3929 **Xerces Society** | 855-232-6639 | www.xerces.org | The Xerces Society for Invertebrate Conservation is an international nonprofit organization that protects the natural world through the conservation of invertebrates and their habitats.

America's Best Charities

3400 **America's Best Charities** | 800 477-0733 | www.best-charities.org | Feeding the hungry. Sheltering the homeless. Protecting the children. And healing the sick. America's finest independent charities. Working with you to share- the American way.

7050 **Abandoned Children's Fund** | 888 884-0567 | www.abandonedchildrensfund.org | Thousands of innocent orphans, cruelly abandoned: alone, hungry, desperate, terrified victims of disease, war, extreme poverty. Please help us house, feed, love and rehabilitate them.

5006 **Abortion Federation, National (NAF)** | 202 667-5881 | www.prochoice.org | Help protect abortion providers from anti-abortion threats, intimidation, violence, and criminal activities so women can access the safe, high-quality care they need.

7051 **Abused Children's Fund, Inc.** | 707 483-2939 | www.abusedchildrensfund.org | Thousands of innocent children are tragically hurt every day by emotional, physical and sexual abuse. Help protect and restore through prevention, rehabilitation and God's love.

3451 **Adoptions by Cradle of Hope** | 301 587-4400 | www.cradlehope.org | Help an abandoned child! We provide adoption services and support to children who need permanent, loving families. Every dollar saves children's lives and provides love!

7163 **After a Child Dies - The Compassionate Friends** | 877 969-0010 | www.compassionatefriends.org | A child's death is devastating. Parents are inconsolable. Siblings experience a rollercoaster of emotions. We provide highly personal comfort, hope and support to help families grieve, cope and heal.

3504 **Aid For Starving Children** | 800 514-3499 | www.aidforstarvingchildren.org | One child dying of hunger every twelve seconds- over 7,000 a day- must stop! Make a difference. Your actions can help save a child!

7100 **Aid for Trash Dump Children: The Unforgotten** | 443 668-2648 | www.unforgotten.org | Save hungry children and their mothers from eating trash and living in garbage

dumps. Give them clean food and water, shelter, schooling and a future.

7002 **AIDS Children's Foundation** | 888 683-8323 | www.AFCAids.org | HIV+ children don't have to die. Help us provide life-saving medicine, medical equipment, nutritional supplements, livestock, seeds, and hope to children affected by AIDS.

3406 **Air & Space Forces Association** | 800 727-3337 | www.afa.org | Join the Force behind the Force to promote a dominate US Air Force and support Air Force families through professional development, scholarships, and other programs.

3439 **Alex's Lemonade Stand Foundation for Childhood Cancer** | 866 333-1213 | www.AlexsLemonade.org | A four-year-old cancer patient's frontyard lemonade stand evolved to a nationwide movement to find a cure for pediatric cancer. Every person can make a difference.

3418 **Alley Cat Allies** | 240 482-1980 | www.alleycat.org | Every 15 seconds a healthy cat is killed in a shelter. Our programs help shelters save more cats and kittens, but we need your help.

4446 **Alley Cat Rescue** | 301 277-5595 | www.saveacat.org | Stray, abandoned and feral cats are neglected. Healthy cats in shelters are killed. Your contribution helps us end feline overpopulation and suffering.

4440 **Alopecia Areata Foundation National** | 415 472-3780 | www.naaf.org | Provides major research funding, patient educational materials and support for alopecia areata, a mystifying autoimmune disease affecting all ages, causing one's hair to fall out.

4421 **Alzheimer's Foundation of America** | 866 232-8484 | www.alzfdn.org | Providing programs and services, including caregiver counseling and support from licensed social workers, educational materials, professional training and funding for research.

5008 **Alzheimer's Research and Prevention Foundation** | 888 908-5766 | www.AlzheimersPrevention.org | Help fight Alzheimer's disease and find a cure through research and prevention! Committed to ensuring peak mental performance and optimum brain function throughout our lives.

3411 **Alzheimer's Research Foundation, Fisher Center** | 800 ALZ-INFO | www.ALZinfo.org | Unique research into cause, care and cure of Alzheimer's by Nobel Prize winner. Donate to change lives. Bring a cure to 5.4 million Americans.

NEW JERSEY EMPLOYEES CHARITABLE CAMPAIGN

- 5012 **America's VetDogs - the Veteran's K-9 Corps, Inc.** | 866 838-3647 | www.VetDogs.org | Trains and places guide, service, hearing and PTSD dogs. Transforming lives of disabled veterans, active servicemembers and first responders so they can live without boundaries.
- 3401 **American Association for Cancer Research** | 866 423-3965 | www.aacrfoundation.org | We fund groundbreaking scientific cancer research that saves lives. By contributing, you can help speed up the pace of scientific discovery, and fight cancer.
- 7164 **American Association of Kidney Patients, Inc.** | 800 749-2257 | www.aakp.org | Dedicated to improving the lives of kidney patients and their families through education advocacy and the fostering of patient communities.
- 3564 **American Battlefield Trust** | 800 CW-TRUST | www.CivilWar.org | Manassas, Gettysburg, Antietam, Fredericksburg: Don't let developers pave over our nation's past. If we don't save America's battlefields now, we risk losing them forever!
- 3409 **American Breast Cancer Foundation** | 410 730-5105 | www.abcf.org | The national non-profit organization, providing uninsured and underserved individuals financial assistance to aid in the early diagnosis, treatment and survival of breast cancer.
- 3452 **American Humane Association** | 866 242-1877 | www.americanhumane.org | Protecting millions of children and animals from abuse, neglect and abandonment for 135 years. We lead understanding of the human-animal bond. The abuse must stop!
- 4423 **American Indian College Fund** | 303 426-8900 | www.collegefund.org | Native Americans account for only 1% of college students. Help us change this statistic through scholarships/program support. Let's re-imagine what's possible for our students.
- 4412 **American Indian Youth Running Strong** | 888 491-9859 | www.indian-youth.org | Raising standard of living, self-esteem of Native American children. Providing relief, development to Indian Reservations. Teaching traditional life skills, healthy lifestyles, respect for Mother Earth.
- 3417 **American Institute for Cancer Research** | 800 843-8114 | www.aicr.org | Replacing cancer myths with cancer facts. We're funding innovative research and education to expand understanding of nutrition and cancer. CFC contributions used for research purposes.
- 7165 **American Kennel Club Canine Health Foundation** | 888-682-9696 | www.akcchf.org | Dedicated to advancing the health of all dogs and their owners by funding scientific research and supporting the dissemination of health information.
- 7166 **American Whitewater** | 828 586-1930 | www.americanwhitewater.org | Save rivers! Support American Whitewater and national river stewardship, recognized as leaders in river management and restoring rivers impacted by dams.
- 4417 **Americans Helping Americans** | 888 242-5026 | www.helping-americans.org | Fighting American poverty by aiding needy Appalachian and urban Americans; providing low-income families, elderly, and veterans with basic relief, educational support and affordable housing.
- 7157 **Angel Canines and Wounded Warriors** | 888-675-1405 | www.mercymedical.org | Ensuring Americans living in poverty or rural areas, who lack monetary means, are able to travel to distant medical specialists for life-saving care and treatment.
- 7167 **Animal Crisis Care** | 800 440-3277 | www.redrover.org | Animal victims of cruelty, severe neglect and devastating disasters need our help. Together, we can give animals the lifesaving emergency care they deserve.
- 4506 **Animal League America** | 516 883-7900 | www.AnimalLeague.org | Support the largest no-kill animal rescue and adoption organization in the world. We save the lives of pets through rescue, adoption, spay/neuter, education initiatives.
- 7009 **Animal Legal Defense Fund** | 707 795-2533 | www.aldf.org | Animals need love - and lawyers! Unimaginable acts of cruelty must end. In courtrooms across America, ALDF is winning the case against cruelty!
- 3453 **Anxiety and Depression Association of America** | 240 485-1001 | www.adaa.org | Anxiety disorders, depression, OCD, and PTSD, are real, serious, and treatable. We champion research for a cure and offer educational resources to millions suffering silently.
- 3413 **Appalachian Trail Conservancy** | 304 535-6331 | www.appalachiantrail.org | Preserve and manage this amazing nature trail. Ensuring that its priceless cultural heritage can be shared and enjoyed today, tomorrow, and for centuries to come.
- 3448 **Apraxia Kids** | 412 343-7102 | www.apraxia-kids.org | Every child deserves a voice. We're improving the lives of children with apraxia by ensuring each child has their best opportunity to develop speech.
- 7168 **Arthritis National Research Foundation** | 800 588-2873 | www.curearthritis.org | We fund research to cure arthritis and develop new treatments for millions of Americans, including 300,000 children, suffering in pain every day.

NEW JERSEY EMPLOYEES CHARITABLE CAMPAIGN

- 3441 **Asian Children's Rescue & Relief Fund** | 866 523-3133 | www.AsianChildrensAssist.org | Saving Asian abandoned, orphaned, destitute, and handicapped children by providing hope and opportunity. Reaching their full potential through basic care, corrective surgery, therapy, and training.
- 3541 **ASPCA: American Society for the Prevention of Cruelty to Animals** | 212 876-7700 | www.aspc.org | Staged dog fights to the death. Puppy factories with overcrowded and unsanitary breeding pens. Kittens tortured for amusement. Help stop these acts of animal cruelty.
- 4426 **Autism Intervention and Treatment Research -- Organization for Autism Research** | 866 366-9710 | www.researchautism.org | Parents of children with autism never stop seeking answers. We're here to provide those answers by funding research that provides practical information on lifelong care.
- 3485 **Autism Society of America** | 800 3-AUTISM | www.autism-society.org | 1 in 68 children diagnosed with autism--that's nearly 50,000 new families just this year. Help us provide support to those living with autism today.
- 7169 **Autoimmune Association** | 888-856-9433 | www.autoimmune.org | Leading in advocacy, awareness, education and research for 100+ autoimmune diseases including rheumatoid arthritis, lupus, Graves', celiac, hashimoto's, psoriasis, Sjogren's, scleroderma and Crohn's disease.
- 3562 **Bible Believers Fellowship, Inc.** | 516 739-7746 | www.prisonministry.org | Jesus Christ Saves Lives! Help our prison ministry reduce crime by promoting Christianity to English and Spanish speaking inmates with literature, videos, counseling, and prayer.
- 7170 **Big Brothers Big Sisters of America** | 813-720-8778 | www.bbbs.org/ | Big Brothers Big Sisters empowers youth to realize their potential through 1:1 mentorship to build their BIG futures, strengthening communities. Join our mentorship movement today!
- 7106 **Big Cat Rescue Corp** | 813 920-4130 | www.bigcatrescue.org | Tigers confined to circus wagons. Lions bred for photos then to be shot in cages. Lynx farmed for their fur. Help us save big cats.
- 7171 **Bladder Cancer Advocacy Network** | 888-901-BCAN | www.bcan.org | BCAN was founded in 2005 and is the only national advocacy organization devoted to advancing bladder cancer research and supporting those impacted by the disease.
- 7172 **Boone and Crockett Club** | 406 542-1888 | www.boone-crockett.org | Upholding Theodore Roosevelt's vision, we're protecting our nation's most valuable resource - its wildlife. We've been promoting fair-chase in hunting, outdoor ethics and conservation since 1888.
- 7173 **Born This Way Foundation** | 510 499-9595 | www.bornthisway.foundation | Founded by Lady Gaga, BTWF focuses on modeling healthy conversations about mental health, connecting young people with resources/services, and building kinder and braver communities.
- 3431 **Boulder Crest Foundation** | 540 554-2727 | www.bouldercrestretreat.org | Healing combat heroes by delivering free retreats for wounded warriors, their families, caregivers and Gold Star families with PTSD/TBI in a beautiful rural sanctuary.
- 3414 **Brain Injury Association of America** | 703 761-0750 | www.BIAUSA.org | Brain injury happens anytime, to anyone, anywhere. We provide help, hope, healing for millions of Americans who live with often misdiagnosed and misunderstood brain injury.
- 3407 **Brain Tumor Association, American (ABTA)** | 800 886-2282 | www.abta.org | Advancing the understanding and treatment of brain tumors with the goals of improving, extending, and saving the lives of those impacted by brain tumor diagnoses.
- 7057 **Bread and Water for Africa, Inc.** | 888 371-6622 | www.african-relief.org | Strengthening African initiatives for self-sufficiency through grassroots health, clean water, education, orphanages, vocational training, agriculture, and micro-credit programs focusing on women and children.
- 3444 **Breast Cancer Action** | 877 2-STOP-BC | www.bcaction.org | BCAction is the watchdog of the breast cancer movement. We work to achieve health justice for women at risk of and living with breast cancer.
- 7012 **Breast Cancer African American, Sisters Network Inc.** | 866 781-1808 | www.sistersnetworkinc.org | Speaking with one voice, we save lives by empowering women through support, education, financial assistance and promoting early detection through free mammography and ultrasound screenings.
- 3475 **Brother's Brother Foundation** | 412 321-3160 | www.brothersbrother.org | Connecting People's Resources with People's Needs: 58 Years, 149 Countries, \$4 billion in books, food, medical supplies, pharmaceuticals. Forbes Magazine "1st in efficiency."

NEW JERSEY EMPLOYEES CHARITABLE CAMPAIGN

- 7129 **Can Do Multiple Sclerosis** | 800 367-3101 | www.msando.org | I AM. I CAN. I WILL!™ Your donation transforms, empowers and provides families living with multiple sclerosis to be more than their MS.
- 3528 **Cancer Care, Inc.** | 800 813-HOPE | www.cancercare.org | Caring for people facing cancer. Supporting patients, children, loved ones, caregivers. We provide help and hope through free counseling, wigs, education, financial assistance.
- 3596 **Cancer Research America - NFCR** | 800 321-CURE | www.NFCR.org | If you agree that world-class, cutting-edge research is the key to more effective cancer treatments, prevention, and detection - join us now - save lives!
- 3458 **Cancer Research Fund of the Damon Runyon - Walter Winchell Foundation** | 877 7CANCER | www.damonrunyon.org | To accelerate breakthroughs, we provide today's best young scientists with funding to pursue innovative cancer research. 100% of your donation funds cancer research.
- 3420 **Canine Assistants** | 800 771-7221 | www.canineassistants.org | Teaching great dogs for special people. Invest in freedom by providing service dogs to children and adults with disabilities. Thank you!
- 3412 **Canine Companions for Independence** | 800 572-BARK (2275) | www.cci.org | A cold nose and a warm heart! Our companion dogs provide independence, assistance and friendship that transforms the lives of children and adults with disabilities.
- 4429 **Canines for Disabled Kids** | 978 422-5299 | www.caninesforkids.org | Autism silences a child's laugh. Disability halts a child's life. These specially trained service dogs liberate children, promote independence and social awareness, and help families.
- 7174 **Carry The Load** | 214-789-0763 | www.carrytheload.org | Carry The Load is dedicated to honoring and celebrating the sacrifices made by our nation's heroes.
- 4430 **Carter Center** | 800 550-3560 | www.cartercenter.org | Waging Peace. Fighting Disease. Building Hope. Led by former President Jimmy Carter and Rosalynn Carter, the Center advances human rights and alleviates unnecessary human suffering.
- 7175 **Catholic Legal Immigration Network, Inc.** | 301-565-4800 | www.cliniclegal.org | CLINIC and its 270+ affiliates assist low-income immigrants, reunite families, promote citizenship, help victims of domestic violence, advocate, build capacity, and train legal immigration providers.
- 4483 **Catholic Relief Services - USCCB** | 888 277-7575 | www.crs.org | Rushes food, clothing, shelter, water and comfort to God's most vulnerable children effectively and efficiently in times of disaster and provides the means to self-sufficiency.
- 4484 **Center for Reproductive Rights** | 917 637-3600 | www.reproductiverights.org | Promote and defend women's reproductive freedom and health. We use the law in the U.S. and globally to ensure women's dignity, equality, and self-determination.
- 7035 **Certified Humane** | 703 435-3883 | www.certifiedhumane.org | Dairy cows confined in tie stalls, crated pigs can't root or move, chickens stuffed in cages. Fight cruelty in raising and handling of animals.
- 4485 **CHADD (Children & Adults with Attention-Deficit/Hyperactivity Disorder)** | 301 306-7070 | www.chadd.org | CHADD is the leading national voice providing evidence-based information and resources on ADHD. CHADD receives over 3 million inquiries from parents and adults seeking support.
- 7016 **Chesapeake Bay Foundation, Inc.** | 888 728-3229 | www.cbf.org | America's waters and marine life face toxic pollution, overfishing, urban sprawl. Help realize our vision: safe drinking water, pristine waterways, thriving ecosystems locally and nationwide.
- 3521 **Child Find of America** | 800 I-AM-LOST | www.childfindofamerica.org | Child kidnapping prevention and location specialists, helping children and devastated parents through free investigation, mediation and publicity. Your gift could bring a missing child home.
- 4486 **Child Foundation** | 503 224-0409 | www.childfoundation.org | Save lives, build hope. Education can move a child beyond poverty. Help children remain in school, giving them the tools to reach their full potential.
- 3472 **Child Rescue International** | 800 245-9191 | www.mwb.org | Children abandoned, orphaned, hungry, lost and lonely, living in bleak institutions need hope and love. Your support helps us save and change their lives!
- 7060 **Child Slavery, Trafficking and Forced Labor Rescue** | 202 234-9050 | www.GoodWeave.org | Devoted to the rescue of trafficked and exploited child laborers from carpet looms in Asia, and offering them rehabilitation, counseling, education and a home.
- 7176 **Childhelp®** | 480-922-8212 | www.childhelp.org | Five children die every day from child abuse and neglect. Help bring this number from five to zero; support Childhelp's intervention, treatment and prevention programs.

NEW JERSEY EMPLOYEES CHARITABLE CAMPAIGN

- 3478 **Childhood Brain Tumor Foundation** | 877 217-4166 | www.childhoodbraintumor.org | Where would you turn if your child had a critical brain tumor? We're determined to find a cure and offer hope to parents facing heartbreak.
- 3466 **Childhood Cancer Research for a Cure** | 888 899-BALD | www.StBaldricks.org | Worldwide, a child is diagnosed every 3 minutes. Funding research is a child's best hope for a cure. Help us save lives.
- 7177 **Children of Addiction (NACoA)** | 301-468-0985 | www.nacoa.org | Those most hurt by alcohol and drugs don't even use them! With support, we can transform these children at risk into children of promise.
- 7178 **Children of Fallen Patriots Foundation** | 866 917-2373 | www.fallenpatriots.org | Our mission is to provide college scholarships and educational counseling to children of fallen U.S. service members, making the ultimate sacrifice for freedom.
- 3421 **Children of the Night** | 800 551-1300 | www.childrenofthenight.org | Rescues America's children from the ravages of prostitution. Providing shelter, hope and new-beginnings. With your support, we can save more. Our children deserve a fighting-chance!
- 7179 **Children's House at the Johns Hopkins Hospital** | 410 614-2560 | www.believeintomorrow.org | Provides a warm "home away from home" for families in the midst of a medical crisis so their critically ill children may focus on healing.
- 7019 **Children's Hunger Fund** | 800 708-7589 | www.childrenshungerfund.org | Feeding the hungry at home and abroad. Food, clothing and medicines aid children in impoverished countries and in America's inner-cities.
- 7180 **Children's Hunger Relief Fund** | 707 528-8000 | www.chrf.org | Millions of innocent children needlessly die before age five! Help us provide millions of meals, healthcare, clean water, housing, education, God's love and stop starvation.
- 4410 **Children's Organ Transplant Association** | 800 366-2682 | www.cota.org | COTA gives hope to children and young adults who need a life-saving organ transplant by providing fundraising assistance and family support.
- 4454 **Christian Freedom International, Inc.** | 800 323-CARE | www.christianfreedom.org | Help persecuted, repressed, isolated Christians who are suffering for their Faith! We deliver medicine, food, education, Bibles; and report on atrocities occurring world-wide.
- 4413 **Christian Relief Services** | 800 33-RELIEF | www.christian-relief.org | Help wipe out poverty and hunger in the USA, including Indian Reservations, Appalachia and overseas, by providing food, water, medicine, education, shelter to children/families.
- 3474 **Concerns of Police Survivors, Inc. (COPS)** | 573 346-4911 | www.nationalcops.org | Grief support and resources for surviving families and co-workers of law enforcement officers killed in the line of duty; law enforcement trauma training; public education.
- 7153 **Coral Reef Alliance** | 888-267.2573 | www.coral.org | 70% of corals are threatened or gone. The Coral Reef Alliance partners with local communities to save coral reefs and sustain efforts so corals flourish.
- 7154 **Cornelia de Lange Syndrome Foundation** | 800-753-2357 | www.CdLSusa.org | Children born with physical, cognitive and medical challenges. Parents need information, comfort and support. Help us provide free publications, guidance, emotional support and awareness.
- 4457 **Correctional Peace Officers Foundation** | 800 800-2763 | www.cpodf.org | Nonprofit charity for Correctional Officers and their families, by providing line-of-duty death benefit, and catastrophic assistance in cases of accident or illness.
- 3566 **Covenant House** | 800 388-3888 | www.covenanthouse.org | Give homeless teens a future! We shelter, mentor and job train kids with nowhere else to turn. Fifteen shelters - 60,000 teens yearly need help.
- 7062 **Cure Alzheimer's Fund** | 781 237-3800 | www.curealz.org | Research is the only path to progress. We're funding breakthrough, aggressive research to prevent, slow, reverse and ultimately find a cure for Alzheimer's Disease.
- 3429 **Days End Farm Horse Rescue** | 301 854-5037 | www.defhr.org | Starvation, parasite infestation, deformed hoofs. Caring for abused and neglected horses. Dedicated to ensuring quality care and treatment of horses through intervention, education and outreach.
- 3476 **Deaf Children's Literacy Project** | 800 459-3529 | www.cuedspeech.org | Most deaf children are behind in English language and literacy. Reading opens the door to their future. Give them the power of English to succeed.
- 5017 **Delta Research and Educational Foundation** | 202 347-1337 | www.deltafoundation.net | Promotes research which identifies solutions to issues affecting African American women and their communities through funding and support of charitable programs of Delta Sigma Theta.

NEW JERSEY EMPLOYEES CHARITABLE CAMPAIGN

- 3584 **Diabetes Action Research and Education Foundation** | 202 333-4520 | www.diabetes-action.org | Funding innovative, promising research to prevent, treat and cure diabetes. 100% of your workplace contributions used for diabetes research and programs. We can conquer diabetes!
- 7155 **Dian Fossey Gorilla Fund International** | 800-851-0203 | www.gorillafund.org | The leading nonprofit successfully protecting endangered mountain gorillas and their critical forests in Africa. We provide direct daily monitoring, anti-poaching patrols, scientific studies, community initiatives.
- 3519 **Direct Relief** | 800 676-1638 | www.directrelief.org | Providing essential medical resources to the most vulnerable communities in the U.S. and worldwide, improving health and transforming lives.
- 3471 **Disabled American Veterans (DAV) Charitable Service Trust** | 877 426-2838 | cst.dav.org | Empowering Veterans To Lead High-Quality Lives With Respect...Prosthetics Research and Devices for Amputees; Traumatic Brain Injury Therapy; Guide/Assistance Dogs; Comfort for Survivors.
- 7181 **Disabled Children's Fund** | 240-929-4281 | www.disabled-child.org | Assisting poor, disabled children worldwide with free distribution of specialty wheelchairs, walkers, crutches, rehabilitation equipment and therapy.
- 7115 **Dogs for Better Lives** | 800 990-3647 | www.dogsfortheblind.org | Since 1977, Dogs for the Blind has been rescuing, training and placing dogs from animal shelters to help people with different disabilities, challenges and needs.
- 4501 **Dogs Last Chance** | 310 271-6096 | www.LCAAnimal.org | Puppy mills, vivisection/dissection, fur, illegal animal-fighting; Help us end animal abuse! Doing ground breaking undercover investigations to expose animal abusers and promoting cruelty-free lifestyles.
- 7063 **Dogs On Death Row** | 866 574-7726 | www.dodr.org | We rescue dogs facing imminent execution if they do not get interim financial sponsors or foster parents or receive medical treatment required to become adoptable.
- 7182 **Educated Choices Program, Inc.** | 404 806-2294 | www.ecprogram.org | Educating for a Better World - We educated students to explore how food choices impact our health, the environment and animals.
- 4434 **Elephant Sanctuary** | 931 796-6500 | www.elephants.com | The nation's largest natural habitat refuge for endangered elephants retired from circuses and zoos. Improving elephant lives through sanctuary, education, research and overseas assistance.
- 3432 **Elephants, Saving Elephants and Habitat Worldwide** | 817 597-0956 | www.elephantconservation.org | Elephants killed for their ivory. Habitat becomes roads, farms and villages. When elephants and humans cross paths, deaths occur. Help protect elephants, habitat and people.
- 3563 **Enchanted Peach Children's Foundation** | 800 323-9474 | www.childrenswish.org | Dying children exist in a world of doctors, hospitals and despair. Your donation gives hope and joy by fulfilling a favorite wish.
- 7145 **EOD Warrior Foundation** | 850 729-2336 | www.eodwarriorfoundation.org | Our mission is to improve the quality of life for the EOD family by providing emergency financial relief, scholarship opportunities, physical, social, and emotional support.
- 4435 **Equine Land Conservation Resource** | 859 455-8383 | www.elcr.org | No Land, No Horse. We lose 6,000 acres of open land every day. Help Equine Land Conservation Resource save the lands our horses need.
- 4452 **Fabretto Children's Foundation** | 703 525-8716 | www.fabretto.org | Empowering underserved children and families in Nicaragua to reach their full potential, improve their livelihoods, and take advantage of economic opportunity through education and nutrition.
- 5013 **Farm Animal Rescue, Adoption, and Sanctuary** | 530 477-1757 | www.animalplace.org | Sanctuary and advocacy for farm animals. Last four years, 16,000 animal lives saved and adopted at our 3 facilities. Mission: Compassion for all life.
- 7024 **Farm Sanctuary Inc.** | 607 583-2225 | www.farmsanctuary.org | Help us protect farm animals from cruelty and abuse, inspire change in the way society views and treats farm animals, and promote compassionate vegan living.
- 3467 **Fisher House Foundation** | 888 294-8560 | www.fisherhouse.org | We build and donate Fisher Houses at military/VA medical centers, support existing houses, help military families in need and award Scholarships for Military Children.
- 7183 **Fred Hutchinson Cancer Center** | 206-667-2745 | www.fredhutch.org | Fred Hutch unites comprehensive care and advanced research to provide the cancer treatment options and accelerate discoveries that prevent, treat and defeat cancer and diseases.
- 4494 **Freedom Alliance** | 800 475-6620 | www.freedomalliance.org | Provides college scholarships to children of fallen military heroes, support activities for wounded and deployed troops and their families.

NEW JERSEY EMPLOYEES CHARITABLE CAMPAIGN

- 3576 **Friends of Animals** | 203 656-1522 | <http://friendsofanimals.org/> | Free animals from cruelty and institutionalized exploitation. Working to stop euthanasia with our spay/neuter programs. Promoting Animal Rights. Promoting vegetarianism. Protecting animals in need!
- 7023 **Futures Without Violence** | 415 678-5500 | www.futureswithoutviolence.org | Ending violence against women and children through programs that promote respect, educate the public, and protect children. FWV trains judges, physicians, policymakers, and leaders internationally.
- 3486 **Gary Sinise Foundation** | 888 708-7757 | www.garysinisefoundation.org | Build Smart Homes for severely wounded veterans, lift the military community's spirits with Lt. Dan Band concerts, support first responders and families of the fallen.
- 7031 **Gettysburg Foundation** | 717 338-1243 | www.gettysburgfoundation.org | Working in partnership with Gettysburg National Military Park to preserve and protect the battlefield while providing a quality museum experience.
- 7156 **Gluten Intolerance Group of North America** | 253-833-6655 | www.gluten.org | Gluten can cause long-term, life-threatening health hazards. Monitoring of food supply is critical. Help to educate and audit food companies for the gluten-free consumer's safety.
- 3511 **GO2 Foundation for Lung Cancer** | 650 598-2857 | www.lungcancerfoundation.org | The #1 cancer killer is largely ignored, underfunded, and under-researched. Join our crusade to eradicate lung cancer through aggressive research, early detection, treatment, and awareness.
- 4415 **Greenpeace Fund** | 800 722-6995 | www.greenpeacefund.org | An independent, campaigning organization that uses research and public education to expose global environmental problems, and promote solutions essential to a green and peaceful future.
- 4108 **Guide Dog Foundation for the Blind, Inc.** | 800 548-4337 | www.GuideDog.org | Using innovative training methods, trains guide and service dogs to restore independence and mobility, empowering people with disabilities to live without boundaries.
- 4459 **Guide Dogs for the Blind, Inc.** | 800 295-4050 | www.guidedogs.com | Providing safety, independence and companionship to the blind and visually impaired by partnering them with exceptional guide dogs throughout their lifetime.
- 4460 **Guide Dogs of America** | 800 459-4843 | <http://www.guidedogsofamerica.org> | Every seven minutes an American loses their sight permanently. Our free guide dogs help these individuals pursue their goal of independence with confidence and dignity.
- 7184 **Habitat for Humanity International** | 800 HABITAT | www.habitat.org | We partner with families globally to strengthen communities, build or improve homes and advocate for everyone's right to live in safe, affordable housing.
- 4490 **Hearing Health Foundation** | 212 257-6140 | www.hhf.org | Hearing Health Foundation's mission is to prevent and cure hearing loss and tinnitus through groundbreaking research and to promote hearing health.
- 7065 **Heart Disease Aid and Research Fund** | 800 759-3004 | www.heart-research.org | Provides research grants, medical and humanitarian supplies to hospitals. Provides heart disease educational material to patients and families. Curing begins with a caring heart!
- 7032 **Hearts United for Animals** | 402 274-3679 | www.hua.org | National No-kill shelter and sanctuary, financial assistance for family pets needing veterinary care, providing shelter for pets of domestic abuse families, National Anti-Puppy Mill Campaign.
- 3490 **Hispanic Scholarship Fund** | 877 HSF-INFO | www.hsf.net | HSF empowers Latino families with the knowledge and resources to successfully complete higher education while providing scholarships and support services to exceptional Hispanic American students.
- 3427 **Holt International Children's Services** | 888 355-4658 | www.holtinternational.org | We help struggling families care for their children, and unite orphaned and abandoned children with adoptive families. Because every child deserves a loving, secure home.
- 3503 **Homes for Our Troops** | 866 787-6677 | www.hfotusa.org | We build mortgage-free, specially adapted homes nationwide for severely injured Veterans Post-9/11, to enable them to rebuild their lives.
- 7033 **Hope For The Warriors®** | 877 246-7349 | www.hopeforthewarriors.org | Restore self, family and hope! Our programs support employment and education, clinical health and wellness, sports and recreation, build community and military relations and more.
- 3526 **HOPE Worldwide** | 610 254-8800 | www.hopeww.org | Sick mothers in Cambodia. Orphans in Kenyan slums. Flood victims in the Philippines. Undereducated youth in the U.S. Help us bring them hope.

NEW JERSEY EMPLOYEES CHARITABLE CAMPAIGN

- 3457 **Hospice Foundation of America** | 800 854-3402 | www.hospicefoundation.org | Supporting individuals through life-ending illness and assisting families /caregivers with grief and loss. We emphasize hospice and palliative care while providing public and professional education.
- 5020 **Humane Society of Atlantic County** | 609 347-2487 | www.HumaneSocietyAC.org | We provide shelter and affordable veterinary care for homeless and owned animals and provide programs to enable people in need to keep their family pets.
- 7185 **In Defense of Animals** | 415 448-0048 | www.idausa.org | We honor the rights and interests of all animals. We advocate for changes in laws, advance rights, improved welfare and environmental protection.
- 4498 **International Myeloma Foundation** | 818 487-7455 | www.myeloma.org | The International Myeloma Foundation (IMF) is dedicated to improving the quality of life of myeloma patients while working toward prevention and a cure.
- 7070 **Iraq and Afghanistan Veterans of America, Inc.** | 212 982-9699 | www.iava.org | Help address critical issues facing Iraq and Afghanistan veterans and their families, including mental health injuries, Traumatic Brain Injury, high suicide rates and staggering unemployment.
- 3449 **Israel Guide Dog Center for the Blind** | 215 343-9100 | www.israelguidedog.org | Faithful assistance guide dogs are raised and trained to provide blind Israelis with independence, safe mobility and self-confidence. Clients receive the dogs for Free.
- 3477 **K9s For Warriors** | 904 686-1956 | www.k9sforwarriors.org | Rescue dogs trained as service dogs for veterans / active duty military suffering from PTSD, TBI, or MST. New leash on life to military heroes.
- 3508 **Kidney Cancer Association** | 800 850-9132 | www.kidneycancer.org | We strive for a world without kidney cancer. Help us fund breakthrough research, educate patients and health professionals and advocate for patients.
- 3424 **La Jolla Institute for Immunology** | 858 752-6500 | www.didnri.org | We're moving closer to a cure. Our cutting-edge research is advancing new treatments and cures for millions suffering from diabetes and other chronic, debilitating diseases.
- 3533 **Leukemia Clinical Research Foundation** | 651 229-7131 | www.leukemiaclinicalresearchfoundation.org | Leukemia can be cured! We live that dream by supporting research where it has the most impact - on patients in clinical settings.
- 3516 **Lutheran World Relief** | 800 597-5972 | <https://lwr.org> | Affirming God's love for all people, we work with Lutherans and partners around the world to end poverty, injustice and human suffering.
- 4416 **Lymphoma Research Foundation** | 800 235-6848 | lymphoma.org | Funding innovative research; providing information and services to Hodgkin and non-Hodgkin lymphoma patients/caregivers. Our mission: eradicate lymphoma and serve those touched by this disease.
- 3590 **MADRE, Inc.** | 212 627-0444 | www.madre.org | MADRE advances women's human rights by meeting urgent needs in communities and building lasting solutions to the crises women face.
- 7125 **Marine Corps -- Law Enforcement Foundation** | 877 606-1775 | www.mc-lef.org | Scholarships awarded to children of fallen, active duty Marines or Federal Law Enforcement. Assistance for children of Marines for medical expenses not covered by insurance.
- 3405 **Marine Corps Scholarship Foundation** | 866 496-5462 | www.mcsf.org | Help provide scholarships to children of current/former Marines, and children of Navy Corpsmen that served with the Marines, to pursue collegiate or VoTech education.
- 3553 **Marine Mammal Center** | 415 289-SEAL | www.MarineMammalCenter.org | Thousands of orphaned, sick and injured marine mammals would have died if not for our state-of-the-art animal care and research facilities, dedicated volunteers, and you.
- 4523 **Marine Mammal Stranding Center** | 609 266-0538 | www.mmsc.org | Hundreds of whales, dolphins, seals and sea turtles wash ashore on NJ beaches each year. Without MMSC, animals would languish and die on the beaches.
- 7072 **Matthew 25: Ministries** | 513 793-6256 | www.m25m.org | Helping the poorest of the poor. Providing disaster relief, food, clothing and education materials. Meeting the most basic needs of severely suffering people.
- 4504 **Mexican American Legal Defense and Educational Fund** | 213 629-2512 | www.maldef.org | MALDEF promotes and protects the civil rights of Latinos in the areas of Education, Employment, Immigrant Rights, Political Access and administers scholarships for Law students.
- 3593 **Military Officers Association of America Scholarship Fund** | 800 234-6622 | www.moaa.org/scholarshipfund | 100% of all CFC donations provide interest-free loans or grants to children from military families (all seven services, officer and enlisted) pursuing a college education.

NEW JERSEY EMPLOYEES CHARITABLE CAMPAIGN

- 7037 **Monmouth County SPCA** | 732 542-0040 | www.monmouthcountyspca.org | 4,300 homeless, lost, abandoned or abused animals found new homes last year through the efforts of the MCSPCA. Help us save more this year.
- 7038 **Multiple Sclerosis Foundation** | 888 MS-FOCUS | www.msfocus.org | Multiple Sclerosis impacts individuals and families. Our free national programs such as helplines, education, crisis intervention, homecare grants, and assistive devices motivate, educate and empower.
- 3482 **National CASA/GAL Association for Children** | 800 628-3233 | www.casaforchildren.org | Every child deserves a safe, permanent home. Support CASA advocates nationwide who are providing abused and neglected children with hope for a better future.
- 3530 **National Center for Missing & Exploited Children** | 800 THE-LOST | www.missingkids.org | Providing assistance to law enforcement and families to help find missing children and prevent child sexual exploitation and victimization.
- 3501 **National Park Trust** | 301 279-7275 | www.parktrust.org | NPT impacts park preservation by providing in-depth environmental outdoor education experiences for underserved youth and families; and by providing funding to complete park preservation projects.
- 3532 **National Veterans Legal Services Program, Inc.** | 202 265-8305 | www.nvlsp.org | Providing free legal services to help veterans and their families secure disability benefits from the Department of Veterans Affairs and the United States Armed Forces.
- 7186 **Native Forward Scholars Fund** | 505 881-4584 | www.aigcs.org | Native Forward provides post-secondary education scholarships & services to American Indian / Alaska Native students, preparing them for professional careers and leadership in their communities.
- 7187 **Navy SEAL Foundation, Inc.** | 757-363-7490 | www.navySEALfoundation.org | Honor and remember our Navy SEAL warriors and their families. Invest in education, family resiliency, and wounded care. Support surviving families. Preserve a legacy.
- 4432 **NEADS INC** | 978 422-9064 | www.neads.org | Independence and companionship for wounded warriors, autistic children, the deaf and disabled by providing custom-trained Service Dogs. Help provide these much needed Service Dogs!
- 7188 **NephCure Kidney International** | 610-540-0186 | www.nephcure.org | Saving Kidneys. Saving Lives. We're the only organization supporting research seeking new treatments, the causes and a cure for Focal Segmental Glomerulosclerosis and Nephrotic Syndrome.
- 3493 **OneSky** | 510 525-3377 | www.halfthesky.org | Half the Sky was created to enrich the lives of orphaned children in China. Our goal is to ensure every orphaned child a brighter future.
- 5025 **Operation First Response, Inc.** | 888 289-0280 | www.operationfirstresponse.org | Serves wounded Warriors/Veterans and their families with financial needs. Assistance varies based on individual needs ranging from rent, utilities, vehicle payments, groceries and travel.
- 4529 **Operation Homefront** | 800 722-6098 | www.operationhomefront.net | Be a caring Patriot! Support Operation Homefront's effort to build strong, stable and secure military families through emergency financial and other assistance.
- 3592 **Parkinson's Research - The Michael J. Fox Foundation for Parkinson's Research** | 800 708-7644 | www.michaeljfox.org | One urgent goal: Eliminate Parkinson's disease in our lifetime. 89 cents of every dollar spent goes to research, leading to \$450 million granted since 2000.
- 3544 **Paws for Purple Hearts** | 707 238-5110 | www.pawsforpurplehearts.org | Teaching Veterans with Post Traumatic Stress Disorder to train service dogs for fellow Veterans with physical disabilities and combat-related injuries.
- 3507 **Paws With A Cause** | 800 253-PAWS | www.pawswithacause.org | Custom-trained Assistance Dogs enhance independence and quality of life for people with disabilities nationally. We increase awareness of the rights / roles of Assistance Dog Teams.
- 7189 **Paws4vets** | 910 632-0615 | www.paws4vets.org | Placing customized Service Dogs with Veterans and their dependents living with disabilities including PTSD, TBI, MST & Moral Injury.
- 3545 **Pearl S. Buck International, Inc.** | 800 220-BUCK | www.pearlsbuck.org | Pearl S. Buck International® builds better lives for children around the globe, who without your support, would not be educated or have access to healthcare.
- 7159 **Pediatric Brain Tumor Foundation of the United States, Inc.** | 800-253-6530 | www.curethekids.org | Leading funder of medical research for childhood brain tumors. Offers free patient family support services, including educational materials, college scholarships for survivors, and family camps.
- 7190 **Pediatric Cancer Research Foundation** | 949 859-6312 | www.pcrf-kids.org | Someday is today - we fund pioneering research that improves treatment, increases survival rates, and reaches for a cure. Help bring hope to children battling cancer.

NEW JERSEY EMPLOYEES CHARITABLE CAMPAIGN

- 7191 **Pennsylvania Society For The Prevention Of Cruelty To Animals** | 215-463-2311 | www.pspca.org | PSPCA rescues animals from cruelty and neglect, rehabilitates them medically and behaviorally, places them with new loving families. Our programs embody our no-kill philosophy.
- 3436 **PETA: People for the Ethical Treatment of Animals** | 757 622-PETA | www.peta.org | Fight cruelty. Save lives! Your gift makes a kinder world for animals through undercover investigations, rescues, humane education, spay/neuter, and high-profile advocacy campaigns.
- 3502 **Pets for Patriots, Inc.** | 877 473-8223 | www.petsforpatriots.org | Provide recovery and transform the lives of veterans, wounded warriors and active duty military through the adoption and care of at-risk shelter dogs and cats.
- 7192 **Pets of the Homeless** | 775 841-7463 | www.petsofthehomeless.org | Feeding Pets of the Homeless® mission is to feed and provide basic emergency veterinary care to pets of the homeless who do not have resources.
- 7193 **Philippine Children's Shelter** | 651 493-1551 | www.philippinechildrensshelter.org | Providing hungry Filipino children with food, medicine, education and a loving home through four shelters and a school. You can make the difference in the life of an orphan!
- 4442 **PKD Foundation** | 800 753-2873 | www.pkdcure.org | Accelerating treatments to patients with polycystic kidney disease. We're dedicated to finding a cure for this common genetic disease that leads to kidney failure/death.
- 7076 **Planned Parenthood Federation of America** | 800 230-PLAN | www.plannedparenthood.org | Ensure access to affordable reproductive health care, protect reproductive rights, and promote access to comprehensive medically accurate sexuality education, domestically and internationally.
- 7194 **Public Employees for Environmental Responsibility** | 202 265-7337 | www.peer.org | PEER is watchdog organization that supports public employees in advocating for sound stewardship of natural resources, maintaining government accountability and fighting for scientific integrity.
- 7077 **Puppies Behind Bars** | 212 680-9562 | www.puppiesbehindbars.com | Wounded war veterans returning from Iraq and Afghanistan receive prison-trained service dogs, free of charge, through the Dog Tags initiative of Puppies Behind Bars.
- 7195 **Purple Heart Foundation** | 703 256-6139 | www.purpleheartfoundation.org | In combat, warriors count on their comrades. At home, they count on us!
- 7161 **Rainforest Trust** | 800-456-4930 | www.RainforestTrust.org | Save rainforests for endangered wildlife! We've protected over 15 million acres from deforestation since 1988. You can save an acre for as little as \$1!
- 7041 **Ramapo-Bergen Animal Refuge** | 201 337-5180 | www.rbari.org | Protecting abandoned, abused, and unwanted animals by finding them forever homes, we give our cats and dogs food, shelter, medical treatment, and, of course, love.
- 3551 **Rape, Abuse, & Incest National Network (RAINN)** | 202 544-3064 | www.rainn.org | Runs National Sexual Assault Hotline; largest anti-rape org. Free, 24-7 services help 150,000 people/year. Programs prevent rape, help victims, bring rapists to justice.
- 3550 **Reflex Sympathetic Dystrophy Syndrome Association of America** | 877 662-7737 | www.rsds.org | Providing support, education, and hope to everyone affected by CRPS/RSD, a painful, debilitating condition. Help fund research to develop better treatments and a cure.
- 7196 **RESOLVE: The National Infertility Association** | 703-556-7172 | www.resolve.org | We provide education, support groups, helpline, and connections to resources to help those struggling with infertility build a family.
- 3505 **Restless Legs Syndrome Foundation** | 512 366-9109 | www.rls.org | Help provide education and support to millions of people with Restless Legs Syndrome (RLS). We fund research toward a cure for this debilitating neurological disease.
- 3572 **Rocky Mountain Elk Foundation** | 406 523-4500 | www.rmef.org | Ensures future of elk, other wildlife and our hunting heritage by conserving, restoring, and enhancing natural habitats through land purchases, conservation easements, education and research.
- 3484 **Sarcoma Foundation of America, Inc.** | 301 253-8687 | www.curesarcoma.org | CureSarcoma. This rare cancer of connective tissues is prevalent in children and receives little government funding, yet impacts 50,000 kids and adults daily.
- 7137 **Save the Chimps** | 772 429-2225 | www.savethechimps.org | Rescuing chimpanzees from research, entertainment and the pet trade, we provide them the space needed to heal and enjoy a happy and healthy life!

NEW JERSEY EMPLOYEES CHARITABLE CAMPAIGN

- 3487 **Save the Manatee Club, Inc.** | 800 432-5646 | www.savethemanatee.org | Leave a lasting legacy! Help us advocate for manatee and habitat protection, promote public awareness, sponsor research, rescue, rehabilitation and release efforts.
- 7197 **SAVE, A Friend to Homeless Animals** | 609-309-5214 | www.savehomelessanimals.org | Rescue, shelter, rehabilitate and place homeless dogs and cats. Teach inner-city youth and students with disabilities how to respect and to be safe around animals.
- 3587 **Scholarship America** | 800 279-2083 | www.scholarshipamerica.org | Our scholarships help students in need gain access to college. Our support, through financial literacy and college readiness tools, shows them the path to success!
- 3559 **Search Dog Foundation** | 888 459-4376 | www.SearchDogFoundation.org | Saving dogs and people! We rescue dogs, partner them with firefighters, and train them to locate people buried alive during disasters. Join the search!
- 4510 **Seeing Eye, Inc.** | 800 539-4425 | www.SeeingEye.org | Enhancing lives by bringing independence, dignity and self-confidence to blind people through our Seeing Eye® dogs. These dogs bring mobility, safety and self-sufficiency to thousands.
- 4497 **Semper Fi & America's Fund** | 760 725-3680 | www.SemperFiFund.org | Immediate financial assistance and lifetime support provided to wounded, critically ill, and injured service members and their families. A+ and 4 stars ratings.
- 7044 **SEVA Foundation** | 877 764-7382 | www.seva.org | Imagine being blind one day and seeing the next. Sustainable programs prevent blindness/restore sight in underserved and impoverished populations, helping 4 million people see.
- 4419 **Shriners Hospitals for Children** | 800 241-4438 | www.shrinershospitalsforchildren.org | Children suffering from burns, spinal cord injuries, and orthopedic conditions receive world-class medical care in a family-centered environment regardless of ability to pay.
- 4511 **Skin Cancer Foundation** | 212 725-5176 | www.skincancer.org | Skin cancer, the world's most common cancer, is occurring at epidemic levels. Your support enables us to continue our public education programs and groundbreaking research.
- 7198 **Society for Science** | 202-785-2255 | www.societyforscience.org | Society for Science is dedicated to expanding scientific literacy, effective STEM education, and scientific research.
- 4512 **Soldiers' Angels** | 210 629-0020 | www.soldiersangels.org | Adaptive laptops for wounded warriors, VA assistance for veterans, baby showers for wives of deployed troops. We provide comfort to America's military and their families.
- 3567 **Southeastern Guide Dogs, Inc.** | 800 944-3647 | www.guidedogs.org | Paws for Independence and Paws for Patriots programs provide guide dogs for visually impaired individuals and veterans, and service dogs for veterans with PTSD.
- 7138 **Special Operations Warrior Foundation** | 813 805-9400 | www.specialops.org | Provide scholarship grants and counseling to children of special operations who die in the line of duty. Provide financial assistance to wounded special operations personnel.
- 3560 **Stand Up To Cancer** | 424 283-3600 | www.standup2cancer.org | Raises funds for innovative, translational research that can get new therapies to patients quickly and save lives. Facilitates collaborations among renowned investigators across multiple disciplines.
- 7199 **The Student Conservation Association** | 603-543-1700 | www.thesca.org | Every day our parks and natural resources are depleted. We're inspiring youth with hands-on challenges to become stewards of our environment - creating a better world.
- 7200 **Suicide Awareness Voices of Education** | 952 946-7998 | www.save.org | To prevent suicide through public awareness and education, reduce stigma and serve as a resource to those touched by suicide.
- 3565 **Thyroid Association, American** | 800 849-7643 | www.thyroid.org | Cancer kills. Research cures. Your support turns scientific discovery into lifesaving medical practice. Support thyroid research to improve the lives of patients with thyroid-related diseases.
- 3568 **Tigers in America** | 212 255-6547 | www.tigersinamerica.org | 7,000 captive-bred tigers in America. We rescue abused and abandoned tigers and transport them to sanctuaries that provide lifetime food, safety and medical care.
- 4444 **TMJ Association, Ltd.** | 262 432-0350 | <http://www.tmj.org> | Jaw disorders affect a person's ability to speak, eat, chew, smile, kiss and even breathe. We promote research, scientifically validated treatments, and vital coping skills.
- 3535 **Toys For Tots Foundation** | 703 640-9433 | www.toysfortots.org | Brighten a child's face on Christmas morning. Help the Marines provide a treasured gift and a cherished memory for millions of our nation's neediest children.

NEW JERSEY EMPLOYEES CHARITABLE CAMPAIGN

- 7140 **Travis Manion Foundation** | 215 348-9080 | www.travismanion.org | The Travis Manion Foundation empowers Veterans and Families of the Fallen to inspire the next generation of leaders by putting Character into Action.
- 7201 **Trevor Project** | 310-271-8845 | www.thetrevorproject.org | Crisis & suicide prevention for LGBTQ+ youth. We provide life-saving, life-affirming resources that create a safe, supportive & positive environment for all.
- 3547 **UCSF Benioff Children's Hospital Foundation** | 800 841-4642 | www.chofoundation.org | You can help save a child's life. Donations help sick kids with advanced medical treatment and find new cures for childhood cancer and other diseases.
- 4471 **United States Association for UNHCR** | 800 770-1100 | www.UNrefugees.org | Help refugees. Over 54 million people, mostly women and children, have fled starvation, persecution and war. Provide protection, shelter, food, medical care: life saving aid.
- 7046 **USA Cares Inc.** | 800 773-0387 | www.usacares.org | Emergency financial assistance for military and Veteran Families in the form of grants - not loans. We help with PTSD, Foreclosures, Evictions, Utilities, Unemployment, and More.
- 3513 **Vegan Outreach** | 530 302-5089 | www.veganoutreach.org | Saving farmed animals from a lifetime of misery by persuading students to go veg on hundreds of college campuses every year.
- 5034 **Veteran Tickets Foundation** | 888 241-1550 | www.VetTix.org | Supporting our Military, Veterans and their Families with entertainment, lasting memories and reintegration opportunities by providing tickets to sporting events, concerts, and family activities.
- 4405 **Veterans of Foreign Wars Foundation** | 816 968-1128 | www.vfwfoundation.org | Help VFW Foundation support US troops! Education scholarships, military family financial assistance, phone connections home, VA claims assistance and patriotic community service programs. All free.
- 4472 **Water.org** | 816 877-8400 | water.org | Nearly one billion people lack access to clean water. Twice as many don't have access to a toilet. \$25 can change that for one person.
- 7202 **World Animal Protection** | 646-783-2200 | www.worldanimalprotection.us | World Animal Protection works globally to move the world to protect animals. Our vision is a world where animals live free from suffering.
- 7162 **Wounded Warrior Emergency Support Fund** | 301-588-3283 | www.airwarriorcourage.org/ | Honor our Wounded Warriors! We provide rehab services at three Military Medical Centers, and starter IRS 529 College Savings Plans for dependents of aircrews KIA.
- 3495 **Wounded Warriors in Action Foundation** | 813 938-1390 | wwiaf.org | Serves our nation's combat wounded Purple Heart recipients by providing world-class outdoor sporting activities to recognize their sacrifice, encourage their independence, and promote their healing.
- 7203 **Wreaths Across America** | 877-385-9504 | www.wreathscrossamerica.org | Placing wreaths on veteran gravestones in all 50 states and beyond, we remember the fallen, honor those that serve and teach children about freedom.
- 7204 **Yellowstone Forever** | 406 848-2400 | www.yellowstone.org | Protect, preserve, and enhance Yellowstone National Park. Your gift helps ensure that the wonders and wildlife of Yellowstone remain undiminished for generations to come.

United Way Of Greater Mercer County

- 3600 **United Way of Greater Mercer County** | 609-896-1912 | www.uwgmc.org | United Way of Greater Mercer County invests in programs, community partnerships, and volunteer engagement to propel individuals and families to reach their fullest potential.
- 3706 **Afrikan Link Initiative** | 862-387-2877 | www.AfricanLink.org | African Link Initiative is an evidence-based identity development experience for youth of African descent that has 3-parts and culminates in a birthright trip to Ghana.
- 3686 **Arm In Arm** | 609-396-9355 | www.arminarm.org | Arm in Arm partners with our community to help neighbors thrive, with support to end hunger, prevent homelessness, and promote income stability.
- 3700 **Boys & Girls Club of Mercer County** | 609-392-3191 | www.bgcmercerc.org | Boys & Girls Clubs of Mercer County helps youth reach their full potential through programs focusing on education, career/college preparation, leadership and building healthy lifestyles.
- 3602 **CancerCare, Inc.** | 800-813-HOPE (4673) | www.cancercare.org | CancerCare is the leading national organization providing free, professional support services and information to help people manage the emotional, practical and financial challenges of cancer.

NEW JERSEY EMPLOYEES CHARITABLE CAMPAIGN

- 3612 **Catholic Youth Organization of Mercer County - CYO** | 609-396-8383 | www.cyomercer.org | Community organization providing affordable, quality educational & recreational services. Rooted in Catholic tradition, they do so inclusively & non-discriminatorily respecting culture & faith of all.
- 3677 **Central Jersey Legal Services** | 609-695-6249 | www.centraljerseylegalservices.com | CJS provides free advice and legal assistance to people in need. CJS saves homes, supports families, protects income and promotes fairness in the justice system.
- 3613 **Child Care Connection** | 609-989-7770 | www.ccc-nj.org | Child care resource and referral agency that counsels parents, provides referrals, offers training and TA to child providers, and administers child care subsidy programs.
- 3707 **HISPA** | 609-436-0417 | www.hispa.org | HISPA mobilizes Latino Role Models to inspire Latino students to discover their potential and desire to embrace education and achieve success.
- 3708 **HomeWorks Trenton** | 609-414-7907 | www.homeworkstrenton.org | HomeWorks Trenton equips young women from marginalized communities to achieve their potential and positively transform the world by providing a supportive and educational residential environment.
- 3709 **Housing Initiatives of Princeton** | 609-921-2328 | www.housinginitiativesofprinceton.org | HIP assists low-income working individuals and families experiencing housing insecurity in Mercer County with stable housing, better employment, and a network of support services.
- 3627 **Jewish Family & Children's Service of Greater Mercer County (JFCS)** | 609-987-8100 | www.jfcsonline.org | JFCS provides comprehensive social services to the greater Mercer community including mental health counseling, food pantry & distribution services and senior support.
- 3660 **John O. Wilson Hamilton Neighborhood Service Center, Inc.** | 609-393-6480 | www.jowilsoncenter.org | John O. Wilson Hamilton Neighborhood Service Center, Inc. is a non-profit, missioned to improve the quality of life for low-income residents of Hamilton Township.
- 3696 **LALDEF -Latin American Legal Defense and Education Fund** | 609-688-0881 | laldef.org | The Latin American Legal Defense and Education Fund's mission is to promote the rights of immigrants; facilitate access to health care, education, and legal representation. healthcare, digital literacy, citizenship, healthcare, financial stability, etc.
- 3632 **Mercer Street Friends** | 609-656-5207 | www.mercerstreetfriends.org | Nourishing bodies and minds, empowering families and communities
- 3690 **Oaks Integrated Care** | 609-267-5928 | www.oaksintcare.org | Oaks Integrated Care is dedicated to improving the quality of life for individuals and families living with a mental illness, addiction, or developmental disability
- 3698 **PEI Kids [Prevention Education Inc.]** | 609-695-3739 | www.peikids.org | PEI Kids is dedicated to promoting and maintaining a safe environment for all children.
- 3703 **Princeton Mobile Food Pantry** | 609-865-4396 | www.pmfpantry.org | The mission of the Princeton Mobile Food Pantry, Inc. is to provide food and other support to underserved members of the Princeton, NJ community.
- 3710 **Princeton Nursery School** | 609-921-8606 | www.princetonnurseryschool.org | PNS provides its diverse student population high-quality, affordable early childhood education and supportive family services to low-to-moderate-income families in central New Jersey.
- 3711 **Rolling Harvest Food Rescue** | 215-510-8112 | rollingharvest.org | RHFR connects surplus produce from local farms and food producers to communities in need through food recovery efforts and distribution to area hunger relief sites.
- 3704 **The Children's Home Society of New Jersey** | 609-358-1334 | www.chsofnj.org | CHSofNJ helps and protects at-risk children and families achieve their potential; strengthen families, and strive for stable, permanent, and loving homes for every child.
- 3705 **The Father Center of New Jersey** | 609-695-3663 | www.thefathercenter.org | The Father Center empowers Fathers to be good parents by offerings emotional, social, and economic resources to improve their lives and those of their children.
- 3712 **UrbanPromise Trenton, Inc.** | 609-439-9454 | www.urbanpromisetrenton.org | UrbanPromise Trenton provides Trenton's children and young adults with the skills necessary for academic achievement, life management, spiritual growth, and leadership.
- 3713 **Volunteers of America Delaware Valley** | 856-854-4660 | www.voadv.org | Volunteers of America Delaware Valley is a non-profit that provides community-based assistance to populations in need so that they can lead self-fulfilled, independent lives.

United Way Of Greater Union County

- 2500 **United Way of Greater Union County** | 908-353-7171 | uwguc.org | To improve lives and build strong communities by uniting individuals and organizations with the will, passion, expertise and resources needed to solve problems.

NEW JERSEY EMPLOYEES CHARITABLE CAMPAIGN

- 2590 **Bridges Outreach Inc.** | 908-273-0176 | <https://bridgesoutreach.org> | Helps hundreds exit or avoid homelessness in 2023, shattering prior year impact.
- 2591 **Community Coordinated Child Care of Union County Inc.** | 973-923-1433 | www.cccunion.org | CCCC of Union County is a private nonprofit agency dedicated to improving the quality, accessibility and affordability of child care and related work/family services.
- 2592 **Community Food Bank of NJ** | 908-355-3663 | <https://cfbnj.org> | We serve as a champion for addressing root causes of hunger, delivering neighbor-centered solutions and fostering collaborative partnerships across all sectors of society for New Jersey.
- 2593 **Covenant House** | 844-912-1291 | <https://covenanthousenj.org> | Helping Youth Facing Homelessness and Human Trafficking Survivors Our goal is to provide high quality services to as many people as possible.
- 2589 **Elizabeth Coalition to House the Homeless Inc.** | 908-355-2060 | www.theelizabethcoalition.org | Mission to help the homeless and near homeless by giving people the tools and support they need to live healthy, self-sufficient lives
- 2594 **Grace Giving and Receiving Assistance for Our Communitys Esse** | 908-259-4744 | www.gracegivingreceiving.org | GRACE is a vital source for our community to get the nutritious food and household supplies they need. Hunger
- 2595 **Jefferson Park Ministries** | 908-469-9508 | www.jeffersonparks.com | Providing services to the Haitian community and the community at large within the city of Elizabeth and the State of New Jersey.
- 2532 **Jewish Family Service of Central NJ (JFS Central)** | 908-352-8375 | <https://jfscentralnj.org> | A non-sectarian health and social service agency, is to strengthen family life and encourages personal growth by providing specialized quality services to individuals and families.
- 2596 **Rahway Community Action Organization Inc.** | 732-382-9311 | <https://www.rahwaycao.org/> | Their focus spans early childhood education, family strengthening, and senior services.
- 2597 **Rahway Day Care Center Inc.** | 732-382-0544 | www.rahwaydaycarecenter.org | A private non-profit child care center proudly serving the community since 1972. We strive to provide a clean, safe and educational environment for young children and their families.
- 2598 **Salvation Army Elizabeth** | 908-352-7057 | <https://easternusa.salvationarmy.org/new-jersey/plainfield/> | The Salvation Army, an international movement, is an evangelical part of the universal Christian Church. Its message is based on the Bible.
- 2599 **Salvation Army Plainfield** | 908-756-2595 | <https://easternusa.salvationarmy.org/new-jersey/plainfield/> | The Salvation Army, an international movement, is an evangelical part of the universal Christian Church. Its message is based on the Bible.
- 2502 **The Arc of Union County** | 973-315-0000 | <http://arcunion.org> | To empower and support people with intellectual and developmental disabilities and their families. Ensure all people associated with the organization realize a full and productive life.
- 2528 **United Family and Children Society** | 908-755-4848 | <https://unitedfamily.org> | Focus is on mental health services, adoption, foster care and/including services for 175 de-institutionalized adults in a Plainfield residential healthcare facility.
- 2529 **Urban League of Union County** | 908-351-7200 | www.uloucny.org | A non-profit community service organization founded in 1944. We provide essential services in education, housing, health, employment, and advocacy.
- 2530 **YM-YWHA of Union County** | 908-289-8112 | www.uniony.org | To enrich the life of the Jewish and general community by developing and implementing programs for the recreational, educational, cultural, physical and social needs.
- 2533 **YWCA of Eastern Union County** | 908-355-1995 | www.ymca.org/locations/ymca-eastern-union-county | Atrengthen communities by connecting people to their potential, purpose and each other. In 10,000 communities across the country.

UNAFFILIATED

- 6503 **180 Turning Lives Around, Inc.** | 732-264-4360 | <https://www.180nj.org> | 180 Turning Lives Around, Inc. empowers domestic and sexual violence victims through crisis response, shelter, hotlines, counseling, legal support, housing, advocacy, prevention, education, and information.
- 0707 **A Place For Us, Atlantic County Women's Center DBA AVANZAR** | 609-601-9925 | <https://avanzarnow.org> | A Social Justice agency focused on equitable inclusiveness, providing domestic violence, sexual assault and human trafficking survivor and prevention services.

NEW JERSEY EMPLOYEES CHARITABLE CAMPAIGN

- 8226 **All Things Are Possible Foundation** | 609-232-2143 | <https://atapfoundation.org> | ATAP Foundation provides before and after school programs, Club Cool Kids (a Friday night STEAM) program, a 10-week Summer Empowerment Experience, Spring & Fall Break full day leadership programs, Cultural trips to Washington, DC and Harlem, NY and much more!
- 8201 **American Civil Liberties Union NJ Foundation** | 973-854-1735 | <https://www.aclu-nj.org/en> | Our mission is to preserve, advance, and expand the individual rights and liberties guaranteed by the state and federal constitutions in the courts.
- 8227 **AMVETS Service Foundation of New Jersey** | 609-526-4356 | <https://www.amvets-nj.org> | AMVETS proudly serves all American Veterans through Leadership and Advocacy. Free Resources and Programs are provided to aide in obtaining military benefits and records.
- 6507 **Anchor House Inc** | 609-396-8329 | <https://anchorhousenj.org> | Anchor House Inc. is a multi-service agency for runaway, homeless, abused and at-risk youth and their families, serving our most vulnerable population.
- 8214 **Angels Helping Animals** | 856-979-3284 | <https://www.angelshelpinganimals.com> | Angels Helping Animals is dedicated to helping improve the lives of fur babies in need. We are a family run rescue that has an amazing Angels family of volunteers, adopters and supporters. Without our Angels Family we would not be able to do what we do!
- 3430 **Animal Rescue Force, Inc.** | 732-257-7559 | <https://arf.pfinder.com> | Animal Rescue Force, Inc. helps finds homes for dogs and cats in need, spays and neuters them prior to adoption to help prevent pet overpopulation.
- 6669 **Animal Sanctuary Society, Inc.** | 856-642-0004 | <https://www.animalsanctuarysociety.org> | Animal rescue and adoption of homeless animals, veterinary care including spay and neutering, helping seriously ill and/or financially burdened people with their pets.
- 6511 **Animal Welfare Association, Inc.** | 856-424-2288 | <https://www.awanj.org/> | AWA engages children and children at heart through the human-animal bond ensuring pet adoption, education, affordable pet care and pet-assisted therapy are accessible to all.
- 0701 **ARC of Atlantic County** | 609-485-0800 | <https://thearcatlantic.org/> | The Arc of Atlantic County improves the lives of people with intellectual and developmental disabilities through direct services, advocacy, and education, making choices possible about how and where they live, learn, play and work.
- 6691 **ARVF Corp DBA Alicia Rose Victorious Foundation** | 856-784-0615 | <https://www.victoriousfoundation.org> | The Alicia Rose Victorious Foundation is a national, non-profit organization providing age-appropriate programs and activities for children and teens receiving treatment for cancer and other life-threatening illnesses.
- 6692 **Associate Alumnae of Douglas College** | 732-246-1600 | <http://douglassalumnae.org> | AADC develops/promotes connections among Douglass alumnae, providing programs/services, lifelong learning/network opportunities to meet the interests and needs of our diverse alumnae.
- 8215 **Association of NJ Environmental Commissions** | 973-539-7547 | <https://www.anjec.org> | To promote local action to protect and restore New Jersey's natural resources and to ensure healthy communities by engaging in equitable and inclusive practices through education and advocacy in support of environmental commissions.
- 8163 **Atlantic City Arts Foundation** | 856-217-1823 | <https://atlanticcityartsfoundation.org> | Atlantic City Arts Foundation creates artist opportunities, engages the community through free arts & cultural programming, and inspires future generations to pursue careers in arts!
- 6515 **Atlantic City Rescue Mission** | 609-945-5517 x116 | <https://acrescuemission.org/> | ACRM provides food, shelter, clothing, health care and programs for thousands annually. Our Education, Career Training and permanent housing placement programs restore HOPE for many.
- 0709 **Big Brothers Big Sisters of Atlantic & Cape May Counties, Inc.** | 609-573-5029 | <https://www.bbbsatlanticcape.org> | Big Brothers Big Sisters of Atlantic & Cape May Counties provides youth mentoring services for children ages 6 through 18.
- 8100 **Boys & Girls Clubs of Gloucester County** | 856-881-6084 x1115 | <http://www.gcbgc.org> | Empower disadvantaged youth to achieve their full potential as responsible citizens through inspiration and support. Encourage growth and community engagement for a brighter future.
- 1125 **Camden County College Foundation** | 856-374-4946 | <https://www.camdencc.edu/foundation> | Camden County College Foundation secures and manages private gifts, to further the mission of Camden County College, and support academic excellence and student success.
- 6501 **Camden County Hero Scholarship Fund Inc.** | 856-768-9656 | <https://www.camdencountyhero.com> | A non-profit organization providing financial/educational assistance to the families of Camden County's police, fire and EMS personnel killed in the line of duty.

NEW JERSEY EMPLOYEES CHARITABLE CAMPAIGN

- 8202 **Cathedral Soup Kitchen Inc.** | 856-964-6771 | <https://www.cathedralkitchen.org> | Cathedral Kitchen's mission is to help people out of food insecurity and champion their pursuit of stability and prosperity.
- 8169 **Catholic Charities , Diocese of Trenton** | 609=394-5181 | <https://www.catholiccharitiestrenton.org> | Catholic Charities, Diocese of Trenton restores dignity and independence to individuals and families, especially those in need, by providing services, advocating for their rights and promoting community building.
- 8228 **Catholic Family & Community Services Diocese of Paterson** | 973-279-7100 | <https://ccpaterson.org/> | Catholic Family & Community Services empowers marginalized individuals & families, guiding them toward self-sustainability through compassionate service, advocacy, education, and community building.
- 6719 **Children's Hospital of Philadelphia** | 267-426-5332 | <https://chop.edu> | Children's Hospital of Philadelphia strives to be the world leader in pediatric health care, providing excellent patient care, innovative research and quality professional education.
- 8102 **ChoiceOne Pregnancy and Sexual Health Resource Centers** | 215-269-6911 | <https://mychoiceone.org> | Free and confidential services for mental health counseling, mentoring, sexual health education, STI screening, ultrasounds, pregnancy testing, parenting & scholarship programs and maternity/baby supplies.
- 6549 **Community Action Service Center** | 609-443-4464 | <https://www.njrise.org> | Rise provides a food pantry, summer camp, adult and youth programming, case management, and referrals to assist hundreds of local struggling families.
- 6540 **Community Food Bank of New Jersey Inc.** | 908-355-3663 | <https://www.cfbnj.org> | CFBNJ serves as a champion for addressing root causes of hunger, delivering neighbor-centered solutions and fostering collaborative partnerships across all sectors of society for New Jersey.
- 8229 **Community Planning & Advocacy Council** | 856-663-3998 | <https://www.cpacsj.org/> | The Community Planning & Advocacy Council advances social, racial, and economic justice to promote successful individuals, strong families, and thriving communities.
- 1014 **Contact of Burlington County** | 856-234-5484 | <https://www.contactburlco.org> | Contact of Burlington County is a NJ 988 Answering Center, NJ designated Sexual Violence Response for Burlington County and offers an Emotion Support Helpline
- 6621 **CONTACT of Mercer County New Jersey Inc.** | 609-737-2000 | <https://www.contactofmercer.org> | CONTACT provides free, compassionate, confidential support to those experiencing any mental health crisis including thoughts of suicide, substance use crises, or any emotional distress.
- 6526 **Crisis Pregnancy Center of South Jersey Inc. DBA Cornerstone Women's Resource Center** | 856-935-0304 | <http://www.pathtolifepartners.org> | We provide support and material assistance for pregnant and parenting mothers; prenatal/parenting education; pregnancy loss recovery counseling; and abstinence education to area school youths.
- 8171 **Delaware Valley Golden Retriever Rescue, Inc.** | 717-484-4799 | <https://www.dvgrr.org> | Since 1993, DVGRR has successfully placed thousands of Golden Retrievers, Labrador Retrievers, Goldendoodles and Labradoodles into new homes. We are a 501(c) (3) relying on donations, fundraising events and retail proceeds to provide top quality care to all DVGRR dogs.
- 6551 **EASEL Animal Rescue League** | 609-477-9863 | <https://www.easelnj.org> | Vet care, Low-cost community care, spay/neuter and adoption of dogs and cats
- 1239 **Elijah's Promise** | 732-545-9002 | <https://www.elijahspromise.org> | Elijah's Promise harnesses the power of food to break the cycle of poverty, alleviate hunger, and change lives. Learn more at our agency website: elijahspromise.org!
- 8173 **Embrace Kids Foundation** | 732-247-5300 | <https://www.EmbraceKids.org> | We improve the quality of life for children facing serious health challenges through a range of services like financial assistance, education, scholarships, social services, etc.
- 8174 **Emmanuel Cancer Foundation** | 973-432-8599 | <https://www.emmanuelcancer.org/> | For 41 years, the Emmanuel Cancer Foundation has been helping NJ kids with cancer and their families, providing free counseling; material assistance, and emergency financial support. We are a helping hand, providing direct assistance that is tailored to each family's unique needs.
- 8177 **Ezer Mizion** | 718-853-8400 | <https://www.ezermizion.org> | Help us save lives and provide crucial services in ISRAEL to 650,000 of those challenged by old age, special needs, disability, mental illness, and cancer.
- 8033 **Foster and Adoptive Family Services Inc.** | 609-520-1500 | <https://www.embrella.org/> | Provides advocacy, enriching programs, training, scholarships and support services to empower foster families and foster youth to thrive.

NEW JERSEY EMPLOYEES CHARITABLE CAMPAIGN

- 8230 **Freehold Area OpenDoor** | 732-780-1089 | <https://www.faopendoor.org> | Freehold Area Open Door Food Pantry, Advocacy Program. Our mission is to assist the most vulnerable among us. Our goal is to meet our clients where they are, address their immediate needs, and then provide support as they develop skills to become self-reliant. #Betheone
- 8143 **Friends of Burlington County Animal Shelter** | 856-217-6145 | <https://www.friendsofbcas.org> | Friends enhances lives of shelter animals and helps them find homes. Reduce number of cats and dogs by sponsoring low-cost spay/neuter programs.
- 6651 **Friends of the Monmouth County Park System, Inc.** | 732-842-4000 | <https://www.friendsofmonmouthcountyparks.org> | We are a nonprofit who support Monmouth County Park System projects such as historical/natural resource preservation, recreation for urban youth and individuals with disabilities.
- 6504 **Funny Farm Rescue and Sanctuary** | 609-742-9410 | <https://funnyfarmrescue.org> | We are personally committed to the well-being of abused and abandoned animals. We provide food, shelter, medical care, compassion and love for unwanted animals.
- 8144 **Gilda's Club South Jersey** | 609-926-2699 | <https://www.cscnj.org> | The mission of CSCNJ is to uplift and strengthen people impacted by cancer by providing support, fostering compassionate communities, and breaking down barriers to care.
- 8231 **Girl Scouts of New Jersey Inc.** | 908-518-4400 | <https://www.gshnj.org> | The mission of Girl Scouts is to build girls of courage, confidence, and character, who make the world a better place. Girl Scouts Heart of New Jersey serves girls ages 5-18 in Essex, Hudson, Hunterdon, Somerset, Union, and portions of Middlesex and Warren Counties.
- 8208 **Girls on the Run New Jersey East** | 201-486-0911 | <https://www.girlsontherunnj.org/> | Girls on the Run is a positive youth development program for girls 3rd - 8th grade. Our fun evidence based curriculum inspires girls to be joyful, healthy and confident and instills valuable life skills including the important connection between physical and mental health.
- 6623 **Good Grief, Inc.** | 908-522-1999 | <https://www.good-grief.org> | Good Grief provides support, education and healthy life skills to kids, families and communities who have suffered loss and adversity by leveraging research-based programs to reduce the effects of adversity, such as divorce, bullying, and death.
- 8105 **Histiocytosis Association, Inc.** | 856-589-6606 | <https://www.histio.org> | Histiocytosis Association is dedicated to raising awareness about histiocytic disorders, providing education and emotional support, and funding research leading to better treatments and a cure.
- 6545 **Homefront Inc.** | 606-989-9417 | <https://www.homefrontnj.org> | HomeFront provides Safe, Secure Housing (shelter/ transitional/ permanent/homelessness prevention); Children's Support (camp/afterschool); Self-Sufficiency Tools (literacy/ job/life skills); Basic Resources (furniture/clothing/food).
- 6510 **House of Charity/South Jersey Catholic Ministry Appeal (SJCMA)** | 856-583-6126 | <https://camdendiocese.org/sjcma> | The House of Charity/SJCMA provides for health, social and welfare services in southern New Jersey for needy people regardless of race, creed or origin.
- 1615 **Hunterdon Land Trust** | 908-237-4582 | <https://www.hunterdonlandtrust.org> | HLT's mission is to preserve the integrity of the rural landscapes in the Hunterdon County region by protecting and enhancing natural resources, and the cultural landscape of the historic Dvoor Farm, for public enjoyment and education.
- 8182 **Integrity, Inc.** | 973-623-0600 | <https://integrityhouse.org/> | Established in 1968, Integrity House provides comprehensive addiction and mental health services to help individuals significantly improve their health and overall quality of life.
- 8218 **Interfaith Health and Support Services of Southern Ocean County, NJ** | 609-978-3839 | <https://www.interfaithsoc.org> | IHSS provides support to those living at home who are vulnerable because of age or disabilities, assisting with transportation, groceries, socialization, and Alzheimer's Caregiver Respite.
- 0721 **Jewish Family Service of Atlantic County** | 609-822-1108 | <https://www.jfsatlantic.org> | JFS encourages strong families, thriving children, health adults, energized seniors and vital communities. JFS Impacts thousands of lives throughout Atlantic & Cape May Counties.
- 1603 **Jewish Family Service of Somerset, Hunterdon and Warren Counties** | 908-725-7799 | <https://www.jewishfamilysvc.org> | JFS is a nonprofit, non-sectarian agency providing mental health counseling and other social services to a diverse client population including children, families and the elderly.
- 8232 **Junior League of Greater Princeton, Inc.** | 609-356-1471 | <https://www.jlgp.org/> | The Junior League of Greater Princeton is an organization of women focused on advancing women's leadership for community impact through volunteer action, collaboration and training.

NEW JERSEY EMPLOYEES CHARITABLE CAMPAIGN

- 8220 **K's Kitten Rescue** | 908-510-6336 | <http://kskittenrescue.org> | We rescue cats and kittens in distress, nurse them back to health as needed, and help find them safe and loving homes
- 6619 **Karen Ann Quinlan Memorial Foundation** | 973-383-0115 | <https://KarenAnnQuinlanHospice.org> | Karen Ann Quinlan Hospice is a not-for-profit organization providing high quality medical, emotional and spiritual services to hospice patients, their family members and the community.
- 8233 **KinderSmile Foundation, Inc.** | 973-744-7003 | <https://www.kindersmile.org> | The mission of KinderSmile Foundation is to provide underserved children with access to comprehensive dental care & educate children & their families about the importance of dental hygiene. Vision: a future where every child has access, & preventable dental disease is eradicated.
- 8221 **Kingsway Education Foundation** | 856-467-3300 x4205 | <https://www.krds.org/KEF> | KEF demonstrates its dedication to excellence within the Kingsway Regional School District by offering scholarships and district-wide grants that contribute to supporting students through various projects and programs.
- 1131 **Larc School** | 856-933-3725 | <https://larc.school.org> | Larc School is a non-profit, special education school, which compassionately and expertly provides educational and therapeutic services to students with multiple disabilities between the ages of 3-21. Larc has been serving families throughout South Jersey for over 50 years.
- 8010 **Lawrence Township Education Foundation** | 609-310-1831 | <https://ltnj.org> | The LTFE fosters educational excellence, creativity, and achievement in the Lawrence Township public schools by providing educator and district-wide grants for projects and programs.
- 6564 **Legal Services of New Jersey** | 732-572-9100 | <https://www.lsnj.org> | LSNJ coordinates the statewide Legal Services system, which provides free legal assistance to low-income New Jerseyans for their civil legal problems.
- 8123 **Lunch Break, Inc.** | 732-747-8577 | <https://www.lunchbreak.org> | Lunch Break offers feeding and nutrition programs, housing solutions, clothing, outreach to at-risk communities, life skills and job training, and youth and social service programs.
- 6546 **Mainstage Center for the Arts** | 609-605-2739 | <https://www.mainstage.org> | Mainstage Center for the Arts provides youth with experiences that develop positive interactions with others, greater self-worth, and an abiding appreciation for the performing arts.
- 6553 **Martin Luther King Youth Center** | 908-526-3688 | <https://www.mlkycenter.org> | Martin Luther King Youth Center provides a program which addresses the educational, developmental, cultural, social, physical, nutritional and mental needs of school aged children.
- 6565 **Marty's Place Senior Dog Sanctuary** | 609-259-1278 | <https://marty'splace.org> | Marty's Place provides a loving environment for senior dogs that are homeless. We provide quality care to all residents & peace of mind to caregivers knowing their senior dogs have forever homes in our sanctuary or foster/adoptive homes.
- 8108 **Masonic Charity Foundation of New Jersey** | 609-239-3900 | <https://www.njmasonic.org> | We provide a full continuum of comprehensive health care services for seniors, as well as scholarships and special programs designed to help students at-risk.
- 6555 **Meals on Wheels in Greater New Brunswick** | 732-249-3488 | <https://mowgnb.org> | Meals on Wheels in greater New Brunswick enriches seniors' lives and helps them maintain independence through nutritious food, human connections, and social services support
- 6626 **Meals on Wheels Mercer/Trenton/Ewing** | 609-695-3483 | <https://www.mealsonwheelsmercer.org> | MOWMC is a comprehensive nutrition program providing nutritious meals and related services, while easing the social isolation of our homebound participants. The goal of our services is to assist seniors, who wish to remain independent in their homes.
- 1631 **Meals on Wheels of Hunterdon Inc.** | 908-284-0735 | <https://www.mowih.org> | A non-profit agency offering nutrition services by providing meals and safety checks, socialization, nutrition education, and nutrition counseling for the elderly in our community.
- 8109 **Middle Earth** | 908-725-7223 | <https://www.middleearthnj.org> | Middle Earth provides employment readiness, college preparedness, life skills education, recreation, community service, mentoring, and afterschool programming to youth & their families in Somerset County.
- 8222 **Move For Hunger, Inc.** | 732-774-0521 | <https://www.moveforhunger.org> | Millions of Americans are hungry while 38% of food goes unsold or uneaten. Help us fight waste and deliver more food to communities in need.
- 8235 **New Jersey Blind Citizens Association, Inc.** | 732-291-9878 | <https://www.njbca.org> | Founded in 1910 by four blind men to assist the blind and visually impaired, NJBCA continues their legacy with free innovative, creative and educational programming in Camp Happiness, and serves the blind and visually impaired statewide with advocacy, resources and referrals.

NEW JERSEY EMPLOYEES CHARITABLE CAMPAIGN

- 6579 **New Jersey State Museum Foundation** | 609-394-5310 | <https://www.statemuseum.nj.gov> | The New Jersey State Museum Foundation partners with the New Jersey State Museum to provide educational programs and opportunities to New Jersey residents.
- 8130 **New Jersey Tree Foundation** | 609-694-8831 | <https://www.njtreefoundation.org> | The NJ Tree Foundation is a statewide nonprofit organization dedicated to planting trees in New Jersey's most underserved neighborhoods, where the need is greatest.
- 8112 **NJ Center for Tourette Syndrome and Associated Disorders Inc.** | 908-575-7350 | <https://www.njcts.org> | NJCTS provides services and advocacy for families; outreach to medical and educational communities; public awareness and support of research for treatment and a cure.
- 6633 **Ocean of Love, Inc.** | 732-270-3500 | <https://www.oceanoflove.org> | We provide financial and emotional support to the children with cancer and their families. We try to make their lives as normal as possible.
- 8172 **PAL of Egg Harbor Township** | 609-645-8413 | <https://https://www.ehtpal.org> | Our mission: To improve Police/Youth/Community relations, to advance the needs/welfare of our children, to actively participate in constructive endeavors for the promotion/safeguarding of the interest and general welfare of our children, to provide a safe meeting place
- 8236 **Partners in Learning, Inc.** | 856-374-2821 | <https://www.pilnj.org> | Provides intensive intervention for young children with autism spectrum disorders and their families for meaningful inclusion in natural settings such as home, community and school.
- 8014 **Partnership for the Delaware Estuary, Inc.** | 800-445-4935 | <http://delawareestuary.org> | Partnership for the Delaware Estuary combines science, education, and outreach efforts for clean water, healthy habitats, and strong communities for the Delaware River and Bay.
- 8223 **Princeton Battlefield Society** | 609-232-8540 | <https://pbs1777.org> | We provide American Revolution and New Jersey history educational programs as resources for children, families, educators, and the general public for awareness, understanding, and appreciation.
- 8237 **Princeton Child Development Institute** | 609-924-6280 | <https://www.pcdi.org> | PCDI, pioneering autism research, intervention, and education since 1970. Our compassionate, evidence-based services foster independence, dignity, and self-determination for individuals with autism.
- 8153 **Princeton-Blairstown Center** | 609-921-0070 | <https://princetonblairstown.org/> | Princeton-Blairstown Center empowers young people, primarily from historically marginalized communities, to strengthen their academic and social-emotional skills through experiential, environmental, and adventure-based programming.
- 8238 **Probation Assn of NJ Education Fund** | 732-223-1799 | <https://www.panj.org> | PANJ EF provides an annual training conference and scholarships to members and their families.
- 6508 **Ramapo College Foundation** | 201-684-7611 | <http://www.ramapo.edu/foundation> | Provide the resources "that make a difference" in the Ramapo College's quest for educational excellence, namely for student scholarships, faculty development, and educational and community programs.
- 6518 **Rowan University Foundation, Inc.** | 856-256-4097 | <https://rowan.edu> | Our dedication to the success of Rowan University and its students is reflected in our efforts to establish and cultivate partnerships with generous individuals, foundations, and corporations. This investment in excellent public higher education affirms our commitment!
- 8239 **Sammy's Hope Inc.** | 732-518-2313 | <https://www.sammyshope.org> | Our Mission at Sammy's Hope is to place homeless animals in loving forever homes while providing shelter, socialization, medical care, and enrichment. Hopes and dreams really do come true for the animals in our care. Your generous support is critical to fulfilling this mission.
- 8192 **Sea Turtle Recovery, Inc.** | 609-667-4076 | <https://seaturtlerecovery.org/> | Sea Turtle Recovery is dedicated to the rehabilitation of sick and/or injured sea turtles and educating about sea turtles and ways to protect their future.
- 2523 **Second Street Youth Center, Inc.** | 908-561-0003 | <https://www.ssync.org> | Second Street Youth Center provides Early Childhood, STEM focused After School and Summer Programs. We offer community social services.
- 6519 **Senior Citizens United Community Services, Inc.** | 856-456-1121 | <https://www.scucs.org> | Services aimed at improving quality of life, and preventing premature institutionalization for the frail and vulnerable of Southern NJ with the greatest socio-economic need.
- 8224 **Senior Services Center of the Chathams Inc** | 973-635-4565 | <https://www.chathamseiorcenter.org> | Isolation and loneliness in older adults can lead to serious mental health issues. Support our programs and services to help connect, engage, and empower them.

NEW JERSEY EMPLOYEES CHARITABLE CAMPAIGN

- 8225 **Shore Clubhouse, Inc.** | 732-759-1595 | <https://ShoreHouseNJ.org> | Shore House restores hope, independence and self-worth for people living with mental illness by providing access to social education and employment opportunities. At Shore House, isolation is replaced with community, empowerment and a sense of purpose.
- 6685 **Sierra House** | 973-678-3556 | <https://https://www.sierrahouse.org> | Sierra House is committed to improving the prospects of individual achievement for homeless and low to moderate individuals and families through housing, education, and community services.
- 8240 **Sister2Sister, Inc.** | 908-418-7431 | <https://s2scnj.org> | Sister2Sister is the only survivor run organization in NJ providing breast health education to community and financial support to women in treatment - rent, utilities, insurance co-pays, etc.
- 8211 **South Jersey Regional Animal Shelter** | 856-362-5428 | <https://southjerseyregionalanimalshelter.org> | We are committed to bettering the lives of the countless unwanted, mistreated and sick animals of our community and educating citizens in responsible animal care.
- 8241 **Special Olympics NJ** | 609-896-8000 | <https://sonj.org> | Special Olympics New Jersey provided year-round sports training and athletic competition in a variety of Olympic-type sports for children and adults with intellectual disabilities.
- 6587 **Special People United to Ride, Inc.** | 732-224-1367 | <https://www.spuronline.org> | Special People United to Ride, Inc. raises funds to provide assistance to individuals with disabilities in New Jersey through need based scholarship for therapeutic horsemanship.
- 8212 **Stephen Siller Tunnel to Towers Foundation** | 718-987-1931 | <https://www.t2t.org> | We help America's military heroes by providing mortgage-free homes to Gold Star & fallen first responder families, & by building specially-adapted smart homes for catastrophically injured veterans & first responders. We are also committed to eradicating veteran homelessness.
- 6733 **Stockton University Foundation** | 609-652-4753 | <http://stockton.edu> | Supports the philanthropic needs of Stockton University. The Foundation provides leadership and oversight and is responsible for raising, stewarding, and distributing its assets
- 6590 **Sunshine Foundation** | 215-660-7314 | <http://www.sunshinefoundation.org> | Sunshine Foundation is a national children's charity that answers the dreams of chronically ill, seriously ill, physically challenged and abused children ages 3-18.
- 8242 **The Arc/Mercer, Inc.** | 609-406-0181 | <https://www.arcmercer.org> | The Arc Mercer is the leading provider of services to adults with intellectual and developmental disabilities in the area. We provide innovative solutions including community-based housing, vocational training, recreation, and the only IDD mental health facility in the NJ.
- 6591 **The Bridge Academy, Inc.** | 609-960-6539 | <http://bridgeacademynj.org> | The Bridge Academy is a NJ approved independent school for students with language-based learning disabilities such as dyslexia, auditory processing, ADHD and or/dysgraphia.
- 6525 **The College of New Jersey Foundation, Inc.** | 609-771-2393 | <https://https://advancement.tcnj.edu> | The TCNJ Foundation works in concert with the College to raise funds, cultivate relationships, provide stewardship for gifts, and effectively manage funds as a fiduciary
- 8122 **The Institute of Music for Children, Inc.** | 908-469-1211 | <https://www.instituteofmusic.org/> | Each year IMC engages 1,000 urban youth in becoming arts lovers and arts makers, together creating life-changing experiences on our Elizabeth campus.
- 8190 **The Rescue Mission of Trenton** | 609-396-2183 | <https://www.rescuemissionoftrenton.org/> | The Rescue Mission of Trenton feeds those who are hungry, houses those who are homeless, counsels those seeking recovery and provides life-changing opportunities.
- 8136 **The Saints Prison Ministry, Inc.** | 609-845-3197 | <http://www.saintsprisonministry.org> | To present the gospel of Jesus Christ to prisoners through athletics, and to mentor them towards spiritual maturity and a successful transition into family/community.
- 0726 **The Salvation Army** | 908-851-9300 | <https://easternusa.salvationarmy.org/new-jersey/> | The Salvation Army provides help and hope by alleviating hunger, helping disaster survivors, providing housing, breaking the cycle of poverty, and brightening the holidays.
- 6520 **The William Paterson University of NJ Foundation, Inc.** | 973-720-2615 | <https://www.wpunj.edu/giving> | To support the development and growth of William Paterson University of New Jersey by raising funds for scholarships, cultural events, community activities and facilities.
- 6598 **Thomas Edison State University Foundation, Inc.** | 609-984-1588 | <https://www.tesu.edu> | The Thomas Edison State University Foundation is a private, nonprofit corporation, and exists exclusively to support the programs and activities of Thomas Edison State University.

NEW JERSEY EMPLOYEES CHARITABLE CAMPAIGN

- 6557 **Trenton Area Soup Kitchen** | 609-695-5456 | <https://trentonsoupkitchen.org/> | TASK's mission is to feed those who are hungry in the greater Trenton area and offer programs that encourage self-sufficiency and improve quality of life. In 2023, TASK served 495,707 hot, nutritious, made-from-scratch meals through a network of 36 community meal sites.
- 8159 **Turner Syndrome Foundation Inc.** | 732-847-3385 | <https://turnersyndromefoundation.org> | Helping the 1 in 2,000 girls affected by Turner Syndrome achieve a lifetime of possibilities through education, awareness, research, and advocacy.
- 0600 **UNCF United Negro College Fund** | 973-642-1955 | <https://uncf.org/local-offices/newark> | UNCF envisions a nation where all Americans have equal access to a college education that prepares them for rich intellectual lives, competitive and fulfilling careers, engaged citizenship and service to our nation.
- 3800 **United Way of Bucks County** | 215-949-1660 | <https://www.uwbucks.org> | United Way secures resources to help people in Bucks County. These resources improve lives by improving access to quality early education, helping adults with financial stability.
- 1200 **United Way of Central Jersey** | 732-247-3727 | <https://www.uwcj.org> | Provides opportunities for vulnerable children from birth to age 5 and their families, creating a lasting impact through programs in Education, Health and Financial Stability.
- 8137 **United Way of Passaic County** | 973-279-8900 | <https://www.unitedwaypassaic.org> | The United Way of Passaic County address community needs in the areas of health, income and education, by mobilizing the caring power of our community.
- 1147 **UrbanPromise Ministries Inc.** | 856-661-1700 | <http://urbanpromiseusa.org> | UrbanPromise offers after school programs, summer camps, two schools (K-8, 9-12), experiential learning, wellness, youth job training programs, college scholarships and emergency relief.
- 8243 **Waterspirit** | 732-923-9788 | <http://www.waterspirit.org> | Waterspirit is a spiritual ecology nonprofit that informs, inspires, and empowers people of all beliefs to deepen their consciousness of the sacredness of water and the interdependence of all Earth's systems.
- 8244 **Welcome Home Jersey City** | 201-283-8734 | <https://welcomehomerefugees.org/> | Welcome Home is a community based non-profit that provides educational, employment, and material support to refugees, asylees, and asylum-seekers in the Jersey City area.
- 6620 **Womanspace, Inc.** | 609-394-0136 | <https://www.womanspace.org> | Womanspace provides life-saving and life changing services to survivors of domestic and sexual violence in Mercer County, from the emergency need for safety to the long-term need for housing and counseling.
- 6671 **Women Aware, Inc.** | 732-249-4900 | <https://womenaware.net> | Women Aware provides free, confidential services to survivors of domestic violence in Middlesex County: 24-hour multilingual hotline, emergency shelter, legal advocacy, support groups, and children's programs. The agency also operates the Middlesex County Family Justice Center.
- 6601 **Wynona House Inc.** | 973-753-1110 | <https://wynonashouse.org/> | Wynona's House promotes justice and provides healing for child victims of abuse by coordinating investigations, prosecution, treatment, and wraparound services, helping victims become children again.

Index

6503 180 Turning Lives Around, Inc., 43

A

4249 A Kid Again, 12
 0707 A Place For Us, Atlantic County Women's Center DBA AVANZAR, 43
 8217 AARP Foundation, 18
 7050 Abandoned Children's Fund, 26
 1440 Abilities Solutions (Abilities Center of Southern NJ, Inc.), 9
 5006 Abortion Federation, National (NAF), 26
 7051 Abused Children's Fund, Inc., 26
 0423 Accion, 20
 1407 Acenda, 9
 0472 Action Against Hunger, 20
 4267 Action for Healthy Kids, 12
 3451 Adoptions by Cradle of Hope, 26
 2072 Affordable Housing Alliance, 10
 3706 Afrikan Link Initiative, 41
 7163 After a Child Dies - The Compassionate Friends, 26
 3504 Aid For Starving Children, 26
 7100 Aid for Trash Dump Children: The Unforgotten, 27
 7002 AIDS Children's Foundation, 27
 4268 AIDS Programs of the National Minority AIDS Council, 12
 0599 AIDS Research Foundation (amfAR), 12
 3406 Air & Space Forces Association, 27
 3439 Alex's Lemonade Stand Foundation for Childhood Cancer, 27
 0441 Alight (American Refugee Committee), 20
 8226 All Things Are Possible Foundation, 43
 3418 Alley Cat Allies, 27
 4446 Alley Cat Rescue, 27
 4269 Alliance Defending Freedom, 13
 4440 Alopecia Areata Foundation National, 27
 4003 Alpha One Foundation, 13
 0572 ALS Association, 13
 0555 Alzheimer's Association, 13
 3395 Alzheimer's Disease Research, 18
 4421 Alzheimer's Foundation of America, 27
 0574 Alzheimer's New Jersey, 13
 5008 Alzheimer's Research and Prevention Foundation, 27
 3411 Alzheimer's Research Foundation, Fisher Center, 27
 3400 America's Best Charities, 26
 3200 America's Charities, 18
 5012 America's VetDogs - the Veteran's K-9 Corps, Inc., 27
 3401 American Association for Cancer Research, 27
 7164 American Association of Kidney Patients, Inc., 27
 3564 American Battlefield Trust, 27
 4247 American Bible Society, 13
 3912 American Bird Conservancy, 23
 3409 American Breast Cancer Foundation, 27
 4255 American Cancer Society, 13
 3268 American Center for Law and Justice, 18
 8201 American Civil Liberties Union NJ Foundation, 43
 4226 American Council of the Blind, 13
 0503 American Diabetes Association, 13
 4256 American Family Association, Inc., 13
 3917 American Farmland Trust, 23
 3350 American Forests, 23
 4101 American Foundation for Suicide Prevention, 13
 0616 American Heart Association, 13
 3452 American Humane Association, 28
 4423 American Indian College Fund, 28
 4412 American Indian Youth Running Strong, 28
 3417 American Institute for Cancer Research, 28

0440 American Jewish World Service, 20
 7165 American Kennel Club Canine Health Foundation, 28
 0505 American Kidney Fund, 13
 3918 American Littoral Society, 24
 0575 American Liver Foundation, 13
 0576 American Lung Association, 13
 0403 American Near East Refugee Aid (Anera), 20
 0509 American Parkinson Disease Association, 13
 7166 American Whitewater, 28
 4417 Americans Helping Americans, 28
 0434 Americares, 20
 3240 Amnesty International USA, 18
 0453 Amref Health Africa, 20
 8227 AMVETS Service Foundation of New Jersey, 43
 6507 Anchor House Inc, 44
 7157 Angel Canines and Wounded Warriors, 28
 8214 Angels Helping Animals, 44
 7167 Animal Crisis Care, 28
 4506 Animal League America, 28
 7009 Animal Legal Defense Fund, 28
 3430 Animal Rescue Force, Inc., 44
 6669 Animal Sanctuary Society, Inc., 44
 6511 Animal Welfare Association, Inc., 44
 3453 Anxiety and Depression Association of America, 28
 3413 Appalachian Trail Conservancy, 28
 3448 Apraxia Kids, 28
 0701 ARC of Atlantic County, 44
 3686 Arm In Arm, 41
 4257 Arthritis Foundation, 13
 7168 Arthritis National Research Foundation, 28
 6691 ARVF Corp DBA Alicia Rose Victorious Foundation, 44
 0436 Ashoka, 20
 3441 Asian Children's Rescue & Relief Fund, 28
 3541 ASPCA: American Society for the Prevention of Cruelty to Animals, 29
 6692 Associate Alumnae of Douglas College, 44
 8215 Association of NJ Environmental Commissions, 44
 8163 Atlantic City Arts Foundation, 44
 6515 Atlantic City Rescue Mission, 44
 4426 Autism Intervention and Treatment Research -- Organization for Autism Research, 29
 3485 Autism Society of America, 29
 0508 Autism Speaks, 14
 7169 Autoimmune Association, 29

B

3297 Best Friends Animal Society, 18
 3342 Beyond Pesticides, 24
 3562 Bible Believers Fellowship, Inc., 29
 7170 Big Brothers Big Sisters of America, 29
 0709 Big Brothers Big Sisters of Atlantic & Cape May Counties, Inc., 44
 7106 Big Cat Rescue Corp, 29
 4258 Black Women's Health Imperative, 14
 7171 Bladder Cancer Advocacy Network, 29
 7172 Boone and Crockett Club, 29
 3924 Born Free, 24
 7173 Born This Way Foundation, 29
 3431 Boulder Crest Foundation, 29
 2010 Boy Scouts of America Jersey Shore Council, 10
 3700 Boys & Girls Club of Mercer County, 41
 1719 Boys & Girls Club of Monmouth County, 10
 8100 Boys & Girls Clubs of Gloucester County, 44

NEW JERSEY EMPLOYEES CHARITABLE CAMPAIGN

3414 Brain Injury Association of America, 29
 3407 Brain Tumor Association, American (ABTA), 29
 7057 Bread and Water for Africa, Inc., 29
 3444 Breast Cancer Action, 30
 7012 Breast Cancer African American, Sisters Network Inc., 30
 4235 Breast Cancer Research Foundation, Inc., 14
 2590 Bridges Outreach Inc., 42
 3475 Brother's Brother Foundation, 30

C

1125 Camden County College Foundation, 44
 6501 Camden County Hero Scholarship Fund Inc., 44
 7129 Can Do Multiple Sclerosis, 30
 3528 Cancer Care, Inc., 30
 4279 Cancer Hope Network, 14
 0604 Cancer Research America – NFCR, 14
 3596 Cancer Research America – NFCR, 30
 3458 Cancer Research Fund of the Damon Runyon - Walter Winchell Foundation, 30
 0549 Cancer Research Institute, 14
 3602 CancerCare, Inc., 41
 3420 Canine Assistants, 30
 3412 Canine Companions for Independence, 30
 4429 Canines for Disabled Kids, 30
 0404 CARE, 21
 4044 Care Net, 14
 2037 Caregiver Volunteers of Central Jersey, 10
 7174 Carry The Load, 30
 4430 Carter Center, 30
 8202 Cathedral Soup Kitchen Inc., 45
 8169 Catholic Charities , Diocese of Trenton, 45
 8228 Catholic Family & Community Services Diocese of Paterson, 45
 7175 Catholic Legal Immigration Network, Inc., 30
 4483 Catholic Relief Services – USCCB, 30
 3612 Catholic Youth Organization of Mercer County – CYO, 41
 4484 Center for Reproductive Rights, 30
 3677 Central Jersey Legal Services, 41
 0504 Cerebral Palsy Foundation, 14
 3930 CERES, 24
 7035 Certified Humane, 30
 4485 CHADD (Children & Adults with Attention-Deficit/Hyperactivity Disorder), 30
 0500 CHC: Creating Healthier Communities, 12
 7016 Chesapeake Bay Foundation, Inc., 31
 3613 Child Care Connection, 41
 3521 Child Find of America, 31
 4486 Child Foundation, 31
 3472 Child Rescue International, 31
 7060 Child Slavery, Trafficking and Forced Labor Rescue, 31
 0483 ChildFund International, 21
 7176 Childhelp®, 31
 3478 Childhood Brain Tumor Foundation, 31
 3466 Childhood Cancer Research for a Cure, 31
 0444 Children International, 21
 7177 Children of Addiction (NACoA), 31
 7178 Children of Fallen Patriots Foundation, 31
 3421 Children of the Night, 31
 4270 Children's Cancer Assistance Fund, 14
 6719 Children's Hospital of Philadelphia, 45
 7179 Children's House at the Johns Hopkins Hospital, 31
 7019 Children's Hunger Fund, 31
 7180 Children's Hunger Relief Fund, 31
 0618 Children's National Hospital Foundation, 14
 4410 Children's Organ Transplant Association, 31
 0579 Children's Tumor Foundation, 14

8102 ChoiceOne Pregnancy and Sexual Health Resource Centers, 45
 4454 Christian Freedom International, Inc., 31
 4271 Christian Military Fellowship, 14
 4413 Christian Relief Services, 32
 0406 Church World Service, 21
 3905 Clean Water Fund, 24
 0461 Clinton Foundation, 21
 0474 CMMB (Catholic Medical Mission Board), 21
 1701 Collier Youth Services, 10
 0605 Colorectal Cancer Alliance, 14
 3324 Comité De Apoyo A Los Trabajadores Agrícolas (Cata), 24
 6549 Community Action Service Center, 45
 2591 Community Coordinated Child Care of Union County Inc., 42
 6540 Community Food Bank of New Jersey Inc., 45
 2592 Community Food Bank of NJ, 42
 8229 Community Planning & Advocacy Council, 45
 2004 Community Services of Ocean County/Meals on Wheels of Ocean County, 10
 3474 Concerns of Police Survivors, Inc. (COPS), 32
 3916 Conservation International, 24
 3340 Conserve Wildlife Foundation of NJ, 24
 1014 Contact of Burlington County, 45
 6621 CONTACT of Mercer County New Jersey Inc., 45
 4281 Convoy of Hope, 14
 7153 Coral Reef Alliance, 32
 7154 Cornelia de Lange Syndrome Foundation, 32
 4457 Correctional Peace Officers Foundation, 32
 2593 Covenant House, 42
 3566 Covenant House, 32
 4282 Covenant House International, 15
 6526 Crisis Pregnancy Center of South Jersey Inc. DBA Cornerstone Women's Resource Center, 45
 4260 Crohn's & Colitis Foundation, 15
 7062 Cure Alzheimer's Fund, 32
 3226 CureSearch for Children's Cancer, 18
 0516 Cystic Fibrosis Foundation, 15

D

1901 Daughters of Israel, 11
 3429 Days End Farm Horse Rescue, 32
 3476 Deaf Children's Literacy Project, 32
 0515 Deborah Heart & Lung Center, 15
 3331 Defenders of Wildlife, 24
 3922 Delaware Riverkeeper Network, 24
 8171 Delaware Valley Golden Retriever Rescue, Inc., 45
 5017 Delta Research and Educational Foundation, 32
 3584 Diabetes Action Research and Education Foundation, 32
 3260 Diabetes Research & Wellness Foundation, 18
 7155 Dian Fossey Gorilla Fund International, 32
 3519 Direct Relief, 32
 3471 Disabled American Veterans (DAV) Charitable Service Trust, 32
 7181 Disabled Children's Fund, 32
 0442 Doctors Without Borders/Médecins Sans Frontières USA, 15
 7115 Dogs for Better Lives, 33
 4501 Dogs Last Chance, 33
 7063 Dogs On Death Row, 33

E

3300 EarthShare New Jersey, Inc., 23
 6551 EASEL Animal Rescue League, 45
 0454 ECHO, 21
 7182 Educated Choices Program, Inc., 33

NEW JERSEY EMPLOYEES CHARITABLE CAMPAIGN

4434 Elephant Sanctuary, 33
 3432 Elephants, Saving Elephants and Habitat Worldwide, 33
 1239 Elijah's Promise, 46
 2589 Elizabeth Coalition to House the Homeless Inc., 42
 8173 Embrace Kids Foundation, 46
 8174 Emmanuel Cancer Foundation, 46
 3563 Enchanted Peach Children's Foundation, 33
 7145 EOD Warrior Foundation, 33
 0583 Epilepsy Foundation, 15
 0464 Episcopal Relief & Development, 21
 4435 Equine Land Conservation Resource, 33
 8177 Ezer Mizion, 46

F

4452 Fabretto Children's Foundation, 33
 2070 Family Promise of Southern Ocean County, 10
 5013 Farm Animal Rescue, Adoption, and Sanctuary, 33
 7024 Farm Sanctuary Inc., 33
 0401 Feed My Starving Children, 21
 3266 Feed the Children, 18
 0455 FINCA International, Inc., 21
 3467 Fisher House Foundation, 33
 4272 Fisher House Foundation, 15
 3330 Flat Rock Brook Nature Association, 24
 1703 Food Bank of Monmouth and Ocean Counties, Inc., 10
 0482 Food For The Poor, 21
 3287 Fòs Feminista, 18
 8033 Foster and Adoptive Family Services Inc., 46
 7183 Fred Hutchinson Cancer Center, 33
 0484 Free the Slaves, 21
 4494 Freedom Alliance, 33
 8230 Freehold Area OpenDoor, 46
 3576 Friends of Animals, 33
 8143 Friends of Burlington County Animal Shelter, 46
 3397 Friends Of Liberty State Park, 24
 3925 Friends of NJ School of Conservation, 24
 6651 Friends of the Monmouth County Park System, Inc., 46
 1902 Friendship Circle, 11
 6504 Funny Farm Rescue and Sanctuary, 46
 7023 Futures Without Violence, 34

G

1709 Garden State Consumer credit Counseling, Inc. Navicore Solutions, 10
 3486 Gary Sinise Foundation, 34
 7031 Gettysburg Foundation, 34
 8144 Gilda's Club South Jersey, 46
 8231 Girl Scouts of New Jersey Inc., 46
 2011 Girl Scouts of the Jersey Shore, 10
 8208 Girls on the Run New Jersey East, 46
 4212 Glaucoma Research Foundation, 15
 0400 Global Impact, 20
 0452 Global Partners in Care, 21
 7156 Gluten Intolerance Group of North America, 34
 3511 GO2 Foundation for Lung Cancer, 34
 1903 Golda Och Academy (school), 11
 6623 Good Grief, Inc., 46
 1904 Gottesman RTW Academy (school), 11
 2594 Grace Giving and Receiving Assistance for Our Community's Esse, 42
 3310 Greater Newark Conservancy, 24
 4415 Greenpeace Fund, 34
 4108 Guide Dog Foundation for the Blind, Inc., 34

4459 Guide Dogs for the Blind, Inc., 34
 4460 Guide Dogs of America, 34

H

7184 Habitat for Humanity International, 34
 3908 Hackensack Riverkeeper, 24
 4273 Hazelden Betty Ford Foundation, 15
 4490 Hearing Health Foundation, 34
 7065 Heart Disease Aid and Research Fund, 34
 7032 Hearts United for Animals, 34
 0431 Heifer International, 21
 0408 Helen Keller International, 21
 0418 HIAS, 21
 3707 HISPA, 41
 3490 Hispanic Scholarship Fund, 34
 8105 Histiocytosis Association, Inc., 46
 3427 Holt International Children's Services, 34
 6545 Homefront Inc., 47
 3503 Homes for Our Troops, 35
 3708 HomeWorks Trenton, 41
 0478 Hope for Haiti, 21
 7033 Hope For The Warriors®, 35
 3526 HOPE Worldwide, 35
 3457 Hospice Foundation of America, 35
 2065 House of Hope of Ocean County, Inc., 10
 3709 Housing Initiatives of Princeton, 41
 0437 Human Rights Watch, 22
 3208 Humane Society International, 18
 5020 Humane Society of Atlantic County, 35
 0405 Humanity & Inclusion (Handicap International), 22
 1615 Hunterdon Land Trust, 47
 0518 Huntington's Disease Society of America, 15

I

7185 In Defense of Animals, 35
 8182 Integrity, Inc., 47
 8218 Interfaith Health and Support Services of Southern Ocean County, NJ, 47
 4262 International Justice Mission, 15
 0465 International Medical Corps, 22
 4498 International Myeloma Foundation, 35
 0407 International Orthodox Christian Charities, 22
 0429 International Relief Teams, 22
 0447 International Rescue Committee, Inc., 22
 7070 Iraq and Afghanistan Veterans of America, Inc., 35
 0479 Islamic Relief USA, 22
 3902 Isles, Inc., 24
 3449 Israel Guide Dog Center for the Blind, 35
 3306 Izaak Walton League of America, 24

J

4252 JDRF International, 15
 2595 Jefferson Park Ministries, 42
 1905 JESPY House, 11
 1906 Jewish Community Center of Central NJ (JCC Central), 11
 1908 Jewish Educational Center, 12
 3627 Jewish Family & Children's Service of Greater Mercer County (JFCS), 41
 0721 Jewish Family Service of Atlantic County, 47
 2532 Jewish Family Service of Central NJ (JFS Central), 42

NEW JERSEY EMPLOYEES CHARITABLE CAMPAIGN

1909 Jewish Family Service of Central NJ (JFS Central), 12
 1922 Jewish Family Service of MetroWest (JFS), 12
 1603 Jewish Family Service of Somerset, Hunterdon and Warren Counties, 47
 1900 Jewish Federation of Greater MetroWest NJ (UJA), 11
 3000 Jewish Federation of Middlesex and Monmouth Counties, 12
 1912 Jewish Service for the Developmentally Disabled of MetroWest (JSDD), 12
 1913 Jewish Vocational Service of MetroWest (JVS), 12
 3660 John O. Wilson Hamilton Neighborhood Service Center, Inc., 41
 1915 Joseph Kushner Hebrew Academy/Rae Kushner Yeshiva High School, 12
 8232 Junior League of Greater Princeton, Inc., 47

K

8220 K's Kitten Rescue, 47
 3477 K9s For Warriors, 35
 6619 Karen Ann Quinlan Memorial Foundation, 47
 3508 Kidney Cancer Association, 35
 8233 KinderSmile Foundation, Inc., 47
 8221 Kingsway Education Foundation, 47

L

3424 La Jolla Institute for Immunology, 35
 3926 Lake Hopatcong Foundation, 25
 3696 LALDEF -Latin American Legal Defense and Education Fund, 41
 1131 Larc School, 47
 8010 Lawrence Township Education Foundation, 47
 6564 Legal Services of New Jersey, 47
 0523 Leukemia & Lymphoma Society, 15
 3533 Leukemia Clinical Research Foundation, 35
 0609 Leukemia Research Foundation, 15
 2015 Long Beach Island Community Center, 10
 8123 Lunch Break, Inc., 48
 0520 Lupus Foundation of America, 15
 3516 Lutheran World Relief, 35
 4416 Lymphoma Research Foundation, 35

M

3590 MADRE, Inc., 35
 6546 Mainstage Center for the Arts, 48
 3222 Make-A-Wish Foundation of America, 19
 0422 MAP International, 22
 0525 March of Dimes, 15
 7125 Marine Corps -- Law Enforcement Foundation, 35
 3405 Marine Corps Scholarship Foundation, 36
 3553 Marine Mammal Center, 36
 4523 Marine Mammal Stranding Center, 36
 6553 Martin Luther King Youth Center, 48
 6565 Marty's Place Senior Dog Sanctuary, 48
 8108 Masonic Charity Foundation of New Jersey, 48
 7072 Matthew 25: Ministries, 36
 4274 MAZON: A Jewish Response to Hunger, 16
 6555 Meals on Wheels in Greater New Brunswick, 48
 6626 Meals on Wheels Mercer/Trenton/Ewing, 48
 1631 Meals on Wheels of Hunterdon Inc., 48
 0424 Medical Teams International, 22
 0538 Mental Health America (formerly National Mental Health Association), 16
 0526 Mental Health Association in New Jersey, 16

3632 Mercer Street Friends, 41
 0428 Mercy Corps, 22
 4017 Mercy Ships, 16
 4504 Mexican American Legal Defense and Educational Fund, 36
 8109 Middle Earth, 48
 4243 Military Community Youth Ministries, 16
 3593 Military Officers Association of America Scholarship Fund, 36
 3302 Monmouth Conservation Foundation, 25
 7037 Monmouth County SPCA, 36
 1708 Monmouth Day Care Center, 11
 3255 Mothers Against Drunk Driving, 19
 8222 Move For Hunger, Inc., 48
 3233 Multiple Sclerosis Association of America, 19
 7038 Multiple Sclerosis Foundation, 36
 3931 Musconetcong Watershed Association, 25
 0527 Muscular Dystrophy Association, 16

N

3396 NAACP Foundation, 19
 3209 NAACP Legal Defense and Educational Fund, Inc., 19
 0541 NAMI National, 16
 3932 National Audubon Society, 25
 3212 National Black Child Development Institute, 19
 0588 National Bleeding Disorders Foundation, 16
 4275 National Breast Cancer Foundation, Inc., 16
 3482 National CASA/GAL Association for Children, 36
 3530 National Center for Missing & Exploited Children, 36
 3242 National Down Syndrome Society, 19
 3224 National Fallen Firefighters Foundation, 19
 0590 National Kidney Foundation (Headquarters), 16
 0591 National Multiple Sclerosis Society, 16
 3501 National Park Trust, 36
 3352 National Parks Conservation Association, 25
 0536 National Psoriasis Foundation, 16
 3532 National Veterans Legal Services Program, Inc., 36
 3901 National Wildlife Federation, 25
 7186 Native Forward Scholars Fund, 36
 3329 Natural Resources Defense Council, 25
 3303 Nature Conservancy, The, 25
 7187 Navy SEAL Foundation, Inc., 36
 4019 Nazarene Compassionate Ministries, Inc., 16
 4432 NEADS INC, 36
 7188 NephCure Kidney International, 36
 3907 New Jersey Audubon Society, 25
 8235 New Jersey Blind Citizens Association, Inc., 48
 3341 New Jersey Conservation Foundation, 25
 2005 New Jersey Institute for Disabilities, 11
 6579 New Jersey State Museum Foundation, 48
 8130 New Jersey Tree Foundation, 48
 8112 NJ Center for Tourette Syndrome and Associated Disorders Inc., 48
 0514 NMDDP, 16

O

2073 O.C.E.A.N. Inc., 11
 3690 Oaks Integrated Care, 41
 3399 Ocean Conservancy, 25
 2069 Ocean County YMCA, Inc., 11
 6633 Ocean of Love, Inc., 49
 3933 Oceana, 25
 3493 OneSky, 37
 5025 Operation First Response, Inc., 37
 4529 Operation Homefront, 37

NEW JERSEY EMPLOYEES CHARITABLE CAMPAIGN

4283 Operation Restored Warrior Project, 16
0414 Operation Smile, 22
3201 Ovarian Cancer Research Alliance, 19
0413 Oxfam America, 22

P

8172 PAL of Egg Harbor Township, 49
0593 Pancreatic Cancer Action Network, 17
0553 Parkinson's Foundation, 17
3592 Parkinson's Research - The Michael J. Fox Foundation for
Parkinson's Research, 37
0471 Partners In Health, 22
8236 Partners in Learning, Inc., 49
8014 Partnership for the Delaware Estuary, Inc., 49
3544 Paws for Purple Hearts, 37
3507 Paws With A Cause, 37
7189 Paws4vets, 37
3545 Pearl S. Buck International, Inc., 37
7159 Pediatric Brain Tumor Foundation of the United States, Inc., 37
7190 Pediatric Cancer Research Foundation, 37
3698 PEI Kids [Prevention Education Inc.], 41
7191 Pennsylvania Society For The Prevention Of Cruelty To Animals, 37
3347 Peregrine Fund, The, 25
0547 Pet Partners, 17
3436 PETA: People for the Ethical Treatment of Animals, 37
3502 Pets for Patriots, Inc., 37
7192 Pets of the Homeless, 37
3228 PetSmart Charities, Inc., 19
7193 Philippine Children's Shelter, 37
3904 Pinelands Preservation Alliance, 25
4442 PKD Foundation, 37
0410 Plan International USA, 22
7076 Planned Parenthood Federation of America, 38
0539 Prevent Child Abuse New Jersey, 17
8223 Princeton Battlefield Society, 49
8237 Princeton Child Development Institute, 49
3703 Princeton Mobile Food Pantry, 42
3710 Princeton Nursery School, 42
8153 Princeton-Blairstown Center, 49
0427 Prison Fellowship International, 22
4022 Prison Fellowship Ministries, 17
8238 Probation Assn of NJ Education Fund, 49
0416 Project HOPE, 22
7194 Public Employees for Environmental Responsibility, 38
7077 Puppies Behind Bars, 38
7195 Purple Heart Foundation, 38

R

2596 Rahway Community Action Organization Inc., 43
2597 Rahway Day Care Center Inc., 43
3211 Rails-to-Trails Conservancy, 19
7161 Rainforest Trust, 38
7041 Ramapo-Bergen Animal Refuge, 38
6508 Ramapo College Foundation, 49
3551 Rape, Abuse, & Incest National Network (RAINN), 38
3229 Reading Is Fundamental, Inc. (RIF), 19
3550 Reflex Sympathetic Dystrophy Syndrome Association of America,
38
3246 Reproductive Freedom For All Foundation, 19
7196 RESOLVE: The National Infertility Association, 38
3505 Restless Legs Syndrome Foundation, 38
0432 Rise Against Hunger, 22

3572 Rocky Mountain Elk Foundation, 38
3934 Rodale Institute, 25
3711 Rolling Harvest Food Rescue, 42
3241 Ronald McDonald House Charities, 19
6518 Rowan University Foundation, Inc., 49

S

2598 Salvation Army Elizabeth, 43
2599 Salvation Army Plainfield, 43
4232 Samaritan's Purse, 17
8239 Sammy's Hope Inc., 49
3484 Sarcoma Foundation of America, Inc., 38
3344 Save Barnegat Bay, 25
0417 Save the Children, 22
7137 Save the Chimps, 38
3487 Save the Manatee Club, Inc., 38
7197 SAVE, A Friend to Homeless Animals, 38
3915 Scenic America, 25
3587 Scholarship America, 39
8192 Sea Turtle Recovery, Inc., 49
3559 Search Dog Foundation, 39
2523 Second Street Youth Center, Inc., 49
0430 SEE International, 23
4510 Seeing Eye, Inc., 39
4497 Semper Fi & America's Fund, 39
6519 Senior Citizens United Community Services, Inc., 49
8224 Senior Services Center of the Chathams Inc, 49
7044 SEVA Foundation, 39
8225 Shore Clubhouse, Inc., 50
4419 Shriners Hospitals for Children, 39
3349 Sierra Club Foundation, The, 25
6685 Sierra House, 50
8240 Sister2Sister, Inc., 50
4511 Skin Cancer Foundation, 39
4263 Smile Train, 17
7198 Society for Science, 39
4512 Soldiers' Angels, 39
8211 South Jersey Regional Animal Shelter, 50
3567 Southeastern Guide Dogs, Inc., 39
3225 Southern Poverty Law Center, 19
8241 Special Olympics NJ, 50
7138 Special Operations Warrior Foundation, 39
6587 Special People United to Ride, Inc., 50
3928 SPLASH: Delaware River Floating Classroom, 26
0597 St. Jude Children's Research Hospital, 17
3560 Stand Up To Cancer, 39
8212 Stephen Siller Tunnel to Towers Foundation, 50
6733 Stockton University Foundation, 50
7199 The Student Conservation Association, 39
7200 Suicide Awareness Voices of Education, 39
6590 Sunshine Foundation, 50
3910 Surfrider Foundation, 26
4264 Susan G. Komen, 17
3935 Sustainable Jersey, 26

T

2031 Team Randy, Inc., 11
3919 Teaneck Creek Conservancy, 26
8242 The Arc/Mercer, Inc., 50
0513 The Arc of New Jersey, 17
2502 The Arc of Union County, 43
6591 The Bridge Academy, Inc., 50

NEW JERSEY EMPLOYEES CHARITABLE CAMPAIGN

3704 The Children's Home Society of New Jersey, 42
 2003 The Children's Home Society of New Jersey, 11
 6525 The College of New Jersey Foundation, Inc., 50
 3205 The Conservation Fund, 20
 3705 The Father Center of New Jersey, 42
 4284 The Headstrong Project, 17
 3283 The Hole in the Wall Gang Fund, 20
 3214 The Humane Society of the United States, 20
 8122 The Institute of Music for Children, Inc., 50
 4285 The Michael J. Fox Foundation for Parkinson's Research, 17
 4244 The Navigators, 17
 3394 The Obama Foundation, 20
 8190 The Rescue Mission of Trenton, 50
 8136 The Saints Prison Ministry, Inc., 51
 0726 The Salvation Army, 51
 0426 The Salvation Army World Service Office (SAWSO), 23
 4245 The Society of Saint Andrew, Inc., 17
 4286 The Steve Fund, 17
 4265 The V Foundation, 17
 6520 The William Paterson University of NJ Foundation, Inc., 51
 6598 Thomas Edison State University Foundation, Inc., 51
 3398 Thurgood Marshall College Fund, 20
 3565 Thyroid Association, American, 39
 3568 Tigers in America, 39
 4444 TMJ Association, Ltd., 39
 3535 Toys For Tots Foundation, 40
 7140 Travis Manion Foundation, 40
 6557 Trenton Area Soup Kitchen, 51
 7201 Trevor Project, 40
 8159 Turner Syndrome Foundation Inc., 51

U

3547 UCSF Benioff Children's Hospital Foundation, 40
 4009 Unbound, 17
 0600 UNCF United Negro College Fund, 51
 0419 UNICEF USA, 23
 3301 Union of Concerned Scientists, 26
 0450 Unitarian Universalist Service Committee, 23
 4054 United Breast Cancer Foundation, 18
 2528 United Family and Children Society, 43
 0475 United Methodist Committee on Relief (UMCOR), 23
 4471 United States Association for UNHCR, 40
 3800 United Way of Bucks County, 51
 1200 United Way of Central Jersey, 51
 1400 United Way of Gloucester County, 9
 3600 United Way of Greater Mercer County, 40
 2500 United Way of Greater Union County, 42
 2000 United Way of Monmouth and Ocean Counties, 10
 8137 United Way of Passaic County, 51
 2529 Urban League of Union County, 43
 1147 UrbanPromise Ministries Inc., 51
 3712 UrbanPromise Trenton, Inc., 42
 7046 USA Cares Inc., 40

V

3513 Vegan Outreach, 40
 5034 Veteran Tickets Foundation, 40
 4405 Veterans of Foreign Wars Foundation, 40
 2051 Vetgroup, Inc., 11
 2074 Visiting Nurse Association of Central Jersey, 11
 4031 Voice of the Martyrs, Inc., 18
 3713 Volunteers of America Delaware Valley, 42

W

0460 Water For People, 23
 4248 Water Mission, 18
 4472 Water.org, 40
 8243 Waterspirit, 51
 8244 Welcome Home Jersey City, 51
 3351 Wetlands Institute, The, 26
 6620 Womanspace, Inc., 51
 6671 Women Aware, Inc., 51
 0462 Women for Women International, 23
 3295 WOMEN'S WAY, 20
 3328 Woodford Cedar Run Wildlife Refuge, 26
 7202 World Animal Protection, 40
 0433 World Bicycle Relief, 23
 4240 World Emergency Relief / Children's Food Fund, 18
 0480 World Food Program USA, 23
 0439 World Relief Corp of the Natl Assn of Evangelicals, 23
 0425 World Renew, 23
 0421 World Vision, 23
 3322 World Wildlife Fund, 26
 7162 Wounded Warrior Emergency Support Fund, 40
 3213 Wounded Warrior Project, Inc., 20
 3495 Wounded Warriors in Action Foundation, 40
 7203 Wreaths Across America, 40
 6601 Wynona House Inc., 52

X

3929 Xerces Society, 26

Y

7204 Yellowstone Forever, 40
 1920 YM-YWHA of Union County, 12
 2530 YM-YWHA of Union County, 43
 2068 Your Grandmother's Cupboard, 11
 2533 YWCA of Eastern Union County, 43

Z

0558 ZERO Prostate Cancer, 18



**For more information about the
New Jersey Employees Charitable Campaign:**

Susan O'Brien
Campaign Manager
sobrien@njecc.net

PO Box 183,
Middletown, DE 19709
609.477.8306
www.njecc.net



**Credit Union
of New Jersey** + **KASASA**[®]
The freedom to prosper.

The biggest thing since anything.

Make the most of every dollar you save and spend
with our high-yield Kasasa Checking products.

Save it. Spend it. Earn it.

Kasasa Cash[®] Checking

6.00%
APY¹

Kasasa Cash Back[®] Checking

4.00%
CASHBACK²



**Credit Union
of New Jersey**

A Federal Credit Union

★ Trustpilot



Ask us for details or visit

gocunj.com/checking

¹ Account approval, conditions, qualifications, limits, timeframes, enrollments, and other requirements apply. A \$5 deposit is required to open the account. At least 1 Direct Deposit, ACH credit, ACH payment or bill pay transaction(s) is required each monthly qualification cycle. Enrollment and agreement to receive e-statements and at least 12 PIN-based / signature-based debit card purchases are conditions of this account each qualification cycle. When your monthly Kasasa Cash account qualifications are met, daily balances up to and including \$25,000 in your Kasasa Cash account earn a dividend rate of 5.98% resulting in an APY of 6.00%; and daily balances over \$25,000 earn a dividend rate of 0.75% on the portion of the daily balance over \$25,000, resulting in a range from 6.00% to 1.80% APY depending on the account's daily balance. When your Kasasa Cash qualifications are not met, the dividend rate earned on the account's entire daily balance will be 0.01% resulting in an annual percentage yield of 0.01% and ATM withdrawal fees are not refunded. You will receive reimbursements up to an aggregate total of \$25 for nationwide foreign ATM withdrawal fees incurred within your Kasasa Cash account during each monthly qualification cycle when qualifications are met. A foreign ATM fee reimbursement cap of up to \$4.99 per transaction applies when qualifications are met. Limit of one account per member. Terms subject to change at any time. APY effective date 9/01/2023.

² Membership restrictions may apply. Account approval, conditions, qualifications, limits, timeframes, enrollments, logons and other requirements apply. A \$5 deposit is required to open the account. At least 1 Direct Deposit, ACH credit, ACH payment or bill pay transaction(s) is required each monthly qualification cycle. Enrollment and agreement to receive e-statements and at least 12 PIN-based / signature-based debit card purchases are conditions of this account each monthly qualification cycle. When Kasasa Cash Back qualifications are met during a Monthly Qualification Cycle, you will receive 4% cash back on up to a total of \$250.00 PIN-based/signature-based debit card purchases that post and settle to the account during that cycle period. A maximum of \$10.00 cash back payments may be earned per Monthly Qualification Cycle. You will receive reimbursements up to an aggregate total of \$25 for nationwide foreign ATM withdrawal fees incurred within your Kasasa Cash Back account during each monthly qualification cycle when qualifications are met. A foreign ATM fee reimbursement cap of up to \$4.99 per transaction applies when qualifications are met. Limit of one account per member. There are no recurring monthly maintenance charges or fees to open or close this account. Cash back rewards and account qualifications are subject to change at any time. Contact one of our credit union service representatives for additional information and account details.