

1985

2025



# 2025 NJECC RESOURCE / REFERENCE GUIDE BOOK

*Celebrate 40*  
**INVEST IN THE FUTURE**

Over \$53 Million raised since 1985.

[WWW.CHARITIES.ORG/NJECC](http://WWW.CHARITIES.ORG/NJECC)



**NEW JERSEY EMPLOYEES CHARITABLE CAMPAIGN**

Sponsored by:





STATE OF NEW JERSEY  
OFFICE OF THE GOVERNOR  
P.O. BOX 001  
TRENTON  
08625  
(609) 292-6000

PHILIP D. MURPHY  
GOVERNOR

September 2025

Dear Colleagues:

I am extremely proud of the innumerable contributions and generous support for the New Jersey Employee Charitable Campaign (NJECC) made by our State employees. Your continuous support over the years has enriched the lives of countless individuals and families, and I encourage your participation in future campaigns.

New Jersey prides itself on being one of the best places to live, work, and raise a family. It is the contributions of our State and local government employees who make this happen. Your commitment to public service and in your daily roles enriches the lives of many. Your commitment to donate through numerous campaigns to the NJECC has provided millions of dollars to support charitable organizations in our communities throughout the state and across the globe.

Each contribution, and any donation, regardless of the dollar amount, is greatly appreciated and will go directly toward improving the lives of those who need it most. This past year has shown us all how important it is to have a strong, supportive community, and that is what the NJECC is achieving through your efforts.

Thank you all for your continued support.

My very best,

  
Philip D. Murphy  
Governor



**PLEASE NOTE:** All information contained in this codebook was supplied by the various federations and agencies. Errors, omissions, and other problems are the responsibility of the organization submitting the information to this campaign.

# The New Jersey Employees Charitable Campaign

is the only authorized fundraising solicitation of employees in the public workplace on behalf of charitable organizations.

Since its creation, the campaign has raised over

***\$53 Million***

for charitable organizations – local, national, and international.

For more information about the NJECC, visit:  
**[www.NJECC.net](http://www.NJECC.net)**

## NJECC Mission

The New Jersey Employees Charitable Campaign is an annual giving program designed to empower and engage public employees, enhance communities, and create opportunities for all to thrive.

## NJECC Vision

A dynamic and growing charitable giving campaign through which public employees in New Jersey make meaningful investments in charities serving across the state and beyond.

## Table of Contents

Letter from Governor Murphy .....	2
General Information About the NJECC .....	4
What Will My Gift Provide.....	6
How to Fill Out a Pledge Form.....	7
2024 NJECC Award Winners .....	8

## Agencies Listed by Federation:

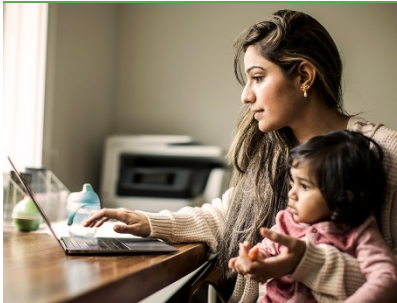
United Way of Monmouth & Ocean Counties .....	9
Jewish Federation of Middlesex & Monmouth Counties .....	10
CHC: Creating Healthier Communities.....	10
America's Charities .....	14
Global Impact.....	16
EarthShare New Jersey.....	19
America's Best Charities .....	22
United Way of Greater Mercer County .....	32
United Way of Gloucester County .....	33
Unaffiliated Agencies .....	35

Index .....	43
-------------	----



# What is the NJECC?

Thanks to legislation that created the New Jersey Employees Charitable Campaign in 1985, employees of state agencies, universities, county government, municipalities and school districts throughout New Jersey enjoy the benefit of giving to many of their favorite charities through an annual workplace giving campaign that features the convenience of payroll deduction.



**Donations exceeded \$676,062  
for charitable organizations in 2024.**

It's not hard to see why employees of the Garden State have responded so enthusiastically to the NJECC:

- It's an easy, effective and cost-efficient way to give to charities.
- Our contributions help improve the quality of life for people in communities locally, across the country and around the world.
- The campaign supports a wide variety of vital health and human services.
- All charities in the campaign must meet strict eligibility criteria.

## How does it work?

Each fall, we get the opportunity to learn about the charities in the NJECC and choose which ones we want to help, and then go online or fill out a paper pledge form to indicate how much we wish to donate to which groups. You can make a one-time gift by check. Or, even better, your gift can be deducted from each paycheck beginning with the first pay period of 2026.

The campaign runs from September through December.

This directory provides information on all the charities in the campaign – a great resource not only for helping you make your choices, but also for finding help if you need it yourself.

## What charities are involved?

One of the great benefits of the NJECC is the wide variety of charities and causes represented – there's something for everyone. They range from small local organizations to large and well-known national and international groups.

Those charities that wish to participate must meet stringent legal requirements and apply each year to participate.

- They are recognized by the IRS as 501(c)(3) nonprofit organizations and registered with the NJ Division of Consumer Affairs, Charities Registration Division
- They provide direct or indirect health and human services.



## Why should I give?

- To help those who are less fortunate through no fault of their own.
- To support a favorite cause or charity on a regular basis.
- It's the right thing to do.
- It will make you feel great.
- It's tax deductible.



## Low Overhead:

15% of the total dollars received are used to cover the administrative cost of the NJECC. This includes the 10% cap as mandated by the New Jersey State Treasury Department and an additional 5% as determined by the charities that participate in the campaign.

## How much should I give?

How much to give is totally up to you. Your personal generosity is no one's business but your own and remains confidential. Still, many of us like to have some idea of what is appropriate to consider as a gift.

FIRST...you might consider participating as a leadership giver – one of the many people who like to do a little more by donating at the leadership giving levels.

SECOND...give what you feel is appropriate for you and your budget – any gift, no matter how large or small, can make all the difference in the world to the charities in this campaign.

## Benefits of payroll deduction

Payroll deduction offers a special opportunity to do more and feel it less.

- It helps to minimize costs while maximizing your contribution.
- You can manage your own philanthropy...you know when deductions start and that you can end them at any time.
- It saves time and takes little effort.

**Learn more and give:**  
[www.njecc.net](http://www.njecc.net)



## Best of all...

by donating a specific amount from each paycheck, you can make a much more significant impact on causes you wish to help.

# EXAMPLES OF WHAT YOUR GIFT CAN BUY

New Jersey Employees Charitable Campaign | September - December 2025

**\$2** per pay period  
= the price of 1 soda

(\$52 total pledge)



Provides a cancer patient with access to two support sessions, free information, and resources.



Provides trash bags and gloves for two stream clean-ups.



Provides an Adventure in a Box for a family.



Buys new shoes and school supplies for students.

**\$5** per pay period  
= the price of 1 Café Latte

(\$130 total pledge)



Helps fund confidential, barrier-free PTSD treatment for veterans and their families.



Provides babies access to physical therapy. Help improve how babies move and process information.



Provides medical supplies for surgeries in underserved areas.



Keeps utilities running for person struggling with recent job loss.

**\$10** per pay period  
= the price of 1 movie matinee

(\$260 total pledge)



Teaches more than 1,200 children how to avoid obesity and live healthy lives through nutrition and exercise.



Supports Litigation efforts to achieve racial justice and equality for all Americans.



Provides workforce readiness skills training and job placement for an unemployed parent.



Provides a basic access ramp for a home.

**\$20** per pay period  
= the price of 1 takeout meal

(\$520 total pledge)



Provides support to patients with critical financial aid for lifesaving treatments they otherwise can't afford.



Plants one tree in an urban low-income area.



Feed 600 rescued animals in need.



Helps organize support groups for individuals affected by mental health challenges.

**\$50** per pay period  
= the price of 1 concert ticket

(\$1,300 total pledge)



Rescues 10 animals from a puppy mill, hoarding, or fighting situation.



Enables a kidney patient with diabetes to purchase supplies to test their blood sugar.



Supports 8 victims of human trafficking with housing, counseling, education, and job training.



Provide vaccinations to prevent deadly diseases in vulnerable communities.



*Thank you*

[WWW.CHARITIES.ORG/NJECC](http://WWW.CHARITIES.ORG/NJECC)



# Ways to Give...2 Ways to Donate:

## (1) Online:

- ✓ payroll deduction
- ✓ credit card

**For your Records:** A copy of your receipt will be emailed to you after you have completed your pledge online.



**A BENEFIT OF PAYROLL DEDUCTION...**  
by donating a smaller amount each month from your paycheck, you can make a larger impact on the causes you wish to help.

## (2) Paper pledge form:

- ✓ payroll deduction or
- ✓ check

**How to fill out your pledge form:**  
It is easy to donate to your favorite charity or charities through the NJECC. Simply fill in the information requested and return to your NJECC coordinators.

**NOTE:**  
The Social security and NJ State Centralized Payroll numbers are **ONLY** required for State Centralized Payroll employees pledging payroll deduction gifts. The NJECC office does not collect, store, or use this information. It is only used by your payroll offices.

### Your NJECC is 3-Parts:

- 1<sup>st</sup> page = payroll copy
- 2<sup>nd</sup> page = NJECC coordinator copy
- 3<sup>rd</sup> page = donor copy (for tax purposes)

**NJECC** NEW JERSEY EMPLOYEES CHARITABLE CAMPAIGN 2025-26 PLEDGE FORM  
Please use a black ink pen when completing this form. Thank you!

Donate via credit card or payroll deduction online! Visit: [www.charities.org/NJECC](http://www.charities.org/NJECC) ☐ Check this box for additional pledge form page only.

**CONTACT INFORMATION**

FIRST NAME: \_\_\_\_\_ MIDDLE INITIAL: \_\_\_\_\_  
LAST NAME: \_\_\_\_\_  
BUSINESS UNIT (The name of your state dept., agency, university, school district, or county): \_\_\_\_\_  
EMPLOYEE ID #: \_\_\_\_\_  
EMAIL: \_\_\_\_\_  
HOME ADDRESS (Optional) Required for acknowledgements (if no email): \_\_\_\_\_ PHONE NUMBER (For use to verify designation): \_\_\_\_\_  
CITY: \_\_\_\_\_ STATE: \_\_\_\_\_ ZIP: \_\_\_\_\_  
Do you authorize your address and gift amount to be released to the designated charities so that you will receive an acknowledgement? ☐ Yes ☐ No

**REQUIRED for Centralized Payroll Employees Only:**  
Your SSN and payroll # entered here will only appear on copy #3 of this form.

NJ STATE CENTRALIZED PAYROLL #: \_\_\_\_\_ SOCIAL SECURITY NUMBER: \_\_\_\_\_

**DESIGNATING YOUR GIFT**

Charity codes are listed in the reference guide code book and at [www.charities.org/NJECC](http://www.charities.org/NJECC). All payroll deductions will be recurring (deducted each pay period throughout the year) starting with the first pay period in January 2026. \*\*STATE CENTRALIZED PAYROLL EMPLOYEES' DEDUCTIONS (ON TOTAL PAY PERIODS) WILL COMMENCE WITH THE THIRD PAY PERIOD.\*\*

**All payroll deductions must be a minimum of \$52 to designate an organization.** Pledges left undesignated or designated to a charity NOT listed, will be considered UNDESIGNATED funds and distributed among all eligible charities in the NJECC. To designate more than 4 charities, please use a second form and check the box on the top right corner of the additional page.

CHARITY CODE	CHARITY NAME	ANNUAL AMOUNT (Total annual check or payroll deduction amount)	AMOUNT PER PAY PERIOD (PAYROLL DEDUCTION ONLY) (Annual total divided by your pay period frequency)	PAYMENT METHOD
_____	_____	\$ _____	\$ _____	<input type="checkbox"/> Payroll Deduction <input type="checkbox"/> Check
_____	_____	\$ _____	\$ _____	<input type="checkbox"/> Payroll Deduction <input type="checkbox"/> Check
_____	_____	\$ _____	\$ _____	<input type="checkbox"/> Payroll Deduction <input type="checkbox"/> Check
_____	_____	\$ _____	\$ _____	<input type="checkbox"/> Payroll Deduction <input type="checkbox"/> Check

**Checks:** Please make your one-time payment payable to: "NJECC"  
Please return completed pledge form, along with any check donations, to your campaign coordinator: P.O. Box 103, Middletown, DE 19709

Total Deduction Amount Per Pay Period: \$ \_\_\_\_\_  
Pay Period Frequency (Your # of pay periods): ☐ 20 ☐ 22 ☐ 24 ☐ 26  
**MY TOTAL PLEDGE \$** \_\_\_\_\_

**AUTHORIZATION** (Sign and date here to authorize pledge and payment method.)  
I hereby authorize any agency of the State of New Jersey by which I may be employed during 2025 to deduct the amount(s) shown above from my pay each period during the calendar year 2026 starting with the first pay period that begins in January and ending with the last pay period that begins in December, and to pay the amounts so deducted to the New Jersey Employees Charitable Campaign. I understand that this authorization may be revoked by me in writing at any time before it expires.

Sign: \_\_\_\_\_ Date: \_\_\_\_\_

**TAX RECEIPT INSTRUCTIONS:** Please keep a copy of this form, along with your final pay stub (for payroll donors) or cancelled check (for check donors) as a tax receipt for your charitable contribution (see your smart phone or other scanning device). Contributions to a qualified 501(c)(3) are tax deductible to the extent of the law. Contributions made to the campaign are confidential.

**DISCLOSURE:** No goods or services are provided in whole or in partial consideration for any contribution made via this pledge form.

**COPY #1 - PAYROLL OFFICE**



# New Jersey Employees Charitable Campaign



## Leading the Way – Top 3 Campaigns in 2024

Top 3 Business Units \$\$ Raised and Top 3 Business Units # of Donors.

---

### Top 3 Business Units \$\$ Raised

- Rutgers University
- Atlantic County Utilities Authority
- NJ Department of Environmental Protection

## 2024 Chairperson's Awards

In recognition of Business Units who increased in **BOTH** donations and in participation.

---

- |   |  |
|---|--|
| <ul style="list-style-type: none"><li>• Atlantic County Government</li><li>• Atlantic County Utilities Authority</li><li>• Burlington County Government</li><li>• Cape May County Technical School District</li><li>• Kean University</li><li>• Monmouth County Government</li><li>• New Jersey Office of Homeland Security &amp; Preparedness</li><li>• NJ Department of Children &amp; Families</li><li>• NJ Department of Community Affairs</li><li>• NJ Department of Corrections</li></ul> | <ul style="list-style-type: none"><li>• NJ Department of Education</li><li>• NJ Department of Health</li><li>• NJ Department of Human Services</li><li>• NJ Department of Law &amp; Public Safety</li><li>• NJ Department of the Treasury</li><li>• NJ Department of Military &amp; Veterans Affairs</li><li>• Port Authority of NY/NJ</li><li>• Rutgers University</li><li>• State Department</li><li>• State of NJ Office of the Secretary of Higher Education</li></ul> |
|---|--|

## NJECC Traveling Trophy Award

Awarded to the agency that earns the most points for their participation in the 2024 NJECC

---

- NJ Department of the Treasury

## 2024 Champions in Giving Awards

In recognition of Business Units who increased either in dollars raised **OR** number of donors.

---

- |  |  |
|--|--|
| <ul style="list-style-type: none"><li>• Atlantic City School District</li><li>• Camden County College</li><li>• Casino Control Commission</li><li>• Galloway Township School District</li><li>• NJ Department of Agriculture</li><li>• NJ Department of Banking &amp; Insurance</li><li>• NJ Department of Environmental Protection</li><li>• NJ Health Care Facilities Financing Authority</li><li>• NJ Higher Education Student Assistance Authority</li></ul> | <ul style="list-style-type: none"><li>• NJ Motor Vehicle Commission</li><li>• NJ Transit</li><li>• NJ Turnpike Authority</li><li>• Northern Burlington County School District</li><li>• Northfield City School District</li><li>• Ocean County Utilities Authority</li><li>• Public Employment Relations Commission</li><li>• State of NJ Office of Information Technology</li><li>• Stockton University</li></ul> |
|--|--|

**How to Use this Guide:**

Listed below are more than 650 charities you can support through this year's NJECC. Press Control+F (PC) or Command+F (Mac) on your keyboard to search this guide for a specific charity. You can also find a list of charities organized by cause categories on page 48. When you're ready to donate, visit [www.charities.org/NJECC](http://www.charities.org/NJECC), where you can also find an alphabetical listing.

## United Way of Monmouth and Ocean Counties

- 2000 **United Way of Monmouth and Ocean Counties** | 732-938-5988 | [www.uwmoc.org](http://www.uwmoc.org) | Improving lives of youth and their families in Monmouth and Ocean Counties by focusing on education, financial stability, health and helping elderly age in place.
- 2072 **Affordable Housing Alliance** | 732-389-2958 | [www.affordablehousingalliance.com](http://www.affordablehousingalliance.com) | To improve the quality of life by developing, preserving affordable housing, providing services for housing affordability with education, helping communities meet their legal housing obligations.
- 2010 **Boy Scouts of America Jersey Shore Council** | 732-349-1037 | [www.jerseyshorescouts.org](http://www.jerseyshorescouts.org) | Develops character, self-confidence, and life skills in youth, building strong family values in a safe, structured, nurturing environment fostering teamwork and leadership.
- 1719 **Boys & Girls Club of Monmouth County** | 732-775-7862 | [www.bgcmonmouth.org](http://www.bgcmonmouth.org) | "We empower all young people to reach their full potential through after-school and summer programming emphasizing academic enrichment, mentorship, life skills-building, and leadership development."
- 2037 **Caregiver Volunteers of Central Jersey** | 732-505-2273 | [www.caregivervolunteers.org](http://www.caregivervolunteers.org) | Vital assistance to the elderly, disabled, Veterans, people with dementia and Caregivers. Services provided by trained volunteers. We are dedicated to bringing independence and joy.
- 1701 **Collier Youth Services** | 732-946-4771 | [www.collieryouthservices.org](http://www.collieryouthservices.org) | Collier Youth Services provides at-risk youth a chance to grow toward their potential in an environment that promotes belonging, dignity and hope.
- 2070 **Family Promise of Southern Ocean County** | 609-994-3317 | [www.familypromisesoc.org](http://www.familypromisesoc.org) | Reducing family homelessness by empowering families to move steadily toward self-sufficiency collaborating with faith based and community organizations by providing shelter, meals, and support services.
- 1703 **Food Bank of Monmouth and Ocean Counties, Inc.** | 732-918-2600 | [www.fulfill.org](http://www.fulfill.org) | Our mission is to alleviate hunger and build food security in Monmouth and Ocean Counties; currently serving 1 and 10 residents in both counties.
- 1709 **Garden State Consumer Credit Counseling, Inc. Navicore Solutions** | 1-800-992-4557 | [www.navicoresolutions.org](http://www.navicoresolutions.org) | We provide compassionate counseling solutions to consumers nationwide in the areas of personal finance, consumer credit, student loans, foreclosure prevention and housing.
- 2011 **Girl Scouts of the Jersey Shore** | (800) 785-2090 | [www.JerseyShoreGirlScouts.org](http://www.JerseyShoreGirlScouts.org) | Serving k-12, Girl Scouts is committed to helping girls become women of courage, confidence and character, who make the world a better place!
- 2065 **House of Hope of Ocean County, Inc.** | 732-341-4447 | [www.houseofhopeocean.org](http://www.houseofhopeocean.org) | The Hope Center provides resources, referrals, food and targeted financial assistance to clients as they work to overcome current life crises.
- 2015 **Long Beach Island Community Center** | 609-494-8861 | [www.stfranciscenterlbi.org](http://www.stfranciscenterlbi.org) | Provides social services, education, and recreation programs to county residents regardless of age, ethnicity, gender, sexual orientation, or religious affiliation.
- 2004 **Meals on Wheels of Ocean County - Community Service** | 609-978-6869 | [www.csimow.org](http://www.csimow.org) | Enabling Ocean County's older adults to maintain the highest level of independence while living in their own homes by providing nutrition and supportive social services.
- 1708 **Monmouth Day Care Center** | (732) 741-4313 | [www.monmouthdaycare.com](http://www.monmouthdaycare.com) | Dedicated to providing a safe, stimulating environment in which children are nurtured and challenged intellectually, emotionally, socially and physically.
- 2005 **New Jersey Institute for Disabilities** | 732-549-6187 | [www.njid.org](http://www.njid.org) | Regional multi-service agency for infants, children and adults with developmental and related disabilities, early interventions, education, therapeutic, residential, vocational programs and assistive technology.
- 2073 **O.C.E.A.N. Inc.** | 732-244-5333 | [www.oceaninc.org](http://www.oceaninc.org) | O.C.E.A.N., Inc. is committed to providing quality comprehensive services that improve the quality of life of individuals and families assisting them in moving towards self-sufficiency.

## NEW JERSEY EMPLOYEES CHARITABLE CAMPAIGN

- 2069 **Ocean County YMCA, Inc.** | Ocean County YMCA, Inc. | Ocean County YMCA, Inc. | The Y is the largest provider of child care and aquatic programs in Ocean County. We focus on youth, families, seniors and the disabled.
- 2031 **Team Randy, Inc.** | 732-914-9500 | [www.teamrandy.com](http://www.teamrandy.com) | An eight week day camp for physically challenged, non-challenged, and financially disadvantaged, intellectually able teens.
- 2003 **The Children's Home Society of New Jersey** | 609-695-6274 | [www.chsofnj.org](http://www.chsofnj.org) | Birth parent counseling, infant foster care, child maternal health, family support, child care, adoption, behavioral counseling, childhood separation and loss counseling, nutrition, and youth development.
- 2051 **Vetgroup, Inc.** | 609-971-7613 | [www.vetgroup.org](http://www.vetgroup.org) | Provide supportive services which will assist veterans in the areas of employment, affordable housing, benefits and transportation to maintain or achieve self-sufficiency.
- 2074 **Visiting Nurse Association of Central Jersey** | Visiting Nurse Association of Central Jersey | VNAHG is dedicated to helping individuals / families achieve their best level of well-being by providing compassionate, coordinated, and innovative care in their homes / communities
- 2068 **Your Grandmother's Cupboard** | 732-240-0441 | [www.yourgrandmotherscupboard.com](http://www.yourgrandmotherscupboard.com) | Grandmother's Cupboard was founded with the mission to provide clothing, shoes, food, toiletries, and other necessities of life to people with special needs.
- 4269 **Alliance Defending Freedom** | (480) 444-0020 | <http://www.adflegal.org> | The world's largest legal organization committed to protecting religious freedom, free speech, marriage and family, parental rights, and the sanctity of life.
- 4003 **ALPHA-1 Foundation, Inc.** | (305) 567-9888 | <https://www.alpha1.org> | The Alpha-1 Foundation is committed to finding a cure for Alpha-1 Antitrypsin Deficiency and to improving the lives of people affected by Alpha-1 worldwide.
- 0402 **ALS United Mid-Atlantic** | (215) 643-5434 | <https://alsmidatlantic.org/> | We help people living with Lou Gehrig's Disease by offering free services to patients and families, and by financially supporting research for a cure.
- 0555 **Alzheimers Disease & Related Disorders Association Inc.** | (800) 272-3900 | <http://www.alz.org> | We lead the way to end Alzheimer's and all other dementia—by accelerating global research, driving risk reduction and early detection, and maximizing quality care and support.
- 0574 **Alzheimer's New Jersey** | (973) 586-4300 | <http://www.alnj.org> | Provides local programs for people in NJ affected by Alzheimer's disease and other dementias. Services: Helpline, support groups, respite assistance, education, advocacy and research support.
- 4247 **American Bible Society** | (212) 408-1200 | <https://www.americanbible.org> | Making the Bible available to everyone in a language and format they can understand and afford, so they may experience its life-changing message.
- 4255 **American Cancer Society** | (800) 227-2345 | <https://www.cancer.org> | Improving lives of people with cancer and their families through advocacy, research, and patient support, working to end cancer as we know it, for everyone.
- 4226 **American Council of the Blind** | (612) 332-3242 | <https://www.acb.org> | Our mission is to increase the independence, security, equality of opportunity, and quality of life for all blind and visually impaired people.
- 0503 **American Diabetes Association** | (800) 342-2383 | <http://www.diabetes.org> | Committed to finding a cure for diabetes, improving care, and providing information and support to help fight diabetes through research, community programs, and advocacy.
- 4256 **American Family Association, Inc.** | (662) 844-5036 | <http://www.afa.net> | Educates and motivates Christians through radio, video, internet and print to act on issues affecting families. Examples: media indecency, pornography, abortion, entertainment, education, and parenting.

## Jewish Federation of Middlesex and Monmouth Counties

- 3000 **Jewish Federation of Middlesex and Monmouth Counties** | 732-588-1800 | [www.jewishheartnj.org](http://www.jewishheartnj.org) | Brings together people, partners and resources fulfilling critical needs in our community by caring for vulnerable, inspiring the next generation and forging connections with Israel.

## CHC: Creating Healthier Communities

- 0500 **CHC: Creating Healthier Communities** | (800) 654-0845 | <http://www.CHCimpact.org> | Building partnerships to address health inequity by fostering trusted community engagement, offering programs and services, and fundraising to support communities where everyone can thrive.



## NEW JERSEY EMPLOYEES CHARITABLE CAMPAIGN

- 0616 **American Heart Association** | (800) 242-8721 | <http://www.heart.org> | We fight heart disease and stroke – the world’s two leading causes of death – through innovative research, public education/training, and changes to public policy.
- 0505 **American Kidney Fund** | (800) 638-8299 | <https://www.kidneyfund.org> | We fight kidney disease on all fronts by addressing education, advocacy, financial assistance, prevention, research; spending 97 cents of every donated dollar on programs.
- 0575 **American Liver Foundation** | (212) 668-1000 | <http://www.liverfoundation.org> | The nation's leading non-profit that facilitates, advocates and promotes education, support and research for prevention, treatment and cure of liver disease.
- 0576 **American Lung Association** | (212) 315-8700 | <http://www.lung.org> | The mission of the American Lung Association is to save lives by improving lung health and preventing lung disease through research, education and advocacy.
- 0509 **American Parkinson Disease Association** | (800) 223-2732 | <http://www.apdaparkinson.org> | Dedicated to funding Parkinson's research, providing comprehensive medical information, extensive public/professional education and support services.
- 0572 **Amyotrophic Lateral Sclerosis Assn.** | (202) 407-8580 | <https://www.als.org> | The ALS Association leads the fight against Lou Gehrig's Disease through research, advocacy and compassionate care and support of people with ALS and their families.
- 0409 **Amyotrophic Lateral Sclerosis Association Greater New York Chapter** | (212) 619-1400 | <http://www.als-ny.org> | ALS United Greater New York provides vital resources across care services, research, and advocacy to support people living with ALS, their caregivers, and families.
- 0513 **Arc of New Jersey** | (732) 246-2525 | <http://www.arcnj.org> | Providing services, support, information and advocacy for children and adults with intellectual and developmental disabilities, and their families, all across New Jersey.
- 4257 **Arthritis Foundation** | (800) 283-7800 | <http://www.arthritis.org> | The Arthritis Foundation pursues a cure for America's #1 cause of disability while championing the fight to conquer arthritis with science, resources, advocacy, and community.
- 0508 **Autism Speaks** | (609) 228-7335 | <http://www.autismspeaks.org> | Promotes lifelong solutions for needs of individuals with autism and families through advocacy/support; increasing ASD acceptance and advancing research into causes and better interventions.
- 0514 **Be The Match Foundation (NMDP)** | (763) 406-8670 | <http://www.nmdp.org> | We cure patients with leukemia and other blood disorders by eliminating racial disparities in healthcare and providing access to life-saving blood stem cell therapy.
- 4235 **Breast Cancer Research Foundation, Inc.** | (646) 497-2600 | <https://www.bcrf.org> | The Breast Cancer Research Foundation is committed to achieving prevention and a cure for breast cancer by advancing the world's most promising research.
- 4279 **Cancer Hope Network** | (908) 879-4039 | <https://www.cancerhopenetwork.org/> | To instill hope in cancer patients and their loved ones through 1:1 peer support from survivors and caregivers who have faced a similar experience.
- 0549 **Cancer Research Institute** | (800) 992-2623 | <http://www.cancerresearch.org> | Cancer Research Institute supports and coordinates scientific and clinical efforts that will lead to the immunological treatment, control, and prevention of cancer.
- 4044 **Care Net** | (800) 518-7909 | <https://www.care-net.org> | Care Net offers compassion, hope, and help to women and men considering abortion by presenting realistic alternatives and Christ-centered support through our life-affirming network.
- 0504 **Cerebral Palsy Foundation** | (212) 520-1686 | <https://www.yourcpf.org> | The Cerebral Palsy Foundation works to transform the lives of people with cerebral palsy (and related disabilities) today through research, innovation and collaboration.
- 0618 **Children's Hospital Foundation** | (301) 565-8500 | <https://childrensnational.org/> | As the nation's children's hospital, the mission of Children's National is to excel in Care, Advocacy, Research and Education.
- 0579 **Children's Tumor Foundation** | (800) 323-7938 | <http://www.ctf.org> | Drives research, expands knowledge, and advances care for those living with neurofibromatosis (NF), a group of genetic conditions causing tumor growth throughout the body.

## NEW JERSEY EMPLOYEES CHARITABLE CAMPAIGN

- 4271 **Christian Military Fellowship** | (303) 761-1959 | <http://www.cmfhq.org> | Supporting America's military and their families worldwide empowering them in their Christian faith, advancing Bible studies, fellowship, mentoring, trauma healing, family support, and encouragement.
- 0605 **Colorectal Cancer Alliance** | (202) 628-0123 | <https://colorectalcaner.org/> | The Alliance provides support for all individuals navigating colorectal cancer, raises awareness of preventive measures; and funds research to end colorectal cancer in our lifetime.
- 4281 **Convoy of Hope** | (417) 851-6275 | <http://www.convoyofhope.org> | An international, faith-based, nonprofit with a mission "To feed the world and eliminate poverty through children's feeding initiatives, community outreaches, disaster response and partner resourcing."
- 0411 **Core Community Organized Relief Effort** | (323) 934-4400 | <https://www.corerresponse.org> | We empower underserved communities affected by crisis. Largely informed and fueled by local hands, we mobilize resources, fill gaps, and develop long-term recovery solutions.
- 4260 **Crohn's & Colitis Foundation** | (180) 093-2242 | <http://www.crohnscolitisfoundation.org> | We are a non-profit, volunteer-fueled organization dedicated to finding cures for Crohn's disease and ulcerative colitis, and improving the quality of life of children and adults affected by these diseases.
- 0516 **Cystic Fibrosis Foundation** | (800) 344-4823 | <http://www.cff.org> | The mission of the Cystic Fibrosis Foundation is to cure cystic fibrosis and provide all people with CF the opportunity to lead full, productive lives.
- 0515 **Deborah Heart & Lung Center** | (609) 893-0100 | <http://www.demanddeborah.org> | Deborah is a global leader in cardiac, pulmonary, and vascular care. Deborah is the only hospital in the USA that has never billed a patient.
- 0442 **Doctors Without Borders USA** | (212) 679-6800 | <https://www.doctorswithoutborders.org> | An independent, international medical humanitarian organization that delivers emergency aid to people affected by armed conflict, epidemics and natural disasters in more than 70 countries.
- 0412 **FAN 4 Kids** | (201) 349-7955 | <https://www.fan4kids.org> | FAN4Kids empowers children and families in underserved communities to embrace healthy eating/active lifestyles, fostering lifelong skills that promote well-being and combat food insecurity.
- 4272 **Fisher House Foundation** | (888) 294-8560 | <https://www.fisherhouse.org> | Fisher Houses provide military families housing close to a loved one during hospitalization for an illness, disease, or injury.
- 0599 **Foundation for AIDS Research** | (800) 392-6327 | <https://www.amfar.org> | Invests in innovative AIDS cure research; advocates increased funding for research/prevention/treatment and protecting the rights of all people affected by HIV/AIDS.
- 4212 **Glaucoma Research Foundation** | (415) 986-3162 | <http://www.glaucoma.org> | Cure glaucoma and restore vision through innovative research.
- 4284 **Headstrong Project Inc.** | (919) 815-0641 | <https://theheadstrongproject.org/> | The Headstrong Project offers confidential, stigma-free PTSD treatment to veterans, service members, and their families. Our goal: help clients "Triumph Over Trauma".
- 0518 **Huntington's Disease Society of America** | (212) 242-1968 | <http://www.hdsa.org> | HDSA is dedicated to improving the lives of people with Huntington's disease and their families through support of research, providing information and resources and education.
- 4262 **International Justice Mission** | (703) 465-5495 | <https://www.ijm.org> | IJM works in 19 countries to rescue and protect people from slavery, violence against women and children, and police abuse of power.
- 4252 **JDRF International** | (800) 533-2873 | <https://www.breakthrough1d.org/> | Breakthrough T1D is the leading global organization funding type 1 diabetes (T1D) research. Our mission is to cure, prevent and treat T1D and its complications.
- 0523 **Leukemia & Lymphoma Society** | (888) 557-7177 | <http://www.lls.org> | The Leukemia & Lymphoma (LLS) mission: Cure leukemia, lymphoma, Hodgkin's disease and myeloma, and improve the quality of life of patients and their families.
- 0609 **Leukemia Research Foundation** | (847) 919-6249 | <https://leukemiarf.org> | The Leukemia Research Foundation's mission is to cure leukemia by funding innovative research, and to support patients and families. With more than \$83M raised in support of this mission, we are on the path to finding a cure – and won't stop until we do.
- 0415 **Lung Cancer Research Foundation** | (212) 588-6420 | <https://lcrf.org> | The Lung Cancer Research Foundation's mission is to improve lung cancer outcomes by funding research for the prevention, diagnosis, treatment and cure of lung cancer.

## NEW JERSEY EMPLOYEES CHARITABLE CAMPAIGN

- 0520 **Lupus Foundation of America** | (202) 349-1155 | <http://www.lupus.org> | LFA is the only national force fighting to solve the cruel mystery of lupus while giving caring support to those who suffer from its impact.
- 0525 **March of Dimes** | (888) 663-4637 | <https://www.marchofdimes.org> | March of Dimes fights for the health of moms and babies. We support research, lead programs, and provide education and advocacy to support every baby.
- 4274 **MAZON: A Jewish Response to Hunger** | (310) 442-0020 | <http://mazon.org> | Founded in 1985, we are a national nonprofit organization working to end hunger among people of all faiths and backgrounds in the US and Israel.
- 0538 **Mental Health America** | (800) 969-6642 | <https://mhanational.org> | Mental Health America is the nation's leading community-based non-profit dedicated to helping all people achieve wellness by living mentally healthier lives.
- 4017 **Mercy Ships** | (903) 939-7000 | <https://www.mercyships.org> | Delivers free world-class healthcare to some of the world's poorest nations while training local surgeons and medical workers, increasing developing African nations' healthcare capacity.
- 4285 **Michael J Fox Foundation for Parkinsons Research** | (800) 708-7644 | <http://www.michaeljfox.org> | The Michael J. Fox Foundation's urgent goal: eliminate Parkinson's disease in our lifetime. MJFF is the largest non-profit funder of PD research.
- 4243 **Military Community Youth Ministries** | (800) 832-9098 | <http://www.mcy.org> | Caring for military families through relational ministry to military teens worldwide. Partnering with Young Life and the local chapel. Where friends, fun and faith connect.
- 0527 **Muscular Dystrophy Association** | (800) 572-1717 | <http://www.mda.org> | MDA's mission is to empower the people we serve to live longer, more independent lives.
- 0541 **NAMI** | (703) 524-7600 | <http://www.nami.org> | NAMI National provides advocacy, education, support and public awareness so that all individuals and families affected by mental illness can build better lives.
- 4258 **National Black Women's Health Project** | (888) 834-8451 | <http://www.bwhi.org> | Black Women's Health Imperative is the first nonprofit organization created to help advance and protect the health and wellness of Black women and girls.
- 4275 **National Breast Cancer Foundation, Inc.** | (972) 248-9200 | <https://www.nationalbreastcancer.org/> | NBCF's mission is Helping Women Now by providing help and inspiring hope to those affected by Breast Cancer through early detection, education and support services.
- 4270 **National Childrens Cancer Society** | (314) 241-1600 | <http://www.thencs.org> | Thousands of children with cancer, internationally, are affected by inadequate or nonexistent medical care. We distribute donated pharmaceuticals and medical supplies in 42 countries.
- 0604 **National Foundation for Cancer Research** | (800) 321-2873 | <https://www.nfcr.org/> | Dedicated to providing scientists the funding they need to make game-changing discoveries in cancer treatments, detection and ultimately, a cure for all types of cancer.
- 0590 **National Kidney Foundation** | (212) 889-2210 | <http://www.kidney.org> | NKF is a lifeline for all people affected by kidney disease. As pioneers of research and innovation, NKF focuses on the whole patient.
- 4268 **National Minority AIDS Council, Inc.** | (202) 997-5598 | <https://www.nmac.org> | NMAC (formerly National Minority AIDS Council) leads with race to urgently fight for health equity and racial justice to end the HIV epidemic in America.
- 0591 **National Multiple Sclerosis Society** | (800) 344-4867 | <http://www.nationalmssociety.org> | Providing programs and services for those affected by multiple sclerosis including financial assistance, education, information and resources, wellness, research, support groups, referrals, and counseling.
- 4019 **Nazarene Compassionate Ministries, Inc.** | (800) 310-6362 | <https://www.ncmi.org> | Challenged by faith to alleviate poverty and suffering, we promote long-term solutions through economic and community development, gifts-in-kind, and disaster relief.
- 0526 **New Jersey Mental Health Association Inc.** | (973) 571-4100 | <http://www.mhanj.org> | MHANJ works to expand access to behavioral health care for children, adults and families through education, peer to peer support services and advocacy.
- 0593 **Pancreatic Cancer Action Network** | (310) 725-0025 | <http://www.pancan.org> | In our urgent mission to save lives, we attack pancreatic cancer on all fronts: research, clinical initiatives, patient services and advocating for patients.
- 0553 **Parkinson's Foundation** | (800) 473-4636 | <https://www.parkinson.org> | The Parkinson's Foundation makes life better for people with Parkinson's by improving care and advancing research toward a cure.



## NEW JERSEY EMPLOYEES CHARITABLE CAMPAIGN

- 0539 **Prevent Child Abuse New Jersey Chapter** | (732) 246-8060 | <http://www.preventchildabuse.nj.org> | Prevent Child Abuse-New Jersey builds a brighter future for children by promoting family wellness, positive parenting, healthy child development and nurturing communities.
- 4022 **Prison Fellowship Ministries** | (800) 206-9764 | <http://www.prisonfellowship.org> | Helps restore those affected by crime and incarceration and strives to make prisons safer and more rehabilitative by supporting prisoners, former prisoners, and their families.
- 4232 **Samaritan's Purse** | (828) 262-1980 | <http://www.samaritanspurse.org> | Christian relief agency, led by Franklin Graham, providing food, medicine, clothing, shelter, and other emergency assistance to victims of war, poverty, disease, and natural disasters.
- 0420 **Scleroderma Foundation** | (800) 722-4673 | <https://scleroderma.org/> | A relentless force in improving the lives of people affected by scleroderma through support, education, and research. Together, we can overcome scleroderma forever.
- 4263 **Smile Train** | (800) 932-9541 | <https://www.smiletrain.org> | We support safe and quality cleft care for children and will continue to do so until every child in need has access to care.
- 4245 **Society of Saint Andrew, Inc.** | (434) 299-5956 | <https://www.endhunger.org> | Our gleaning programs save good produce from going to waste and provide hungry neighbors across the United States with fresh healthy food.
- 0597 **St. Jude Children's Research Hospital** | (800) 822-6344 | <http://www.stjude.org> | Researches, treats and defeats childhood cancer and other life-threatening diseases. Families never receive a bill from St. Jude for treatment, travel, housing or food.
- 4264 **Susan G. Komen Breast Cancer Foundation** | (877) 465-6636 | <https://www.komen.org/community/new-jersey/> | Save lives by meeting the most critical needs of our communities and investing in breakthrough research to prevent and cure breast cancer
- 0435 **The Children's Cancer Cause Inc.** | (202) 552-7392 | <https://www.childrenscancercause.org/> | The Children's Cancer Cause mission is to champion policies and programs that improve the lives of children with cancer and survivors.
- 4286 **The Stephen C. Rose Legacy Foundation** | (401) 249-0044 | <https://www.stevfund.org> | The Steve Fund is dedicated to supporting the mental health and emotional well-being of young people of color.
- 4009 **Unbound** | (913) 384-6500 | <http://www.unbound.org> | Unbound partners with families living in poverty and invests in their dreams. We help young people achieve their educational goals and build better futures.
- 4054 **United Breast Cancer Foundation** | (877) 822-4287 | <http://www.ubcf.org> | Provide financial aid, emotional support, product donations, fund screenings, and education through life-supporting programs. Serving women, men, patients, survivors, families, at-risk, general population.
- 4265 **V Foundation** | (919) 380-9505 | <https://www.v.org> | We fund game-changing research and all-star scientists to accelerate victory over cancer and save lives.
- 4031 **Voice of the Martyrs, Inc.** | (800) 747-0085 | <https://www.persecution.com/> | Serving persecuted Christians in the world's most difficult and dangerous places; bringing hope through persecution response, front-line worker support, and Bible distribution.
- 4248 **Water Missions International** | (843) 769-7395 | <https://www.watermission.org> | Every person deserves access to safe water, no matter where they live. Partnering with Water Mission brings safe water to communities that need it most.
- 4240 **World Emergency Relief** | (909) 593-7140 | <https://www.WER-US.org> | Our focus is to combat hunger, provide medical assistance, improve access to safe water, advocate for equity in education, and respond to natural disasters.
- 0558 **ZERO Prostate Cancer** | (202) 463-9455 | <https://zerocancer.org/> | Mission to end prostate cancer by advancing research, providing support, and creating solutions to achieve health equity to meet the needs of our community.

## America's Charities

- 3200 **America's Charities** | (703) 222-3861 | <https://www.charities.org> | Working to build strong communities. Addressing needs of children, families, communities by helping employers and employees support our member charities' programs.
- 3395 **Alzheimer's Disease Research** | (301) 556-9340 | <https://www.brightfocus.org/ADR> | Alzheimer's Disease Research is designed to provide initial funding for highly innovative experimental research and curative ideas to cure this disease once and for all.

## NEW JERSEY EMPLOYEES CHARITABLE CAMPAIGN

- 3268 **American Center for Law and Justice** | (800) 342-2255 | <http://www.aclj.org> | Specializing in constitutional law, the ACLJ is dedicated to the concept that freedom and democracy are God-given inalienable rights that must be protected.
- 7014 **American Civil Liberties Union Foundation, Inc.** | (212) 549-2500 | <http://www.aclu.org> | America's foremost defender of civil rights and civil liberties, including free speech, voting rights, religious freedom, racial justice, immigrants' rights, reproductive rights, and LGBTQ rights.
- 3240 **Amnesty International USA** | (212) 807-8400 | <http://www.amnestyusa.org> | Our history spans 60+ years and includes a presence in over 150 countries and 10 million supporters. We defend the human rights of people globally.
- 3297 **Best Friends Animal Society** | (435) 644-2001 | <http://www.bestfriends.org> | Working with you- and groups all across the country to stop the killing in our nation's animal shelters. Together, we can Save Them All.
- 3226 **CureSearch for Children's Cancer** | (800) 458-6223 | <https://curesearch.org> | CureSearch funds research projects designed to find new and better therapies for children's cancers and hosts collaborative opportunities for leaders across the pediatric cancer ecosystem.
- 3260 **Diabetes Research & Wellness Foundation** | (202) 454-1606 | <http://www.diabeteswellness.net> | To help find the cure for diabetes and until that goal is achieved, provide the care needed to combat the life-threatening complications of this disease.
- 3266 **Feed the Children** | (405) 942-0228 | <http://www.feedthechildren.org> | In their work around the world, Feed the Children helps hungry kids by providing their families with the food and essentials they need to thrive.
- 3287 **Fòs Feminista** | (212) 248-6400 | <https://www.fosfeminista.org> | Fòs Feminista to advance sexual and reproductive health, rights, and justice across the Global South.
- 3214 **Humane World for Animals (was Humane Society of the United States)** | (202) 452-1100 | <https://www.humaneworld.org/> | Confronting suffering for ALL animals in puppy mills, factory farms, animal testing and other cruel industries. Help us end all animal cruelty.
- 3208 **Humane World for Animals International (was Humane Society International)** | (202) 452-1100 | <https://www.humaneworld.org/> | Global animal welfare organization working to end animal abuse from dog meat farms, wildlife threats, street dog welfare programs, factory farming and more.
- 3222 **Make-A-Wish Foundation of America** | (800) 722-9474 | <http://www.wish.org> | We create life-changing wishes for children with critical illnesses. A wish helps a child replace fear with confidence, sadness with joy and anxiety with hope.
- 3255 **Mothers Against Drunk Driving** | (877) 275-6233 | <http://www.madd.org> | Prevents tragedies through proven prevention strategies and provide supportive services at no charge to victims and survivors.
- 3233 **Multiple Sclerosis Association of America** | (800) 532-7667 | <http://www.MyMSAA.org> | MSAA is a national nonprofit founded in 1970. Dedicated to improving lives through support and direct services to individuals with MS, families, and care partners.
- 3396 **NAACP Empowerment Programs Inc.** | (410) 580-5795 | <http://www.naacp.org> | We envision an inclusive community rooted in liberation where all persons can exercise their civil and human rights without discrimination.
- 3209 **NAACP Legal Defense and Educational Fund, Inc.** | (212) 965-2200 | <http://www.naacpldf.org> | LDF is America's premier legal organization fighting for racial justice. We defend and advance the full dignity and citizenship of Black people in America.
- 3212 **National Black Child Development Institute** | (202) 833-2220 | <http://www.nbcdi.org> | The mission of the National Black Child Development Institute (NBCDI) is to improve the quality of life for Black children and families.
- 3242 **National Down Syndrome Society** | (800) 221-4602 | <http://www.ndss.org> | NDSS empowers individuals with Down syndrome and their families by driving policy change, providing resources, engaging with local communities, and shifting public perceptions.
- 3224 **National Fallen Firefighters Foundation** | (301) 447-1365 | <http://www.firehero.org> | Sponsors Memorial Weekend honoring America's fallen firefighters; Assists their families with scholarships and emotional support programs; Provides training for fire service; Building National Memorial Park
- 3201 **Ovarian Cancer Research Alliance** | (212) 268-1002 | <https://www.ocrahope.org> | OCRA is the leading organization in the world fighting ovarian and all gynecologic cancers on all fronts while supporting patients and their families.
- 3228 **PetSmart Charities, Inc.** | (800) 423-7387 | <http://www.PetSmartCharities.org> | PetSmart Charities believes in a world where communities unite in support of pets together with their families.

## NEW JERSEY EMPLOYEES CHARITABLE CAMPAIGN

- 3211 **Rails to Trails Conservancy** | (202) 331-9696 | <http://www.railstotrails.org> | Converts thousands of miles of unused railroad corridors into public trails for walking, bicycling, hiking, skating, horseback riding, cross-country skiing, wildlife habitats and nature appreciation.
- 3229 **Reading Is Fundamental, Inc. (RIF)** | (877) 743-7323 | <https://www.rif.org> | RIF provides books and literacy support materials to children, educators, families, and literacy volunteers across the country to spark the joy of reading.
- 3246 **Reproductive Freedom For All Foundation (NARAL)** | (202) 973-3000 | <https://reproductivfreedomforallfoundation.org/> | With 4+ million members representing every state, Reproductive Freedom for All is on the front lines organizing and mobilizing to preserve and expand reproductive freedom.
- 3241 **Ronald McDonald House Charities** | (630) 623-7048 | <http://www.rmhc.org> | Ronald McDonald House Charities® (RMHC®), is a non-profit, 501(c)(3) corporation that cares for families when they have children who are ill or injured.
- 3225 **Southern Poverty Law Center** | (888) 414-7752 | <http://www.splcenter.org> | Using litigation, education, and other forms of advocacy, the SPLC works toward making the ideals of equal justice and equal opportunity a reality.
- 3205 **The Conservation Fund** | (703) 525-6300 | <http://www.conservationfund.org> | Conservation should work for everyone—so we create solutions that make environmental AND economic sense. More than 95% of annual spending goes to conservation programs.
- 3394 **The Obama Foundation** | (773) 420-1660 | <http://obama.org/> | Join us in connecting and empowering rising leaders from around the globe with the resources they need to bring change home to their communities.
- 3398 **Thurgood Marshall College Fund** | (202) 507-4851 | <https://www.tmcf.org> | TMCF moves low-resource, high-achieving students attending publicly-supported HBCUs to and through college and into economically sustainable careers, through scholarships, capacity building and career preparation.
- 7015 **USA for UNFPA** | (646) 649-9100 | <https://www.usaforunfpa.org/> | Together, we advocate for the reproductive rights and health of women and girls globally, fundraise for UNFPA's lifesaving programs, and uplift the experiences of women.

- 3213 **Wounded Warrior Project, Inc.** | (877) 832-6997 | <http://www.woundedwarriorproject.org> | Transforms the lives of America's injured post-9/11 military veterans and their families through free programs supporting mental, physical, and financial health, and long-term rehabilitative care.

## Global Impact

- 0400 **Global Impact** | 800-836-4620 | [www.charity.org/give](http://www.charity.org/give) | We build the capacity, efficiency, and generosity needed to fund a better world, generating vital funding for global causes like disaster response and education.
- 0423 **Accion** | 202-393-5113 | [www.accion.org](http://www.accion.org) | Committed to creating a financially inclusive world that empowers people, small businesses, and communities, with a legacy in microfinance and fintech impact investing.
- 0441 **Alight (American Refugee Committee)** | 800-875-7060 | [www.wearealight.org](http://www.wearealight.org) | Building a meaningful life for and with the displaced. Not simply addressing basic needs, but building a life filled with joy, dignity, connection and purpose.
- 0440 **American Jewish World Service** | 800-889-7146 | [www.ajws.org](http://www.ajws.org) | Inspired by the Jewish commitment to justice, we work to realize human rights and end poverty in Africa, Asia, Latin America, and the Caribbean.
- 0434 **Americares** | 800-486-4357 | [www.americares.org](http://www.americares.org) | Americares helps people and communities around the world access health in times of disaster and every day.
- 0453 **Amref Health Africa** | 212-768-2440 | [www.amref.org](http://www.amref.org) | We strengthen healthcare systems in Africa through healthworker training, youth empowerment, and services addressing maternal and child health, WASH, SRHR, disease prevention, and climate change.
- 0436 **Ashoka** | 703-600-8334 | [www.ashoka.org](http://www.ashoka.org) | Ashoka advances an "Everyone a Changemaker" world - where all citizens are powerful and have the changemaking skills to solve complex social problems.
- 0404 **CARE** | 800-422-7385 | [www.care.org](http://www.care.org) | Working around the globe to save lives, defeat poverty, and achieve social justice for nearly 80 years, putting women and girls in the center.
- 0483 **ChildFund International** | 800-776-6767 | [www.childfund.org](http://www.childfund.org) | Helping deprived, excluded and vulnerable children have the capacity to become young adults and leaders who bring lasting and positive change to their communities.



## NEW JERSEY EMPLOYEES CHARITABLE CAMPAIGN

- 0444 **Children International** | 800-888-3089 | [www.children.org](http://www.children.org) | We aim to create a world without poverty where every child, family and community is connected, productive, and thriving, through health, education, empowerment and employment.
- 0406 **Church World Service** | 800-297-1516 | [www.cwsglobal.org](http://www.cwsglobal.org) | A faith-based organization transforming communities around the globe through just and sustainable responses to hunger, poverty, displacement and disaster.
- 0461 **Clinton Foundation** | 646-778-5179 | [www.clintonfoundation.org](http://www.clintonfoundation.org) | We improve lives by working together with partners across the U.S. and worldwide to create economic opportunity, improve public health, and inspire civic engagement.
- 0474 **CMMB (Catholic Medical Mission Board)** | 800-678-5659 | [www.cmmb.org](http://www.cmmb.org) | Inspired by the example of Jesus, CMMB works in partnership globally to deliver locally sustainable, quality health solutions to women, children, and their communities.
- 0201 **Direct Relief** | 805-964-4767 | [www.directrelief.org](http://www.directrelief.org) | Improves the health and lives of people affected by poverty or emergencies - without regard to politics, religion, or ability to pay.
- 0454 **ECHO** | 239-567-3327 | [www.echonet.org](http://www.echonet.org) | Fights world hunger by helping people help themselves. Provides training, information, and seeds to development workers, missionaries, and small-scale farmers working in 190+ countries.
- 0464 **Episcopal Relief & Development** | 855-312-4325 | [www.episcopalrelief.org](http://www.episcopalrelief.org) | Partners with locally-led organizations to advance lasting change in communities impacted by injustice, poverty, disaster and climate change.
- 0401 **Feed My Starving Children** | 763-504-2919 | [www.fmssc.org](http://www.fmssc.org) | Volunteers hand pack scientifically formulated meals for undernourished children, which are distributed to a network of 70+ partners in 60+ countries each.
- 0455 **FINCA International, Inc.** | 202-682-1510 | [www.finca.org](http://www.finca.org) | FINCA ends poverty through sustainable and scalable solutions inspired by the insights and needs of people in the communities where they live and work.
- 0482 **Food For The Poor** | 954-427-2222 | [www.foodforthe poor.org](http://www.foodforthe poor.org) | International relief and development organization based in Coconut Creek, FL dedicated to alleviating poverty and hunger in Latin America & the Caribbean.
- 0484 **Free the Slaves** | 202-580-7660 | [www.freetheslaves.net](http://www.freetheslaves.net) | We change the conditions that allow modern slavery to exist through community-based action. We work with local partners to provide liberation, education, and restoration.
- 0452 **Global Partners in Care** | 574-367-2455 | [www.globalpartnersincare.org](http://www.globalpartnersincare.org) | Improving access to hospice and palliative care worldwide where the need is great and resources are few through collaborative partnerships between US and international organizations.
- 0431 **Heifer International** | 855-948-6437 | [www.heifer.org](http://www.heifer.org) | We are committed to ending hunger and poverty through sustainable agriculture. Empowering women is a key component of our mission; creating brighter futures for families.
- 0408 **Helen Keller International** | 646-472-0349 | [www.helenkellerintl.org](http://www.helenkellerintl.org) | Partners with communities that are striving to overcome longstanding cycles of poverty. Delivers the essential building blocks of good health, sound nutrition and clear vision.
- 0418 **HIAS** | 301-844-7300 | [www.hias.org](http://www.hias.org) | For over 100 years, this organization has been helping refugees rebuild their lives in safety and freedom.
- 0478 **Hope for Haiti** | 239-434-7183 | [www.hopeforhaiti.com](http://www.hopeforhaiti.com) | With experience running poverty alleviation programs since 1989, the organization works to improve the quality of life for the Haitian people, particularly women and children.
- 0437 **Human Rights Watch** | 212-377-9479 | [www.hrw.org](http://www.hrw.org) | Defends the rights of people worldwide. We investigate abuses, expose facts, and pressure those with power to respect rights and secure justice.
- 0405 **Humanity & Inclusion** | 301-891-2138 | [www.hi-us.org](http://www.hi-us.org) | Co-winner of the Nobel Peace Prize, we support persons with disabilities and people in situations of conflict, natural disaster, and poverty in 60 countries.
- 0465 **International Medical Corps** | 800-481-4462 | [www.internationalmedicalcorps.org](http://www.internationalmedicalcorps.org) | Global humanitarian organization saving lives and building self-reliance by providing vital medical care; training healthcare providers; rebuilding clinics; and improving water & sanitation.
- 0407 **International Orthodox Christian Charities** | 667-401-2160 | [www.iocc.org](http://www.iocc.org) | We offer emergency relief and development programs to people in need worldwide, meeting practical needs in the spirit of Christ's love.

## NEW JERSEY EMPLOYEES CHARITABLE CAMPAIGN

- 0429 **International Relief Teams** | 619-284-7979 | [www.irteams.org](http://www.irteams.org) | Alleviates human suffering from poverty, disaster, and neglect, by sending relief supplies, financial support, volunteer teams, and more to where it is needed most.
- 0447 **International Rescue Committee, Inc.** | 855-973-7283 | [www.rescue.org](http://www.rescue.org) | The International Rescue Committee helps people affected by humanitarian crises, including the climate crisis, to survive, recover and rebuild their lives.
- 0479 **Islamic Relief USA** | 855-447-1001 | [www.irusa.org](http://www.irusa.org) | Provides relief and development in a dignified manner regardless of gender, race, or religion, and works to empower individuals in their communities.
- 0422 **MAP International** | 800-225-8550 | [www.map.org](http://www.map.org) | Answering the call to provide health and healing to a world in need, MAP International provides medicine and health supplies to people across the world.
- 0424 **Medical Teams International** | 503-624-1000 | [www.medicalteams.org](http://www.medicalteams.org) | Daring to love like Jesus, we boldly break barriers to health and restore wholeness in a hurting world.
- 0428 **Mercy Corps** | 888-842-0842 | [www.mercycorps.org](http://www.mercycorps.org) | Our mission is to alleviate suffering, poverty and oppression by helping people build secure, productive and just communities.
- 0414 **Operation Smile** | 888-677-6453 | [www.operationsmile.org](http://www.operationsmile.org) | We are a global nonprofit bridging the gap in access to essential surgeries and healthcare, starting with cleft surgery and comprehensive care.
- 0413 **Oxfam America** | 800-776-9326 | [www.oxfamamerica.org](http://www.oxfamamerica.org) | A global organization that fights inequality to end poverty and injustice.
- 0471 **Partners In Health** | 857-880-5600 | [www.pih.org](http://www.pih.org) | Our mission is to provide a preferential option for the poor in health care.
- 0410 **Plan International USA** | 800-556-7918 | [www.planusa.org](http://www.planusa.org) | Plan International works with young people and communities to advance children's rights and equality for girls. Together, we won't stop until we're all equal.
- 0427 **Prison Fellowship International** | 703-481-0000 | [www.pfi.org](http://www.pfi.org) | We transform the lives of prisoners, families and victims through a global ministry network to break the cycle of crime, worldwide, through Jesus' love.
- 0416 **Project HOPE** | 844-349-0188 | [www.projecthope.org](http://www.projecthope.org) | Placing power in the hands of local health care workers to save lives across the globe.
- 0451 **Refugees International** | 800-733-8433 | [www.refugeesinternational.org](http://www.refugeesinternational.org) | Advocates for lifesaving assistance, human rights, and protection for displaced people and employs our expertise to promote independent, nonpartisan solutions to displacement crises.
- 0432 **Rise Against Hunger** | 919-839-0689 | [www.riseagainsthunger.org](http://www.riseagainsthunger.org) | Growing a global movement to end hunger by empowering communities, nourishing lives, and responding to emergencies.
- 0417 **Save the Children** | 800-728-3843 | [www.savethechildren.org](http://www.savethechildren.org) | We work to give children in the U.S. and around the world a healthy start in life, the opportunity to learn and protection from harm.
- 0430 **SEE International** | 877-937-3133 | [www.seeintl.org](http://www.seeintl.org) | Provides eyecare services to break the cycle of hardship that preventable blindness causes, making patients, families, and communities healthier and stronger.
- 0202 **SOS Children's Villages USA** | 888-767-4543 | [www.sos-usa.org](http://www.sos-usa.org) | To ensure that every child belongs to a family and grows up with love, respect, and security across 136 countries, including the United States.
- 0203 **The Center for Victims of Torture** | 320-217-5052 | [www.cvt.org](http://www.cvt.org) | An international nonprofit providing critical mental health support and healing care to refugees and torture survivors, helping them rebuild their lives and restore their hope.
- 0426 **The Salvation Army World Service Office (SAWSO)** | 703-299-5551 | [www.sawso.org](http://www.sawso.org) | We represent the interests of The Salvation Army U.S.A. Territories who work to improve health, economic and spiritual conditions of the vulnerable throughout the world.
- 0419 **UNICEF USA** | 800-367-5437 | [www.unicefusa.org](http://www.unicefusa.org) | Our mission is to relentlessly pursue a more equitable world for every child. UNICEF won't stop until every child is healthy, educated, protected and respected.
- 0450 **Unitarian Universalist Service Committee** | 800-766-5236 | [www.uusc.org](http://www.uusc.org) | We advance human rights and social justice around the world, partnering with those who confront unjust power structures and mobilize to challenge oppressive policies.
- 0475 **United Methodist Committee on Relief (UMCOR)** | 800-862-4246 | [www.umcmission.org/umcor](http://www.umcmission.org/umcor) | UMCOR is the global humanitarian aid and development agency of The United Methodist Church, working in over 80 countries.

## NEW JERSEY EMPLOYEES CHARITABLE CAMPAIGN

- 0460 **Water For People** | 720-488-4590 | [www.waterforpeople.org](http://www.waterforpeople.org) | We exist to promote the development of high-quality drinking water and sanitation services, accessible to all, and sustained by strong communities, businesses, and governments.
- 0462 **Women for Women International** | 202-737-7705 | [www.womenforwomen.org](http://www.womenforwomen.org) | Women for Women International invests where inequality is greatest by helping women who are forgotten — the women survivors of war and conflict.
- 0433 **World Bicycle Relief** | 312-664-3836 | [www.worldbicyclerelief.org](http://www.worldbicyclerelief.org) | We envision a world where bicycles improve healthcare and education outcomes and broaden economic opportunities so individuals and communities can thrive.
- 0480 **World Food Program USA** | 202-627-3939 | [www.wfpusa.org](http://www.wfpusa.org) | To inspire and mobilize people in the United States to support the mission of the U.N. World Food Programme to end hunger.
- 0439 **World Relief** | 800-535-5433 | [www.worldrelief.org](http://www.worldrelief.org) | At World Relief our mission is to empower the local church to serve the most vulnerable.
- 0425 **World Renew** | 800-552-7972 | [www.worldrenew.net](http://www.worldrenew.net) | We join the world's families to change hunger, poverty, and injustice through locally originated community development programs and internationally coordinated disaster response.
- 0421 **World Vision** | 866-859-5437 | [www.worldvision.org](http://www.worldvision.org) | Relief and development organization helping children worldwide by tackling causes of poverty and developing access to clean water, food, health care, education and economic opportunity.
- 3917 **American Farmland Trust** | (202) 331-7300 | [www.farmland.org](http://www.farmland.org) | Working with farmers, landowners, communities, and others, AFT works to advance sound farming practices, protect agricultural land from irresponsible development, and keep farmers on farmland.
- 3350 **American Forests** | 202-737-1944 | [www.americanforests.org](http://www.americanforests.org) | American Forests creates healthy and resilient forests, from cities to wilderness, that deliver essential benefits for climate, people, water and wildlife.
- 3918 **American Littoral Society** | 732-291-0055 | [www.littoralsociety.org](http://www.littoralsociety.org) | We protect and preserve marine life and habitat, defend the coast from harm and empower others to do the same through advocacy, education and conservation.
- 3342 **Beyond Pesticides** | (202) 543-5450 | [www.beyondpesticides.org](http://www.beyondpesticides.org) | Working to protect health and the environment, including air, water, land and food, to lead the transition to a world free of toxic pesticides.
- 3924 **Born Free USA** | (301) 448-1407 | [www.bornfreeusa.org](http://www.bornfreeusa.org) | Works to end the suffering of wild animals in captivity, rescue individual animals in need, protect wildlife, including endangered species, and encourage compassionate conservation globally.
- 0300 **Center for Aquatic Sciences** | 856-365-0352 | [www.aquaticsciences.org](http://www.aquaticsciences.org) | Benefits people and the environment, providing environmental education through youth engagement, immersive programming, and stewardship opportunities to create future champions for ecosystems in our communities.
- 3905 **Clean Water Fund** | (202) 895-0420 | [www.cleanwaterfund.org](http://www.cleanwaterfund.org) | Neighborhood-based action and education programs bringing people, businesses and government together for sensible solutions that protect water and health, prevent pollution, and conserve natural resources.

## EarthShare New Jersey

- 3300 **EarthShare New Jersey, Inc.** | 609-989-1160 | [www.earthsharenj.org](http://www.earthsharenj.org) | Mobilize the people of NJ to protect our air, water, land and wildlife for a cleaner, healthier and safer place to live, work and play.
- 3912 **American Bird Conservancy** | (540) 253-5780 | [www.abcbirds.org](http://www.abcbirds.org) | Protecting native wild birds and their habitats throughout the Americas, through reserve creation, habitat restoration, and threat reduction, leading public/private conservation partnerships to get results.
- 3324 **Comite De Apoyo A Los Trabajadores Agricolas (Cata)** | 856-881-2507 | [www.cata-farmworkers.org](http://www.cata-farmworkers.org) | Organization empowering the migrant community since 1979. Migrant farmworkers and low-wage workers work alongside supporters and other organizations, advocating for social, economic and environmental justice.
- 3916 **Conservation International Foundation** | (703) 341-2400 | [www.conservation.org](http://www.conservation.org) | Building upon a strong foundation of science, partnership and field demonstration, Conservation International empowers societies to responsibly care for nature for the well-being of humanity.

## NEW JERSEY EMPLOYEES CHARITABLE CAMPAIGN

- 3340 **Conserve Wildlife Foundation of NJ** | 609-250-7964 | [www.conservewildlifenj.org](http://www.conservewildlifenj.org) | Works to protect New Jersey's rare and at-risk wildlife and the habitats they depend on through field research, habitat restoration, environmental education, and community engagement.
- 3331 **Defenders of Wildlife** | (800) 385-9712 | [www.defenders.org](http://www.defenders.org) | Working since 1947 to save America's endangered animals and threatened habitats for future generations' benefit through public education, citizen advocacy, legal action and scientific research.
- 3922 **Delaware Riverkeeper Network** | (215) 369-1188 | [www.delawareriverkeeper.org](http://www.delawareriverkeeper.org) | We work throughout the Delaware River Watershed on the issues, actions legislation, policies and decisions that impact the health of our waterways and communities.
- 3330 **Flat Rock Brook Nature Association** | 201-567-1265 | [www.flatrockbrook.org](http://www.flatrockbrook.org) | A 150 acre preserve and education center maintained as a natural environment available to the public for trail walks, nature study and other passive recreation.
- 0301 **Friends for the Abbott Marshlands** | 215-266-9666 | [www.abbottmarshlands.org](http://www.abbottmarshlands.org) | Engages and inspires a diverse community to experience the unique nature and history of the Abbott Marshlands and advocate for its stewardship.
- 3397 **Friends Of Liberty State Park** | 201-792-1993 | [www.folsp.org](http://www.folsp.org) | Our mission is to preserve, protect, improve and promote Liberty State Park, the urban waterfront open space state park behind Lady Liberty and Ellis Island.
- 3925 **Friends of NJ School of Conservation** | 973-948-4646 | [www.friendsofnjsoc.org/](http://www.friendsofnjsoc.org/) | An organization dedicated to environmental stewardship, offering hands-on learning experiences that emphasize conservation, sustainability, and ecological awareness, inspiring and developing future leaders in environmental conservation and leadership
- 3310 **Greater Newark Conservancy** | 973-642-4646 | [www.citybloom.org](http://www.citybloom.org) | Fostering collaboration at the intersection of environmental, food, and racial justice. Working to reverse the history of systemic racism to improve social determinants of health
- 3908 **Hackensack Riverkeeper** | 201-968-0808 | [www.hackensackriverkeeper.org](http://www.hackensackriverkeeper.org) | Promotes clean water, open space protection, habitat restoration, and wildlife conservation through environmental advocacy, education, action and enforcement within our watershed region.
- 3902 **Isles, Inc.** | 609-341-4700 | [www.isles.org](http://www.isles.org) | Community development and environmental organization since 1981. We design and develop effective services that support our mission to foster healthy, sustainable communities in Trenton and beyond
- 3306 **Izaak Walton League of America** | (800) 453-5463 | [www.iwla.org](http://www.iwla.org) | From hunters to hikers, our members protect America's outdoors through community-based conservation education, common-sense public policy, and a commitment to strong outdoor ethics.
- 3926 **Lake Hopatcong Foundation** | 973-663-2500 | [www.lakehopatcongfoundation.org/](http://www.lakehopatcongfoundation.org/) | Dedicated to protecting the environment and enhancing the experience on and around New Jersey's largest lake, for this and future generations.
- 3923 **Land Trust Alliance** | (202) 638-4725 | [www.landtrustalliance.org](http://www.landtrustalliance.org) | The Land Trust Alliance saves the places people need and love by strengthening land conservation across America. We lead and serve 1000 land conservancies nationwide.
- 3302 **Monmouth Conservation Foundation** | 732-671-7000 | [www.monmouthconservation.org](http://www.monmouthconservation.org) | A nonprofit land trust dedicated to conservation and education efforts to preserve Monmouth County's open space, farmland, and natural habitats since 1977.
- 3931 **Musconetcong Watershed Association** | 908-537-7060 | [www.musconetcong.org](http://www.musconetcong.org) | An independent, non-profit organization dedicated to protecting and improving the quality of the Musconetcong Watershed and its waters for people and nature.
- 3932 **National Audubon Society** | 212-979-3196 | [www.audubon.org](http://www.audubon.org) | The mission of the National Audubon Society is to protect birds and the places they live, today and tomorrow.
- 3901 **National Wildlife Federation** | 800-822-9919 | [www.nwf.org](http://www.nwf.org) | Uniting all Americans to ensure wildlife thrive in a rapidly changing world.
- 3329 **Natural Resources Defense Council** | (212) 727-2700 | [www.nrdc.org](http://www.nrdc.org) | NRDC works to safeguard the earth - its people, its plants and animals, and the natural systems on which all life depends.
- 3303 **Nature Conservancy, The** | (703) 841-5300 | [www.nature.org](http://www.nature.org) | The mission of The Nature Conservancy is to conserve the lands and waters on which all life depends.



## NEW JERSEY EMPLOYEES CHARITABLE CAMPAIGN

- 3907 **New Jersey Audubon Society** | 908-204-8998 | [www.njaudubon.org](http://www.njaudubon.org) | Preserving at-risk wildlife and natural lands since 1897, through science-based research, habitat stewardship, educational engagement, and conservation advocacy, while fostering environmental awareness focused on sustainability.
- 3341 **New Jersey Conservation Foundation** | 908-234-1225 | [www.njconservation.org](http://www.njconservation.org) | Since 1960, we have protected New Jersey's land, water, natural resources and wildlife habitat for the benefit of all through advocacy, preservation, stewardship and education.
- 3399 **Ocean Conservancy** | (202) 429-5609 | [www.oceanconservancy.org](http://www.oceanconservancy.org) | Ocean Conservancy informs, inspires and empowers citizens to take action on behalf of the ocean.
- 3347 **Peregrine Fund, The** | (208) 362-3716 | [www.peregrinefund.org](http://www.peregrinefund.org) | Saves eagles, condors, falcons, and other endangered birds through research, breeding, and conservation programs. Helps preserve habitats. Educates children and adults about nature and science.
- 3904 **Pinelands Preservation Alliance** | 609-859-8860 | [www.pinelandsalliance.org](http://www.pinelandsalliance.org) | Protecting 1-million acres of forests, wetlands, fields and streams that make up the Pinelands National Reserve through education, advocacy and grassroots organizing.
- 3934 **Rodale Institute** | (610) 683-1400 | [www.rodaleinstitute.org](http://www.rodaleinstitute.org) | Rodale Institute is dedicated to growing the regenerative organic agriculture movement through rigorous research, farmer training, and education.
- 3344 **Save Barnegat Bay** | 732-830-3600 | [www.savebarnegatbay.org](http://www.savebarnegatbay.org) | Restoring and protecting Barnegat Bay and its ecosystem by being a strong and independent voice throughout the watershed including Ocean and Monmouth Counties
- 3349 **Sierra Club Foundation** | (415) 995-1780 | [www.sierraclubfoundation.org](http://www.sierraclubfoundation.org) | Promotes climate solutions, conservation, and movement building through a powerful combination of strategic philanthropy and grassroots advocacy.
- 0302 **Sourland Conservancy** | 609-309-5155 | [www.sourland.org](http://www.sourland.org) | Protects the Sourland Mountain Region's ecology through stewardship of natural resources and advocacy through effective citizen action.
- 3928 **SPLASH: Delaware River Floating Classroom** | 609-483-5220 | [www.splashclassroom.org/](http://www.splashclassroom.org/) | Protects and preserves the world's ocean, waves and beaches, through a powerful activist network. Activities include: water quality monitoring, grassroots activism and plastic pollution prevention.
- 3910 **Surfrider Foundation** | 949-492-8170 | [www.surfrider.org](http://www.surfrider.org) | Providing municipalities and schools with the tools, training, and incentives to pursue vital sustainability initiatives to build a better world for future generations.
- 3935 **Sustainable Jersey** | 609-771-2831 | [www.sustainablejersey.com](http://www.sustainablejersey.com) | To build awareness of the Delaware River Watershed with exciting, hands-on educational experiences designed for people of all ages
- 3919 **Teaneck Creek Conservancy** | 201-836-2403 | [www.teaneckcreek.org](http://www.teaneckcreek.org) | Member-supported, nonprofit organization dedicated to developing community activism, environmental education, celebrating culture and arts, and carrying on the historical legacy of our watershed.
- 0303 **Tenafly Nature Center** | 201-598-6093 | [www.tenaflynaturecenter.org](http://www.tenaflynaturecenter.org) | A non-profit nature preserve in Bergen County, NJ. Since 1961, TNC fosters appreciation for nature, environmental education, and conservation across ~400 acres of preserved land.
- 3301 **Union of Concerned Scientists** | (800) 666-8276 | [www.ucsusa.org](http://www.ucsusa.org) | Scientists and activists putting independent science to work to fight global warming, reduce nuclear proliferation, promote renewable energy, and make healthy food available for all.
- 3351 **Wetlands Institute, The** | 609-368-1211 | [www.wetlandsinstitute.org](http://www.wetlandsinstitute.org) | Promoting appreciation, understanding and stewardship of wetlands and coastal ecosystems through our programs in research, conservation, and education for more than 50 years
- 3328 **Woodford Cedar Run Wildlife Refuge** | 856-983-3329 | [www.cedarrun.org](http://www.cedarrun.org) | Woodford Cedar Run Wildlife Refuge (Cedar Run) is a 501©(3) non-profit organization dedicated to the preservation of New Jersey's wildlife and habitats through education, conservation, and rehabilitation
- 3322 **World Wildlife Fund** | (202) 293-4800 | [www.worldwildlife.org](http://www.worldwildlife.org) | Global conservation organization striving to create harmony between people and nature by combating climate change, protecting endangered species, preserving wild habitats, and transforming market forces.
- 3929 **Xerces Society** | (855) 232-6639 | [www.xerces.org](http://www.xerces.org) | The Xerces Society for Invertebrate Conservation is an international nonprofit organization that protects the natural world through the conservation of invertebrates and their habitats.

## America's Best Charities

- 3400 **America's Best Charities** | 800 477-0733 | [www.best-charities.org](http://www.best-charities.org) | Feeding the hungry. Sheltering the homeless. Protecting the children. And healing the sick. America's finest independent charities. Working with you to share- the American way.
- 7050 **Abandoned Children's Fund** | 888 884-0567 | [www.abandonedchildrensfund.org](http://www.abandonedchildrensfund.org) | Thousands of innocent orphans, cruelly abandoned: alone, hungry, desperate, terrified victims of disease, war, extreme poverty. Please help us house, feed, love and rehabilitate them.
- 7051 **Abused Children's Fund, Inc.** | 707 483-2939 | [www.abusedchildrensfund.org](http://www.abusedchildrensfund.org) | Thousands of innocent children are tragically hurt every day by emotional, physical and sexual abuse. Help protect and restore through prevention, rehabilitation and God's love.
- 3451 **Adoptions by Cradle of Hope** | 301 587-4400 | [www.cradlehope.org](http://www.cradlehope.org) | Help an abandoned child! We provide adoption services and support to children who need permanent, loving families. Every dollar saves children's lives and provides love!
- 3504 **Aid For Starving Children** | 800 514-3499 | [www.aidforstarvingchildren.org](http://www.aidforstarvingchildren.org) | One child dying of hunger every twelve seconds- over 7,000 a day- must stop! Make a difference. Your actions can help save a child!
- 3406 **Air & Space Forces Association** | 800 727-3337 | [www.afa.org](http://www.afa.org) | Join the Force behind the Force to promote a dominate US Air Force and support Air Force families through professional development, scholarships, and other programs.
- 3439 **Alex's Lemonade Stand Foundation for Childhood Cancer** | 866 333-1213 | [www.AlexsLemonade.org](http://www.AlexsLemonade.org) | A four-year-old cancer patient's frontyard lemonade stand evolved to a nationwide movement to find a cure for pediatric cancer. Every person can make a difference.
- 3418 **Alley Cat Allies** | 240 482-1980 | [www.alleycat.org](http://www.alleycat.org) | Every 15 seconds a healthy cat is killed in a shelter. Our programs help shelters save more cats and kittens, but we need your help.
- 4446 **Alley Cat Rescue** | 301 277-5595 | [www.saveacat.org](http://www.saveacat.org) | Stray, abandoned and feral cats are neglected. Healthy cats in shelters are killed. Your contribution helps us end feline overpopulation and suffering.
- 4421 **Alzheimer's Foundation of America** | 866 232-8484 | [www.alzfdn.org](http://www.alzfdn.org) | Providing programs and services, including caregiver counseling and support from licensed social workers, educational materials, professional training and funding for research.
- 5008 **Alzheimer's Research and Prevention Foundation** | 888 908-5766 | [www.AlzheimersPrevention.org](http://www.AlzheimersPrevention.org) | Help fight Alzheimer's disease and find a cure through research and prevention! Committed to ensuring peak mental performance and optimum brain function throughout our lives.
- 3411 **Alzheimer's Research Foundation, Fisher Center** | 800 ALZ-INFO | [www.ALZinfo.org](http://www.ALZinfo.org) | Unique research into cause, care and cure of Alzheimer's by Nobel Prize winner. Donate to change lives. Bring a cure to 5.4 million Americans.
- 3401 **American Association for Cancer Research** | 866 423-3965 | [www.aacrfoundation.org](http://www.aacrfoundation.org) | We fund groundbreaking scientific cancer research that saves lives. By contributing, you can help speed up the pace of scientific discovery, and fight cancer.
- 7165 **American Association of Kidney Patients, Inc.** | 800 749-2257 | [www.aakp.org](http://www.aakp.org) | Dedicated to improving the lives of kidney patients and their families through education advocacy and the fostering of patient communities.
- 3564 **American Battlefield Trust** | 800 CW-TRUST | [www.CivilWar.org](http://www.CivilWar.org) | Manassas, Gettysburg, Antietam, Fredericksburg: Don't let developers pave over our nation's past. If we don't save America's battlefields now, we risk losing them forever!
- 3409 **American Breast Cancer Foundation** | 410 730-5105 | [www.abcf.org](http://www.abcf.org) | The national non-profit organization, providing uninsured and underserved individuals financial assistance to aid in the early diagnosis, treatment and survival of breast cancer.
- 3452 **American Humane Association** | 866 242-1877 | [www.americanhumane.org](http://www.americanhumane.org) | Protecting millions of children and animals from abuse, neglect and abandonment for 135 years. We lead understanding of the human-animal bond. The abuse must stop!
- 4423 **American Indian College Fund** | 303 426-8900 | [www.collegefund.org](http://www.collegefund.org) | Native Americans account for only 1% of college students. Help us change this statistic through scholarships/program support. Let's re-imagine what's possible for our students.
- 4412 **American Indian Youth Running Strong** | 888 491-9859 | [www.indian-youth.org](http://www.indian-youth.org) | Raising standard of living, self-esteem of Native American children. Providing relief, development to Indian Reservations. Teaching traditional life skills, healthy lifestyles, respect for Mother Earth.

## NEW JERSEY EMPLOYEES CHARITABLE CAMPAIGN

- 3417 **American Institute for Cancer Research** | 800 843-8114 | [www.aicr.org](http://www.aicr.org) | Replacing cancer myths with cancer facts. We're funding innovative research and education to expand understanding of nutrition and cancer. CFC contributions used for research purposes.
- 7211 **American Kennel Club Canine Health Foundation** | 888-682-9696 | [www.akcchf.org](http://www.akcchf.org) | Dedicated to advancing the health of all dogs and their owners by funding scientific research and supporting the dissemination of health information.
- 4417 **Americans Helping Americans** | 888 242-5026 | [www.helping-americans.org](http://www.helping-americans.org) | Fighting American poverty by aiding needy Appalachian and urban Americans; providing low-income families, elderly, and veterans with basic relief, educational support and affordable housing.
- 5012 **America's VetDogs - the Veteran's K-9 Corps, Inc.** | 866 838-3647 | [www.VetDogs.org](http://www.VetDogs.org) | Trains and places guide, service, hearing and PTSD dogs. Transforming lives of disabled veterans, active servicemembers and first responders so they can live without boundaries.
- 7167 **Animal Crisis Care** | 800 440-3277 | [www.redrover.org](http://www.redrover.org) | Animal victims of cruelty, severe neglect and devastating disasters need our help. Together, we can give animals the lifesaving emergency care they deserve.
- 4506 **Animal League America** | 516 883-7900 | [www.AnimalLeague.org](http://www.AnimalLeague.org) | Support the largest no-kill animal rescue and adoption organization in the world. We save the lives of pets through rescue, adoption, spay/neuter, education initiatives.
- 7009 **Animal Legal Defense Fund** | 707 795-2533 | [www.aldf.org](http://www.aldf.org) | Animals need love - and lawyers! Unimaginable acts of cruelty must end. In courtrooms across America, ALDF is winning the case against cruelty!
- 3453 **Anxiety and Depression Association of America** | 240 485-1001 | [www.adaa.org](http://www.adaa.org) | Anxiety disorders, depression, OCD, and PTSD, are real, serious, and treatable. We champion research for a cure and offer educational resources to millions suffering silently.
- 3413 **Appalachian Trail Conservancy** | 304 535-6331 | [www.appalachiantrail.org](http://www.appalachiantrail.org) | Preserve and manage this amazing nature trail. Ensuring that its priceless cultural heritage can be shared and enjoyed today, tomorrow, and for centuries to come.
- 3448 **Apraxia Kids** | 412 343-7102 | [www.apraxia-kids.org](http://www.apraxia-kids.org) | Every child deserves a voice. We're improving the lives of children with apraxia by ensuring each child has their best opportunity to develop speech.
- 7168 **Arthritis National Research Foundation** | 800 588-2873 | [www.curearthritis.org](http://www.curearthritis.org) | We fund research to cure arthritis and develop new treatments for millions of Americans, including 300,000 children, suffering in pain every day.
- 3441 **Asian Children's Rescue & Relief Fund** | 866 523-3133 | [www.AsianChildrensAssist.org](http://www.AsianChildrensAssist.org) | Saving Asian abandoned, orphaned, destitute, and handicapped children by providing hope and opportunity. Reaching their full potential through basic care, corrective surgery, therapy, and training.
- 3541 **ASPCA: American Society for the Prevention of Cruelty to Animals** | 212 876-7700 | [www.aspc.org](http://www.aspc.org) | Staged dog fights to the death. Puppy factories with overcrowded and unsanitary breeding pens. Kittens tortured for amusement. Help stop these acts of animal cruelty.
- 4426 **Autism Intervention and Treatment Research -- Organization for Autism Research** | 866 366-9710 | [www.researchautism.org](http://www.researchautism.org) | Parents of children with autism never stop seeking answers. We're here to provide those answers by funding research that provides practical information on lifelong care.
- 3485 **Autism Society of America** | 800 3-AUTISM | [www.autism-society.org](http://www.autism-society.org) | 1 in 68 children diagnosed with autism--that's nearly 50,000 new families just this year. Help us provide support to those living with autism today.
- 7169 **Autoimmune Association** | 888-856-9433 | [www.autoimmune.org](http://www.autoimmune.org) | Leading in advocacy, awareness, education and research for 100+ autoimmune diseases including rheumatoid arthritis, lupus, Graves', celiac, hashimoto's, psoriasis, Sjogren's, scleroderma and Crohn's disease.
- 7010 **Beyond Celiac** | 844-856-6692 | [www.BeyondCeliac.org](http://www.BeyondCeliac.org) | Celiac disease can lead to cancer, malnourishment, infertility, osteoporosis, life-threatening diseases. 83% of sufferers remain undiagnosed. Support research for improved treatments for a cure.
- 3562 **Bible Believers Fellowship, Inc.** | 516 739-7746 | [www.prisonministry.org](http://www.prisonministry.org) | Jesus Christ Saves Lives! Help our prison ministry reduce crime by promoting Christianity to English and Spanish speaking inmates with literature, videos, counseling, and prayer.
- 7170 **Big Brothers Big Sisters of America** | 813-720-8778 | [www.bbbs.org/](http://www.bbbs.org/) | Big Brothers Big Sisters empowers youth to realize their potential through 1:1 mentorship to build their BIG futures, strengthening communities. Join our mentorship movement today!
- 7106 **Big Cat Rescue Corp** | 813 920-4130 | [www.bigcatrescue.org](http://www.bigcatrescue.org) | Tigers confined to circus wagons. Lions bred for photos then to be shot in cages. Lynx farmed for their fur. Help us save big cats.

## NEW JERSEY EMPLOYEES CHARITABLE CAMPAIGN

- 7171 **Bladder Cancer Advocacy Network** | 888-901-BCAN | [www.bcan.org](http://www.bcan.org) | BCAN was founded in 2005 and is the only national advocacy organization devoted to advancing bladder cancer research and supporting those impacted by the disease.
- 7011 **Bob Woodruff Family Foundation** | 646-341-6864 | [www.bobwoodrufffoundation.org](http://www.bobwoodrufffoundation.org) | We ensure that our nation's veterans, service members, and their families - those who stood for us - have stable and successful futures.
- 7172 **Boone and Crockett Club** | 406 542-1888 | [www.boone-crockett.org](http://www.boone-crockett.org) | Upholding Theodore Roosevelt's vision, we're protecting our nation's most valuable resource - its wildlife. We've been promoting fair-chase in hunting, outdoor ethics and conservation since 1888.
- 7173 **Born This Way Foundation** | 510 499-9595 | [www.bornthisway.foundation](http://www.bornthisway.foundation) | Founded by Lady Gaga, BTWF focuses on modeling healthy conversations about mental health, connecting young people with resources/services, and building kinder and braver communities.
- 3431 **Boulder Crest Foundation** | 540 554-2727 | [www.bouldercrestretreat.org](http://www.bouldercrestretreat.org) | Healing combat heroes by delivering free retreats for wounded warriors, their families, caregivers and Gold Star families with PTSD/TBI in a beautiful rural sanctuary.
- 3414 **Brain Injury Association of America** | 703 761-0750 | [www.BIAUSA.org](http://www.BIAUSA.org) | Brain injury happens anytime, to anyone, anywhere. We provide help, hope, healing for millions of Americans who live with often misdiagnosed and misunderstood brain injury.
- 3407 **Brain Tumor Association, American (ABTA)** | 800 886-2282 | [www.abta.org](http://www.abta.org) | Advancing the understanding and treatment of brain tumors with the goals of improving, extending, and saving the lives of those impacted by brain tumor diagnoses.
- 7057 **Bread and Water for Africa, Inc.** | 888 371-6622 | [www.african-relief.org](http://www.african-relief.org) | Strengthening African initiatives for self-sufficiency through grassroots health, clean water, education, orphanages, vocational training, agriculture, and micro-credit programs focusing on women and children.
- 7012 **Breast Cancer African American, Sisters Network Inc.** | 866 781-1808 | [www.sistersnetworkinc.org](http://www.sistersnetworkinc.org) | Speaking with one voice, we save lives by empowering women through support, education, financial assistance and promoting early detection through free mammography and ultrasound screenings.
- 3475 **Brother's Brother Foundation** | 412 321-3160 | [www.brothersbrother.org](http://www.brothersbrother.org) | Connecting People's Resources with People's Needs: 58 Years, 149 Countries, \$4 billion in books, food, medical supplies, pharmaceuticals. Forbes Magazine "1st in efficiency."
- 7001 **Buddhist Tzu Chi Foundation** | 909-447-7799 | [www.tzuchi.us](http://www.tzuchi.us) | Volunteer-based aid/development humanitarian organization in alignment with the Sustainable Development Goals, providing disaster relief, food security, education, and medical services to disadvantaged populations.
- 7129 **Can Do Multiple Sclerosis** | 800 367-3101 | [www.mscando.org](http://www.mscando.org) | I AM. I CAN. I WILL!™ Your donation transforms, empowers and provides families living with multiple sclerosis to be more than their MS.
- 3528 **Cancer Care, Inc.** | 800 813-HOPE | [www.cancercare.org](http://www.cancercare.org) | Caring for people facing cancer. Supporting patients, children, loved ones, caregivers. We provide help and hope through free counseling, wigs, education, financial assistance.
- 3596 **Cancer Research America - NCFR** | 800 321-CURE | [www.NCFR.org](http://www.NCFR.org) | If you agree that world-class, cutting-edge research is the key to more effective cancer treatments, prevention, and detection - join us now - save lives!
- 3458 **Cancer Research Fund of the Damon Runyon - Walter Winchell Foundation** | 877 7CANCER | [www.damonrunyon.org](http://www.damonrunyon.org) | To accelerate breakthroughs, we provide today's best young scientists with funding to pursue innovative cancer research. 100% of your donation funds cancer research.
- 3412 **Canine Companions for Independence** | 800 572-BARK (2275) | [www.cci.org](http://www.cci.org) | A cold nose and a warm heart! Our companion dogs provide independence, assistance and friendship that transforms the lives of children and adults with disabilities.
- 4429 **Canines for Disabled Kids** | 978 422-5299 | [www.caninesforkids.org](http://www.caninesforkids.org) | Autism silences a child's laugh. Disability halts a child's life. These specially trained service dogs liberate children, promote independence and social awareness, and help families.
- 7174 **Carry The Load** | 214-789-0763 | [www.carrytheload.org](http://www.carrytheload.org) | Carry The Load is dedicated to honoring and celebrating the sacrifices made by our nation's heroes.
- 4430 **Carter Center** | 800 550-3560 | [www.cartercenter.org](http://www.cartercenter.org) | Waging Peace. Fighting Disease. Building Hope. Led by former President Jimmy Carter and Rosalynn Carter, the Center advances human rights and alleviates unnecessary human suffering.



## NEW JERSEY EMPLOYEES CHARITABLE CAMPAIGN

- 7176 **Catholic Legal Immigration Network, Inc.** | 301-565-4800 | [www.cliniclegal.org](http://www.cliniclegal.org) | CLINIC and its 270+ affiliates assist low-income immigrants, reunite families, promote citizenship, help victims of domestic violence, advocate, build capacity, and train legal immigration providers.
- 4483 **Catholic Relief Services - USCCB** | 888 277-7575 | [www.crs.org](http://www.crs.org) | Rushes food, clothing, shelter, water and comfort to God's most vulnerable children effectively and efficiently in times of disaster and provides the means to self-sufficiency.
- 4484 **Center for Reproductive Rights** | 917 637-3600 | [www.reproductiverights.org](http://www.reproductiverights.org) | Promote and defend women's reproductive freedom and health. We use the law in the U.S. and globally to ensure women's dignity, equality, and self-determination.
- 7035 **Certified Humane** | 703 435-3883 | [www.certifiedhumane.org](http://www.certifiedhumane.org) | Dairy cows confined in tie stalls, crated pigs can't root or move, chickens stuffed in cages. Fight cruelty in raising and handling of animals.
- 4485 **CHADD (Children & Adults with Attention-Deficit/Hyperactivity Disorder)** | 301 306-7070 | [www.chadd.org](http://www.chadd.org) | CHADD is the leading national voice providing evidence-based information and resources on ADHD. CHADD receives over 3 million inquiries from parents and adults seeking support.
- 7016 **Chesapeake Bay Foundation, Inc.** | 888 728-3229 | [www.cbf.org](http://www.cbf.org) | America's waters and marine life face toxic pollution, overfishing, urban sprawl. Help realize our vision: safe drinking water, pristine waterways, thriving ecosystems locally and nationwide.
- 3521 **Child Find of America** | 800 I-AM-LOST | [www.childfindofamerica.org](http://www.childfindofamerica.org) | Child kidnapping prevention and location specialists, helping children and devastated parents through free investigation, mediation and publicity. Your gift could bring a missing child home.
- 4486 **Child Foundation** | 503 224-0409 | [www.childfoundation.org](http://www.childfoundation.org) | Save lives, build hope. Education can move a child beyond poverty. Help children remain in school, giving them the tools to reach their full potential.
- 3472 **Child Rescue International** | 800 245-9191 | [www.mwb.org](http://www.mwb.org) | Children abandoned, orphaned, hungry, lost and lonely, living in bleak institutions need hope and love. Your support helps us save and change their lives!
- 7060 **Child Slavery, Trafficking and Forced Labor Rescue** | 202 234-9050 | [www.GoodWeave.org](http://www.GoodWeave.org) | Devoted to the rescue of trafficked and exploited child laborers from carpet looms in Asia, and offering them rehabilitation, counseling, education and a home.
- 3478 **Childhood Brain Tumor Foundation** | 877 217-4166 | [www.childhoodbraintumor.org](http://www.childhoodbraintumor.org) | Where would you turn if your child had a critical brain tumor? We're determined to find a cure and offer hope to parents facing heartbreak.
- 3466 **Childhood Cancer Research for a Cure** | 888 899-BALD | [www.StBaldricks.org](http://www.StBaldricks.org) | Worldwide, a child is diagnosed every 3 minutes. Funding research is a child's best hope for a cure. Help us save lives.
- 7178 **Children of Fallen Patriots Foundation** | 866 917-2373 | [www.fallenpatriots.org](http://www.fallenpatriots.org) | Our mission is to provide college scholarships and educational counseling to children of fallen U.S. service members, making the ultimate sacrifice for freedom.
- 3421 **Children of the Night** | 800 551-1300 | [www.childrenofthenight.org](http://www.childrenofthenight.org) | Rescues America's children from the ravages of prostitution. Providing shelter, hope and new-beginnings. With your support, we can save more. Our children deserve a fighting-chance!
- 3447 **Children's Defense Fund** | 202 628-8787 | [www.childrensdefense.org](http://www.childrensdefense.org) | Protecting children from poverty, abuse and neglect, and ensuring access to quality healthcare. Speaking for vulnerable children who cannot vote, lobby or speak for themselves.
- 3547 **Children's Hospital & Research Center Foundation** | 800 841-4642 | [www.chofoundation.org](http://www.chofoundation.org) | You can help save a child's life. Donations help sick kids with advanced medical treatment and find new cures for childhood cancer and other diseases.
- 7179 **Children's House at Johns Hopkins Hospital Inc** | 410 614-2560 | [www.believeintomorrow.org](http://www.believeintomorrow.org) | Provides a warm "home away from home" for families in the midst of a medical crisis so their critically ill children may focus on healing.
- 7019 **Children's Hunger Fund** | 800 708-7589 | [www.childrenshungerfund.org](http://www.childrenshungerfund.org) | Feeding the hungry at home and abroad. Food, clothing and medicines aid children in impoverished countries and in America's inner-cities.
- 7180 **Children's Hunger Relief Fund** | 707 528-8000 | [www.chrf.org](http://www.chrf.org) | Millions of innocent children needlessly die before age five! Help us provide millions of meals, healthcare, clean water, housing, education, God's love and stop starvation.
- 4410 **Children's Organ Transplant Association** | 800 366-2682 | [www.cota.org](http://www.cota.org) | COTA gives hope to children and young adults who need a life-saving organ transplant by providing fundraising assistance and family support.

## NEW JERSEY EMPLOYEES CHARITABLE CAMPAIGN

- 4454 **Christian Freedom International, Inc.** | 800 323-CARE | [www.christianfreedom.org](http://www.christianfreedom.org) | Help persecuted, repressed, isolated Christians who are suffering for their Faith! We deliver medicine, food, education, Bibles; and report on atrocities occurring world-wide.
- 4413 **Christian Relief Services** | 800 33-RELIEF | [www.christian-relief.org](http://www.christian-relief.org) | Help wipe out poverty and hunger in the USA, including Indian Reservations, Appalachia and overseas, by providing food, water, medicine, education, shelter to children/families.
- 3474 **Concerns of Police Survivors, Inc. (COPS)** | 573 346-4911 | [www.nationalcops.org](http://www.nationalcops.org) | Grief support and resources for surviving families and co-workers of law enforcement officers killed in the line of duty; law enforcement trauma training; public education.
- 7153 **Coral Reef Alliance** | 888-267.2573 | [www.coral.org](http://www.coral.org) | 70% of corals are threatened or gone. The Coral Reef Alliance partners with local communities to save coral reefs and sustain efforts so corals flourish.
- 7154 **Cornelia de Lange Syndrome Foundation** | 800-753-2357 | [www.CdLSusa.org](http://www.CdLSusa.org) | Children born with physical, cognitive and medical challenges. Parents need information, comfort and support. Help us provide free publications, guidance, emotional support and awareness.
- 4457 **Correctional Peace Officers Foundation** | 800 800-2763 | [www.cpopf.org](http://www.cpopf.org) | Nonprofit charity for Correctional Officers and their families, by providing line-of-duty death benefit, and catastrophic assistance in cases of accident or illness.
- 3566 **Covenant House** | 800 388-3888 | [www.covenanthouse.org](http://www.covenanthouse.org) | Give homeless teens a future! We shelter, mentor and job train kids with nowhere else to turn. Fifteen shelters - 60,000 teens yearly need help.
- 7062 **Cure Alzheimer's Fund** | 781 237-3800 | [www.curealz.org](http://www.curealz.org) | Research is the only path to progress. We're funding breakthrough, aggressive research to prevent, slow, reverse and ultimately find a cure for Alzheimer's Disease.
- 3429 **Days End Farm Horse Rescue** | 301 854-5037 | [www.defhr.org](http://www.defhr.org) | Starvation, parasite infestation, deformed hoofs. Caring for abused and neglected horses. Dedicated to ensuring quality care and treatment of horses through intervention, education and outreach.
- 3476 **Deaf Children's Literacy Project** | 800 459-3529 | [www.cuedspeech.org](http://www.cuedspeech.org) | Most deaf children are behind in English language and literacy. Reading opens the door to their future. Give them the power of English to succeed.
- 5017 **Delta Research and Educational Foundation** | 202 347-1337 | [www.deltafoundation.net](http://www.deltafoundation.net) | Promotes research which identifies solutions to issues affecting African American women and their communities through funding and support of charitable programs of Delta Sigma Theta.
- 3584 **Diabetes Action Research and Education Foundation** | 202 333-4520 | [www.diabetes-action.org](http://www.diabetes-action.org) | Funding innovative, promising research to prevent, treat and cure diabetes. 100% of your workplace contributions used for diabetes research and programs. We can conquer diabetes!
- 7155 **Dian Fossey Gorilla Fund International** | 800-851-0203 | [www.gorillafund.org](http://www.gorillafund.org) | The leading nonprofit successfully protecting endangered mountain gorillas and their critical forests in Africa. We provide direct daily monitoring, anti-poaching patrols, scientific studies, community initiatives.
- 3471 **Disabled American Veterans (DAV) Charitable Service Trust** | 877 426-2838 | [cst.dav.org](http://cst.dav.org) | Empowering Veterans To Lead High-Quality Lives With Respect...Prosthetics Research and Devices for Amputees; Traumatic Brain Injury Therapy; Guide/Assistance Dogs; Comfort for Survivors.
- 7181 **Disabled Children's Fund** | 240-929-4281 | [www.disabled-child.org](http://www.disabled-child.org) | Assisting poor, disabled children worldwide with free distribution of specialty wheelchairs, walkers, crutches, rehabilitation equipment and therapy.
- 7115 **Dogs for Better Lives** | 800 990-3647 | [www.dogsfortheblind.org](http://www.dogsfortheblind.org) | Since 1977, Dogs for the Deaf has been rescuing, training and placing dogs from animal shelters to help people with different disabilities, challenges and needs.
- 4501 **Dogs Last Chance** | 310 271-6096 | [www.LCAnimal.org](http://www.LCAnimal.org) | Puppy mills, vivisection/dissection, fur, illegal animal-fighting; Help us end animal abuse! Doing ground breaking undercover investigations to expose animal abusers and promoting cruelty-free lifestyles.
- 7063 **Dogs On Death Row** | 866 574-7726 | [www.dodr.org](http://www.dodr.org) | We rescue dogs facing imminent execution if they do not get interim financial sponsors or foster parents or receive medical treatment required to become adoptable.
- 7182 **Educated Choices Program, Inc.** | 404 806-2294 | [www.ecprogram.org](http://www.ecprogram.org) | Educating for a Better World - We educated students to explore how food choices impact our health, the environment and animals.
- 7003 **Elephant and Whale Protectors** | 202-483-6621 | [www.eia.org](http://www.eia.org) | Endangered species are being slaughtered, forests are being stolen by criminals, and we're rapidly approaching a climate-change tipping point. Help us protect our planet!

## NEW JERSEY EMPLOYEES CHARITABLE CAMPAIGN

- 4434 **Elephant Sanctuary** | 931 796-6500 | [www.elephants.com](http://www.elephants.com) | The nation's largest natural habitat refuge for endangered elephants retired from circuses and zoos. Improving elephant lives through sanctuary, education, research and overseas assistance.
- 3432 **Elephants, Saving Elephants and Habitat Worldwide** | 817 597-0956 | [www.elephantconservation.org](http://www.elephantconservation.org) | Elephants killed for their ivory. Habitat becomes roads, farms and villages. When elephants and humans cross paths, deaths occur. Help protect elephants, habitat and people.
- 7145 **EOD Warrior Foundation** | 850 729-2336 | [www.eodwarriorfoundation.org](http://www.eodwarriorfoundation.org) | Our mission is to improve the quality of life for the EOD family by providing emergency financial relief, scholarship opportunities, physical, social, and emotional support.
- 4452 **Fabretto Children's Foundation** | 703 525-8716 | [www.fabretto.org](http://www.fabretto.org) | Empowering underserved children and families in Nicaragua to reach their full potential, improve their livelihoods, and take advantage of economic opportunity through education and nutrition.
- 5013 **Farm Animal Rescue, Adoption, and Sanctuary** | 530 477-1757 | [www.animalplace.org](http://www.animalplace.org) | Sanctuary and advocacy for farm animals. Last four years, 16,000 animal lives saved and adopted at our 3 facilities. Mission: Compassion for all life.
- 7024 **Farm Sanctuary Inc.** | 607 583-2225 | [www.farmsanctuary.org](http://www.farmsanctuary.org) | Help us protect farm animals from cruelty and abuse, inspire change in the way society views and treats farm animals, and promote compassionate vegan living.
- 3467 **Fisher House Foundation** | 888 294-8560 | [www.fisherhouse.org](http://www.fisherhouse.org) | We build and donate Fisher Houses at military/VA medical centers, support existing houses, help military families in need and award Scholarships for Military Children.
- 7183 **Fred Hutchinson Cancer Center** | 206-667-2745 | [www.fredhutch.org](http://www.fredhutch.org) | Fred Hutch unites comprehensive care and advanced research to provide the cancer treatment options and accelerate discoveries that prevent, treat and defeat cancer and diseases.
- 4494 **Freedom Alliance** | 800 475-6620 | [www.freedomalliance.org](http://www.freedomalliance.org) | Provides college scholarships to children of fallen military heroes, support activities for wounded and deployed troops and their families.
- 3576 **Friends of Animals** | 203 656-1522 | <http://friendsofanimals.org/> | Free animals from cruelty and institutionalized exploitation. Working to stop euthanasia with our spay/neuter programs. Promoting Animal Rights. Promoting vegetarianism. Protecting animals in need!
- 3486 **Gary Sinise Foundation** | 888 708-7757 | [www.garysinisefoundation.org](http://www.garysinisefoundation.org) | Build Smart Homes for severely wounded veterans, lift the military community's spirits with Lt. Dan Band concerts, support first responders and families of the fallen.
- 7031 **Gettysburg Foundation** | 717 338-1243 | [www.gettysburgfoundation.org](http://www.gettysburgfoundation.org) | Working in partnership with Gettysburg National Military Park to preserve and protect the battlefield while providing a quality museum experience.
- 7156 **Gluten Intolerance Group of North America** | 253-833-6655 | [www.gluten.org](http://www.gluten.org) | Gluten can cause long-term, life-threatening health hazards. Monitoring of food supply is critical. Help to educate and audit food companies for the gluten-free consumer's safety.
- 3511 **GO2 Foundation for Lung Cancer** | 650 598-2857 | [www.lungcancerfoundation.org](http://www.lungcancerfoundation.org) | The #1 cancer killer is largely ignored, underfunded, and under-researched. Join our crusade to eradicate lung cancer through aggressive research, early detection, treatment, and awareness.
- 4415 **Greenpeace Fund** | 800 722-6995 | [www.greenpeacefund.org](http://www.greenpeacefund.org) | An independent, campaigning organization that uses research and public education to expose global environmental problems, and promote solutions essential to a green and peaceful future.
- 4108 **Guide Dog Foundation for the Blind, Inc.** | 800 548-4337 | [www.GuideDog.org](http://www.GuideDog.org) | Using innovative training methods, trains guide and service dogs to restore independence and mobility, empowering people with disabilities to live without boundaries.
- 4459 **Guide Dogs for the Blind, Inc.** | 800 295-4050 | [www.guidedogs.com](http://www.guidedogs.com) | Providing safety, independence and companionship to the blind and visually impaired by partnering them with exceptional guide dogs throughout their lifetime.
- 4460 **Guide Dogs of America** | 800 459-4843 | <http://www.guidedogsofamerica.org> | Every seven minutes an American loses their sight permanently. Our free guide dogs help these individuals pursue their goal of independence with confidence and dignity.

## NEW JERSEY EMPLOYEES CHARITABLE CAMPAIGN

- 7184 **Habitat for Humanity International** | 800 HABITAT | [www.habitat.org](http://www.habitat.org) | We partner with families globally to strengthen communities, build or improve homes and advocate for everyone's right to live in safe, affordable housing.
- 4490 **Hearing Health Foundation** | 212 257-6140 | [www.hhf.org](http://www.hhf.org) | Hearing Health Foundation's mission is to prevent and cure hearing loss and tinnitus through groundbreaking research and to promote hearing health.
- 7065 **Heart Disease Aid and Research Fund** | 800 759-3004 | [www.heart-research.org](http://www.heart-research.org) | Provides research grants, medical and humanitarian supplies to hospitals. Provides heart disease educational material to patients and families. Curing begins with a caring heart!
- 7032 **Hearts United for Animals** | 402 274-3679 | [www.hua.org](http://www.hua.org) | National No-kill shelter and sanctuary, financial assistance for family pets needing veterinary care, providing shelter for pets of domestic abuse families, National Anti-Puppy Mill Campaign.
- 3490 **Hispanic Scholarship Fund** | 877 HSF-INFO | [www.hsf.net](http://www.hsf.net) | HSF empowers Latino families with the knowledge and resources to successfully complete higher education while providing scholarships and support services to exceptional Hispanic American students.
- 3427 **Holt International Children's Services** | 888 355-4658 | [www.holtinternational.org](http://www.holtinternational.org) | We help struggling families care for their children, and unite orphaned and abandoned children with adoptive families. Because every child deserves a loving, secure home.
- 3503 **Homes for Our Troops** | 866 787-6677 | [www.hfotusa.org](http://www.hfotusa.org) | We build mortgage-free, specially adapted homes nationwide for severely injured Veterans Post-9/11, to enable them to rebuild their lives.
- 7033 **Hope For The Warriors®** | 877 246-7349 | [www.hopeforthewarriors.org](http://www.hopeforthewarriors.org) | Restore self, family and hope! Our programs support employment and education, clinical health and wellness, sports and recreation, build community and military relations and more.
- 3526 **HOPE worldwide** | 610 254-8800 | [www.hopeww.org](http://www.hopeww.org) | Sick mothers in Cambodia. Orphans in Kenyan slums. Flood victims in the Philippines. Undereducated youth in the U.S. Help us bring them hope.
- 3457 **Hospice Foundation of America** | 800 854-3402 | [www.hospicefoundation.org](http://www.hospicefoundation.org) | Supporting individuals through life-ending illness and assisting families /caregivers with grief and loss. We emphasize hospice and palliative care while providing public and professional education.
- 5020 **Humane Society of Atlantic County** | 609 347-2487 | [www.HumaneSocietyAC.org](http://www.HumaneSocietyAC.org) | We provide shelter and affordable veterinary care for homeless and owned animals and provide programs to enable people in need to keep their family pets.
- 7209 **In Defense of Animals** | 415 448-0048 | [www.idausa.org](http://www.idausa.org) | We honor the rights and interests of all animals. We advocate for changes in laws, advance rights, improved welfare and environmental protection.
- 4498 **International Myeloma Foundation** | 818 487-7455 | [www.myeloma.org](http://www.myeloma.org) | The International Myeloma Foundation (IMF) is dedicated to improving the quality of life of myeloma patients while working toward prevention and a cure.
- 7070 **Iraq and Afghanistan Veterans of America, Inc.** | 212 982-9699 | [www.iava.org](http://www.iava.org) | Help address critical issues facing Iraq and Afghanistan veterans and their families, including mental health injuries, Traumatic Brain Injury, high suicide rates and staggering unemployment.
- 3449 **Israel Guide Dog Center for the Blind** | 215 343-9100 | [www.israelguidedog.org](http://www.israelguidedog.org) | Faithful assistance guide dogs are raised and trained to provide blind Israelis with independence, safe mobility and self-confidence. Clients receive the dogs for Free.
- 3477 **K9s For Warriors** | 904 686-1956 | [www.k9sforwarriors.org](http://www.k9sforwarriors.org) | Rescue dogs trained as service dogs for veterans / active duty military suffering from PTSD, TBI, or MST. New leash on life to military heroes.
- 3508 **Kidney Cancer Association** | 800 850-9132 | [www.kidneycancer.org](http://www.kidneycancer.org) | We strive for a world without kidney cancer. Help us fund breakthrough research, educate patients and health professionals and advocate for patients.
- 3424 **La Jolla Institute for Immunology** | 858 752-6500 | [www.didnri.org](http://www.didnri.org) | We're moving closer to a cure. Our cutting-edge research is advancing new treatments and cures for millions suffering from diabetes and other chronic, debilitating diseases.
- 3516 **Lutheran World Relief** | 800 597-5972 | <https://lwr.org> | Affirming God's love for all people, we work with Lutherans and partners around the world to end poverty, injustice and human suffering.
- 4416 **Lymphoma Research Foundation** | 800 235-6848 | [lymphoma.org](http://lymphoma.org) | Funding innovative research; providing information and services to Hodgkin and non-Hodgkin lymphoma patients/caregivers. Our mission: eradicate lymphoma and serve those touched by this disease.



## NEW JERSEY EMPLOYEES CHARITABLE CAMPAIGN

- 3590 **MADRE, Inc.** | 212 627-0444 | [www.madre.org](http://www.madre.org) | MADRE advances women's human rights by meeting urgent needs in communities and building lasting solutions to the crises women face.
- 7125 **Marine Corps -- Law Enforcement Foundation** | 877 606-1775 | [www.mc-lef.org](http://www.mc-lef.org) | Scholarships awarded to children of fallen, active duty Marines or Federal Law Enforcement. Assistance for children of Marines for medical expenses not covered by insurance.
- 3553 **Marine Mammal Center** | 415 289-SEAL | [www.MarineMammalCenter.org](http://www.MarineMammalCenter.org) | Thousands of orphaned, sick and injured marine mammals would have died if not for our state-of-the-art animal care and research facilities, dedicated volunteers, and you.
- 4523 **Marine Mammal Stranding Center** | 609 266-0538 | [www.mmsc.org](http://www.mmsc.org) | Hundreds of whales, dolphins, seals and sea turtles wash ashore on NJ beaches each year. Without MMSC, animals would languish and die on the beaches.
- 7072 **Matthew 25: Ministries** | 513 793-6256 | [www.m25m.org](http://www.m25m.org) | Helping the poorest of the poor. Providing disaster relief, food, clothing and education materials. Meeting the most basic needs of severely suffering people.
- 7004 **Mercy-USA for Aid and Development, Inc.** | 800-556-3729 | [www.mercyusa.org](http://www.mercyusa.org) | Give primary health care, nutrition and safe water to women and children, fight infectious diseases; rescue orphans and other vulnerable youth through vocational training.
- 4504 **Mexican American Legal Defense and Educational Fund** | 213 629-2512 | [www.maldef.org](http://www.maldef.org) | MALDEF promotes and protects the civil rights of Latinos in the areas of Education, Employment, Immigrant Rights, Political Access and administers scholarships for Law students.
- 3593 **Military Officers Association of America Scholarship Fund** | 800 234-6622 | [www.moaa.org/scholarshipfund](http://www.moaa.org/scholarshipfund) | 100% of all CFC donations provide interest-free loans or grants to children from military families (all seven services, officer and enlisted) pursuing a college education.
- 7037 **Monmouth County SPCA** | 732 542-0040 | [www.monmouthcountyspca.org](http://www.monmouthcountyspca.org) | 4,300 homeless, lost, abandoned or abused animals found new homes last year through the efforts of the MCSPCA. Help us save more this year.
- 7038 **Multiple Sclerosis Foundation** | 888 MS-FOCUS | [www.msfocus.org](http://www.msfocus.org) | Multiple Sclerosis impacts individuals and families. Our free national programs such as helpline, education, crisis intervention, homecare grants, and assistive devices motivate, educate and empower.
- 3482 **National CASA/GAL Association for Children** | 800 628-3233 | [www.casaforchildren.org](http://www.casaforchildren.org) | Every child deserves a safe, permanent home. Support CASA advocates nationwide who are providing abused and neglected children with hope for a better future.
- 3530 **National Center for Missing & Exploited Children** | 800 THE-LOST | [www.missingkids.org](http://www.missingkids.org) | Providing assistance to law enforcement and families to help find missing children and prevent child sexual exploitation and victimization.
- 3501 **National Park Trust** | 301 279-7275 | [www.parktrust.org](http://www.parktrust.org) | NPT impacts park preservation by providing in-depth environmental outdoor education experiences for underserved youth and families; and by providing funding to complete park preservation projects.
- 3532 **National Veterans Legal Services Program, Inc.** | 202 265-8305 | [www.nvlsp.org](http://www.nvlsp.org) | Providing free legal services to help veterans and their families secure disability benefits from the Department of Veterans Affairs and the United States Armed Forces.
- 7186 **Native Forward Scholars Fund** | 505 881-4584 | [www.aigcs.org](http://www.aigcs.org) | Native Forward provides post-secondary education scholarships & services to American Indian / Alaska Native students, preparing them for professional careers and leadership in their communities.
- 7187 **Navy SEAL Foundation, Inc.** | 757-363-7490 | [www.navySEALfoundation.org](http://www.navySEALfoundation.org) | Honor and remember our Navy SEAL warriors and their families. Invest in education, family resiliency, and wounded care. Support surviving families. Preserve a legacy.
- 4432 **NEADS INC** | 978 422-9064 | [www.neads.org](http://www.neads.org) | Independence and companionship for wounded warriors, autistic children, the deaf and disabled by providing custom-trained Service Dogs. Help provide these much needed Service Dogs!
- 5025 **Operation First Response, Inc.** | 888 289-0280 | [www.operationfirstresponse.org](http://www.operationfirstresponse.org) | Serves wounded Warriors/Veterans and their families with financial needs. Assistance varies based on individual needs ranging from rent, utilities, vehicle payments, groceries and travel.
- 4529 **Operation Homefront** | 800 722-6098 | [www.operationhomefront.net](http://www.operationhomefront.net) | Be a caring Patriot! Support Operation Homefront's effort to build strong, stable and secure military families through emergency financial and other assistance.
- 3544 **Paws for Purple Hearts** | 707 238-5110 | [www.pawsforpurplehearts.org](http://www.pawsforpurplehearts.org) | Teaching Veterans with Post Traumatic Stress Disorder to train service dogs for fellow Veterans with physical disabilities and combat-related injuries.

## NEW JERSEY EMPLOYEES CHARITABLE CAMPAIGN

- 3507 **Paws With A Cause** | 800 253-PAWS | [www.pawswithacause.org](http://www.pawswithacause.org) | Custom-trained Assistance Dogs enhance independence and quality of life for people with disabilities nationally. We increase awareness of the rights / roles of Assistance Dog Teams.
- 7189 **paws4vets** | 910 632-0615 | [www.paws4vets.org](http://www.paws4vets.org) | Placing customized Service Dogs with Veterans and their dependents living with disabilities including PTSD, TBI, MST & Moral Injury.
- 7159 **Pediatric Brain Tumor Foundation of the United States, Inc.** | 800-253-6530 | [www.curethekids.org](http://www.curethekids.org) | Leading funder of medical research for childhood brain tumors. Offers free patient family support services, including educational materials, college scholarships for survivors, and family camps.
- 7190 **Pediatric Cancer Research Foundation** | 949 859-6312 | [www.pcrf-kids.org](http://www.pcrf-kids.org) | Someday is today - we fund pioneering research that improves treatment, increases survival rates, and reaches for a cure. Help bring hope to children battling cancer.
- 7191 **Pennsylvania Society For The Prevention Of Cruelty To Animals** | 215-463-2311 | [www.pspca.org](http://www.pspca.org) | PSPCA rescues animals from cruelty and neglect, rehabilitates them medically and behaviorally, places them with new loving families. Our programs embody our no-kill philosophy.
- 7005 **Pet Partners** | 425-679-5500 | [www.petpartners.org](http://www.petpartners.org) | Pet Partners' mission is to improve human health and well-being through the human-animal bond.
- 3436 **PETA: People for the Ethical Treatment of Animals** | 757 622-PETA | [www.peta.org](http://www.peta.org) | Fight cruelty. Save lives! Your gift makes a kinder world for animals through undercover investigations, rescues, humane education, spay/neuter, and high-profile advocacy campaigns.
- 3502 **Pets for Patriots, Inc.** | 877 473-8223 | [www.petsforpatriots.org](http://www.petsforpatriots.org) | Provide recovery and transform the lives of veterans, wounded warriors and active duty military through the adoption and care of at-risk shelter dogs and cats.
- 7192 **Pets of the Homeless** | 775 841-7463 | [www.petsofthehomeless.org](http://www.petsofthehomeless.org) | Feeding Pets of the Homeless® mission is to feed and provide basic emergency veterinary care to pets of the homeless who do not have resources.
- 7193 **Philippine Children's Shelter** | 651 493-1551 | [www.philippinechildrensshelter.org](http://www.philippinechildrensshelter.org) | Providing hungry Filipino children with food, medicine, education and a loving home through four shelters and a school. You can make the difference in the life of an orphan!
- 4442 **PKD Foundation** | 800 753-2873 | [www.pkdcure.org](http://www.pkdcure.org) | Accelerating treatments to patients with polycystic kidney disease. We're dedicated to finding a cure for this common genetic disease that leads to kidney failure/death.
- 7076 **Planned Parenthood Federation of America** | 800 230-PLAN | [www.plannedparenthood.org](http://www.plannedparenthood.org) | Ensure access to affordable reproductive health care, protect reproductive rights, and promote access to comprehensive medically accurate sexuality education, domestically and internationally.
- 7194 **Public Employees for Environmental Responsibility** | 202 265-7337 | [www.peer.org](http://www.peer.org) | PEER is watchdog organization that supports public employees in advocating for sound stewardship of natural resources, maintaining government accountability and fighting for scientific integrity.
- 7077 **Puppies Behind Bars** | 212 680-9562 | [www.puppiesbehindbars.com](http://www.puppiesbehindbars.com) | Wounded war veterans returning from Iraq and Afghanistan receive prison-trained service dogs, free of charge, through the Dog Tags initiative of Puppies Behind Bars.
- 7195 **Purple Heart Foundation** | 703 256-6139 | [www.purpleheartfoundation.org](http://www.purpleheartfoundation.org) | In combat, warriors count on their comrades. At home, they count on us!
- 7161 **Rainforest Trust** | 800-456-4930 | [www.RainforestTrust.org](http://www.RainforestTrust.org) | Save rainforests for endangered wildlife! We've protected over 15 million acres from deforestation since 1988. You can save an acre for as little as \$1!
- 7041 **Ramapo-Bergen Animal Refuge** | 201 337-5180 | [www.rbari.org](http://www.rbari.org) | Protecting abandoned, abused, and unwanted animals by finding them forever homes, we give our cats and dogs food, shelter, medical treatment, and, of course, love.
- 3551 **Rape, Abuse, & Incest National Network (RAINN)** | 202 544-3064 | [www.rainn.org](http://www.rainn.org) | Runs National Sexual Assault Hotline; largest anti-rape org. Free, 24-7 services help 150,000 people/year. Programs prevent rape, help victims, bring rapists to justice.
- 7196 **RESOLVE: The National Infertility Association** | 703-556-7172 | [www.resolve.org](http://www.resolve.org) | We provide education, support groups, helpline, and connections to resources to help those struggling with infertility build a family.
- 3505 **Restless Legs Syndrome Foundation** | 512 366-9109 | [www.rls.org](http://www.rls.org) | Help provide education and support to millions of people with Restless Legs Syndrome (RLS). We fund research toward a cure for this debilitating neurological disease.

## NEW JERSEY EMPLOYEES CHARITABLE CAMPAIGN

- 7006 **Robert Irvine Foundation, Inc.** | 813-736-7233 | [www.robertirvinefoundation.org/](http://www.robertirvinefoundation.org/) | Enhance the physical and mental well-being of service members, veterans, first responders, and their families through comprehensive support in food, wellness, community, financial assistance.
- 3572 **Rocky Mountain Elk Foundation** | 406 523-4500 | [www.rmef.org](http://www.rmef.org) | Ensures future of elk, other wildlife and our hunting heritage by conserving, restoring, and enhancing natural habitats through land purchases, conservation easements, education and research.
- 3484 **Sarcoma Foundation of America, Inc.** | 301 253-8687 | [www.curesarcoma.org](http://www.curesarcoma.org) | CureSarcoma. This rare cancer of connective tissues is prevalent in children and receives little government funding, yet impacts 50,000 kids and adults daily.
- 7137 **Save the Chimps** | 772 429-2225 | [www.savethechimps.org](http://www.savethechimps.org) | Rescuing chimpanzees from research, entertainment and the pet trade, we provide them the space needed to heal and enjoy a happy and healthy life!
- 3487 **Save the Manatee Club, Inc.** | 800 432-5646 | [www.savethemanatee.org](http://www.savethemanatee.org) | Leave a lasting legacy! Help us advocate for manatee and habitat protection, promote public awareness, sponsor research, rescue, rehabilitation and release efforts.
- 7197 **SAVE, A Friend to Homeless Animals** | 609-309-5214 | [www.savehomelessanimals.org](http://www.savehomelessanimals.org) | Rescue, shelter, rehabilitate and place homeless dogs and cats. Teach inner-city youth and students with disabilities how to respect and to be safe around animals.
- 3587 **Scholarship America** | 800 279-2083 | [www.scholarshipamerica.org](http://www.scholarshipamerica.org) | Our scholarships help students in need gain access to college. Our support, through financial literacy and college readiness tools, shows them the path to success!
- 3559 **Search Dog Foundation** | 888 459-4376 | [www.SearchDogFoundation.org](http://www.SearchDogFoundation.org) | Saving dogs and people! We rescue dogs, partner them with firefighters, and train them to locate people buried alive during disasters. Join the search!
- 4510 **Seeing Eye, Inc.** | 800 539-4425 | [www.SeeingEye.org](http://www.SeeingEye.org) | Enhancing lives by bringing independence, dignity and self-confidence to blind people through our Seeing Eye® dogs. These dogs bring mobility, safety and self-sufficiency to thousands.
- 4497 **Semper Fi & America's Fund** | 760 725-3680 | [www.SemperFiFund.org](http://www.SemperFiFund.org) | Immediate financial assistance and lifetime support provided to wounded, critically ill, and injured service members and their families. A+ and 4 stars ratings.
- 7044 **SEVA Foundation** | 877 764-7382 | [www.seva.org](http://www.seva.org) | Imagine being blind one day and seeing the next. Sustainable programs prevent blindness/restoration sight in underserved and impoverished populations, helping 4 million people see.
- 4419 **Shriners Hospitals for Children** | 800 241-4438 | [www.shrinershospitalsforchildren.org](http://www.shrinershospitalsforchildren.org) | Children suffering from burns, spinal cord injuries, and orthopedic conditions receive world-class medical care in a family-centered environment regardless of ability to pay.
- 4511 **Skin Cancer Foundation** | 212 725-5176 | [www.skincancer.org](http://www.skincancer.org) | Skin cancer, the world's most common cancer, is occurring at epidemic levels. Your support enables us to continue our public education programs and groundbreaking research.
- 7198 **Society for Science** | 202-785-2255 | [www.societyforscience.org](http://www.societyforscience.org) | Society for Science is dedicated to expanding scientific literacy, effective STEM education, and scientific research.
- 4512 **Soldiers' Angels** | 210 629-0020 | [www.soldiersangels.org](http://www.soldiersangels.org) | Adaptive laptops for wounded warriors, VA assistance for veterans, baby showers for wives of deployed troops. We provide comfort to America's military and their families.
- 7138 **Special Operations Warrior Foundation** | 813 805-9400 | [www.specialops.org](http://www.specialops.org) | Provide scholarship grants and counseling to children of special operations who die in the line of duty. Provide financial assistance to wounded special operations personnel.
- 7199 **Student Conservation Association, The** | 603-543-1700 | [www.thesca.org](http://www.thesca.org) | Every day our parks and natural resources are depleted. We're inspiring youth with hands-on challenges to become stewards of our environment - creating a better world.
- 7200 **Suicide Awareness Voices of Education** | 952 946-7998 | [www.save.org](http://www.save.org) | To prevent suicide through public awareness and education, reduce stigma and serve as a resource to those touched by suicide.
- 3565 **Thyroid Association, American** | 800 849-7643 | [www.thyroid.org](http://www.thyroid.org) | Cancer kills. Research cures. Your support turns scientific discovery into lifesaving medical practice. Support thyroid research to improve the lives of patients with thyroid-related diseases.
- 4444 **TMJ Association, Ltd.** | 262 432-0350 | <http://www.tmj.org> | Jaw disorders affect a person's ability to speak, eat, chew, smile, kiss and even breathe. We promote research, scientifically validated treatments, and vital coping skills.

## NEW JERSEY EMPLOYEES CHARITABLE CAMPAIGN

- 3535 **Toys For Tots Foundation** | 703 640-9433 | [www.toysfortots.org](http://www.toysfortots.org) | Brighten a child's face on Christmas morning. Help the Marines provide a treasured gift and a cherished memory for millions of our nation's neediest children.
- 7140 **Travis Manion Foundation** | 215 348-9080 | [www.travismanion.org](http://www.travismanion.org) | The Travis Manion Foundation empowers Veterans and Families of the Fallen to inspire the next generation of leaders by putting Character into Action.
- 7201 **Trevor Project** | 310-271-8845 | [www.thetrevorproject.org](http://www.thetrevorproject.org) | Crisis & suicide prevention for LGBTQ+ youth. We provide life-saving, life-affirming resources that create a safe, supportive & positive environment for all.
- 4471 **United States Association for UNHCR** | 800 770-1100 | [www.UNrefugees.org](http://www.UNrefugees.org) | Help refugees. Over 54 million people, mostly women and children, have fled starvation, persecution and war. Provide protection, shelter, food, medical care: life saving aid.
- 7046 **USA Cares Inc.** | 800 773-0387 | [www.usacares.org](http://www.usacares.org) | Emergency financial assistance for military and Veteran Families in the form of grants - not loans. We help with PTSD, Foreclosures, Evictions, Utilities, Unemployment, and More.
- 3513 **Vegan Outreach** | 530 302-5089 | [www.veganoutreach.org](http://www.veganoutreach.org) | Saving farmed animals from a lifetime of misery by persuading students to go veg on hundreds of college campuses every year.
- 5034 **Veteran Tickets Foundation** | 888 241-1550 | [www.VetTix.org](http://www.VetTix.org) | Supporting our Military, Veterans and their Families with entertainment, lasting memories and reintegration opportunities by providing tickets to sporting events, concerts, and family activities.
- 4405 **Veterans of Foreign Wars Foundation** | 816 968-1128 | [www.vfwfoundation.org](http://www.vfwfoundation.org) | Help VFW Foundation support US troops! Education scholarships, military family financial assistance, phone connections home, VA claims assistance and patriotic community service programs. All free.
- 4472 **Water.org** | 816 877-8400 | [water.org](http://water.org) | Nearly one billion people lack access to clean water. Twice as many don't have access to a toilet. \$25 can change that for one person.
- 7162 **Wounded Warrior Emergency Support Fund** | 301-588-3283 | [www.airwarriorcourage.org/](http://www.airwarriorcourage.org/) | Honor our Wounded Warriors! We provide rehab services at three Military Medical Centers, and starter IRS 529 College Savings Plans for dependents of aircrews KIA.
- 3495 **Wounded Warriors in Action Foundation** | 813 938-1390 | [wwiaf.org](http://wwiaf.org) | Serves our nation's combat wounded Purple Heart recipients by providing world-class outdoor sporting activities to recognize their sacrifice, encourage their independence, and promote their healing.
- 7203 **Wreaths Across America** | 877-385-9504 | [www.wreathscrossamerica.org](http://www.wreathscrossamerica.org) | Placing wreaths on veteran gravestones in all 50 states and beyond, we remember the fallen, honor those that serve and teach children about freedom.
- 7204 **Yellowstone Forever** | 406 848-2400 | [www.yellowstone.org](http://www.yellowstone.org) | Protect, preserve, and enhance Yellowstone National Park. Your gift helps ensure that the wonders and wildlife of Yellowstone remain undiminished for generations to come.

## United Way Of Greater Mercer County

- 3600 **United Way of Greater Mercer County** | 609-896-1912 | [www.uwgmc.org](http://www.uwgmc.org) | United Way of Greater Mercer County invests in programs, community partnerships, and volunteer engagement to propel individuals and families to reach their fullest potential.
- 3706 **Afrikan Link Initiative** | 862-387-2877 | [www.AfricanLink.org](http://www.AfricanLink.org) | African Link Initiative is an evidence-based identity development experience for youth of African descent that has 3-parts and culminates in a birthright trip to Ghana.
- 3700 **Boys & Girls Club of Mercer County** | 609-392-3191 | [www.bgcmercerc.org](http://www.bgcmercerc.org) | Boys & Girls Clubs of Mercer County helps youth reach their full potential through programs focusing on education, career/college preparation, leadership and building healthy lifestyles.
- 3602 **CancerCare, Inc.** | 800-813-HOPE (4673) | [www.cancercare.org](http://www.cancercare.org) | CancerCare is the leading national organization providing free, professional support services and information to help people manage the emotional, practical and financial challenges of cancer.
- 3612 **Catholic Youth Organization of Mercer County - CYO** | 609-396-8383 | [www.cyomercer.org](http://www.cyomercer.org) | Community organization providing affordable, quality educational & recreational services. Rooted in Catholic tradition, they do so inclusively & non-discriminatorily respecting culture & faith of all.
- 3613 **Child Care Connection** | 609-989-7770 | [www.ccc-nj.org](http://www.ccc-nj.org) | Child care resource and referral agency that counsels parents, provides referrals, offers training and TA to child providers, and administers child care subsidy programs.



## NEW JERSEY EMPLOYEES CHARITABLE CAMPAIGN

- 3707 **HISPA** | 609-436-0417 | [www.hispa.org](http://www.hispa.org) | HISPA mobilizes Latino Role Models to inspire Latino students to discover their potential and desire to embrace education and achieve success.
- 3708 **HomeWorks Trenton** | (609) 414-7907 | [www.homeworkstrenton.org](http://www.homeworkstrenton.org) | HomeWorks Trenton equips young women from marginalized communities to achieve their potential and positively transform the world by providing a supportive and educational residential environment.
- 3709 **Housing Initiatives of Princeton** | (609) 731-8739 | [www.housinginitiativesofprinceton.org](http://www.housinginitiativesofprinceton.org) | HIP helps those experiencing homelessness, eviction, and housing insecurity build toward a sustainable future via stable housing, better employment, and a network of support services.
- 3627 **Jewish Family & Children's Service of Greater Mercer County (JFCS)** | 609-987-8100 | [www.jfconline.org](http://www.jfconline.org) | JFCS provides comprehensive social services to the greater Mercer community including mental health counseling, food pantry & distribution services and senior support.
- 3660 **John O. Wilson Hamilton Neighborhood Service Center, Inc.** | 609-393-6480 | [www.jowilsoncenter.org](http://www.jowilsoncenter.org) | John O. Wilson Hamilton Neighborhood Service Center, Inc. is a non-profit, missioned to improve the quality of life for low-income residents of Hamilton Township.
- 3696 **LALDEF -Latin American Legal Defense and Education Fund** | 609-688-0881 | [laldef.org](http://laldef.org) | The Latin American Legal Defense and Education Fund's mission is to promote the rights of immigrants; facilitate access to health care, education, and legal representation. healthcare, digital literacy, citizenship, healthcare, financial stability, etc.
- 3632 **Mercer Street Friends** | 609-656-5207 | [www.mercerstreetfriends.org](http://www.mercerstreetfriends.org) | Nourishing bodies and minds, empowering families and communities
- 3698 **PEI Kids [Prevention Education Inc.]** | 609-695-3739 | [www.peikids.org](http://www.peikids.org) | PEI Kids is dedicated to promoting and maintaining a safe environment for all children.
- 3703 **Princeton Mobile Food Pantry** | 609-865-4396 | [www.pmfpantry.org](http://www.pmfpantry.org) | The mission of the Princeton Mobile Food Pantry, Inc. is to provide food and other support to underserved members of the Princeton, NJ community.
- 3710 **Princeton Nursery School** | 609-921-8606 | [www.princetonnurseryschool.org](http://www.princetonnurseryschool.org) | PNS provides its diverse student population high-quality, affordable early childhood education and supportive family services to low-to-moderate-income families in central New Jersey.
- 3711 **Rolling Harvest Food Rescue** | (215) 510-8112 | [rollingharvest.org](http://rollingharvest.org) | RHFR connects surplus produce from local farms and food producers to communities in need through food recovery efforts and distribution to area hunger relief sites.
- 3701 **Share My Meals** | 609-283-2450 | [www.sharemy meals.org](http://www.sharemy meals.org) | Share My Meals addresses food insecurity and the environmental impact of food waste by recovering and delivering healthy prepared meals to local communities.
- 3704 **The Children's Home Society of New Jersey** | 609-358-1334 | [www.chsofnj.org](http://www.chsofnj.org) | CHSoF NJ helps and protects at-risk children and families achieve their potential; strengthen families, and strive for stable, permanent, and loving homes for every child.
- 3705 **The Father Center of New Jersey** | (609) 695-3663 | [www.thefathercenter.org](http://www.thefathercenter.org) | The Father Center empowers Fathers to be good parents by offerings emotional, social, and economic resources to improve their lives and those of their children.
- 3702 **The Makers Place** | (609) 751-9128 | <https://www.makersplace.org/> | A faith-based nonprofit offering free diapers, baby items, books, and feminine products, cultivating a culture of dignity, compassion, and community while empowering families in need.
- 3712 **UrbanPromise Trenton, Inc.** | (609) 439-9454 | [www.urbanpromisetrenton.org](http://www.urbanpromisetrenton.org) | UrbanPromise Trenton provides Trenton's children and young adults with the skills necessary for academic achievement, life management, spiritual growth, and leadership.
- 3713 **Volunteers of America Delaware Valley** | 856-854-4660 | [www.voadv.org](http://www.voadv.org) | Volunteers of America Delaware Valley is a non-profit that provides community-based assistance to populations in need so that they can lead self-fulfilled, independent lives.

## United Way Of Gloucester County

- 1400 **United Way of Gloucester County** | 856-845-4303 | [www.uwgcnj.org](http://www.uwgcnj.org) | Raises funds to support Health and Human Services for local residents and creates collaborations to address community problems.
- 1440 **Abilities Solutions (ABILITIES CENTER OF SOUTHERN NEW JERSEY INC)** | 856-848-1025 | [www.abilities4work.com](http://www.abilities4work.com) | Provide employment and employment related training to youth and adults, including Veterans, with disabilities and other barriers to full participation in the workforce.

## NEW JERSEY EMPLOYEES CHARITABLE CAMPAIGN

- 1407 **Acenda** | 844-422-3632 | [www.acendahealth.org](http://www.acendahealth.org) | Whether its simply a helping hand or lifelong support, Acenda seeks to empower individuals of all ages to thrive and explore their greatest potential.
- 1402 **American Red Cross (Southern New Jersey)** | 856-365-7100 | <https://www.redcross.org/local/new-jersey/about-us/locations/southern-nj.html> | Prevents and alleviates human suffering in the face of emergencies by mobilizing the power of volunteers and the generosity of donors.
- 1403 **Arc Gloucester** | 856-848-8648 | [www.thearcgloucester.org](http://www.thearcgloucester.org) | Empowers individuals with intellectual and developmental disabilities, and their families to achieve their highest potential through advocacy, education and quality services.
- 1404 **Big Brothers Big Sisters Independence Region** | 215-790-9200 | [www.independencebigs.org](http://www.independencebigs.org) | To provide children facing adversity with strong and enduring, professionally supported one-to-one mentoring relationships that change their lives for the better, forever.
- 1441 **Boy Scouts of America, Garden State Council** | 609-261-5850 | [www.gardenstatescouting.org](http://www.gardenstatescouting.org) | To prepare young people to make ethical and moral choices over their lifetime by instilling the values.
- 1410 **Center for Family Services, Inc.** | 856-964-1990 | [www.centerffs.org](http://www.centerffs.org) | To support and empower individuals, families and communities to achieve a better life through vision, hope and strength.
- 1439 **FamCare, Inc.** | 856-794-1235 | [www.famcareinc.com](http://www.famcareinc.com) | To provide accessible, high quality reproductive and complementary healthcare services in a confidential environment to men, women and adolescents.
- 1436 **Food Bank of South Jersey, Inc.** | 856-662-4884 | [www.foodbanksj.org](http://www.foodbanksj.org) | Provides food to people in need, delivers health and wellness programs and designs sustainable solutions to help people improve their lives.
- 1409 **Girl Scouts of Central & Southern New Jersey** | 856-795-1560 | [www.gscsnj.org](http://www.gscsnj.org) | Builds girls of courage, confidence and character, who make the world a better place.
- 1408 **Glassboro Child Development Centers** | 856-881-3331 | [www.southjerseykids.org](http://www.southjerseykids.org) | Provide programs and enrichment for children/youth that offer opportunities which empower and assist parents with social, emotional, physical and cognitive development of their children.
- 1426 **Gloucester County YMCA (YMCA Camp Ockanickon)** | 856-845-0720 | [www.ymcagloco.org](http://www.ymcagloco.org) | Dedicated to the development of spirit, mind and body by providing programs and services to residents instilling Christian ideals of caring, honesty, respect and responsibility.
- 1405 **HollyDELL, Inc.** | 856-582-5151 | [www.hollydell.org](http://www.hollydell.org) | Provide exceptional educational, social, emotional, therapeutic, and technological programs for individuals with physical and medical challenges from age 3 through adulthood.
- 1401 **Jersey Care / Volunteer Center of South Jersey** | 856-415-9084 | [www.sjvolunteers.org](http://www.sjvolunteers.org) | To promote volunteerism in South Jersey, connecting individuals with opportunities to serve their communities and to build capacity within the nonprofit sector.
- 1429 **Literacy New Jersey** | 732-906-5456 | [www.literacynj.org](http://www.literacynj.org) | Improves the lives of adults by teaching them to read, write and speak English so they can participate in family, workplace and community life.
- 1412 **Maryville, Inc.** | 855-823-3428 | [www.maryvillenj.org](http://www.maryvillenj.org) | Provide comprehensive, high quality drug and alcohol addiction treatment services for individuals and families affected by the disease of addiction, regardless of ability to pay.
- 1415 **Repauno Pre-School Day Care, Inc.** | 856-423-3222 | [www.facebook.com/Repauno/](https://www.facebook.com/Repauno/) | Provide high quality learning experiences for young, at-risk children in a safe and nurturing environment, empower children by promoting individuality, emphasizing social and emotional development.
- 1411 **Samaritan Healthcare & Hospice** | 856-596-1600 | [www.samaritannj.org](http://www.samaritannj.org) | Provide exceptional care to promote comfort, dignity, and quality of life for those living with serious illness or grief.
- 1433 **Volunteers of America Delaware Valley, Inc.** | 856-854-4660 | [www.voadv.org](http://www.voadv.org) | Provides community-based assistance to individuals in need so that they can lead independent, self-fulfilled lives.
- 1425 **Woodbury Child Development Center** | 856-845-2243 | [www.woodburychilddevelopmentcenter.com](http://www.woodburychilddevelopmentcenter.com) | Provide child care services for low-income families.

## UNAFFILIATED

- 6503 **180 Turning Lives Around, Inc.** | (732) 264-4360 | <https://www.180nj.org> | 180 Turning Lives Around, Inc. empowers domestic and sexual violence victims through crisis response, shelter, hotlines, counseling, legal support, housing, advocacy, prevention, education, and information.
- 0707 **A Place for Us Atlantic County Womens Center DBA AVANZAR** | (609) 601-9925 | <https://www.avanzarnow.org> | A Social Justice agency focused on providing domestic violence, sexual assault and human trafficking survivor and prevention services.
- 8201 **American Civil Liberties Union NJ Foundation** | (973) 854-1735 | <https://www.aclu-nj.org/en> | Our mission is to preserve, advance, and extend the individual rights and liberties guaranteed to every New Jersey by the state and federal constitutions in courts, in the legislature, and in our communities.
- 8227 **AMVETS Service Foundation of New Jersey** | (609) 526-4356 | <https://www.amvets-nj.org> | AMVETS supports American Veterans. We provide free benefits claims services, host community events and bring Awareness to Veteran Suicide. Check us out: [www.amvets-nj.org](http://www.amvets-nj.org)
- 6507 **Anchor House Inc.** | (609) 396-8329 | <https://anchorhousenj.org> | Anchor House Inc. is a multi-service agency for runaway, homeless, abused and at-risk youth and their families, serving our most vulnerable population.
- 8214 **Angels Helping Animals** | (856) 979-3284 | <https://www.angelshelpinganimals.com> | Animals is dedicated to helping improve the lives of fur babies in need from TNR to adoption to whatever is needed! We are a family run rescue that has an amazing Angels family of volunteers, adopters & supporters. Without our Angels Family we would not be able to do what we do!
- 3430 **Animal Rescue Force, Inc.** | (732) 257-7559 | <https://arf.petfinder.com> | Animal Rescue Force, Inc. helps find homes for dogs and cats in need, spays and neuters them prior to adoption to help prevent pet overpopulation.
- 6669 **Animal Sanctuary Society, Inc.** | (856) 642-0004 | <https://www.animalsanctuarysociety.org> | Animal rescue and adoption of homeless animals; veterinary care including spay and neutering; helping seriously ill and/or financially burdened people with their pets.
- 6511 **Animal Welfare Association** | (856) 424-2288 | | AWA engages children and children at heart through the human-animal bond ensuring pet adoption, education, affordable pet care and pet-assisted therapy are accessible to all.
- 6691 **ARVF Corp./DBA Alicia Rose Victorious Foundation** | (856) 784-0615 | <https://www.victoriousfoundation.org> | The Alicia Rose Victorious Foundation is a national, non-profit organization providing age-appropriate programs and activities for children and teens receiving treatment for cancer and other life-threatening illnesses.
- 6692 **Associate Alumnae of Douglass College** | (732) 246-1600 | <https://douglassalumnae.org> | AADC develops/promotes connections among Douglass alumnae, providing programs/services, lifelong learning/network opportunities to meet the interests and needs of our diverse alumnae.
- 8215 **Association of NJ Environmental Commissions** | (973) 539-7547 | <https://www.anjec.org> | To promote local action to protect and restore New Jersey's natural resources and to ensure healthy communities by engaging in equitable and inclusive practices through education and advocacy in support of environmental commissions.
- 0100 **Association of the United States Army** | (703) 907-2678 | <https://www.ausa.org> | The Association of the United States Army (AUSA) supports soldiers, their families and army civilians, provides a voice for the army, and honors those who have served. As the army's premier nonprofit, we serve to educate those we serve, inform our members, and connect the Army.
- 6515 **Atlantic City Rescue Mission** | (609) 345-5517 x116 | <https://acrescuemission.org/> | ACRM provides food, shelter, clothing, health care and programs for thousands annually. Our Education, Career Training and permanent housing placement programs restore HOPE for many
- 0101 **Big Brothers Big Sisters of Mercer County** | (609) 468-8276 | <https://www.mercerbbbs.org> | To provide children facing adversity with strong and enduring, professionally supported one-to-one mentoring relationships that will change their lives for the better, forever.
- 0102 **CAIR-NJ, INC** | (908) 668-5900 | <https://cair-nj.org/> | CAIR-NJ, Inc. champions civil rights, combats bigotry, and supports the empowerment of New Jersey's Muslim community through education, advocacy, and legal support.
- 1125 **Camden County College Foundation** | (856) 374-4946 | <https://www.camdencc.edu/foundation> | Camden County College Foundation secures and manages private gifts, to further the mission of Camden County College, and support academic excellence and student success.
- 6501 **Camden County Hero Scholarship Fund** | (856) 768-9656 | <https://www.camdencountyhero.com> | A non-profit organization providing financial and educational assistance to the families of Camden County's Police, Fire and EMS personnel killed in the line of duty.

## NEW JERSEY EMPLOYEES CHARITABLE CAMPAIGN

- 8202 **Cathedral Soup Kitchen, Inc** | (856) 964-6771 | <https://www.cathedralkitchen.org> | Cathedral Kitchen's mission is to help people out of food insecurity and champion their pursuit of stability and prosperity.
- 8169 **Catholic Charities, Diocese of Trenton** | (609) 394-5181 | <https://www.catholiccharitiestrenton.org> | We provide food, shelter and mental health services to those in need and protect survivors of domestic violence. Serving everyone - regardless of faith, ethnicity or income.
- 8228 **Catholic Family and Community Services** | (973) 737-2077 | <https://www.ccpaterson.org> | Catholic Family & Community Services empowers marginalized individuals & families, guiding them toward self-sustainability through compassionate service, advocacy, education, and community building.
- 0103 **Cathy Miller Cancer Fund** | (609) 706-4254 | <https://www.cathymillercancerfund.org> | Cathy Miller Cancer Fund raises funds to ease the financial burden of cancer diagnosis for patients staying at AstraZeneca Hope Lodge while receiving lifesaving treatment.
- 6719 **Children's Hospital of Philadelphia** | (267) 426-5332 | <https://chop.edu/> | Children's Hospital of Philadelphia strives to be the world leader in pediatric health care, providing excellent patient care, innovative research and quality professional education.
- 8102 **ChoiceOne Pregnancy & Sexual Health Resource Center** | (800) 497-8378 | <https://www.mychoiceone.org> | Free & confidential STI screening, mentoring, pregnancy testing, ultrasounds, parenting programs, baby supplies, referrals for assistance and affordable mental health counseling.
- 6549 **Community Action Service Center dba Rise** | (609) 443-4464 | <https://www.njrise.org> | Rise provides a food pantry, summer camp, adult and youth programming, case management, and referrals to assist hundreds of local struggling families.
- 1014 **Contact of Burlington County** | (856) 234-5484 | <https://www.contactburlco.org> | Free confidential services: 24/7/365 Sexual Violence response and accompaniment; individual/group sexual violence counseling; Emotional Support Helpline and resources. Community Education and Outreach available.
- 6621 **CONTACT of Mercer County New Jersey, Inc.** | (609) 737-2000 | <https://contactofmercer.org/> | CONTACT is a 988 center providing free, confidential support to those experiencing mental health crisis including suicidal ideation, substance use crises, or any emotional distress.
- 6526 **Crisis Pregnancy Center of South Jersey Inc. DBA: Cornerstone Women's Resource Centers** | (856) 935-0304 | <http://www.pathtolifepartners.org> | We provide support and material assistance for pregnant and parenting mothers; prenatal/parenting education; pregnancy loss recovery counseling; and abstinence education to area school youths.
- 8171 **Delaware Valley Golden Retriever Rescue Inc** | (717) 484-4799 | <https://www.dvgr.org> | Delaware Valley Golden Retriever Rescue provides new beginnings for displaced Golden Retrievers, and other golden-hearted dogs, along with a full array of adoptive and educational support for the adopters and broader community.
- 6551 **EASEL Animal Rescue League** | (609) 447-9863 | <https://www.easelnj.org> | No Kill Animal Rescue, Vet Care, Low Cost Community Care, Spay/Neuter and Adoption of Dogs and Cats
- 1239 **Elijah's Promise** | (732) 545-9002 | <https://www.elijahspromise.org> | Elijah's Promise harnesses the power of food to break the cycle of poverty, alleviate hunger, and change lives. Learn more at our agency website: [elijahspromise.org](http://elijahspromise.org)!
- 8173 **Embrace Kids Foundation** | (732) 247-5300 | <https://www.embracekids.org> | We improve the quality of life for children facing serious health challenges through a range of services like financial assistance, education, scholarships, social services, etc.
- 8033 **embrella (Foster and Adoptive Family Services, Inc.)** | (609) 412-2678 | <https://www.embrella.org> | We are a New Jersey foster care nonprofit 501(c)3 organization. Our mission is to embrace, support, and advocate for children, youth, and families within the child welfare community.
- 8174 **Emmanuel Cancer Foundation** | (908) 322-4323 | <https://www.emmanuelcancer.org> | ECF provides free support to New Jersey families facing pediatric cancer, including in home counseling, food, gifts and toys, and emergency financial assistance.
- 8177 **EZER MIZION** | (718) 853-8400 | <https://HTTPS://WWW.EZERMIZION.ORG> | Help us save lives and provide crucial services in ISRAEL to 650,000 of those challenged by old age, special needs, disability, mental illness, and cancer.
- 8230 **Freehold Area Open Door** | (732) 780-1089 | <https://www.faopendoor.org> | Freehold Area Open Door seeks to assist the most vulnerable among us. Our goal is to meet our clients where they are, address their immediate needs, and then provide support as they develop skills to become self-reliant.

## NEW JERSEY EMPLOYEES CHARITABLE CAMPAIGN

- 8143 **Friends of the Burlington County Animal Shelter** | (856) 217-6145 | <https://www.friendsofbcas.org> | Friends enhances lives of shelter animals and helps them find homes. Reduce number of cats and dogs by sponsoring low-cost spay/neuter programs, fostering, food bank, shelter diversion program, TNR and other programs.
- 6651 **Friends of the Monmouth County Park System, Inc.** | (732) 975-9735 | <https://www.friendsofmonmouthcountyparks.org> | We are nonprofit and support Monmouth County Park System projects such as historical/natural resource preservation, recreation for urban youth and individuals with disabilities.
- 6504 **Funny Farm Rescue** | (609) 742-9410 | <https://funnyfarmrescue.org> | We are personally committed to the well being of abused and abandoned animals. We provide food, shelter, medical care, compassion and love for unwanted animals.
- 0104 **Garden State Animal Rescue Center** | (732) 413-5537 | <https://www.gardenstatearc.org> | The mission of GSARC, in affording respect to all animals, aims to improve animal welfare and quality of life by providing rescue, veterinary care, enrichment and shelter across New Jersey.
- 6623 **Good Grief, Inc.** | (908) 522-1999 | <https://www.good-grief.org> | Good Grief provides support, education and healthy life skills to kids, families and communities who have suffered loss and adversity by leveraging research based programs to reduce the effects of adversity, such as divorce, bullying, and death.
- 0105 **Grace Giving and Receiving Assistance for our Community's Essentials, Inc.** | (908) 259-4744 | <https://www.gracegivingreceiving.org/> | GRACE meets community needs with resources to enable the good health and success of our vulnerable and underserved neighbors with fresh food and essentials.
- 0106 **Helping Other People Evolve, Inc** | (856) 234-2200 | <https://hopesnj.org> | Provides in person and virtual peer grief support to provide comfort and help to widows and widowers who have lost a life partner.
- 8105 **Histiocytosis Association, Inc.** | (856) 589-6606 | <https://www.histio.org> | Histiocytosis Association is dedicated to raising awareness about histiocytic disorders, providing education and emotional support, and funding research leading to better treatments and a cure.
- 6545 **HomeFront, Inc.** | (609) 989-9417 | <https://www.homefrontnj.org> | HomeFront provides Safe, Secure Housing (emergency/permanent/homelessness prevention); Children's Support (camp/afterschool); Self-Sufficiency Tools (literacy/ job/life skills); Basic Resources (furniture/clothing/food) & Personal Wellness (art therapy/health education).
- 6510 **House of Charity/South Jersey Catholic Ministry Appeal (SJCMA)** | (856) 583-6126 | <https://www.camdendiocese.org/sjcma/> | The House of Charity/SJCMA provides for those in need in southern NJ regardless of race, creed or origin. This includes social and community services, special education, healthcare services, and compassionate outreach.
- 1615 **Hunterdon Land Trust** | (908) 237-4582 | <https://www.hunterdonlandtrust.org> | Fostering healthy ecosystems and communities in the Hunterdon County region through permanent preservation of open space and farmland, stewardship of natural resources, and cultivation of the Dvoor Farm as a center for inspiration, education, and connection.
- 0107 **Inspiring Life Together** | (609) 217-0808 | <https://inspiringlifetogether.org> | We are a community based organization with a mission to care for mothers undergoing treatment for breast cancer and their families by providing practical goods and services that support their mental, physical, and emotional wellness during and post active treatment.
- 8122 **Institute of Music for Children** | (908) 469-1211 | <https://www.instituteofmusic.org> | Each year IMC engages 1,000 urban youth in becoming arts lovers and arts makers, together creating life-changing experiences on our Elizabeth campus and in the community.
- 0108 **Interfaith Caregivers of Greater Mercer County** | (609) 393-9922 | <https://icgmc.org> | ICGMC helps seniors and disabled individuals to live safely in their homes by providing free non-medical volunteer services such as grocery shopping, transportation to appointments, fall prevention programs, and companionship. All services are free of charge.
- 0721 **Jewish Family Service of Atlantic County** | (609) 822-1108 | <https://www.jfsatlantic.org> | JFS encourages strong families, thriving children, health adults, energized seniors and vital communities. JFS Impacts thousands of lives throughout Atlantic & Cape May Counties.
- 1603 **Jewish Family Service of Somerset, Hunterdon and Warren Counties** | (908) 725-7799 | <https://www.jewishfamilysvc.org> | JFS is a nonprofit, nonsectarian agency providing mental health counseling and other social services to a diverse client population including children, families and seniors
- 6619 **Karen Ann Quinlan Memorial Foundation, DBA Karen Ann Quinlan Hospice** | (973) 383-0115 | <https://KarenAnnQuinlanHospice.org> | We are a nonprofit organization providing a full continuum of high quality medical, emotional, and spiritual care to hospice patients, their families and the community,



## NEW JERSEY EMPLOYEES CHARITABLE CAMPAIGN

- 0109 **Keys 2 Success, Inc.** | (908) 883-0887 | <https://keysnewark.com> | Empowering Newark youth through high-quality music education, fostering leadership, resilience, and academic success to create lasting positive change in their lives and communities.
- 8221 **Kingsway Education Foundation** | (856) 467-3300 x4205 | <https://www.krsd.org/KEF> | The Kingsway Education Foundation (KEF) is committed to excellence within the Kingsway Regional School District by providing scholarships and district-wide grants that enhance educational opportunities, support student success, and enrich the overall learning experience.
- 8220 **K's Kitten Rescue** | (732) 475-0222 | <https://kskittenrescue.org> | The mission of K's Kitten Rescue is to stabilize, nurture and socialize vulnerable kittens and find them permanent homes. We support local Trap Neuter Release programs and strive to find homes for any adoptable cats and kittens caught during these efforts.
- 1131 **Larc School** | (856) 933-3725 | <https://larc.school.org/> | Larc School is a non-profit, special education school, which compassionately and expertly provides educational and therapeutic services to students with multiple disabilities between the ages of 3-21. Larc has been serving families throughout South Jersey for over 50 years.
- 8010 **Lawrence Township Education Foundation** | (609) 310-1831 | <https://www.ltefnj.org> | OUR MISSION is Enhancing Public Education by Fostering educational excellence, creativity, and achievement in the Lawrence Township Public Schools
- 6564 **Legal Services of New Jersey** | (732) 572-9100 | <https://www.lsnj.org> | LSNJ coordinates the statewide Legal Services system, which provides free legal assistance to low-income New Jerseyans for their civil legal issues.
- 8123 **Lunch Break, Inc.** | (732) 747-8577 | <https://www.lunchbreak.org> | Lunch Break freely provides life's necessities, including food, clothing, housing solutions, as well as outreach to at-risk communities, life skills and job training, health and wellness programs, and youth and social services programs, to anyone in need in Monmouth County.
- 6546 **Mainstage Center for the Arts** | (855) 936-2467 x5 | <https://www.mainstage.org> | Mainstage Center for the Arts empowers youth through the performing arts, fostering creativity and community. Since 1989, we've grown from a summer camp to serving thousands year-round.
- 6553 **Martin Luther King Youth Center, Inc.** | (908) 526-3688 | <https://http:www.mlkycenter.org> | The Martin Luther King Youth Center provides a program which addresses the educational, developmental, cultural, social, physical, nutritional and mental needs of school aged children.
- 6565 **Marty's Place Senior Dog Sanctuary** | (609) 259-1278 | <https://www.martysplace.org> | Marty's Place provides a loving environment for senior dogs that are homeless. We provide quality care to all residents & peace of mind to caregivers knowing their senior dogs have forever homes in our sanctuary or foster/adoptive homes.
- 8108 **Masonic Charity Foundation of New Jersey DBA Masonic Village at Burlington** | (609) 239-3999 | <https://www.njmasonic.org> | We provide a full continuum of comprehensive health care services for seniors, as well as scholarships and special programs designed to help students at risk.
- 6555 **Meals on Wheels in Greater New Brunswick** | (732) 249-3488 | <https://mowgnb.org> | Meals on Wheels in greater New Brunswick enriches seniors' lives and helps them maintain independence through nutritious food, human connections, and social services support
- 1631 **Meals on Wheels in Hunterdon, Inc.** | (908) 284-0735 | <https://www.mowih.org> | A non-profit agency offering nutrition services by providing meals and safety checks, socialization, nutrition education, and nutrition counseling for the elderly in our community.
- 6626 **Meals on Wheels of Mercer County, Inc.** | (609) 395-3483 | <https://www.mealsonwheelsmerc.org> | MOWMC is a premier nutrition program providing medically tailored meals and related services, while easing the social isolation of our homebound participants. The goal of our services is to assist seniors, who wish to remain independent in their homes.
- 8109 **Middle Earth** | (908) 725-7223 | <https://www.middleearthnj.org> | Middle Earth provides employment readiness, college preparedness, life skills education, recreation, community service, mentoring, and afterschool programming to youth & their families in Somerset County.
- 8222 **Move For Hunger, Inc.** | (732) 774-0521 | <https://www.moveforhunger.org> | Millions of Americans are hungry while 38% of food goes unsold or uneaten. Help us fight waste and deliver more food to families in need.
- 8235 **New Jersey Blind Citizens Association, Inc.** | (732) 291-0878 | <https://www.njbca.org> | NJBCA unlocks opportunities, and opens doors for growth, happiness, independence, and confidence enabling NJ's blind and visually impaired to lead healthy, self-sufficient, and productive lives.

## NEW JERSEY EMPLOYEES CHARITABLE CAMPAIGN

- 8112 **New Jersey Center for Tourette Syndrome and Associated Disorders, Inc.** | (908) 575-7357 | <https://www.njcts.org> | NJCTS provides services and advocacy for families; outreach to medical and educational communities; public awareness and support of research for treatment and a cure.
- 6579 **New Jersey State Museum Foundation** | (609) 540-9174 | <https://njstatemuseumfoundation.givecloud.co/> | Since 1968, the New Jersey State Museum Foundation has supported the collections, exhibitions, and educational programs of the Museum through volunteerism, advocacy, and fundraising.
- 8130 **New Jersey Tree Foundation** | (609) 694-8831 | <https://NJTrees.org> | The NJ Tree Foundation is a statewide nonprofit organization dedicated to planting trees in New Jersey's most underserved neighborhoods, where the need is greatest.
- 0110 **New Jersey Voluntary Organizations Active in Disaster Relief, Inc (NJVOAD)** | (609) 321-1233 | <https://njvoad.org> | NJVOAD is a nonprofit support organization that fosters connections and collaborations amongst community organizations in order to equip and support them in their everyday missions, as well as to prepare, respond, and recover from major disruptive events.
- 6633 **Ocean of Love, Inc** | (732) 270-3500 | <https://www.oceanoflove.org> | We provide financial and emotional support to children with cancer and their families. We ease the financial burden placed on families and help the children experience the joys of childhood.
- 0111 **One Accord Inc, d/b/a Kids Alley** | (856) 546-1098 | <https://www.kidsalley.org> | Our mission is to confront and alleviate personal needs and societal shortcomings that affect at-risk children and their families.
- 0112 **One Step Closer Animal Rescue, Inc.** | (973) 652-3969 | <http://www.oscaranimalrescue.org/> | No-Kill Animal Shelter, TNR for feral cats, animal abuse cases, humane treatment of animals education
- 8172 **PAL of Egg Harbor Township** | (609) 645-8413 | <https://www.ehtpal.org> | Our mission is to improve Police/Youth/Community relations and advance the needs/welfare of our children. We provide before/after school childcare, summer camp, STEM workshops and sports programs. We host a youth coat drive, holiday shopping and an egg hunt for visually impaired
- 8236 **Partners in Learning, Inc.** | (856) 374-2821 | <https://www.pilnj.org> | Provides intensive intervention for young children with autism spectrum disorders and their families for meaningful inclusion in natural settings such as home, community and school.
- 8014 **Partnership for the Delaware Estuary Inc.** | (800) 445-4935 | <http://delawareestuary.org> | Partnership for the Delaware Estuary combines science, education, and outreach efforts for clean water, healthy habitats, and strong communities for the Delaware River and Bay.
- 0113 **Pedals for Progress** | (908) 638-8893 | <https://p4p.org> | Our mission: To empower sustainable economic development by recycling bicycles and sewing machines from the U.S. and shipping them to motivated people in the developing world.
- 0114 **Peter's Place** | (610) 687-5150 | <https://www.petersplaceonline.org> | Peter's Place provides a safe and supportive environments for grieving children and families, and to foster understanding of the effects of death and grief.
- 8237 **Princeton Child Development Institute** | (609) 924-6280 | <https://pcdi.org/> | PCDI, pioneering autism research, intervention, and education since 1970. Our compassionate, evidence-based services foster independence, dignity, and self-determination for individuals with autism.
- 8153 **Princeton-Blairstown Center** | (609) 921-0070 | <https://www.princetonblairstown.org/> | Princeton-Blairstown Center empowers young people, primarily from historically marginalized communities, to strengthen their academic and social-emotional skills through experiential, environmental, and adventure-based programming.
- 8238 **Probation Association of New Jersey Education Fund** | (732) 223-1799 | <https://www.panj.org> | PANJ-EF enhances training for NJ Courts professionals through scholarships, events, and an annual conference, fostering professional growth to better serve New Jersey citizens.
- 0115 **Rahway Community Action Organization** | (732) 382-9311 | <https://www.rahwaycao.org> | Provides high-quality, accessible early childhood education, child care, before and after school programs, and summer camps for infants through age 13.
- 6508 **Ramapo College Foundation** | (201) 684-7611 | <https://www.ramapo.edu/foundation/> | Provide the resources "that make a difference" in the Ramapo College's quest for educational excellence, namely for student scholarships, faculty development, and educational and community programs.
- 6518 **Rowan University** | (856) 256-4097 | <https://https.rowan.edu> | Our dedication to the success of Rowan University and its students is reflected in our efforts to establish and cultivate partnerships with generous individuals, foundations, and corporations. This investment in excellent public higher education affirms our commitment!

## NEW JERSEY EMPLOYEES CHARITABLE CAMPAIGN

- 0116 **Runaway Farm** | (848) 333-4604 | | Our mission is to give sanctuary to animals at risk. Through education, advocacy and service, we hope to teach compassion and promote humane treatment of farm animals.
- 0117 **Rutgers Hillel Corporation** | (732) 545-2407 | <https://rutgershillel.org> | Rutgers Hillel's vision is to provide every Jewish student at Rutgers University a sense of People, Place and Pride. Rutgers Hillel's mission is to enrich the lives of Jewish Rutgers students so they may enrich the lives of the Jewish people and the world.
- 8192 **Sea Turtle Recovery** | (609) 667-4076 | <https://seaturtlerecovery.org/> | Sea Turtle Recovery is dedicated to the rehabilitation of sick and/or injured sea turtles and educating about sea turtles and ways to protect their future.
- 2523 **Second Street Youth Center Inc** | (908) 561-0421 | <https://www.ssycinc.org> | Second Street Youth Center provides Early Childhood, STEM focused After School and Summer Programs. We offer community social services.
- 6519 **Senior Citizens United Community Services, Inc.** | (856) 465-1121 | <https://www.scucs.org> | Services aimed at improving quality of life, and preventing premature institutionalization for the frail and vulnerable of Southern NJ with the greatest socio-economic need
- 8225 **Shore Clubhouse, Inc.** | (732) 759-1595 | <https://ShoreHouseNJ.org> | Shore House restores hope, independence and self-worth for people living with mental illness by providing access to social education and employment opportunities. At Shore House, isolation is replaced with community, empowerment and a sense of purpose.
- 8240 **Sister2Sister** | (908) 418-7431 | <https://s2scnj.org> | Sister2Sister is the only survivor run organization in NJ providing breast health education to the community and financial support to women in treatment for emergency needs.
- 8211 **South Jersey Regional Animal Shelter, Inc.** | (856) 691-1500 | <https://sjas.org> | Our function at South Jersey Regional Animal Shelter is to serve as a refuge for thousands of stray, unwanted, abused, abandoned, and sick animals.
- 8241 **Special Olympics New Jersey** | (609) 896-8000 | <https://www.sonj.org> | Special Olympics New Jersey provided year-round sports training and athletic competition in a variety of Olympic-type sports for children and adults with intellectual disabilities.
- 6587 **Special People United to Ride, Inc.** | (732) 224-1367 | <https://www.spuronline.org> | Special People United to Ride, Inc. raises funds to provide assistance to individuals with disabilities in New Jersey through need based scholarships for therapeutic horsemanship.
- 8212 **Stephen Siller Tunnel to Towers Foundation** | (718) 987-1931 | <https://www.t2t.org> | T2T helps America's heroes by providing mortgage-free homes to Gold Star & fallen first responder families, and by building specially-adapted smart homes for catastrophically injured veterans & first responders. T2T is also committed to eradicating veteran homelessness.
- 6733 **Stockton University Foundation** | (609) 652-4753 | <http://stockton.edu> | The Foundation provides leadership and oversight and is responsible for raising, stewarding, and distributing its assets.
- 6590 **Sunshine Foundation** | (445) 201-4968 | <https://www.sunshinefoundation.org> | Sunshine Foundation answers the dreams of chronically ill, physically challenged and abused children, ages 3 to 18 whose family can't answer due to financial limitation.
- 6557 **TASK (Trenton Area Soup Kitchen)** | (609) 695-5456 | <https://trentonsoupkitchen.org/> | TASK's mission is to feed those who are hungry in the greater Trenton area and offer programs that encourage self-sufficiency and improve quality of life. In 2024, TASK served 535,103 hot, nutritious, made-from-scratch meals through a network of 39 community meal sites.
- 8242 **The Arc Mercer** | (609) 406-0181 | <https://www.arcmercer.org> | The Arc Mercer is the leading provider of services to adults with intellectual and developmental disabilities in the area. We provide innovative solutions including community-based housing, vocational training, recreation, and the only IDD mental health facility in the NJ.
- 0701 **The Arc of Atlantic County** | (609) 485-0800 | <https://thearcatlantic.org/> | The Arc of Atlantic County improves the lives of people with intellectual and developmental disabilities in our community. Through direct services, advocacy, education, and prevention activities, we work to make choices possible about how and where they live, learn, work and play
- 6591 **The Bridge Academy** | (609) 960-6539 | <http://bridgeacademynj.org> | The Bridge Academy is a NJ approved independent school for students with languagebased learning disabilities such as dyslexia, auditory processing, ADHD and or/dysgraphia.

## NEW JERSEY EMPLOYEES CHARITABLE CAMPAIGN

- |  |  |
|--|--|
| <p>8190 <b>The Rescue Mission of Trenton</b>   (609) 396-2183   <a href="https://www.rescuemissionoftrenton.org">https://www.rescuemissionoftrenton.org</a>   The Rescue Mission of Trenton feeds those who are hungry, houses those who are homeless, counsels those seeking recovery and provides life-changing opportunities.</p> <p>8136 <b>The Saints Prison Ministry, Inc.</b>   (609) 845-3197   <a href="https://www.saintsprisonministry.org">https://www.saintsprisonministry.org</a>   To present the gospel of Jesus Christ to prisoners through athletics, and to mentor them towards spiritual maturity and a successful transition into family/community.</p> <p>0726 <b>The Salvation Army New Jersey Division</b>   (908) 851-9300   <a href="https://easternusa.salvationarmy.org/new-jersey/">https://easternusa.salvationarmy.org/new-jersey/</a>   The Salvation Army provides vital services, including food, shelter, youth programs, and disaster relief, offering hope and support to those in need across communities.</p> <p>6685 <b>The Sierra House</b>   (973) 678-3556   <a href="https://www.sierrahouse.org">https://www.sierrahouse.org</a>   A nonprofit committed to improving the prospects of individual achievement for homeless and low to moderate individuals and families through housing, education, and community services.</p> <p>0118 <b>The Watershed Institute</b>   (609) 797-3735   <a href="https://www.thewatershed.org">https://www.thewatershed.org</a>   Keeping water clean, safe and healthy is the heart of our mission. We work to protect and restore our water and natural environment in central New Jersey through conservation, advocacy, science and education.</p> <p>6520 <b>The William Paterson University of NJ Foundation, Inc.</b>   (973) 720-2615   <a href="https://www.wpunj.edu/giving">https://www.wpunj.edu/giving</a>   To support the development and growth of William Paterson University of New Jersey by raising funds for scholarships, cultural events, community activities and facilities.</p> <p>6598 <b>Thomas Edison State University Foundation, Inc.</b>   (609) 984-1588   <a href="https://www.tesu.edu">https://www.tesu.edu</a>   The Thomas Edison State University Foundation is a private, nonprofit corporation and exists exclusively to support the programs and activities of Thomas Edison State University.</p> <p>8159 <b>Turner Syndrome Foundation, Inc.</b>   (732) 847-3385   <a href="https://turnersyndrome.foundation.org">https://turnersyndrome.foundation.org</a>   Helping the 1 in 2,000 girls affected by Turner Syndrome achieve a lifetime of possibilities through education, awareness, research, and advocacy.</p> <p>0600 <b>UNCF-United Negro College Fund</b>   (973) 642-1955   <a href="https://www.UNCF.ORG/NJ">https://www.UNCF.ORG/NJ</a>   UNCF envisions a nation where all Americans have equal access to a college education that prepares them for rich intellectual lives, competitive and fulfilling careers, engaged citizenship and service to our nation.</p> | <p>3800 <b>United Way of Bucks County</b>   (215) 949-1660   <a href="https://www.uwbucks.org">https://www.uwbucks.org</a>   United Way of Bucks County creates opportunities for quality education, financial stability, and good health to ensure real, lasting change for individuals and our communities.</p> <p>1200 <b>United Way of Central Jersey</b>   (732) 247-3727   <a href="https://www.uwcj.org">https://www.uwcj.org</a>   UWCJ ensures young families thrive and meets community needs. Your donation supports life-changing programs, breaking poverty cycles, and building brighter futures for struggling families.</p> <p>0119 <b>United Way of Hunterdon County</b>   (908) 633-1340   <a href="https://www.uwhunterdon.org/">https://www.uwhunterdon.org/</a>   Our focus is on helping ALICE - the 26% of our neighbors who are Asset Limited, Income Constrained and Employed (or retired). We do this through Youth, Health and Financial Security programs.</p> <p>8137 <b>United Way of Passaic County</b>   (973) 279-8900   <a href="https://www.unitedwaypassaic.org">https://www.unitedwaypassaic.org</a>   The United Way of Passaic County address community needs in the areas of health, income and education, by mobilizing the caring power of our community.</p> <p>0120 <b>Urban League of Union County</b>   (908) 351-7200   <a href="https://www.uloucny.org">https://www.uloucny.org</a>   The Urban League of Union County empowers underserved communities through education, workforce development, housing, and reentry services —creating opportunities for economic self-sufficiency and social justice for all.</p> <p>1147 <b>UrbanPromise Ministries, Inc. (Camden)</b>   (856) 661-1700   <a href="https://urbanpromiseusa.org">https://urbanpromiseusa.org</a>   UrbanPromise offers after school programs, summer camps, two schools (K-8, 9-12), experiential learning, wellness, youth job training programs, college scholarships and emergency relief.</p> <p>0121 <b>Villages in Partnership</b>   (609) 772-4753   <a href="https://villagesinpartnership.org">https://villagesinpartnership.org</a>   Villages in Partnership is a registered 501(c)(3) nonprofit organization that partners with rural villages in Sakata, Malawi to eradicate extreme poverty.</p> <p>8243 <b>Waterspirit</b>   (732) 923-9788   <a href="http://www.waterspirit.org">http://www.waterspirit.org</a>   Waterspirit is a spiritual ecology nonprofit that informs, inspires, and empowers people of all beliefs to deepen their consciousness of the sacredness of water and the interdependence of all Earth's systems.</p> <p>6620 <b>Womanspace Inc., DBA Younity</b>   (609) 394-0136   <a href="https://www.younitynj.org">https://www.younitynj.org</a>   Younity (formerly Womanspace) provides life-saving and lifechanging services to survivors of domestic and sexual violence in Mercer County, from the emergency need for safety to the long-term need for housing and counseling.</p> |
|--|--|

## NEW JERSEY EMPLOYEES CHARITABLE CAMPAIGN

- 6671 **Women Aware, Inc.** | (732) 249-4900 | <https://womenaware.net> | Women Aware provides free, confidential services to survivors of domestic violence in Middlesex County: 24-hour multilingual hotline, emergency shelter, legal advocacy, support groups, and children's programs. The agency also operates the Middlesex County Family Justice Center.
- 6601 **Wynona House Inc** | (973) 753-1186 | <https://www.wynonashouse.org> | Promoting justice and providing healing for child victims by coordinating investigations, prosecution, treatment, and wrap-around services, ensuring safe children, strong families and victims can become children again.
- 0122 **YM YWHA of Union County** | (908) 289-8112 | <https://www.uniony.org> | Our agency provides community services such as daycare, camp, senior citizen programs, nursery school, and recreational facilities. We are located in the heart of Union County serving individuals of all ages and ethnicities.



## Index

6503 180 Turning Lives Around, Inc., 35

### A

0707 A Place for Us Atlantic County Womens Center DBA AVANZAR, 35

7050 Abandoned Children's Fund, 22

1440 Abilities Solutions (ABILITIES CENTER OF SOUTHERN NEW JERSEY INC), 33

7051 Abused Children's Fund, Inc., 22

0423 Accion, 16

1407 Acenda, 34

3451 Adoptions by Cradle of Hope, 22

2072 Affordable Housing Alliance, 9

3706 Afrikan Link Initiative, 32

3504 Aid For Starving Children, 22

3406 Air & Space Forces Association, 22

3439 Alex's Lemonade Stand Foundation for Childhood Cancer, 22

0441 Alight (American Refugee Committee), 16

3418 Alley Cat Allies, 22

4446 Alley Cat Rescue, 22

4269 Alliance Defending Freedom, 10

4003 ALPHA-1 Foundation, Inc., 10

0402 ALS United Mid-Atlantic, 10

0555 Alzheimers Disease & Related Disorders Association Inc., 10

3395 Alzheimer's Disease Research, 14

4421 Alzheimer's Foundation of America, 22

0574 Alzheimer's New Jersey, 10

5008 Alzheimer's Research and Prevention Foundation, 22

3411 Alzheimer's Research Foundation, Fisher Center, 22

3401 American Association for Cancer Research, 22

7165 American Association of Kidney Patients, Inc., 22

3564 American Battlefield Trust, 22

4247 American Bible Society, 10

3912 American Bird Conservancy, 19

3409 American Breast Cancer Foundation, 22

4255 American Cancer Society, 10

3268 American Center for Law and Justice, 15

7014 American Civil Liberties Union Foundation, Inc., 15

8201 American Civil Liberties Union NJ Foundation, 35

4226 American Council of the Blind, 10

0503 American Diabetes Association, 10

4256 American Family Association, Inc., 10

3917 American Farmland Trust, 19

3350 American Forests, 19

0616 American Heart Association, 11

3452 American Humane Association, 22

4423 American Indian College Fund, 22

4412 American Indian Youth Running Strong, 22

3417 American Institute for Cancer Research, 23

0440 American Jewish World Service, 16

7211 American Kennel Club Canine Health Foundation, 23

0505 American Kidney Fund, 11

3918 American Littoral Society, 19

0575 American Liver Foundation, 11

0576 American Lung Association, 11

0509 American Parkinson Disease Association, 11

1402 American Red Cross (Southern New Jersey), 34

4417 Americans Helping Americans, 23

0434 Americares, 16

3400 America's Best Charities, 22

3200 America's Charities, 14

5012 America's VetDogs - the Veteran's K-9 Corps, Inc., 23

3240 Amnesty International USA, 15

0453 Amref Health Africa, 16

8227 AMVETS Service Foundation of New Jersey, 35

0572 Amyotrophic Lateral Sclerosis Assn., 11

0409 Amyotrophic Lateral Sclerosis Association Greater New York Chapter, 11

6507 Anchor House Inc., 35

8214 Angels Helping Animals, 35

7167 Animal Crisis Care, 23

4506 Animal League America, 23

7009 Animal Legal Defense Fund, 23

3430 Animal Rescue Force, Inc., 35

6669 Animal Sanctuary Society, Inc., 35

6511 Animal Welfare Association, 35

3453 Anxiety and Depression Association of America, 23

3413 Appalachian Trail Conservancy, 23

3448 Apraxia Kids, 23

1403 Arc Gloucester, 34

0513 Arc of New Jersey, 11

4257 Arthritis Foundation, 11

## NEW JERSEY EMPLOYEES CHARITABLE CAMPAIGN

7168 Arthritis National Research Foundation, 23  
 6691 ARVF Corp./DBA Alicia Rose Victorious Foundation, 35  
 0436 Ashoka, 16  
 3441 Asian Children's Rescue & Relief Fund, 23  
 3541 ASPCA: American Society for the Prevention of Cruelty to Animals, 23  
 6692 Associate Alumnae of Douglass College, 35  
 8215 Association of NJ Environmental Commissions, 35  
 0100 Association of the United States Army, 35  
 6515 Atlantic City Rescue Mission, 35  
 4426 Autism Intervention and Treatment Research -- Organization for Autism Research, 23  
 3485 Autism Society of America, 23  
 0508 Autism Speaks, 11  
 7169 Autoimmune Association, 23

### B

---

0514 Be The Match Foundation (NMDP), 11  
 3297 Best Friends Animal Society, 15  
 7010 Beyond Celiac, 23  
 3342 Beyond Pesticides, 19  
 3562 Bible Believers Fellowship, Inc., 23  
 1404 Big Brothers Big Sisters Independence Region, 34  
 7170 Big Brothers Big Sisters of America, 23  
 0101 Big Brothers Big Sisters of Mercer County, 35  
 7106 Big Cat Rescue Corp, 23  
 7171 Bladder Cancer Advocacy Network, 24  
 7011 Bob Woodruff Family Foundation, 24  
 7172 Boone and Crockett Club, 24  
 3924 Born Free USA, 19  
 7173 Born This Way Foundation, 24  
 3431 Boulder Crest Foundation, 24  
 2010 Boy Scouts of America Jersey Shore Council, 9  
 1441 Boy Scouts of America, Garden State Council, 34  
 3700 Boys & Girls Club of Mercer County, 32  
 1719 Boys & Girls Club of Monmouth County , 9  
 3414 Brain Injury Association of America, 24  
 3407 Brain Tumor Association, American (ABTA), 24  
 7057 Bread and Water for Africa, Inc., 24

7012 Breast Cancer African American, Sisters Network Inc., 24  
 4235 Breast Cancer Research Foundation, Inc., 11  
 3475 Brother's Brother Foundation, 24  
 7001 Buddhist Tzu Chi Foundation, 24

### C

---

0102 CAIR-NJ, INC, 35  
 1125 Camden County College Foundation, 35  
 6501 Camden County Hero Scholarship Fund, 35  
 7129 Can Do Multiple Sclerosis, 24  
 3528 Cancer Care, Inc., 24  
 4279 Cancer Hope Network, 11  
 3596 Cancer Research America - NFCR, 24  
 3458 Cancer Research Fund of the Damon Runyon - Walter Winchell Foundation, 24  
 0549 Cancer Research Institute, 11  
 3602 CancerCare, Inc., 32  
 3412 Canine Companions for Independence, 24  
 4429 Canines for Disabled Kids, 24  
 0404 CARE, 16  
 4044 Care Net, 11  
 2037 Caregiver Volunteers of Central Jersey, 9  
 7174 Carry The Load, 24  
 4430 Carter Center, 24  
 8202 Cathedral Soup Kitchen, Inc, 36  
 8169 Catholic Charities, Diocese of Trenton, 36  
 8228 Catholic Family and Community Services, 36  
 7176 Catholic Legal Immigration Network, Inc., 25  
 4483 Catholic Relief Services - USCCB, 25  
 3612 Catholic Youth Organization of Mercer County - CYO, 32  
 0103 Cathy Miller Cancer Fund, 36  
 0300 Center for Aquatic Sciences, 19  
 1410 Center for Family Services, Inc., 34  
 4484 Center for Reproductive Rights, 25  
 0504 Cerebral Palsy Foundation, 11  
 7035 Certified Humane, 25

## NEW JERSEY EMPLOYEES CHARITABLE CAMPAIGN

4485 CHADD (Children & Adults with Attention-Deficit/Hyperactivity Disorder), 25

0500 CHC: Creating Healthier Communities, 10

7016 Chesapeake Bay Foundation, Inc., 25

3613 Child Care Connection, 32

3521 Child Find of America, 25

4486 Child Foundation, 25

3472 Child Rescue International, 25

7060 Child Slavery, Trafficking and Forced Labor Rescue, 25

0483 ChildFund International , 16

3478 Childhood Brain Tumor Foundation, 25

3466 Childhood Cancer Research for a Cure, 25

0444 Children International , 17

7178 Children of Fallen Patriots Foundation, 25

3421 Children of the Night, 25

3447 Children's Defense Fund, 25

3547 Children's Hospital & Research Center Foundation , 25

0618 Children's Hospital Foundation, 11

6719 Children's Hospital of Philadelphia, 36

7179 Children's House at Johns Hopkins Hospital Inc, 25

7019 Children's Hunger Fund, 25

7180 Children's Hunger Relief Fund, 25

4410 Children's Organ Transplant Association, 25

0579 Children's Tumor Foundation, 11

8102 ChoiceOne Pregnancy & Sexual Health Resource Center, 36

4454 Christian Freedom International, Inc., 26

4271 Christian Military Fellowship, 12

4413 Christian Relief Services, 26

0406 Church World Service, 17

3905 Clean Water Fund, 19

0461 Clinton Foundation, 17

0474 CMMB (Catholic Medical Mission Board), 17

1701 Collier Youth Services, 9

0605 Colorectal Cancer Alliance, 12

3324 Comite De Apoyo A Los Trabajadores Agrícolas (Cata), 19

6549 Community Action Service Center dba Rise, 36

3474 Concerns of Police Survivors, Inc. (COPS), 26

3916 Conservation International Foundation, 19

3340 Conserve Wildlife Foundation of NJ, 20

1014 Contact of Burlington County, 36

6621 CONTACT of Mercer County New Jersey, Inc., 36

4281 Convoy of Hope, 12

7153 Coral Reef Alliance, 26

0411 Core Community Organized Relief Effort, 12

7154 Cornelia de Lange Syndrome Foundation, 26

4457 Correctional Peace Officers Foundation, 26

3566 Covenant House, 26

6526 Crisis Pregnancy Center of South Jersey Inc. DBA: Cornerstone Women's Resource Centers, 36

4260 Crohn's & Colitis Foundation, 12

7062 Cure Alzheimer's Fund, 26

3226 CureSearch for Children's Cancer, 15

0516 Cystic Fibrosis Foundation, 12

## D

---

3429 Days End Farm Horse Rescue, 26

3476 Deaf Children's Literacy Project, 26

0515 Deborah Heart & Lung Center, 12

3331 Defenders of Wildlife, 20

3922 Delaware Riverkeeper Network , 20

8171 Delaware Valley Golden Retriever Rescue Inc, 36

5017 Delta Research and Educational Foundation, 26

3584 Diabetes Action Research and Education Foundation, 26

3260 Diabetes Research & Wellness Foundation, 15

7155 Dian Fossey Gorilla Fund International, 26

0201 Direct Relief, 17

3471 Disabled American Veterans (DAV) Charitable Service Trust, 26

7181 Disabled Children's Fund, 26

0442 Doctors Without Borders USA, 12

7115 Dogs for Better Lives, 26

4501 Dogs Last Chance, 26

7063 Dogs On Death Row, 26

## NEW JERSEY EMPLOYEES CHARITABLE CAMPAIGN

### E

---

3300 EarthShare New Jersey, Inc., 19  
 6551 EASEL Animal Rescue League, 36  
 0454 ECHO, 17  
 7182 Educated Choices Program, Inc. , 26  
 7003 Elephant and Whale Protectors, 26  
 4434 Elephant Sanctuary, 27  
 3432 Elephants, Saving Elephants and Habitat Worldwide, 27  
 1239 Elijah's Promise, 36  
 8173 Embrace Kids Foundation, 36  
 8033 embrella (Foster and Adoptive Family Services, Inc.), 36  
 8174 Emmanuel Cancer Foundation, 36  
 7145 EOD Warrior Foundation, 27  
 0464 Episcopal Relief & Development, 17  
 8177 EZER MIZION, 36

### F

---

4452 Fabretto Children's Foundation, 27  
 1439 FamCare, Inc., 34  
 2070 Family Promise of Southern Ocean County , 9  
 0412 FAN 4 Kids, 12  
 5013 Farm Animal Rescue, Adoption, and Sanctuary, 27  
 7024 Farm Sanctuary Inc., 27  
 0401 Feed My Starving Children , 17  
 3266 Feed the Children, 15  
 0455 FINCA International, Inc., 17  
 3467 Fisher House Foundation, 27  
 4272 Fisher House Foundation, 12  
 3330 Flat Rock Brook Nature Association, 20  
 1703 Food Bank of Monmouth and Ocean Counties, Inc., 9  
 1436 Food Bank of South Jersey, Inc., 34  
 0482 Food For The Poor, 17  
 3287 Fòs Feminista, 15  
 0599 Foundation for AIDS Research, 12  
 7183 Fred Hutchinson Cancer Center, 27

0484 Free the Slaves, 17  
 4494 Freedom Alliance, 27  
 8230 Freehold Area Open Door, 36  
 0301 Friends for the Abbott Marshlands, 20  
 3576 Friends of Animals, 27  
 3397 Friends Of Liberty State Park, 20  
 3925 Friends of NJ School of Conservation, 20  
 8143 Friends of the Burlington County Animal Shelter, 37  
 6651 Friends of the Monmouth County Park System, Inc., 37  
 6504 Funny Farm Rescue, 37

### G

---

0104 Garden State Animal Rescue Center, 37  
 1709 Garden State Consumer Credit Counseling, Inc. Navicore Solutions , 9  
 3486 Gary Sinise Foundation, 27  
 7031 Gettysburg Foundation, 27  
 1409 Girl Scouts of Central & Southern New Jersey, 34  
 2011 Girl Scouts of the Jersey Shore, 9  
 1408 Glassboro Child Development Centers, 34  
 4212 Glaucoma Research Foundation, 12  
 0400 Global Impact, 16  
 0452 Global Partners in Care, 17  
 1426 Gloucester County YMCA (YMCA Camp Ockanickon), 34  
 7156 Gluten Intolerance Group of North America, 27  
 3511 GO2 Foundation for Lung Cancer, 27  
 6623 Good Grief, Inc., 37  
 0105 Grace Giving and Receiving Assistance for our Community's Essentials, Inc., 37  
 3310 Greater Newark Conservancy, 20  
 4415 Greenpeace Fund, 27  
 4108 Guide Dog Foundation for the Blind, Inc., 27  
 4459 Guide Dogs for the Blind, Inc., 27  
 4460 Guide Dogs of America, 27

## NEW JERSEY EMPLOYEES CHARITABLE CAMPAIGN

### H

---

7184 Habitat for Humanity International, 28

3908 Hackensack Riverkeeper, 20

4284 Headstrong Project Inc., 12

4490 Hearing Health Foundation, 28

7065 Heart Disease Aid and Research Fund, 28

7032 Hearts United for Animals, 28

0431 Heifer International, 17

0408 Helen Keller International, 17

0106 Helping Other People Evolve, Inc, 37

0418 HIAS, 17

3707 HISPA, 33

3490 Hispanic Scholarship Fund, 28

8105 Histiocytosis Association, Inc., 37

1405 HollyDELL, Inc., 34

3427 Holt International Children's Services, 28

6545 HomeFront, Inc., 37

3503 Homes for Our Troops, 28

3708 HomeWorks Trenton, 33

0478 Hope for Haiti, 17

7033 Hope For The Warriors®, 28

3526 HOPE worldwide, 28

3457 Hospice Foundation of America, 28

6510 House of Charity/South Jersey Catholic Ministry Appeal (SJCMA), 37

2065 House of Hope of Ocean County, Inc., 9

3709 Housing Initiatives of Princeton, 33

0437 Human Rights Watch, 17

5020 Humane Society of Atlantic County, 28

3214 Humane World for Animals (was Humane Society of the United States), 15

3208 Humane World for Animals International (was Humane Society International), 15

0405 Humanity & Inclusion, 17

1615 Hunterdon Land Trust, 37

0518 Huntington's Disease Society of America, 12

### I

---

7209 In Defense of Animals, 28

0107 Inspiring Life Together, 37

8122 Institute of Music for Children, 37

0108 Interfaith Caregivers of Greater Mercer County, 37

4262 International Justice Mission, 12

0465 International Medical Corps, 17

4498 International Myeloma Foundation, 28

0407 International Orthodox Christian Charities, 17

0429 International Relief Teams, 18

0447 International Rescue Committee, Inc. , 18

7070 Iraq and Afghanistan Veterans of America, Inc., 28

0479 Islamic Relief USA, 18

3902 Isles, Inc., 20

3449 Israel Guide Dog Center for the Blind, 28

3306 Izaak Walton League of America, 20

### J

---

4252 JDRF International, 12

1401 Jersey Care / Volunteer Center of South Jersey, 34

3627 Jewish Family & Children's Service of Greater Mercer County (JFCS), 33

0721 Jewish Family Service of Atlantic County, 37

1603 Jewish Family Service of Somerset, Hunterdon and Warren Counties, 37

3000 Jewish Federation of Middlesex and Monmouth Counties, 10

3660 John O. Wilson Hamilton Neighborhood Service Center, Inc., 33

### K

---

3477 K9s For Warriors, 28

6619 Karen Ann Quinlan Memorial Foundation, DBA Karen Ann Quinlan Hospice, 37

0109 Keys 2 Success, Inc., 38

3508 Kidney Cancer Association, 28

8221 Kingsway Education Foundation, 38

8220 K's Kitten Rescue, 38



## NEW JERSEY EMPLOYEES CHARITABLE CAMPAIGN

### L

---

3424 La Jolla Institute for Immunology, 28  
 3926 Lake Hopatcong Foundation, 20  
 3696 LALDEF -Latin American Legal Defense and Education Fund, 33  
 3923 Land Trust Alliance, 20  
 1131 Larc School, 38  
 8010 Lawrence Township Education Foundation , 38  
 6564 Legal Services of New Jersey, 38  
 0523 Leukemia & Lymphoma Society, 12  
 0609 Leukemia Research Foundation, 12  
 1429 Literacy New Jersey, 34  
 2015 Long Beach Island Community Center, 9  
 8123 Lunch Break, Inc., 38  
 0415 Lung Cancer Research Foundation, 12  
 0520 Lupus Foundation of America, 13  
 3516 Lutheran World Relief, 28  
 4416 Lymphoma Research Foundation, 28

### M

---

3590 MADRE, Inc., 29  
 6546 Mainstage Center for the Arts, 38  
 3222 Make-A-Wish Foundation of America, 15  
 0422 MAP International, 18  
 0525 March of Dimes, 13  
 7125 Marine Corps -- Law Enforcement Foundation, 29  
 3553 Marine Mammal Center, 29  
 4523 Marine Mammal Stranding Center, 29  
 6553 Martin Luther King Youth Center, Inc., 38  
 6565 Marty's Place Senior Dog Sanctuary, 38  
 1412 Maryville, Inc., 34  
 8108 Masonic Charity Foundation of New Jersey DBA Masonic Village at Burlington, 38  
 7072 Matthew 25: Ministries, 29  
 4274 MAZON: A Jewish Response to Hunger, 13  
 6555 Meals on Wheels in Greater New Brunswick, 38  
 1631 Meals on Wheels in Hunterdon, Inc., 38

6626 Meals on Wheels of Mercer County, Inc., 38  
 2004 Meals on Wheels of Ocean County - Community Service, 9  
 0424 Medical Teams International, 18  
 0538 Mental Health America, 13  
 3632 Mercer Street Friends, 33  
 0428 Mercy Corps, 18  
 4017 Mercy Ships, 13  
 7004 Mercy-USA for Aid and Development, Inc., 29  
 4504 Mexican American Legal Defense and Educational Fund, 29  
 4285 Michael J Fox Foundation for Parkinsons Research, 13  
 8109 Middle Earth, 38  
 4243 Military Community Youth Ministries, 13  
 3593 Military Officers Association of America Scholarship Fund, 29  
 3302 Monmouth Conservation Foundation, 20  
 7037 Monmouth County SPCA, 29  
 1708 Monmouth Day Care Center, 9  
 3255 Mothers Against Drunk Driving, 15  
 8222 Move For Hunger, Inc., 38  
 3233 Multiple Sclerosis Association of America, 15  
 7038 Multiple Sclerosis Foundation, 29  
 3931 Musconetcong Watershed Association, 20  
 0527 Muscular Dystrophy Association, 13

### N

---

33396 NAACP Empowerment Programs Inc., 15  
 3209 NAACP Legal Defense and Educational Fund, Inc., 15  
 0541 NAMI, 13  
 3932 National Audubon Society, 20  
 3212 National Black Child Development Institute, 15  
 4258 National Black Women's Health Project, 13  
 4275 National Breast Cancer Foundation, Inc., 13  
 3482 National CASA/GAL Association for Children, 29  
 3530 National Center for Missing & Exploited Children, 29  
 4270 National Childrens Cancer Society, 13  
 3242 National Down Syndrome Society, 15  
 3224 National Fallen Firefighters Foundation, 15

## NEW JERSEY EMPLOYEES CHARITABLE CAMPAIGN

0604 National Foundation for Cancer Research, 13

0590 National Kidney Foundation, 13

4268 National Minority AIDS Council, Inc., 13

0591 National Multiple Sclerosis Society, 13

3501 National Park Trust, 29

3532 National Veterans Legal Services Program, Inc., 29

3901 National Wildlife Federation, 20

7186 Native Forward Scholars Fund, 29

3329 Natural Resources Defense Council, 20

3303 Nature Conservancy, The, 20

7187 Navy SEAL Foundation, Inc. , 29

4019 Nazarene Compassionate Ministries, Inc., 13

4432 NEADS INC, 29

3907 New Jersey Audubon Society, 21

8235 New Jersey Blind Citizens Association, Inc., 38

8112 New Jersey Center for Tourette Syndrome and Associated Disorders, Inc., 39

3341 New Jersey Conservation Foundation, 21

2005 New Jersey Institute for Disabilities, 9

0526 New Jersey Mental Health Association Inc., 13

6579 New Jersey State Museum Foundation, 39

8130 New Jersey Tree Foundation, 39

0110 New Jersey Voluntary Organizations Active in Disaster Relief, Inc (NJVOAD), 39

### O

---

2073 O.C.E.A.N. Inc., 9

3399 Ocean Conservancy, 21

2069 Ocean County YMCA, Inc., 10

6633 Ocean of Love, Inc, 39

0111 One Accord Inc, d/b/a Kids Alley, 39

0112 One Step Closer Animal Rescue, Inc., 39

5025 Operation First Response, Inc., 29

4529 Operation Homefront, 29

0414 Operation Smile, 18

3201 Ovarian Cancer Research Alliance, 15

0413 Oxfam America, 18

### P

---

8172 PAL of Egg Harbor Township, 39

0593 Pancreatic Cancer Action Network, 13

0553 Parkinson's Foundation, 13

0471 Partners In Health, 18

8236 Partners in Learning, Inc., 39

8014 Partnership for the Delaware Estuary Inc., 39

3544 Paws for Purple Hearts, 29

3507 Paws With A Cause, 30

7189 paws4vets, 30

0113 Pedals for Progress, 39

7159 Pediatric Brain Tumor Foundation of the United States, Inc., 30

7190 Pediatric Cancer Research Foundation, 30

3698 PEI Kids [Prevention Education Inc.], 33

7191 Pennsylvania Society For The Prevention Of Cruelty To Animals, 30

3347 Peregrine Fund, The, 21

7005 Pet Partners, 30

3436 PETA: People for the Ethical Treatment of Animals, 30

0114 Peter's Place, 39

3502 Pets for Patriots, Inc., 30

7192 Pets of the Homeless, 30

3228 PetSmart Charities, Inc., 15

7193 Philippine Children's Shelter, 30

3904 Pinelands Preservation Alliance, 21

4442 PKD Foundation, 30

0410 Plan International USA, 18

7076 Planned Parenthood Federation of America, 30

0539 Prevent Child Abuse New Jersey Chapter, 14

8237 Princeton Child Development Institute, 39

3703 Princeton Mobile Food Pantry, 33

3710 Princeton Nursery School, 33

8153 Princeton-Blairstown Center, 39

0427 Prison Fellowship International, 18

4022 Prison Fellowship Ministries, 14

8238 Probation Association of New Jersey Education Fund, 39

0416 Project HOPE, 18

## NEW JERSEY EMPLOYEES CHARITABLE CAMPAIGN

7194 **Public Employees for Environmental Responsibility**, 30  
 7077 **Puppies Behind Bars**, 30  
 7195 **Purple Heart Foundation**, 30

### R

---

0115 **Rahway Community Action Organization** , 39  
 3211 **Rails to Trails Conservancy**, 16  
 7161 **Rainforest Trust** , 30  
 6508 **Ramapo College Foundation**, 39  
 7041 **Ramapo-Bergen Animal Refuge**, 30  
 3551 **Rape, Abuse, & Incest National Network (RAINN)**, 30  
 3229 **Reading Is Fundamental, Inc. (RIF)**, 16  
 0451 **Refugees International**, 18  
 1415 **Repauno Pre-School Day Care, Inc.**, 34  
 3246 **Reproductive Freedom For All Foundation (NARAL)**, 16  
 7196 **RESOLVE: The National Infertility Association**, 30  
 3505 **Restless Legs Syndrome Foundation**, 31  
 0432 **Rise Against Hunger**, 18  
 7006 **Robert Irvine Foundation, Inc.**, 31  
 3572 **Rocky Mountain Elk Foundation**, 31  
 3934 **Rodale Institute**, 21  
 3711 **Rolling Harvest Food Rescue**, 33  
 3241 **Ronald McDonald House Charities**, 16  
 6518 **Rowan University**, 39  
 0116 **Runaway Farm**, 40  
 0117 **Rutgers Hillel Corporation**, 40

### S

---

1411 **Samaritan Healthcare & Hospice**, 34  
 4232 **Samaritan's Purse**, 14  
 3484 **Sarcoma Foundation of America, Inc.**, 31  
 3344 **Save Barnegat Bay**, 21  
 0417 **Save the Children**, 18  
 7137 **Save the Chimps**, 31  
 3487 **Save the Manatee Club, Inc.**, 31

7197 **SAVE, A Friend to Homeless Animals**, 31  
 3587 **Scholarship America**, 31  
 0420 **Scleroderma Foundation**, 14  
 8192 **Sea Turtle Recovery**, 40  
 3559 **Search Dog Foundation**, 31  
 2523 **Second Street Youth Center Inc**, 40  
 0430 **SEE International**, 18  
 4510 **Seeing Eye, Inc.**, 31  
 4497 **Semper Fi & America's Fund**, 31  
 6519 **Senior Citizens United Community Services, Inc.**, 40  
 7044 **SEVA Foundation**, 31  
 3701 **Share My Meals**, 33  
 8225 **Shore Clubhouse, Inc.**, 40  
 4419 **Shriners Hospitals for Children**, 31  
 3349 **Sierra Club Foundation**, 21  
 8240 **Sister2Sister**, 40  
 4511 **Skin Cancer Foundation**, 31  
 4263 **Smile Train**, 14  
 7198 **Society for Science**, 31  
 4245 **Society of Saint Andrew, Inc.**, 14  
 4512 **Soldiers' Angels**, 31  
 0202 **SOS Children's Villages USA**, 18  
 0302 **Sourland Conservancy**, 21  
 8211 **South Jersey Regional Animal Shelter, Inc.**, 40  
 3225 **Southern Poverty Law Center**, 16  
 8241 **Special Olympics New Jersey**, 40  
 7138 **Special Operations Warrior Foundation**, 31  
 6587 **Special People United to Ride, Inc.**, 40  
 3928 **SPLASH: Delaware River Floating Classroom**, 21  
 0597 **St. Jude Children's Research Hospital**, 14  
 8212 **Stephen Siller Tunnel to Towers Foundation**, 40  
 6733 **Stockton University Foundation**, 40  
 7199 **Student Conservation Association, The**, 31  
 7200 **Suicide Awareness Voices of Education**, 31  
 6590 **Sunshine Foundation**, 40  
 3910 **Surfrider Foundation**, 21

## NEW JERSEY EMPLOYEES CHARITABLE CAMPAIGN

4264 Susan G. Komen Breast Cancer Foundation, 14

3935 Sustainable Jersey, 21

### T

---

6557 TASK (Trenton Area Soup Kitchen), 40

2031 Team Randy, Inc., 10

3919 Teaneck Creek Conservancy, 21

0303 Tenaflly Nature Center, 21

8242 The Arc Mercer, 40

0701 The Arc of Atlantic County, 40

6591 The Bridge Academy, 40

0203 The Center for Victims of Torture, 18

0435 The Children's Cancer Cause Inc., 14

2003 The Children's Home Society of New Jersey, 10

3704 The Children's Home Society of New Jersey , 33

3205 The Conservation Fund, 16

3705 The Father Center of New Jersey, 33

3702 The Makers Place, 33

3394 The Obama Foundation, 16

8190 The Rescue Mission of Trenton, 40

8136 The Saints Prison Ministry, Inc., 40

0726 The Salvation Army New Jersey Divison, 40

0426 The Salvation Army World Service Office (SAWSO), 18

6685 The Sierra House, 40

4286 The Stephen C. Rose Legacy Foundation, 14

0118 The Watershed Institute, 40

6520 The William Paterson University of NJ Foundation, Inc., 40

6598 Thomas Edison State University Foundation, Inc., 40

3398 Thurgood Marshall College Fund, 16

3565 Thyroid Association, American, 31

4444 TMJ Association, Ltd., 31

3535 Toys For Tots Foundation, 32

7140 Travis Manion Foundation, 32

7201 Trevor Project, 32

8159 Turner Syndrome Foundation, Inc., 40

### U

---

4009 Unbound, 14

0600 UNCF-United Negro College Fund, 40

0419 UNICEF USA, 18

3301 Union of Concerned Scientists, 21

0450 Unitarian Universalist Service Committee , 18

4054 United Breast Cancer Foundation, 14

0475 United Methodist Committee on Relief (UMCOR), 18

4471 United States Association for UNHCR, 32

3800 United Way of Bucks County, 40

1200 United Way of Central Jersey, 40

1400 United Way of Gloucester County, 33

3600 United Way of Greater Mercer County, 32

0119 United Way of Hunterdon County, 40

2000 United Way of Monmouth and Ocean Counties, 9

8137 United Way of Passaic County, 40

0120 Urban League of Union County, 40

1147 UrbanPromise Ministries, Inc. (Camden), 40

3712 UrbanPromise Trenton, Inc., 33

7046 USA Cares Inc., 32

7015 USA for UNFPA, 16

### V

---

4265 V Foundation, 14

3513 Vegan Outreach, 32

5034 Veteran Tickets Foundation, 32

4405 Veterans of Foreign Wars Foundation, 32

2051 Vetgroup, Inc., 10

0121 Villages in Partnership, 40

2074 Visiting Nurse Association of Central Jersey, 10

4031 Voice of the Martyrs, Inc., 14

1433 Volunteers of America Delaware Valley, Inc., 34

3713 Volunteers of America Delaware Valley , 33

## NEW JERSEY EMPLOYEES CHARITABLE CAMPAIGN

### W

---

0460 **Water For People** , 19  
4248 **Water Missions International**, 14  
4472 **Water.org**, 32  
8243 **Waterspirit**, 40  
3351 **Wetlands Institute, The**, 21  
6620 **Womanspace Inc., DBA Younity**, 40  
6671 **Women Aware, Inc.**, 41  
0462 **Women for Women International**, 19  
1425 **Woodbury Child Development Center**, 34  
3328 **Woodford Cedar Run Wildlife Refuge**, 21  
0433 **World Bicycle Relief**, 19  
4240 **World Emergency Relief**, 14  
0480 **World Food Program USA**, 19  
0439 **World Relief** , 19  
0425 **World Renew**, 19  
0421 **World Vision**, 19  
3322 **World Wildlife Fund**, 21

7162 **Wounded Warrior Emergency Support Fund**, 32  
3213 **Wounded Warrior Project, Inc.**, 16  
3495 **Wounded Warriors in Action Foundation**, 32  
7203 **Wreaths Across America**, 32  
6601 **Wynona House Inc**, 41

### X

---

3929 **Xerces Society**, 21

### Y

---

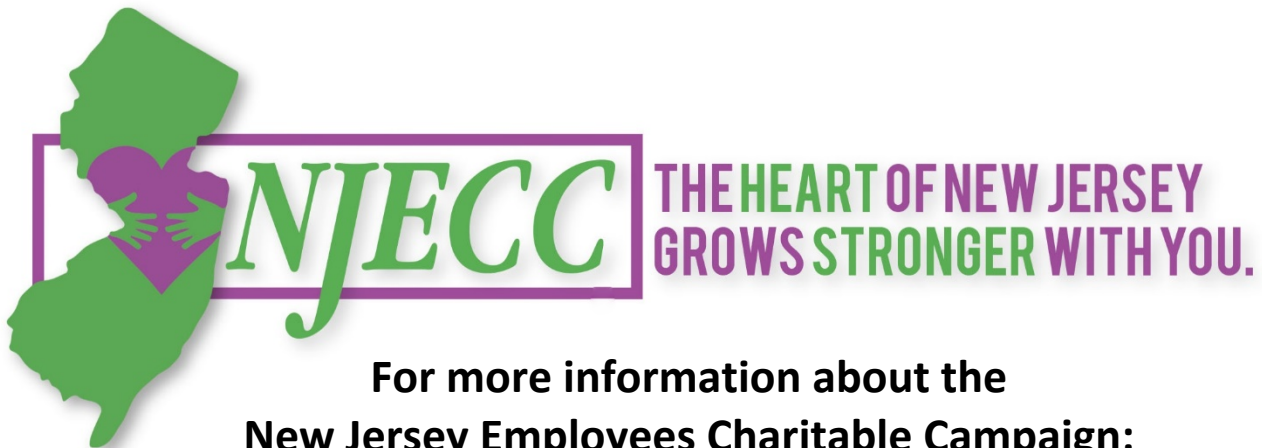
7204 **Yellowstone Forever**, 32  
0122 **YM YWHA of Union County**, 41  
2068 **Your Grandmother's Cupboard**, 10

### Z

---

0558 **ZERO Prostate Cancer**, 14





**For more information about the  
New Jersey Employees Charitable Campaign:**

Susan O'Brien  
Campaign Manager  
[sobrien@njecc.net](mailto:sobrien@njecc.net)

PO Box 183,  
Middletown, DE 19709  
609.477.8306  
[www.njecc.net](http://www.njecc.net)

The Credit Union of New Jersey

# FINANCIAL WELLBEING

GROW & BLOOM WITH PROSPERITY PERKS



**YOU DESERVE THE  
FREEDOM TO PROSPER**

## TAKE CHARGE OF YOUR FINANCES

From saving to debt management—and everything in between—we're here with trusted tools and guidance to help you build fortified financial confidence.



**Credit Union  
of New Jersey**

The freedom to prosper.

**CONTACT US:** [businessdevelopment@cunj.org](mailto:businessdevelopment@cunj.org)

**VISIT US:** [www.cunj.com/financial-wellbeing/](http://www.cunj.com/financial-wellbeing/)